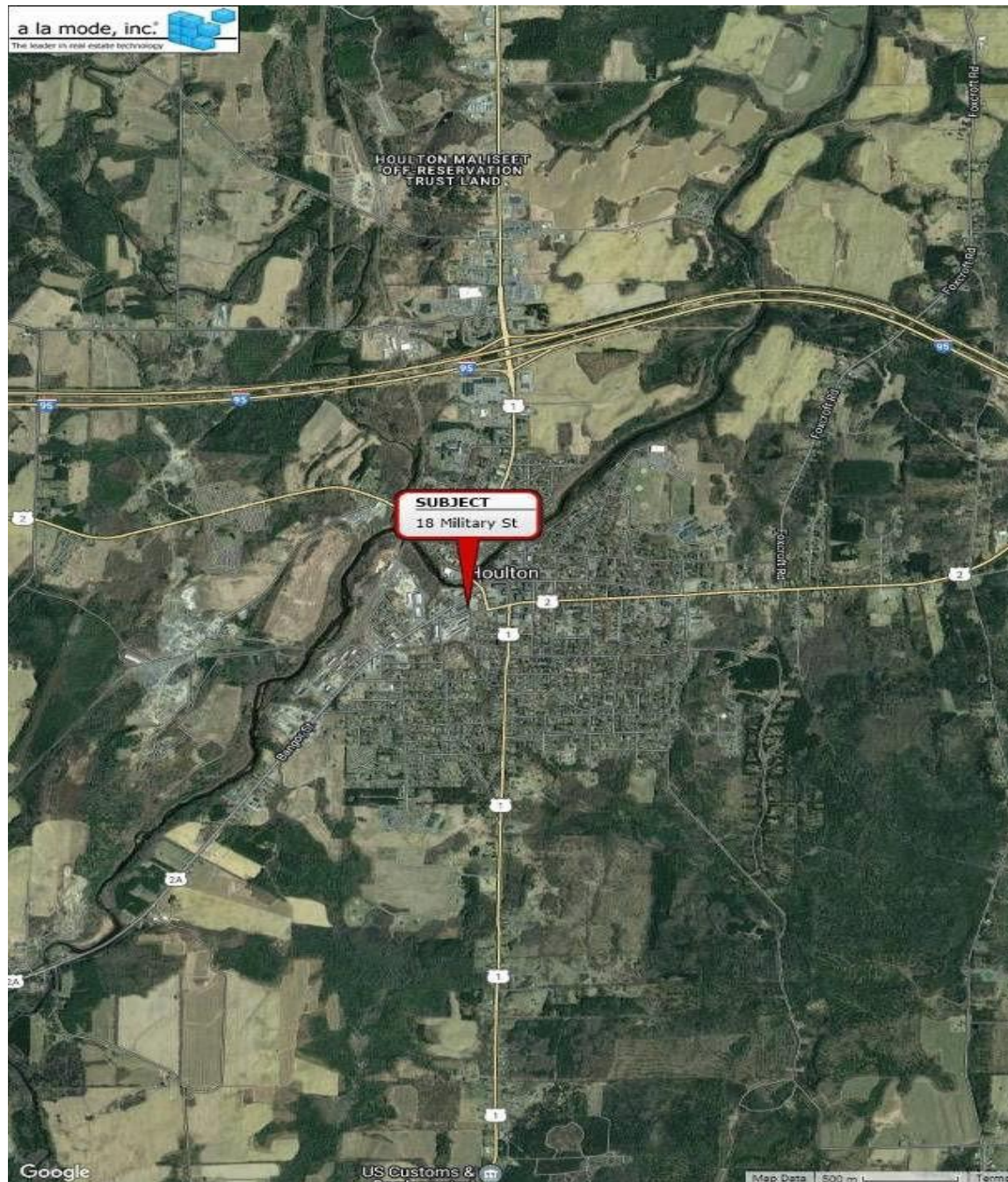


Appendix C – Seller's Property Disclosure

EXHIBIT A - Photos

LOCATION MAPS





PROPERTY TAX MAP



East Wall (façade), main entrance



East Wall, main entrance



Portions of South and West walls



South wall



Truck dock on the south wall



Drive up ramp and utility room



Start of the west wall, facing North



North wall



East wall, facing north to main entrance



Interior Photos

Entrance/Reception



Typical Hallway finishes



Room 117



Room 119



Room 124



Room 124 (opposite view)



Room 125



Room 125 – Opposite View



Break room



Typical bathroom finish (good quality)



Typical bathroom

Staff bathroom



Room 131



Room 131 – opposite view



Small storage shed on site



Shed on site

SITE IMPROVEMENTS

Signage on Military Street



Signage at Bangor Street entrance



Access to parking lot from Bangor Street, facing south to Military Street entrance



Another view of the parking lot, facing West



Parking lot, facing west



View of the parking lot entrance from Military Street, facing northwest



STREET SCENES

Facing east on Bangor Street to historic downtown



Facing west on Bangor Street



Facing west on Military Street

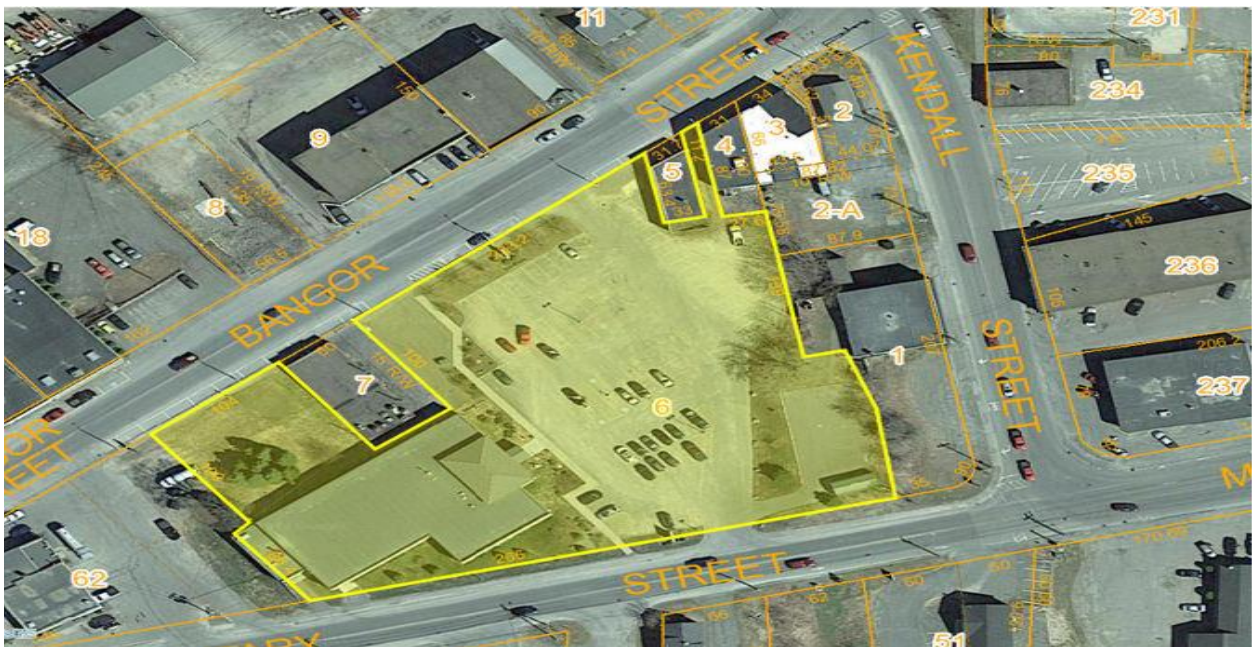


Facing east on Military Street



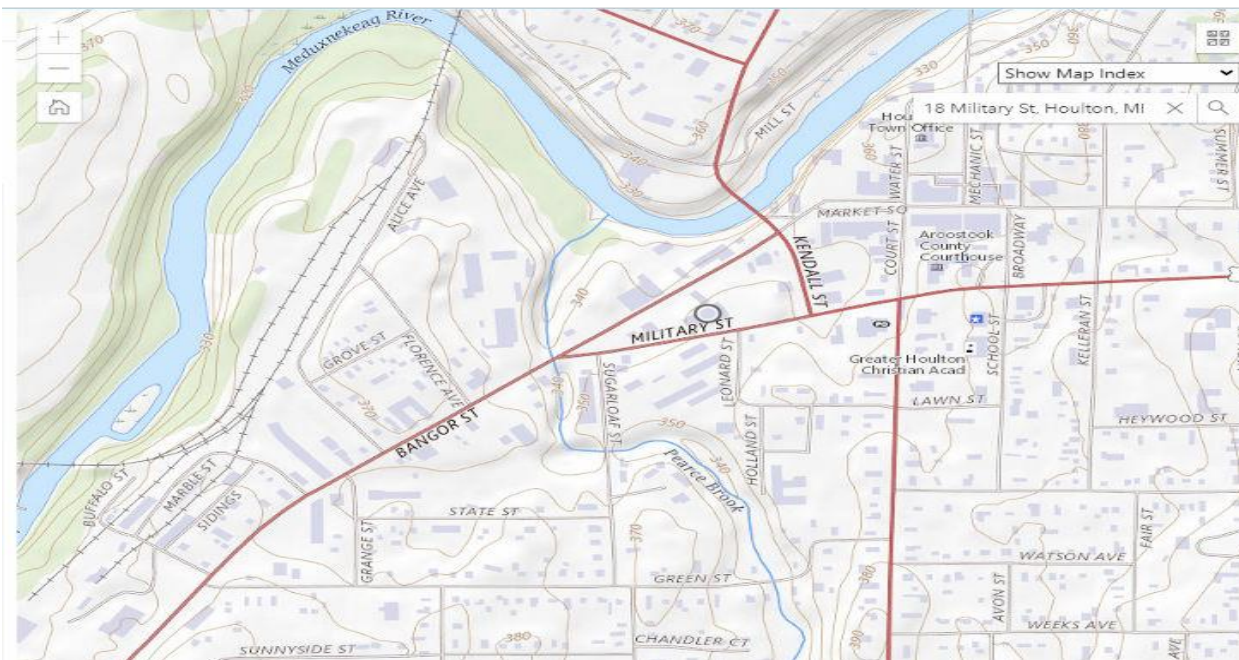
SITE DATA & ANALYSIS

Property Tax Map



Topographical Map

Gently Sloping Terrain



Wetlands Map

No mapped wetlands



Wetlands



Wetlands

- Estuarine and Marine Deepwater
- Estuarine and Marine Wetland

- Freshwater Emergent Wetland
- Freshwater Forested/Shrub Wetland
- Freshwater Pond
- Lake
- Other
- Riverine

This map is for general reference only. The US Fish and Wildlife Service is not responsible for the accuracy or currentness of the base data shown on this map. All wetlands-related data should be used in accordance with the layer metadata found on the Wetlands Mapper web site.

National Wetlands Inventory (NWI)
This page was produced by the NWI mapper

FLOOD MAP

No mapped flood zones or velocity hazard districts

