

## Bus Trade in Information

**ALL BUSES WILL BE THOROUGHLY CLEANED  
INSIDE AND OUT PRIOR TO SALE**

Bus 1

Vin: 1FDAF5GYKEF41880

Plate: 300-663

Year: 2019

Chasis MFG: Ford

Body MFG: Champion

GVWR: 19,500

Mileage: 64,462 (2/28/2023)

Engine Size: F550

Passenger Count: 29

Unit is drivable and in overall Very  
Good/Excellent condition

No broken glass

Functioning A/C

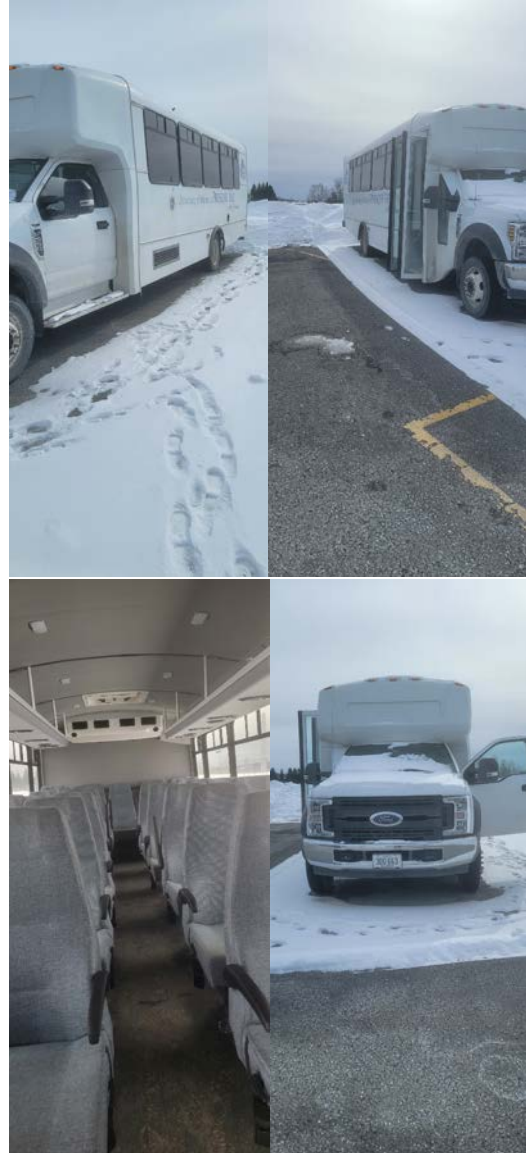
No Wheelchair lift

No Rust

No Check engine or other diagnostic lights on

Body, Engine, Transmission, Breaks all in good  
working order

All tires replaced 12/2022



Bus 2

Vin: 1FDAF5GY5KEF41879

Plate: 300-664

Year: 2019

Chasis MFG: Ford

Body MFG: Champion

GVWR: 19,500

Mileage: 45,415 (2/28/2023)

Engine Size: F550

Passenger Count: 29

Unit is drivable and in overall Very  
Good/Excellent condition

No broken glass

Functioning A/C

No Wheelchair lift

No Rust

No Check engine or other diagnostic lights on

Body, Engine, Transmission, Breaks, Battery all  
in good working order

All tires replaced 12/2022



### Bus 3

Vin: 1FDEE3F62KDC45734

Plate: 300-745

Year: 2019

Chassis MFG: Ford

Body MFG: Champion

GVWR: 10,360

Mileage: 23,615 (3/1/2023)

Engine Size: E350, gas

Passenger Count: 15

Unit is drivable and in overall Excellent condition

No broken glass

Functioning A/C

No Wheelchair lift

No Rust

No Check engine or other diagnostic lights on

Body, Engine, Transmission, Breaks, Battery all in good working order

All tires in good condition



Bus 4

Vin: 1FDEE3F64KDC45735

Plate: 300-675

Year: 2019

Chassis MFG: Ford

Body MFG: Champion

GVWR: 10,360

Mileage: 21,338 (3/1/2023)

Engine Size: E350, gas

Passenger Count: 15

Unit is drivable and in overall Excellent condition

No broken glass

Functioning A/C

No Wheelchair lift

No Rust

No Check engine or other diagnostic lights on

Body, Engine, Transmission, Breaks, Battery all in good working order

All tires in good condition





Bus 5

Vin: 1FDEE3F66KDC45736

Plate:

Year: 2019

Chassis MFG: Ford

Body MFG: Champion

GVWR: 10,360

Mileage: 9,203 (3/1/2023)

Engine Size: E350, gas

Passenger Count: 15

Unit is drivable and in overall Excellent condition

No broken glass

Functioning A/C

No Wheelchair lift

No Rust

No Check engine or other diagnostic lights on

Body, Engine, Transmission, Breaks, Battery all in good working order

All tires in good condition



Bus 6

Vin: 1FDEE3F68KDC45737

Plate: 300-675

Year: 2019

Chassis MFG: Ford

Body MFG: Champion

GVWR: 10,360

Mileage: 9,611 (3/1/2023)

Engine Size: E350, gas

Passenger Count: 15

Unit is drivable and in overall Excellent condition

No broken glass

Functioning A/C

No Wheelchair lift

No Rust

No Check engine or other diagnostic lights on

Body, Engine, Transmission, Breaks, Battery all in good working order

All tires in good condition



## Bus 7

Vin: 1FDAF5GY3KEF41881

Plate: 300-076

Year: 2019

Chasis MFG: Ford

Body MFG: Champion

GVWR: 19,500

Mileage: 42,310 (3/8/2023)

Engine Size: F550

Passenger Count: 29

Unit is drivable and in overall Good condition

No broken glass

Functioning A/C

No Wheelchair lift

No Rust

No Check engine or other diagnostic lights on

Engine, Transmission, Breaks all in good working order

Front right tire needs to be replaced; other tires are in good condition

Some Body work is needed at rear of vehicle (see pictures)





Bus 8

Vin: 1FDAF5GY7KEF41883

Plate: 300-180

Year: 2019

Chasis MFG: Ford

Body MFG: Champion

GVWR: 19,500

Mileage: 42,310 (3/8/2023)

Engine Size: F550

Passenger Count: 29

Unit is drivable and in overall Good condition

No broken glass

Functioning A/C

No Wheelchair lift

No Rust

No Check engine or other diagnostic lights on

Body, Engine, Transmission, Breaks all in good working order

All tires are in good condition





