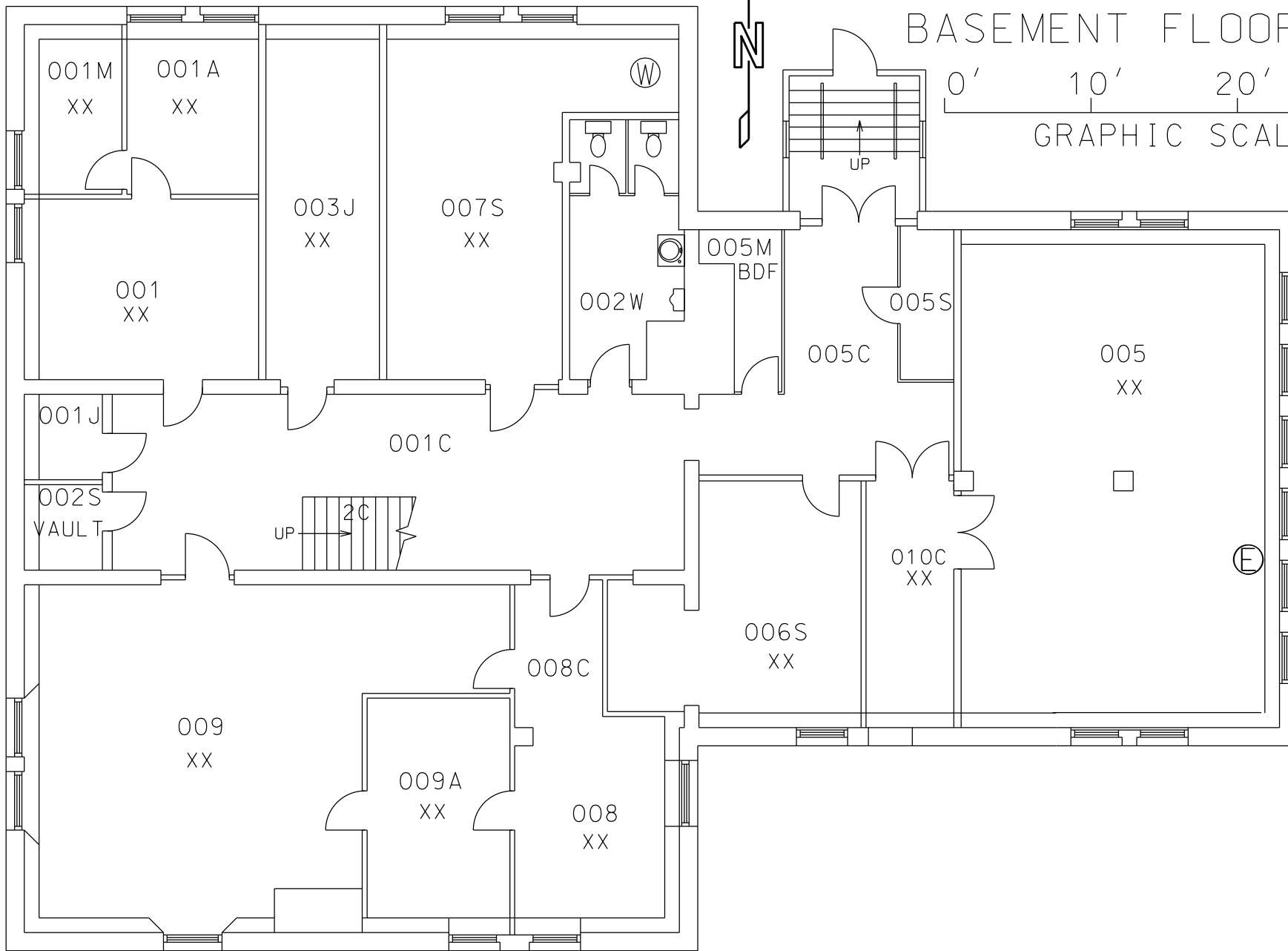


# COBURN HALL

5D003

## BASEMENT FLOOR PLAN



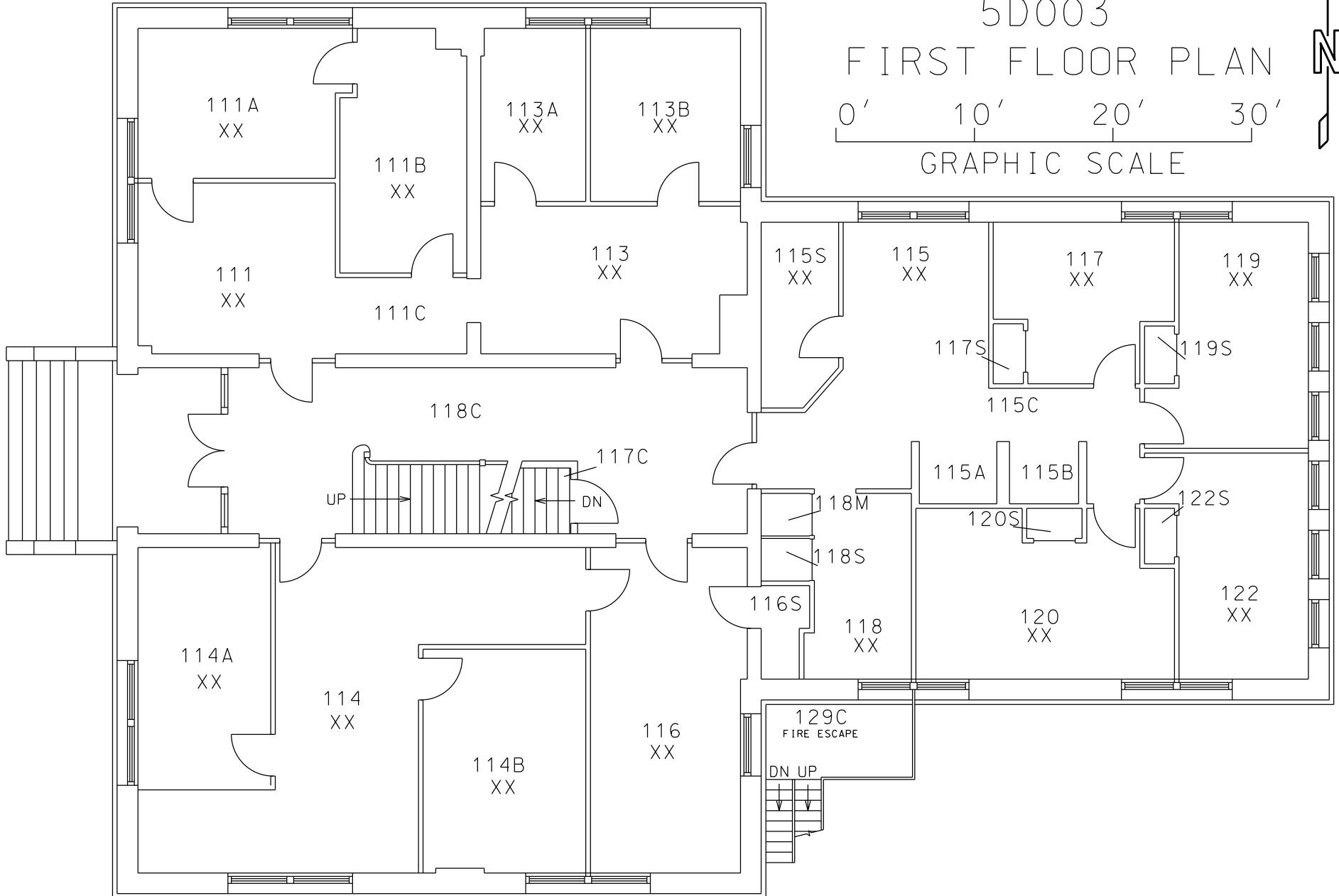
# COBURN HALL

5D003

## FIRST FLOOR PLAN



GRAPHIC SCALE



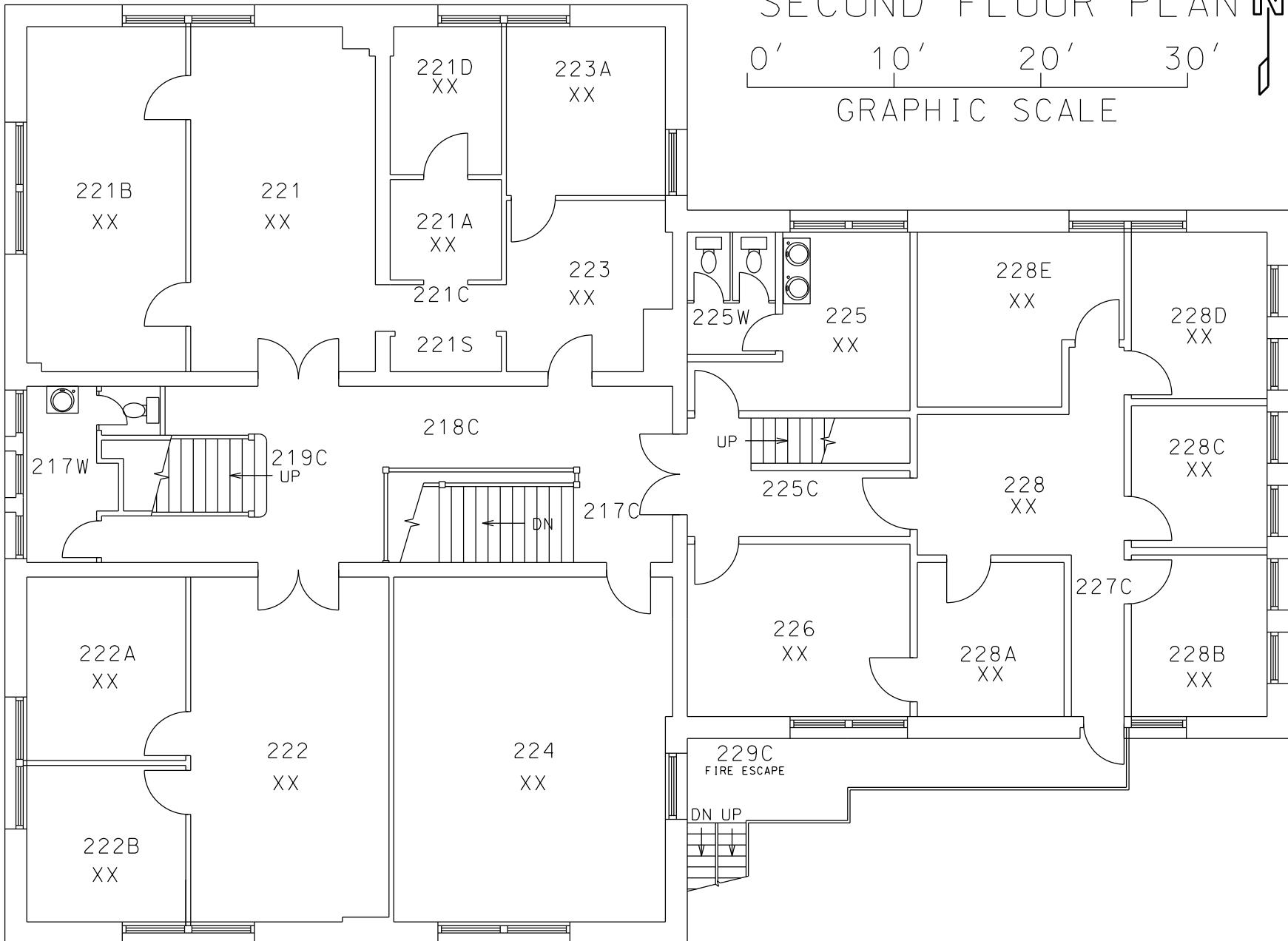
# COBURN HALL

5D003

## SECOND FLOOR PLAN



GRAPHIC SCALE



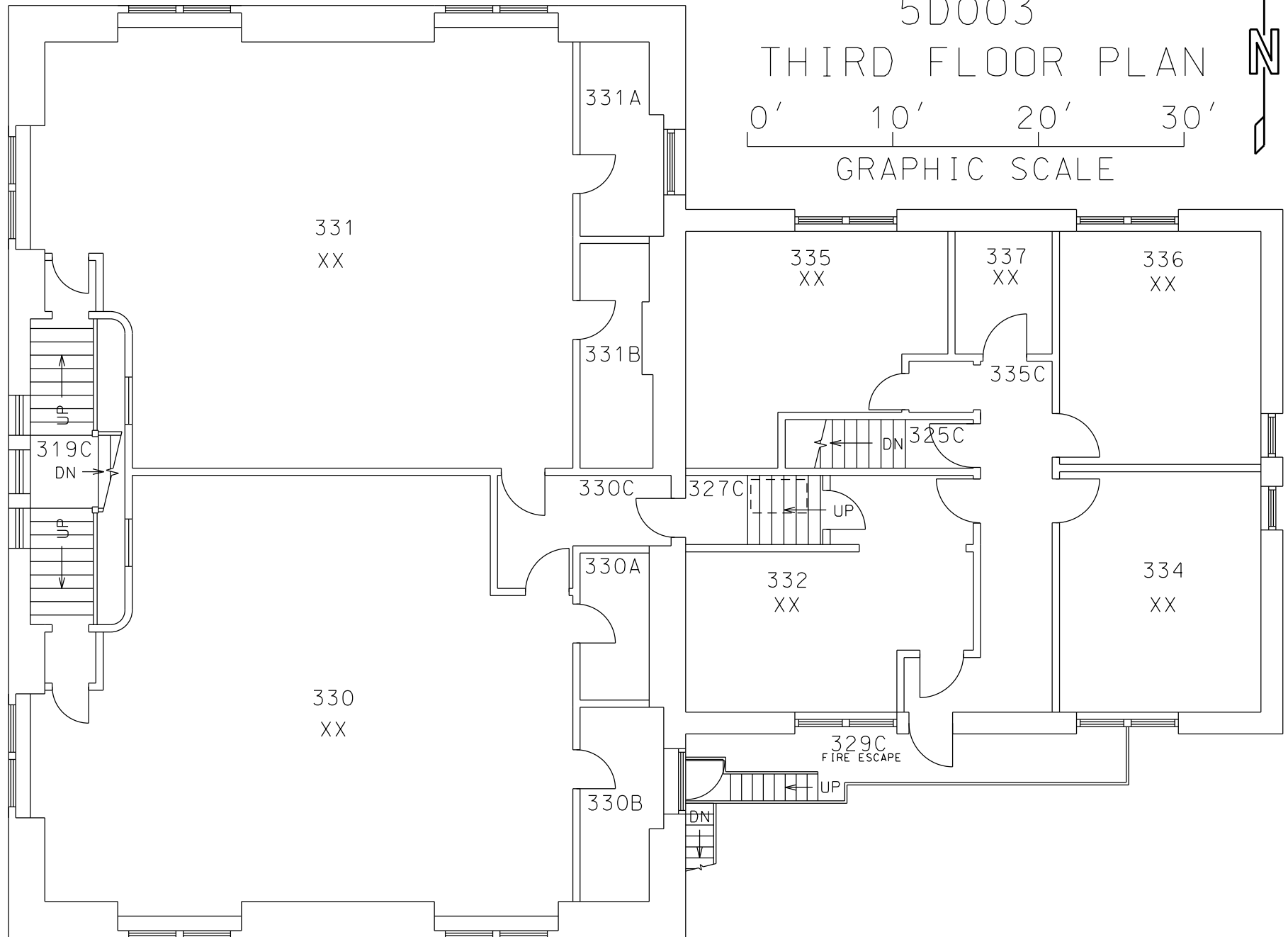
# COBURN HALL

5D003

## THIRD FLOOR PLAN



GRAPHIC SCALE



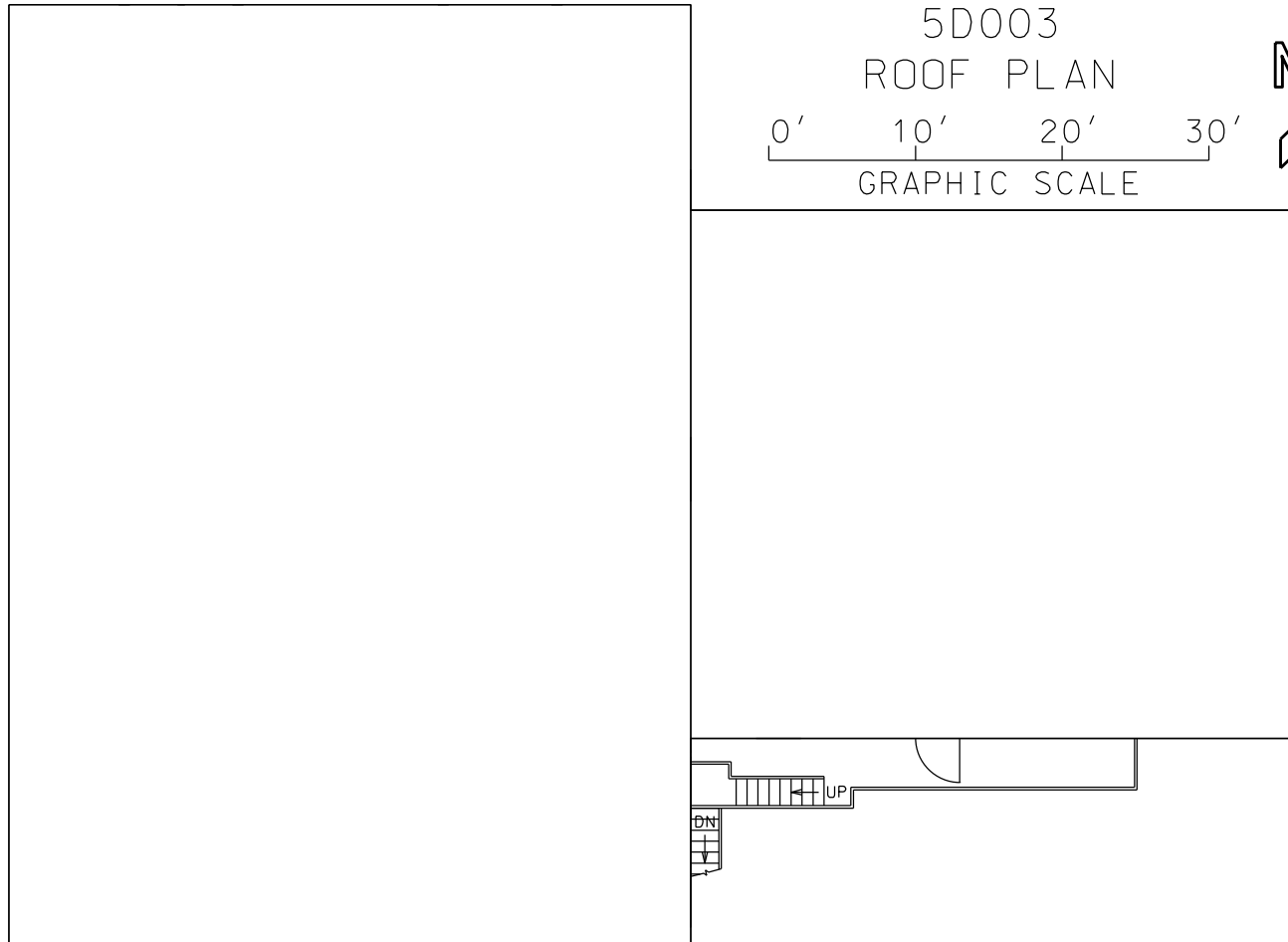
COBURN HALL

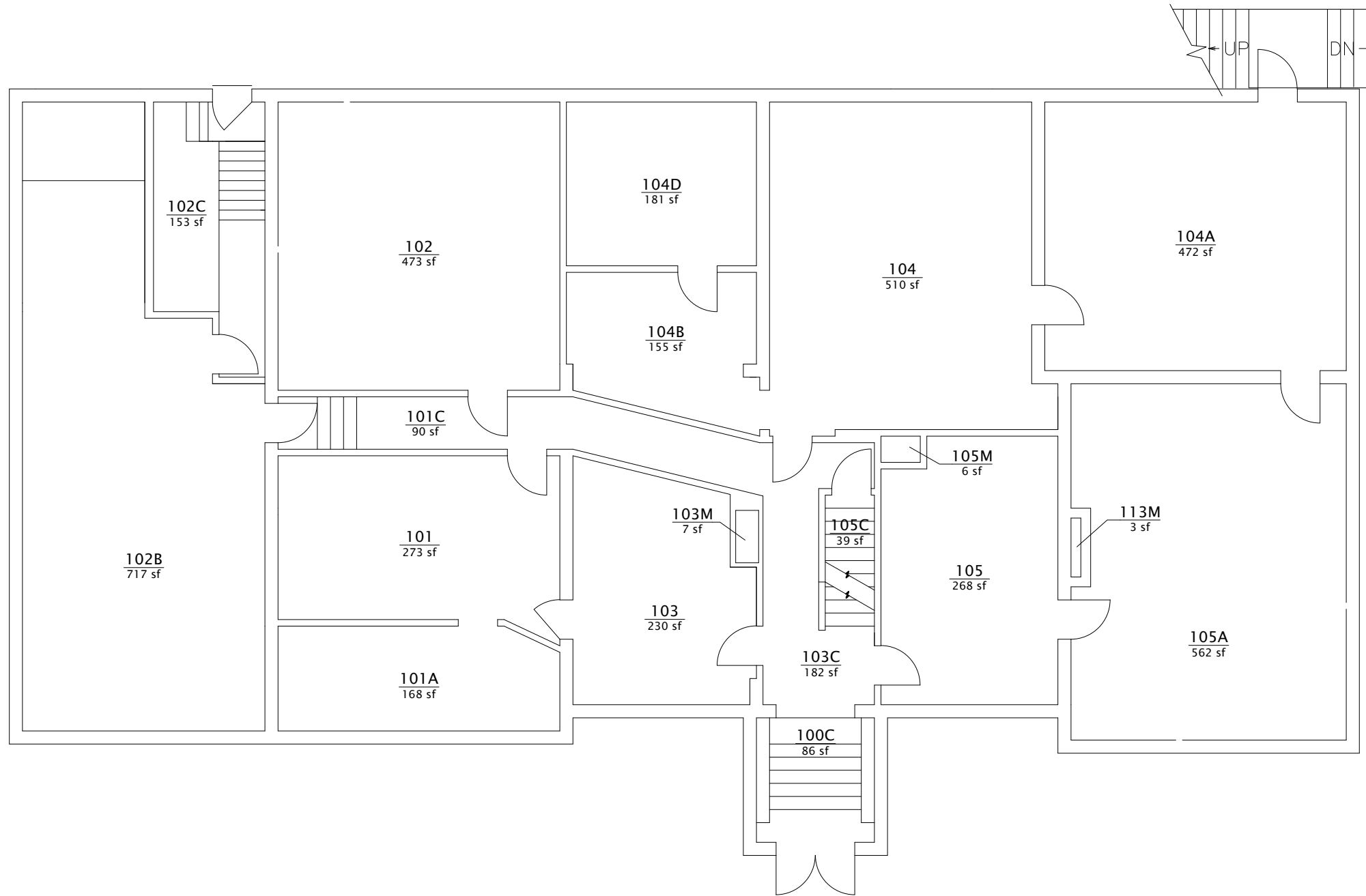
5D003

ROOF PLAN



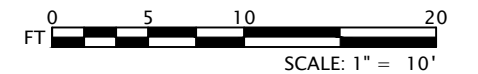
GRAPHIC SCALE





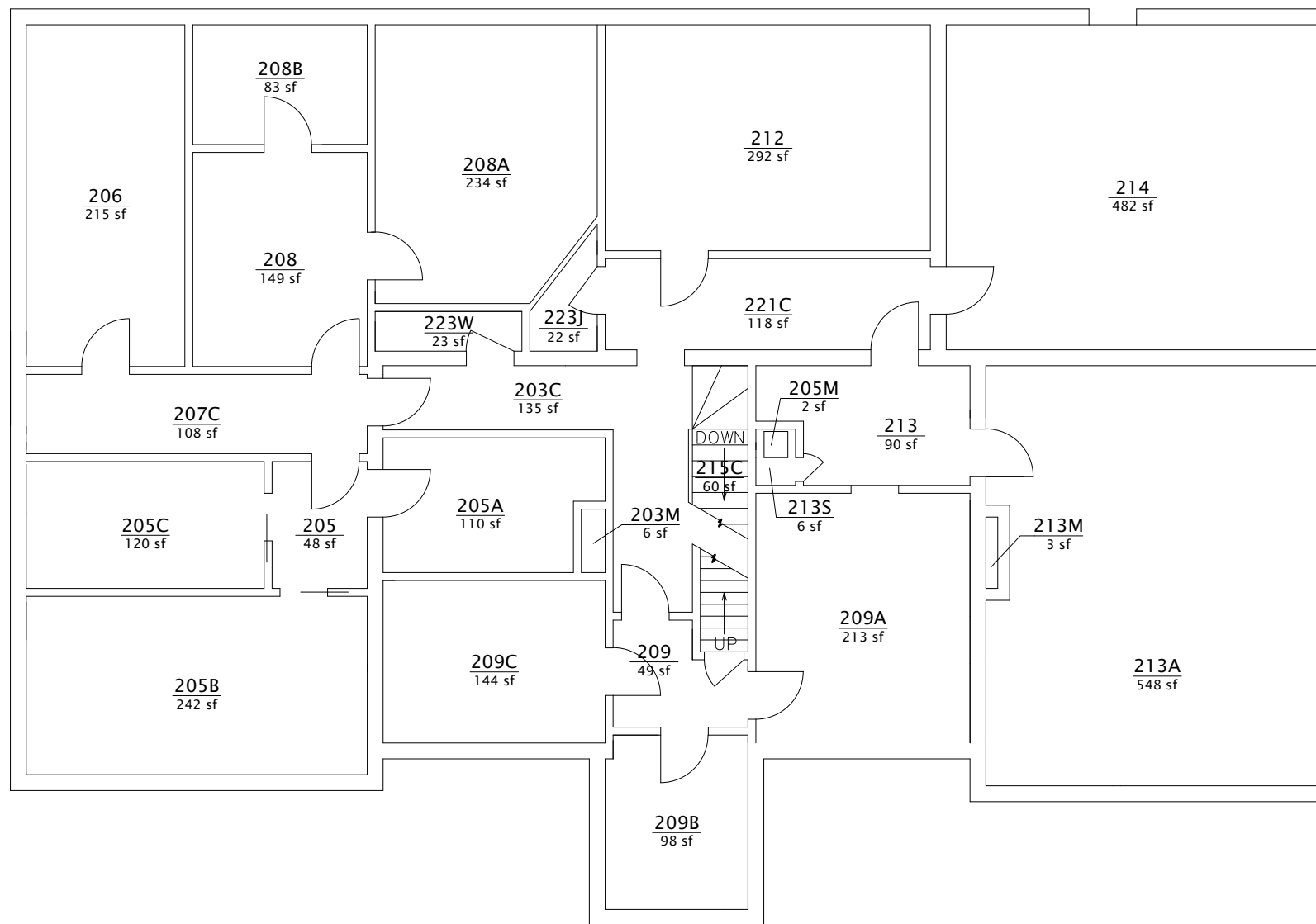
# BASE FLOOR PLAN

## HOLMES HALL



\*-See Chart For Additional Annotation





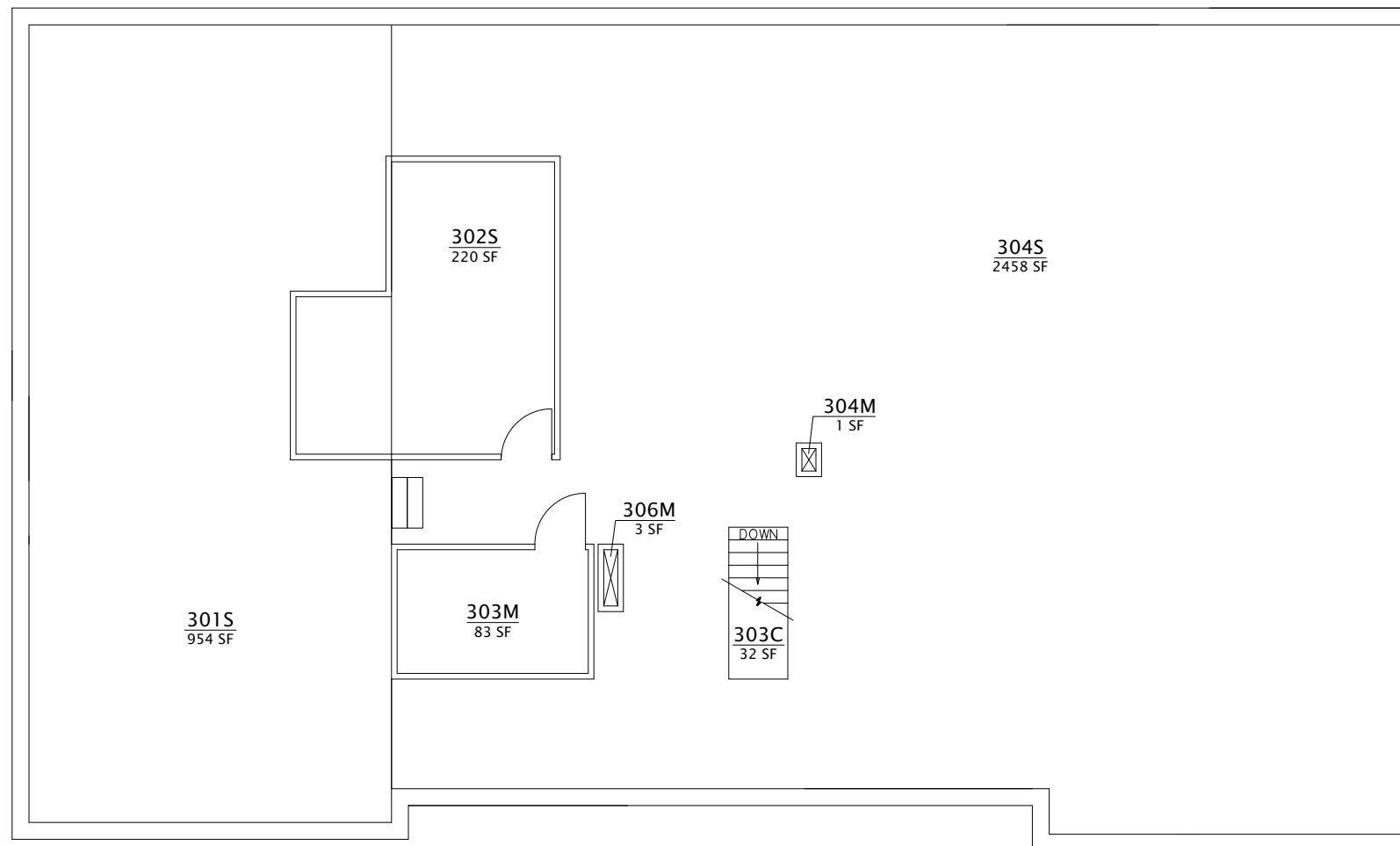
# BASE FLOOR PLAN

## HOLMES HALL



\*-See Chart For Additional Annotation





# BASE FLOOR PLAN

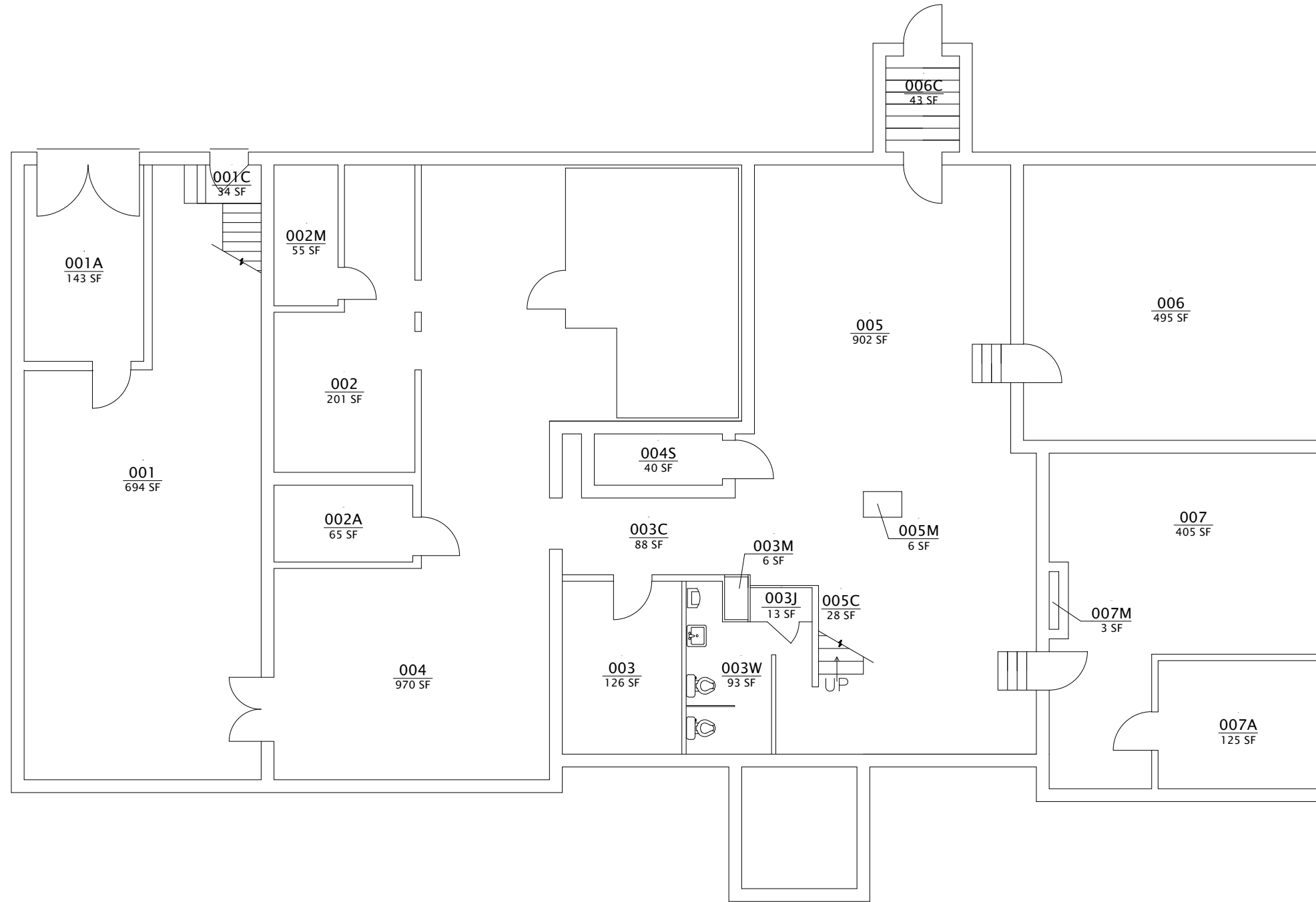
## HOLMES HALL



\*-See Chart For Additional Annotation

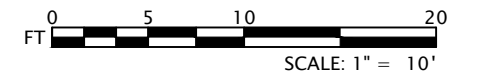













# BASE FLOOR PLAN

## HOLMES HALL



\*-See Chart For Additional Annotation

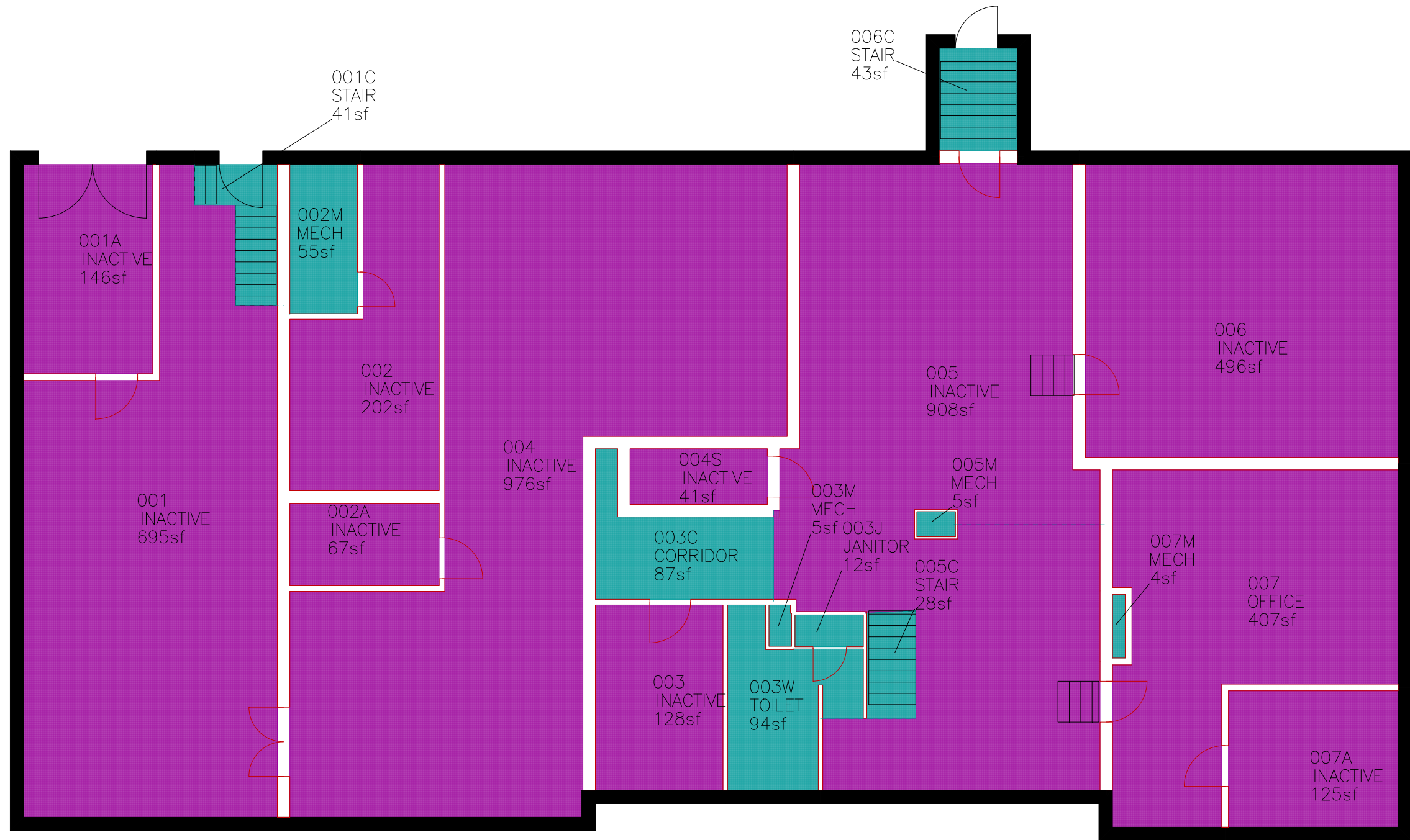


KEY	ORG	LOCATIONS	SPCS	ORG AREA sf
	OECL	3.00	3.00	1,301.77
	OFSN	3.00	3.00	3,632.81
	OHNRS	6.00	6.00	1,189.47
	ONMP	4.00	4.00	1,136.58
	OPLT	32.00	32.00	1,538.09
	OTBD	23.00	23.00	7,183.35
	OVPAA	2.00	2.00	361.87
TOT		73.00	73.00	16,343.95
FICM				

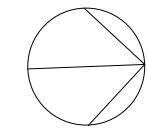
# HOLMES HALL SPACE INVENTORY

KEY	ORG	LOCATIONS	SPCS	ORG AREA sf
<span style="color: red;">■</span>	OECL	0.00	0.00	0.00
<span style="color: green;">■</span>	OFSN	0.00	0.00	0.00
<span style="color: blue;">■</span>	OHNRS	0.00	0.00	0.00
<span style="color: yellow;">■</span>	ONMP	0.00	0.00	0.00
<span style="color: cyan;">■</span>	OPLT	10.00	10.00	374.91
<span style="color: magenta;">■</span>	OTBD	11.00	11.00	4,190.29
<span style="color: gray;">■</span>	OVPAA	0.00	0.00	0.00
<b>TOT</b>		<b>21.00</b>	<b>21.00</b>	<b>4,565.20</b>

5D002B.vfm FICM



HOLMES HALL - B

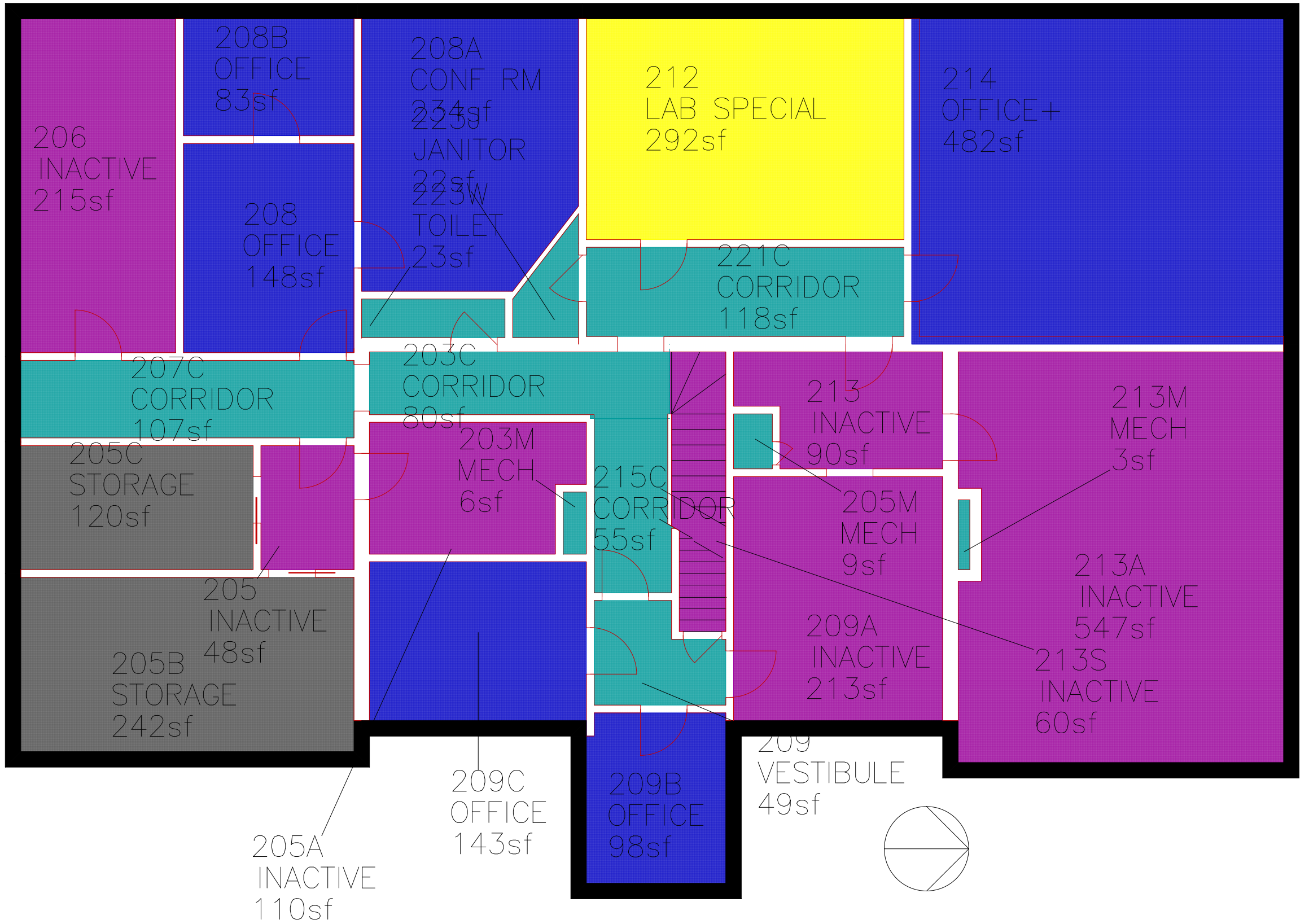


KEY	ORG	LOCATIONS	SPCS	ORG AREA sf
<span style="color: red;">■</span>	OECL	3.00	3.00	1,301.77
<span style="color: green;">■</span>	OFSN	0.00	0.00	0.00
<span style="color: blue;">■</span>	OHNRS	0.00	0.00	0.00
<span style="color: yellow;">■</span>	ONMP	3.00	3.00	844.46
<span style="color: teal;">■</span>	OPLT	8.00	8.00	567.69
<span style="color: purple;">■</span>	OTBD	5.00	5.00	1,709.40
<span style="color: gray;">■</span>	OVPAA	0.00	0.00	0.00
<b>TOT</b>		<b>19.00</b>	<b>19.00</b>	<b>4,423.31</b>
<b>5D0021.vfm FICM</b>				



KEY	ORG	LOCATIONS	SPCS	ORG AREA sf
<span style="color: red;">■</span>	OECL	0.00	0.00	0.00
<span style="color: green;">■</span>	OFSN	0.00	0.00	0.00
<span style="color: blue;">■</span>	OHNRS	6.00	6.00	1,189.47
<span style="color: yellow;">■</span>	ONMP	1.00	1.00	292.13
<span style="color: cyan;">■</span>	OPLT	10.00	10.00	471.88
<span style="color: magenta;">■</span>	OTBD	7.00	7.00	1,283.66
<span style="color: gray;">■</span>	OVPAA	2.00	2.00	361.87
<b>TOT</b>		<b>26.00</b>	<b>26.00</b>	<b>3,599.02</b>

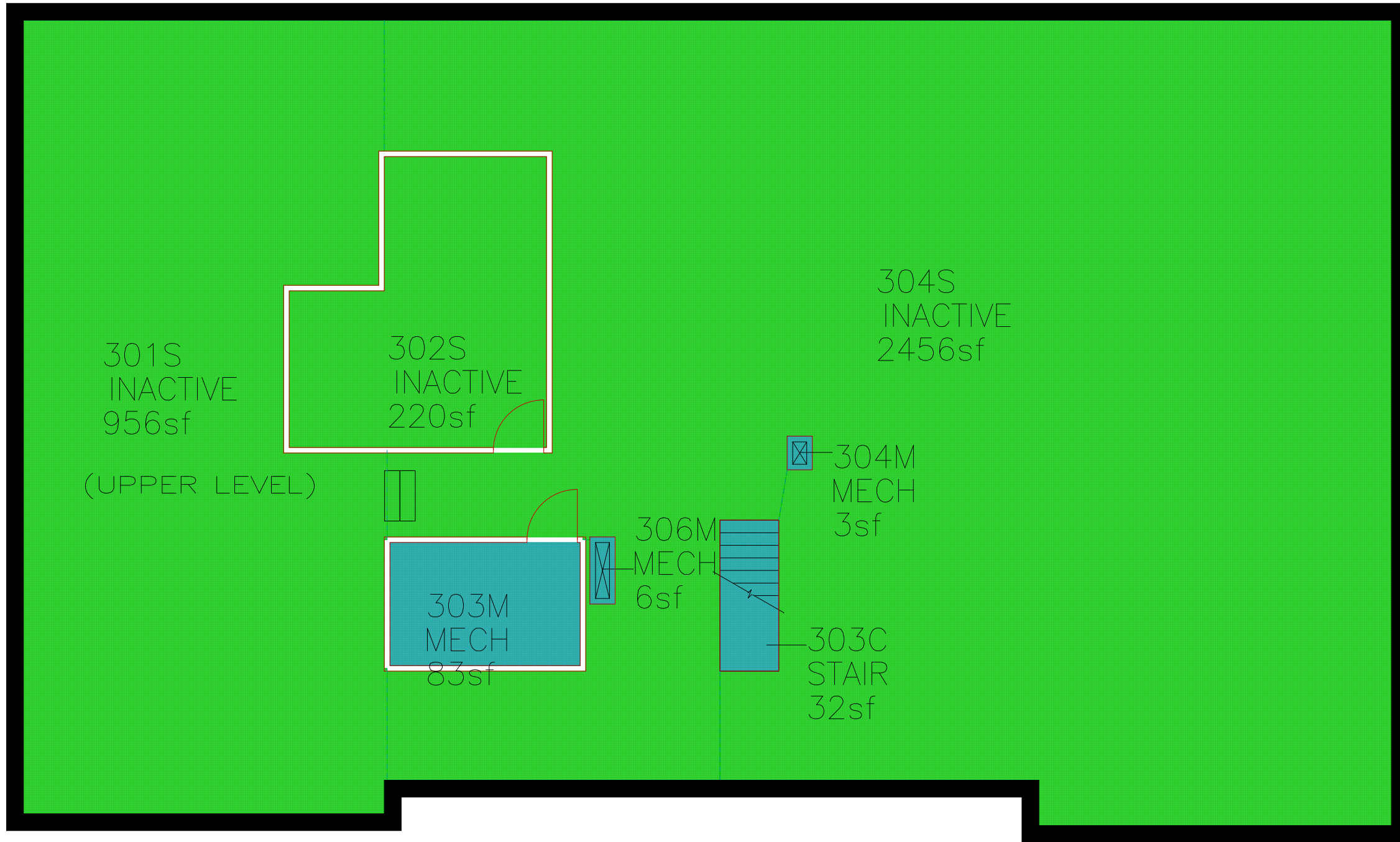
5D0022.vfm FICM



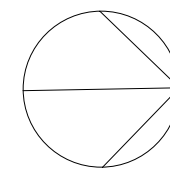
HOLMES HALL - 2

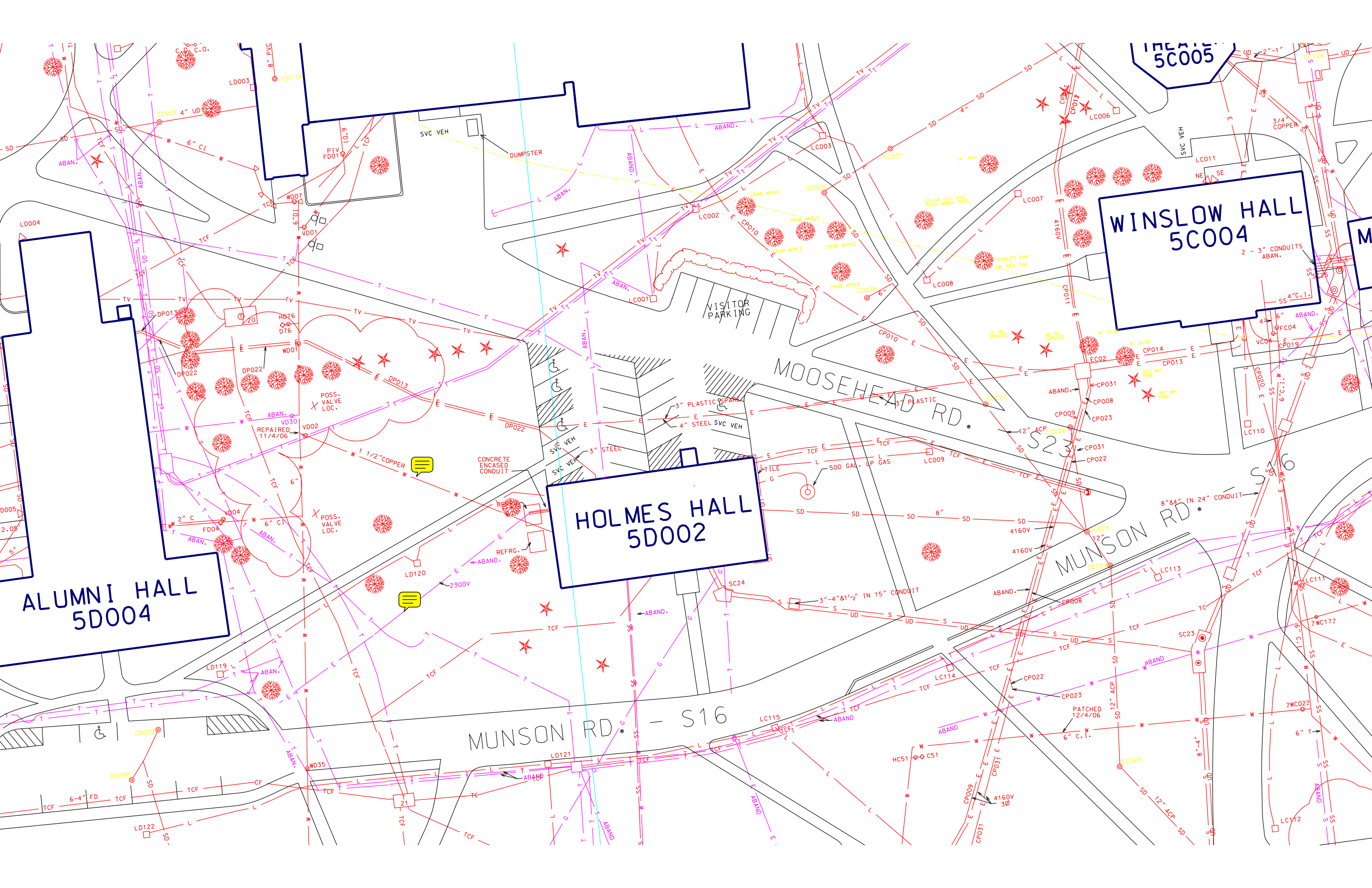
KEY	ORG	LOCATIONS	SPCS	ORG AREA sf
<span style="color: red;">■</span>	OECL	0.00	0.00	0.00
<span style="color: green;">■</span>	OFSN	3.00	3.00	3,632.81
<span style="color: blue;">■</span>	OHNRS	0.00	0.00	0.00
<span style="color: yellow;">■</span>	ONMP	0.00	0.00	0.00
<span style="color: cyan;">■</span>	OPLT	4.00	4.00	123.61
<span style="color: purple;">■</span>	OTBD	0.00	0.00	0.00
<span style="color: gray;">■</span>	OVPAA	0.00	0.00	0.00
<b>TOT</b>		<b>7.00</b>	<b>7.00</b>	<b>3,756.42</b>

5D0023.vfm FICM



HOLMES HALL - 3





ALUMNI HALL  
5D004

HOLMES HALL  
5D002

WINSLOW HALL  
5C004

MUNSON RD - S16

MUNSON RD

MOOSEHEAD RD

5C005

L0004

L0003

PIV  
FD01

SVC VEH

DUMPSTER

VISITOR  
PARKING

CONCRETE  
ENCASED  
CONDUIT

REFRG.

S23

S16

PATCHED  
12/4/06

0005

6-4" FD

LD119

LD118

LD122

LD121

LD120

LD120

HC51

CC023

SC23

LC111

LC110

LC113

LC114

LC115

LC116

LC117

LC118

LC119

LC120

LC121

LC122

LC123

LC124

LC125

LC126

LD004

LD003

LD002

LD001

LD000

LD000

LD000

LD122

LD121

LD120

LD119

LD118

LD117

LD116

LD115

LD114

LD113

LD112

LD111

LD110

LD109

LD108

LD107

LD106

LD105

LD104

LD103

LD102

LD101

LD100

LD122

LD121

LD120

LD119

LD118

LD117

LD116

LD115

LD114

LD113

LD112

LD111

LD110

LD109

LD108

LD107

LD106

LD105

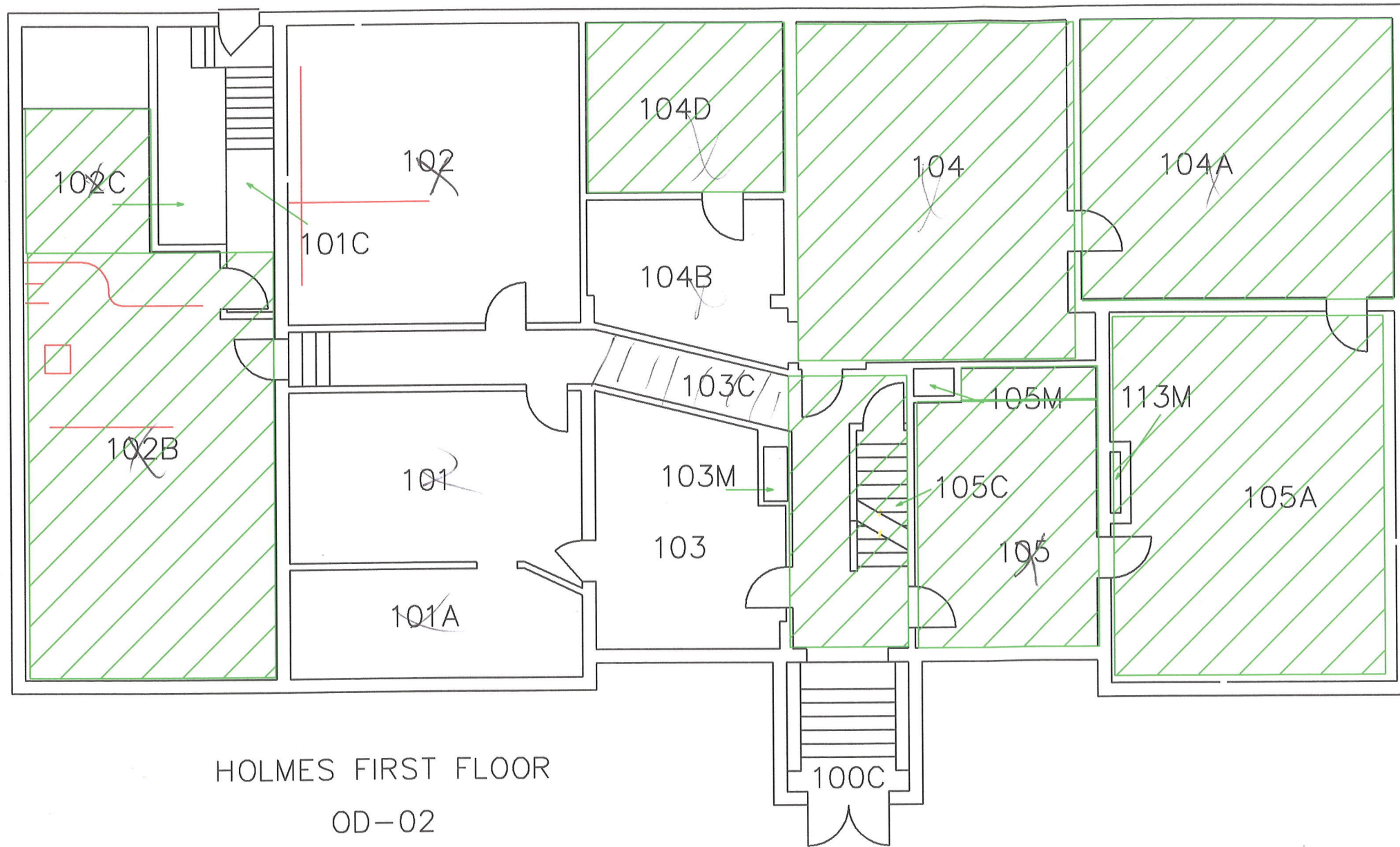
LD104

LD103

LD102




LD101

LD100

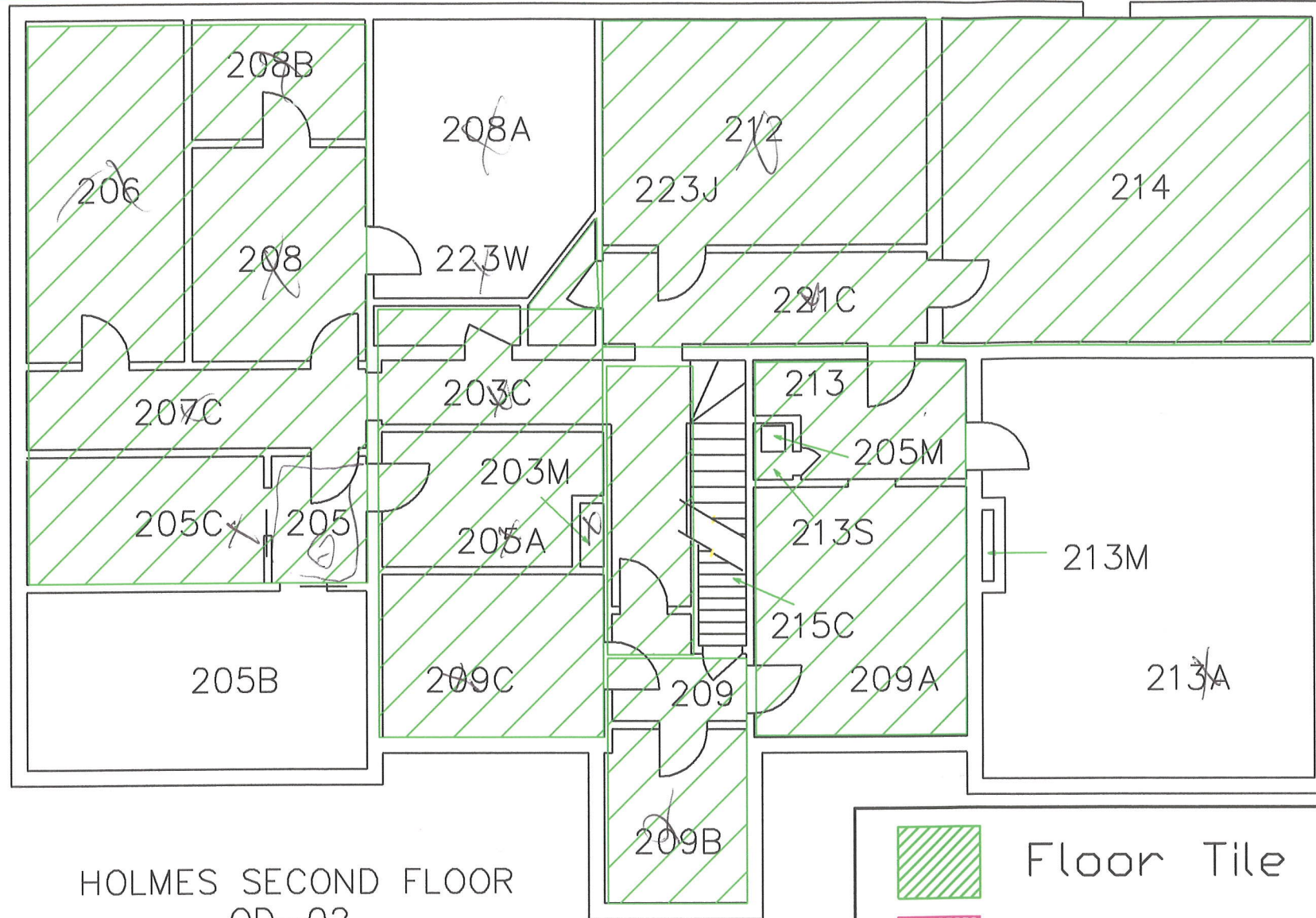


HOLMES FIRST FLOOR  
OD-02






	Floor Tile ACM
	Ceiling Materials ACM
	TSI ACM
Drawing not to scale	
April 2003	
ESP	
Environmental Safety Professionals	





HOLMES SECOND FLOOR  
OD-02



	Floor Tile ACM
	Ceiling Materials ACM
	TSI ACM
Drawing not to scale	
April 2003	
ESP	
Environmental Safety Professionals	

<b>Room 001 Lab</b>	<b>Test Results</b>
<b>Ceiling Description</b> Concrete	(-)
<b>Flooring Description</b> Concrete	(-)
<b>TSI Description</b> Pipe insulation	(+) Chrysotile 150 SF
<b>TSI #2 Description</b> No suspect material	(-)
<b>Wall Material</b> Concrete	(-)
<b>Miscellaneous Description</b> Transite tables	(+) Chrysotile
<b>Room 001A Storage</b>	<b>Test Results</b>
<b>Ceiling Description</b> Concrete	(-)
<b>Flooring Description</b> Concrete	(-)
<b>TSI Description</b> Pipe insulation	(+) Chrysotile 21 SF
<b>TSI #2 Description</b> No suspect material	(-)
<b>Wall Material</b> Concrete	(-)
<b>Miscellaneous Description</b> No suspect material	(-)
<b>Room 002 Lab SVC</b>	<b>Test Results</b>
<b>Ceiling Description</b> Wood	(-)
<b>Flooring Description</b> Concrete	(-)
<b>TSI Description</b> Pipe insulation	(+) Chrysotile 30 SF
<b>TSI #2 Description</b> No suspect material	(-)
<b>Wall Material</b> Concrete	(-)
<b>Miscellaneous Description</b> No suspect material	(-)

<b>Room 002A Storage</b>	<b>Test Results</b>
<b>Ceiling Description</b> 2x2 ceiling tile	(-)
<b>Flooring Description</b> Concrete	(-)
<b>TSI Description</b> Pipe insulation	(+) Chrysotile 35 SF
<b>TSI #2 Description</b> No suspect material	(-)
<b>Wall Material</b> Brick, mortar	(-)
<b>Miscellaneous Description</b> No suspect material	(-)
<b>Room 002M Mechanical</b>	<b>Test Results</b>
<b>Ceiling Description</b> Wood	(-)
<b>Flooring Description</b> Concrete	(-)
<b>TSI Description</b> No suspect material	(-)
<b>TSI #2 Description</b> No suspect material	(-)
<b>Wall Material</b> Concrete	(-)
<b>Miscellaneous Description</b> No suspect material	(-)
<b>Room 003 Storage</b>	<b>Test Results</b>
<b>Ceiling Description</b> Wood	(-)
<b>Flooring Description</b> Concrete	(-)
<b>TSI Description</b> Pipe insulation	(+) Chrysotile 30 SF
<b>TSI #2 Description</b> No suspect material	(-)
<b>Wall Material</b> Concrete	(-)
<b>Miscellaneous Description</b> No suspect material	(-)

<b>Room 003C Corridor</b>	<b>Test Results</b>
<b>Ceiling Description</b> Wood	(-)
<b>Flooring Description</b> Concrete	(-)
<b>TSI Description</b> Pipe insulation	(+) Chrysotile 30 SF
<b>TSI #2 Description</b> No suspect material	(-)
<b>Wall Material</b> Brick, mortar	(-)
<b>Miscellaneous Description</b> No suspect material	(-)
<b>Room 003J Janitor</b>	<b>Test Results</b>
<b>Ceiling Description</b> Wood	(-)
<b>Flooring Description</b> Concrete	(-)
<b>TSI Description</b> No suspect material	(-)
<b>TSI #2 Description</b> No suspect material	(-)
<b>Wall Material</b> Wood	(-)
<b>Miscellaneous Description</b> No suspect material	(-)
<b>Room 003M Mechanical</b>	<b>Test Results</b>
<b>Ceiling Description</b> No suspect material	(-)
<b>Flooring Description</b> No suspect material	(-)
<b>TSI Description</b> No suspect material	(-)
<b>TSI #2 Description</b> No suspect material	(-)
<b>Wall Material</b> No suspect material	(-)
<b>Miscellaneous Description</b> No suspect material	(-)

<b>Room 003W Toilet</b>	<b>Test Results</b>
<b>Ceiling Description</b> Wood	(-)
<b>Flooring Description</b> Concrete	(-)
<b>TSI Description</b> No suspect material	(-)
<b>TSI #2 Description</b> No suspect material	(-)
<b>Wall Material</b> Wood	(-)
<b>Miscellaneous Description</b> No suspect material	(-)
<b>Room 004 Lab SVC</b>	<b>Test Results</b>
<b>Ceiling Description</b> Wood	(-)
<b>Flooring Description</b> Concrete	(-)
<b>TSI Description</b> Pipe insulation	(+) Chrysotile 225 SF
<b>TSI #2 Description</b> No suspect material	(-)
<b>Wall Material</b> Concrete	(-)
<b>Miscellaneous Description</b> Transite tables	(+) Chrysotile
<b>Room 004S Storage</b>	<b>Test Results</b>
<b>Ceiling Description</b> Concrete	(-)
<b>Flooring Description</b> Concrete	(-)
<b>TSI Description</b> No suspect material	(-)
<b>TSI #2 Description</b> No suspect material	(-)
<b>Wall Material</b> Concrete	(-)
<b>Miscellaneous Description</b> No suspect material	(-)

<b>Room 005 Storage</b>	<b>Test Results</b>
<b>Ceiling Description</b> Wood	(-)
<b>Flooring Description</b> Concrete	(-)
<b>TSI Description</b> Pipe insulation	(+) Chrysotile 250 SF
<b>TSI #2 Description</b> Tank insulation	(+) Chrysotile
<b>Wall Material</b> Concrete, mortar	(-)
<b>Miscellaneous Description</b> Transite sheets above old boiler	(+) Chrysotile
<b>Room 005C Stairs</b>	<b>Test Results</b>
<b>Ceiling Description</b> Plaster	(-)
<b>Flooring Description</b> Wood	(-)
<b>TSI Description</b> No suspect material	(-)
<b>TSI #2 Description</b> No suspect material	(-)
<b>Wall Material</b> Wood	(-)
<b>Miscellaneous Description</b> No suspect material	(-)
<b>Room 005M Mechanical</b>	<b>Test Results</b>
<b>Ceiling Description</b> No suspect material	(-)
<b>Flooring Description</b> No suspect material	(-)
<b>TSI Description</b> No suspect material	(-)
<b>TSI #2 Description</b> No suspect material	(-)
<b>Wall Material</b> No suspect material	(-)
<b>Miscellaneous Description</b> Brick chimney	(-)

<b>Room 006 Storage</b>	<b>Test Results</b>
<b>Ceiling Description</b> Wood	(-)
<b>Flooring Description</b> Concrete	(-)
<b>TSI Description</b> Pipe insulation	(+) Chrysotile 45 SF
<b>TSI #2 Description</b> No suspect material	(-)
<b>Wall Material</b> Brick, mortar	(-)
<b>Miscellaneous Description</b> Transite heater bases	(+) Chrysotile
<b>Room 006C Stairs</b>	<b>Test Results</b>
<b>Ceiling Description</b> Concrete	(-)
<b>Flooring Description</b> Concrete	(-)
<b>TSI Description</b> No suspect material	(-)
<b>TSI #2 Description</b> No suspect material	(-)
<b>Wall Material</b> Concrete	(-)
<b>Miscellaneous Description</b> No suspect material	(-)
<b>Room 007 Office</b>	<b>Test Results</b>
<b>Ceiling Description</b> Wood	(-)
<b>Flooring Description</b> Concrete	(-)
<b>TSI Description</b> Pipe insulation	(+) Chrysotile 40 SF
<b>TSI #2 Description</b> No suspect material	(-)
<b>Wall Material</b> Brick, mortar	(-)
<b>Miscellaneous Description</b> Transite tables	(+) Chrysotile

<b>Room 007A Lab SVC</b>	<b>Test Results</b>
<b>Ceiling Description</b> Wood	(-)
<b>Flooring Description</b> Concrete	(-)
<b>TSI Description</b> Pipe insulation	(+) Chrysotile 20 SF
<b>TSI #2 Description</b> No suspect material	(-)
<b>Wall Material</b> Brick, mortar	(-)
<b>Miscellaneous Description</b> Transite tables	(+) Chrysotile



<b>Room 101 Office</b>	<b>Test Results</b>
<b>Ceiling Description</b> Tin	(-)
<b>Flooring Description</b> 1x1 beige tile	(-)
<b>TSI Description</b> Pipe Insulation	(+) Chrysotile 24 LF
<b>TSI #2 Description</b> No suspect material	(-)
<b>Wall Material</b> Plaster	(-)
<b>Miscellaneous Description</b> No suspect material	(-)
<b>Room 101A Office</b>	<b>Test Results</b>
<b>Ceiling Description</b> Tin	(-)
<b>Flooring Description</b> 1x1 beige tile	(-)
<b>TSI Description</b> Pipe Insulation	(+) Chrysotile 11 LF
<b>TSI #2 Description</b> No suspect material	(-)
<b>Wall Material</b> Plaster	(-)
<b>Miscellaneous Description</b> No suspect material	(-)
<b>Room 101C Stairs</b>	<b>Test Results</b>
<b>Ceiling Description</b> Plaster	(-)
<b>Flooring Description</b> 1x1 blue and gray tile	(-)
<b>TSI Description</b> Pipe Insulation	(+) Chrysotile 30 LF
<b>TSI #2 Description</b> No suspect material	(-)
<b>Wall Material</b> Plaster	(-)
<b>Miscellaneous Description</b> Transite table	(+) Chrysotile

<b>Room 102 Lab</b>	<b>Test Results</b>
<b>Ceiling Description</b> Drywall, 2x2 tile	(-)
<b>Flooring Description</b> 1x1 blue and gray tile	(-)
<b>TSI Description</b> Pipe Insulation	(+) Chrysotile 30 LF
<b>TSI #2 Description</b> No suspect material	(-)
<b>Wall Material</b> Plaster	(-)
<b>Miscellaneous Description</b> Transite table	(+) Chrysotile
<b>Room 102B Lab</b>	<b>Test Results</b>
<b>Ceiling Description</b> Concrete	(-)
<b>Flooring Description</b> 9x9 gray tile	(+) Chrysotile 380 SF
<b>TSI Description</b> Pipe Insulation	(+) Chrysotile 70 LF
<b>TSI #2 Description</b> No suspect material	(-)
<b>Wall Material</b> Concrete	(-)
<b>Miscellaneous Description</b> Transite hoods, tables, ducts 24 SF of countertop on island bench removed	(+) Chrysotile
<b>Room 102C Unfinished</b>	<b>Test Results</b>
<b>Ceiling Description</b> Concrete	(-)
<b>Flooring Description</b> 9x9 gray tile	(+)
<b>TSI Description</b> No suspect material	(-)
<b>TSI #2 Description</b> No suspect material	(-)
<b>Wall Material</b> Concrete	(-)
<b>Miscellaneous Description</b> No suspect material	(-)

<b>Room 103 Lab</b>	<b>Test Results</b>
<b>Ceiling Description</b> Plaster	(-)
<b>Flooring Description</b> 1x1 beige tile	(-)
<b>TSI Description</b> No suspect material	(-)
<b>TSI #2 Description</b> No suspect material	(-)
<b>Wall Material</b> Plaster	(-)
<b>Miscellaneous Description</b> No suspect material	(-)
<b>Room 103C Corridor</b>	<b>Test Results</b>
<b>Ceiling Description</b> Tin	(-)
<b>Flooring Description</b> 9x9 red tile	(+) Chrysotile 286 SF
<b>TSI Description</b> No suspect material	(-)
<b>TSI #2 Description</b> No suspect material	(-)
<b>Wall Material</b> Plaster	(-)
<b>Miscellaneous Description</b> No suspect material	(-)
<b>Room 103M Mechanical</b>	<b>Test Results</b>
<b>Ceiling Description</b> No suspect material	(-)
<b>Flooring Description</b> No suspect material	(-)
<b>TSI Description</b> No suspect material	(-)
<b>TSI #2 Description</b> No suspect material	(-)
<b>Wall Material</b> No suspect material	(-)
<b>Miscellaneous Description</b> No suspect material	(-)

<b>Room 104 Lab</b>	<b>Test Results</b>
<b>Ceiling Description</b> Plaster	(-)
<b>Flooring Description</b> 9x9 gray tile	(+) Chrysotile 404 SF
<b>TSI Description</b> Pipe Insulation	(+) Chrysotile 55 LF
<b>TSI #2 Description</b> No suspect material	(-)
<b>Wall Material</b> Plaster	(-)
<b>Miscellaneous Description</b> Transite tables	(+) Chrysotile
<b>Room 104A Lab</b>	<b>Test Results</b>
<b>Ceiling Description</b> 2x2 ceiling tile	(-)
<b>Flooring Description</b> 9x9 gray tile	(+) Chrysotile 426 SF
<b>TSI Description</b> No suspect material	(-)
<b>TSI #2 Description</b> No suspect material	(-)
<b>Wall Material</b> Plaster	(-)
<b>Miscellaneous Description</b> No suspect material	(-)
<b>Room 104B Storage</b>	<b>Test Results</b>
<b>Ceiling Description</b> Plaster	(-)
<b>Flooring Description</b> Wood	(-)
<b>TSI Description</b> No suspect material	(-)
<b>TSI #2 Description</b> No suspect material	(-)
<b>Wall Material</b> Plaster	(-)
<b>Miscellaneous Description</b> No suspect material	(-)

<b>Room 104D Lab</b>	<b>Test Results</b>
<b>Ceiling Description</b> Plaster	(-)
<b>Flooring Description</b> 9x9 gray tile	(+) Chrysotile 175 SF
<b>TSI Description</b> No suspect material	(-)
<b>TSI #2 Description</b> No suspect material	(-)
<b>Wall Material</b> Plaster	(-)
<b>Miscellaneous Description</b> No suspect material	(-)
<b>Room 105 Lab</b>	<b>Test Results</b>
<b>Ceiling Description</b> 2x4 ceiling tile	(-)
<b>Flooring Description</b> 9x9 gray tile	(+) Chrysotile 130 SF
<b>TSI Description</b> No suspect material	(-)
<b>TSI #2 Description</b> No suspect material	(-)
<b>Wall Material</b> Plaster	(-)
<b>Miscellaneous Description</b> Transite tables	(+) Chrysotile
<b>Room 105A Lab</b>	<b>Test Results</b>
<b>Ceiling Description</b> 2x4 tile	(-)
<b>Flooring Description</b> 9x9 gray tile	(+) Chrysotile 542 SF
<b>TSI Description</b> Pipe Insulation	(+) Chrysotile 20 LF
<b>TSI #2 Description</b> No suspect material	(-)
<b>Wall Material</b> Plaster	(-)
<b>Miscellaneous Description</b> Transite tables	(+) Chrysotile

<b>Room 105C Stairs</b>	<b>Test Results</b>
<b>Ceiling Description</b> Tin	(-)
<b>Flooring Description</b> Wood	(-)
<b>TSI Description</b> No suspect material	(-)
<b>TSI #2 Description</b> No suspect material	(-)
<b>Wall Material</b> Plaster	(-)
<b>Miscellaneous Description</b> No suspect material	(-)
<b>Room 105M Mechanical</b>	<b>Test Results</b>
<b>Ceiling Description</b> No suspect material	(-)
<b>Flooring Description</b> No suspect material	(-)
<b>TSI Description</b> No suspect material	(-)
<b>TSI #2 Description</b> No suspect material	(-)
<b>Wall Material</b> No suspect material	(-)
<b>Miscellaneous Description</b> No suspect material	(-)

<b>Room 203C Corridor</b>	<b>Test Results</b>
<b>Ceiling Material</b> Tin	(-)
<b>Flooring Description</b> 9x9 red tile	(+) Chrysotile 135 SF
<b>TSI Description</b> No suspect material	(-)
<b>TSI #2 Description</b> No suspect material	(-)
<b>Wall Material</b> Plaster	(-)
<b>Miscellaneous Description</b> No suspect material	(-)
<b>Room 203M Mechanical</b>	<b>Test Results</b>
<b>Ceiling Material</b> No suspect material	(-)
<b>Flooring Description</b> No suspect material	(-)
<b>TSI Description</b> No suspect material	(-)
<b>TSI #2 Description</b> No suspect material	(-)
<b>Wall Material</b> No suspect material	(-)
<b>Miscellaneous Description</b> No suspect material	(-)
<b>Room 205 Lab</b>	<b>Test Results</b>
<b>Ceiling Material</b> 2x4 ceiling tile	(-)
<b>Flooring Description</b> 1x1 green tile	(-)
<b>TSI Description</b> No suspect material	(-)
<b>TSI #2 Description</b> No suspect material	(-)
<b>Wall Material</b> Plaster	(-)
<b>Miscellaneous Description</b> No suspect material	(-)

<b>Room 205A Lab</b>	<b>Test Results</b>
<b>Ceiling Material</b> 2x4 ceiling tile	(-)
<b>Flooring Description</b> 9x9 gray tile	(+) Chrysotile 120 SF
<b>TSI Description</b> No suspect material	(-)
<b>TSI #2 Description</b> No suspect material	(-)
<b>Wall Material</b> Plaster	(-)
<b>Miscellaneous Description</b> Transite table	(+) Chrysotile
<b>Room 205B Lab</b>	<b>Test Results</b>
<b>Ceiling Material</b> 2x4 ceiling tile	(-)
<b>Flooring Description</b> 1x1 green tile	(-)
<b>TSI Description</b> No suspect material	(-)
<b>TSI #2 Description</b> No suspect material	(-)
<b>Wall Material</b> Plaster	(-)
<b>Miscellaneous Description</b> 9x9 gray tile under cabinets	(+) Chrysotile
<b>Room 205C Lab</b>	<b>Test Results</b>
<b>Ceiling Material</b> 2x4 ceiling tile	(-)
<b>Flooring Description</b> 9x9 gray tile	(+) Chrysotile 50 SF
<b>TSI Description</b> No suspect material	(-)
<b>TSI #2 Description</b> No suspect material	(-)
<b>Wall Material</b> Plaster	(-)
<b>Miscellaneous Description</b> No suspect material	(-)



<b>Room 205M Mechanical</b>	<b>Test Results</b>
<b>Ceiling Material</b> No suspect material	(-)
<b>Flooring Description</b> No suspect material	(-)
<b>TSI Description</b> No suspect material	(-)
<b>TSI #2 Description</b> No suspect material	(-)
<b>Wall Material</b> No suspect material	(-)
<b>Miscellaneous Description</b> Brick chimney	(-)
<b>Room 206 Lab</b>	<b>Test Results</b>
<b>Ceiling Material</b> 2x4 ceiling tile	(-)
<b>Flooring Description</b> 9x9 gray tile	(+) Chrysotile 196 SF
<b>TSI Description</b> No suspect material	(-)
<b>TSI #2 Description</b> No suspect material	(-)
<b>Wall Material</b> Plaster	(-)
<b>Miscellaneous Description</b> Transite hood	(+) Chrysotile
<b>Room 207C Corridor</b>	<b>Test Results</b>
<b>Ceiling Material</b> 2x4 ceiling tile	(-)
<b>Flooring Description</b> 9x9 gray tile	(+) Chrysotile 108 SF
<b>TSI Description</b> No suspect material	(-)
<b>TSI #2 Description</b> No suspect material	(-)
<b>Wall Material</b> Plaster	(-)
<b>Miscellaneous Description</b> No suspect material	(-)

<b>Room 208 Office</b>	<b>Test Results</b>
<b>Ceiling Material</b> 2x4 ceiling tile	(-)
<b>Flooring Description</b> 9x9 gray tile	(+) Chrysotile 110 SF
<b>TSI Description</b> No suspect material	(-)
<b>TSI #2 Description</b> No suspect material	(-)
<b>Wall Material</b> Plaster	(-)
<b>Miscellaneous Description</b> No suspect material	(-)
<b>Room 208A Office</b>	<b>Test Results</b>
<b>Ceiling Material</b> 2x4 ceiling tile	(-)
<b>Flooring Description</b> 9x9 gray tile	(+) Chrysotile 184 SF
<b>TSI Description</b> No suspect material	(-)
<b>TSI #2 Description</b> No suspect material	(-)
<b>Wall Material</b> Plaster	(-)
<b>Miscellaneous Description</b> No suspect material	(-)
<b>Room 208B Office</b>	<b>Test Results</b>
<b>Ceiling Material</b> 2x4 ceiling tile	(-)
<b>Flooring Description</b> 9x9 gray tile	(+) Chrysotile 82 SF
<b>TSI Description</b> No suspect material	(-)
<b>TSI #2 Description</b> No suspect material	(-)
<b>Wall Material</b> Plaster	(-)
<b>Miscellaneous Description</b> No suspect material	(-)

<b>Room 209 Corridor</b>	<b>Test Results</b>
<b>Ceiling Material</b> Plaster	(-)
<b>Flooring Description</b> 9x9 gray tile	(+) Chrysotile 62 SF
<b>TSI Description</b> No suspect material	(-)
<b>TSI #2 Description</b> No suspect material	(-)
<b>Wall Material</b> Plaster	(-)
<b>Miscellaneous Description</b> No suspect material	(-)
<b>Room 209A Lab</b>	<b>Test Results</b>
<b>Ceiling Material</b> 2x4 ceiling tile	(-)
<b>Flooring Description</b> 9x9 white tile	(+) Chrysotile 205 SF
<b>TSI Description</b> No suspect material	(-)
<b>TSI #2 Description</b> No suspect material	(-)
<b>Wall Material</b> Plaster	(-)
<b>Miscellaneous Description</b> Transite hoods	(+) Chrysotile
<b>Room 209B Office</b>	<b>Test Results</b>
<b>Ceiling Material</b> Plaster	(-)
<b>Flooring Description</b> 9x9 gray tile	(+) Chrysotile 98 SF
<b>TSI Description</b> No suspect material	(-)
<b>TSI #2 Description</b> No suspect material	(-)
<b>Wall Material</b> Plaster	(-)
<b>Miscellaneous Description</b> No suspect material	(-)

<b>Room 209C Office</b>	<b>Test Results</b>
<b>Ceiling Material</b> 2x4 ceiling tile	(-)
<b>Flooring Description</b> 9x9 gray tile under carpet	(+) Chrysotile 136 SF
<b>TSI Description</b> No suspect material	(-)
<b>TSI #2 Description</b> No suspect material	(-)
<b>Wall Material</b> Plaster	(-)
<b>Miscellaneous Description</b> No suspect material	(-)
<b>Room 212 Lab</b>	<b>Test Results</b>
<b>Ceiling Material</b> Plaster	(-)
<b>Flooring Description</b> 9x9 gray tile	(+) Chrysotile 259 SF
<b>TSI Description</b> No suspect material	(-)
<b>TSI #2 Description</b> No suspect material	(-)
<b>Wall Material</b> Plaster	(-)
<b>Miscellaneous Description</b> Chemrock lab tops	(-)
<b>Room 212C Corridor</b>	<b>Test Results</b>
<b>Ceiling Material</b> Plaster	(-)
<b>Flooring Description</b> 9x9 gray tile	(+) Chrysotile 120 SF
<b>TSI Description</b> No suspect material	(-)
<b>TSI #2 Description</b> No suspect material	(-)
<b>Wall Material</b> Plaster	(-)
<b>Miscellaneous Description</b> No suspect material	(-)

<b>Room 213 Lab</b>	<b>Test Results</b>
<b>Ceiling Material</b> Plaster	(-)
<b>Flooring Description</b> 9x9 white tile	(+) Chrysotile 87 SF
<b>TSI Description</b> Pipe insulation	(+) Chrysotile 25 LF
<b>TSI #2 Description</b> Mudded fittings	(+) Chrysotile
<b>Wall Material</b> Plaster	(-)
<b>Miscellaneous Description</b> Transite table	(+)
<b>Room 213A Lab</b>	<b>Test Results</b>
<b>Ceiling Material</b> 2x4 ceiling tile	(-)
<b>Flooring Description</b> 1x1 beige tile	(-)
<b>TSI Description</b> No suspect material	(-)
<b>TSI #2 Description</b> No suspect material	(-)
<b>Wall Material</b> Plaster	(-)
<b>Miscellaneous Description</b> Vibration joints	(+) Chrysotile
<b>Room 214 Office</b>	<b>Test Results</b>
<b>Ceiling Material</b> Tin	(-)
<b>Flooring Description</b> 9x9 gray tile	(+) Chrysotile 430 SF
<b>TSI Description</b> No suspect material	(-)
<b>TSI #2 Description</b> No suspect material	(-)
<b>Wall Material</b> Plaster	(-)
<b>Miscellaneous Description</b> No suspect material	(-)

<b>Room 215C Stairs</b>	<b>Test Results</b>
<b>Ceiling Material</b> Plaster	(-)
<b>Flooring Description</b> Wood	(-)
<b>TSI Description</b> No suspect material	(-)
<b>TSI #2 Description</b> No suspect material	(-)
<b>Wall Material</b> Plaster	(-)
<b>Miscellaneous Description</b> No suspect material	(-)
<b>Room 223W Toilet</b>	<b>Test Results</b>
<b>Ceiling Material</b> Plaster	(-)
<b>Flooring Description</b> 9x9 gray tile	(+) Chrysotile 34 SF
<b>TSI Description</b> No suspect material	(-)
<b>TSI #2 Description</b> No suspect material	(-)
<b>Wall Material</b> Plaster	(-)
<b>Miscellaneous Description</b> No suspect material	(-)

SURVEY MAP NO. D 03

SURVEY MAP NAME University of Maine, Orono

MHPC USE ONLY

INVENTORY NO.

**MAINE HISTORIC PRESERVATION COMMISSION**

**Historic Building/Structure Survey Form**

1. PROPERTY NAME (HISTORIC):	COBURN HALL		
2. PROPERTY NAME (OTHER):	COBURN HALL		
3. STREET ADDRESS:	OD 03		
4. TOWN:	ORONO	5. COUNTY:	PENOBSCOT
6. DATE RECORDED	1/8/02	7. SURVEYOR:	SARA K. MARTIN
8. OWNER NAME:	UNIVERSITY OF MAINE	ADDRESS:	ORONO, ME
9. PRIMARY USE (PRESENT):	EDUCATION		
10. CONDITION:	FAIR		

**ARCHITECTURAL DATA**

11. PRIMARY STYLISTIC CATEGORY:	RICHARDSONIAN ROMANESQUE
OTHER STYLISTIC CATEGORY:	
13. HEIGHT:	2 1/2 STORY
14. PRIMARY FACADE WIDTH (MAIN BLOCK; USE GROUND FLOOR):	3 BAY
15. APPENDAGES:	REAR ELL, DORMERS, SHED

**PHOTOGRAPH**



16. PORCH:	NONE
17. PLAN:	OTHER
18. PRIMARY STRUCTURAL SYSTEM:	BRICK
19. CHIMNEY PLACEMENT:	NONE
20. ROOF CONFIGURATION:	MANSARD
21. ROOF MATERIAL:	SLATE
22. EXTERIOR WALL MATERIALS:	BRICK (BROWNSTONE TRIM)
23. FOUNDATION MATERIAL:	GRANITE
24. OUTBUILDINGS/FEATURES:	NONE

### HISTORICAL DATA

25. DOCUMENTED DATE OF CONSTRUCTION:	
26. ESTIMATED DATE OF CONSTRUCTION:	1888
27. DATE MAJOR ADDITIONS/ALTERATIONS:	1930s, 1935, 1978, 1980
28. ARCHITECT:	FRANK E. KIDDER
29. CONTRACTOR:	J. & J. PHILBROOK (PORTLA
30. ORIGINAL OWNER:	UNIVERSITY OF MAINE
31. SUBSEQUENT SIGNIFICANT OWNER:	NONE
32. CULTURAL/ETHNIC AFFILIATION:	
33. HISTORIC CONTEXT(S):	EDUCATION
34. COMMENTS/SOURCES:	

NAMED IN HONOR OF GOVERNOR ABNER COBURN, PRESIDENT OF THE BOARD OF TRUSTEES, 1867-1879; SUPERINTENDENT OF CONSTRUCTION: GEORGE H. HAMLIN (ENGINEERING PROFESSOR). TIN CEILINGS ON 1ST & 2ND FLOORS, NICELY CARVED WOODEN BALUSTERS ON 1ST & 2ND FLOOR STAIRCASES--ICANTHUS LEAVES ON NEWEL POSTS. DIVIDED STAIRCASE ON 2ND FLOOR. PRINCIPAL (WEST) ENTRY SURMOUNTED BY TRANSOM & FLANKED BY SIDELIGHTS.

1930s: GREENHOUSE ATTACHED TO BUILDING (NO LONGER EXTANT).

1935: INTERNAL MODIFICATIONS (CROWELL & LANCASTER, ARCHITECTS).

1978: STRUCTURAL REPAIRS TO EAST WING. (WEBSTER, EBBESON, BALDWIN, DAY) 1980: 3 CHIMNEYS & SKYLIGHTS REMOVED FROM WEST WING, REROOFING. (WEBSTER, BALDWIN, DAY, ROHMAN).

PHI KAPPA PHI, NATIONAL HONOR SOCIETY, ESTABLISHED IN COBURN HALL IN 1897.

35. HISTORICAL DRAWINGS EXIST:	YES; RENOVATION DRAWINGS, FACILITIES MANAGEMENT, UM, ORONO (1935, 1978, 1980)
--------------------------------	---

### ENVIRONMENTAL DATA

36. SITE INTEGRITY:	ORIGINAL	QUADRANGLE #:	19
37. SETTING:	SMALL TOWN	40. UTM EASTING:	52592
38. QUADRANGLE MAP USED:	OLD TOWN		
39. UTM NORTHING:	497162		
41. FACADE DIRECTION:	WEST		

MHPC USE ONLY

DATE ENTERED IN INVENTORY: \_\_\_\_\_ PHOTO FILE #: \_\_\_\_\_

NR STATUS: L \_\_\_ HD \_\_\_ E \_\_\_ NE \_\_\_ ND \_\_\_ REVIEWER \_\_\_\_\_

DATA SOURCE: \_\_\_HPF\_\_\_CLG\_\_\_RC\_\_\_STAFF\_\_\_STATE SURVEY OTHER\_\_\_\_\_ LEVEL OF SURVEY: \_\_\_R\_\_\_I



MHPC USE ONLY

INVENTORY NO. .

**MAINE HISTORIC PRESERVATION COMMISSION**

**Historic Building/Structure Survey Form**

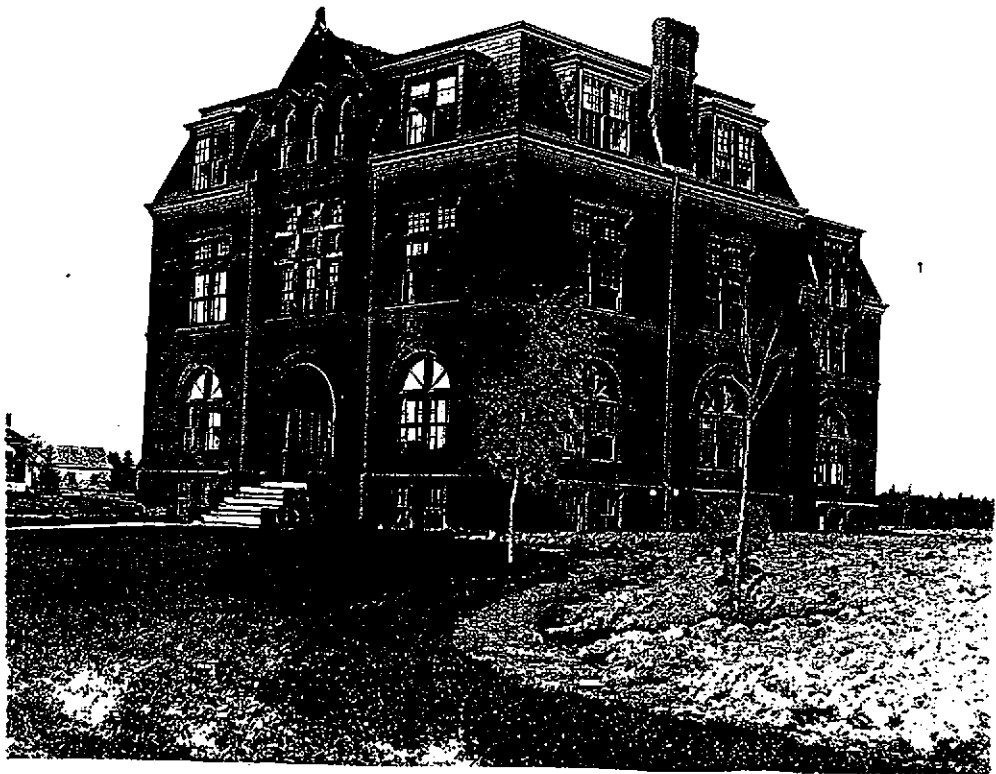
**Continuation Sheet**

PROPERTY NAME:

TOWN  COUNTY:

SURVEYOR:  DATE:

DATA FIELD # (FROM SURVEY FORM):



Coburn Hall. University of Maine, Fogler Library. University Collection, University Photos Archive, n.d.

SURVEY MAP NO. D02

SURVEY MAP NAME University of Maine, Orono

MHPC USE ONLY

INVENTORY NO.

## MAINE HISTORIC PRESERVATION COMMISSION

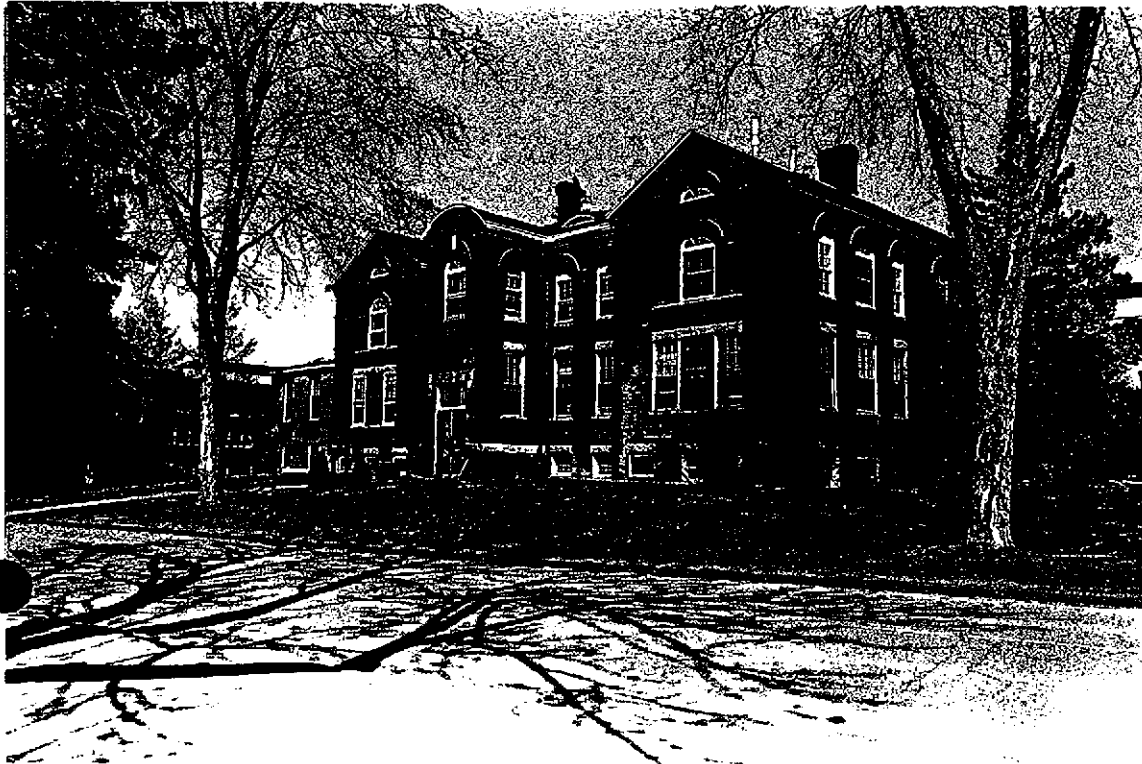
### Historic Building/Structure Survey Form

1. PROPERTY NAME (HISTORIC):	HOLMES HALL		
2. PROPERTY NAME (OTHER):	HOLMES HALL		
3. STREET ADDRESS:	OD 02		
4. TOWN:	ORONO	5. COUNTY:	PENOBSCOT
6. DATE RECORDED	5/10/02	7. SURVEYOR:	SARA K. MARTIN
8. OWNER NAME:	UNIVERSITY OF MAINE	ADDRESS:	ORONO, MAINE
9. PRIMARY USE (PRESENT):	EDUCATION		
10. CONDITION:	GOOD		

### ARCHITECTURAL DATA

11. PRIMARY STYLISTIC CATEGORY:	RICHARDSONIAN ROMANESQUE		
12. OTHER STYLISTIC CATEGORY:			
13. HEIGHT:	2 1/2 STORY		
14. PRIMARY FACADE WIDTH (MAIN BLOCK; USE GROUND FLOOR):	11 BAY		
15. APPENDAGES:	REAR ELL		

### PHOTOGRAPH



16. PORCH:	NONE
17. PLAN:	OTHER
18. PRIMARY STRUCTURAL SYSTEM:	BRICK
19. CHIMNEY PLACEMENT:	INTERIOR (4), INTERIOR END (1)
20. ROOF CONFIGURATION:	COMPOUND
21. ROOF MATERIAL:	SLATE
22. EXTERIOR WALL MATERIALS:	BRICK (GRANITE TRIM)
23. FOUNDATION MATERIAL:	GRANITE
24. OUTBUILDINGS/FEATURES:	LANDSCAPE/PLANT MATERIAL

### HISTORICAL DATA

25. DOCUMENTED DATE OF CONSTRUCTION:	
26. ESTIMATED DATE OF CONSTRUCTION:	1888
27. DATE MAJOR ADDITIONS/ALTERATIONS:	1899, 1904, 1955
28. ARCHITECT:	FRANK KIDDER
29. CONTRACTOR:	
30. ORIGINAL OWNER:	UNIVERSITY OF MAINE
31. SUBSEQUENT SIGNIFICANT OWNER:	NONE
32. CULTURAL/ETHNIC AFFILIATION:	
33. HISTORIC CONTEXT(S):	EDUCATION
34. COMMENTS/SOURCES:	

BUILT AS A RESULT OF THE HATCH ACT OF 1887 FOR WHICH PROVIDED FOR AGRICULTURAL EXPERIMENT STATIONS AT LAND-GRANT INSTITUTIONS. RENAMED IN 1904 FOR EZEKIEL HOLMES, EDITOR OF "THE MAINE FARMER," AND AN EARLY SUPPORTER OF A STATE AGRICULTURAL COLLEGE. WROUGHT-IRON BALCONY ABOVE MAIN (WEST) ENTRY. DECORATIVE BRICK WORK BETWEEN FIRST & SECOND STORY WINDOWS (CONTINUED IN 1955 ADDITION). "HOLMES HALL" & "EXPERIMENT STATION" ENGRAVED IN GRANITE ABOVE THE MAIN ENTRY. MASONRY WORK BY W. N. SAWYER, CARPENTRY BY J. L. GRANT, PAINTING BY THURSTON & MORGAN. 1899: SOUTH WING ADDED. 1904: NORTH WING ADDED; THE BUILDING WAS DEDICATED AT THIS TIME & NAMED HOLMES HALL. A PROJECTING ENTRY WAS ADDED LATER (DATE UNKNOWN). ORIGINAL STEPS INSIDE ENTRYWAY. 1955: ONE-STORY ADDITION TO NORTH SIDE OF HOLMES HALL. 1969-1972: SOME MINOR INTERIOR RENOVATION. PLANTER AT WEST SIDE OF BUILDING

35. HISTORICAL DRAWINGS EXIST:	YES, RENOVATION DRAWINGS AT FACILITIES MANAGEMENT AT UM, ORONO (1955, 1969-72)
--------------------------------	--

### ENVIRONMENTAL DATA

36. SITE INTEGRITY:	ORIGINAL	QUADRANGLE #:	19
37. SETTING:	SMALL TOWN	40. UTM EASTING:	52599
38. QUADRANGLE MAP USED:	OLD TOWN		
39. UTM NORTHING:	497160		
41. FACADE DIRECTION:	WEST		

#### MHPC USE ONLY

DATE ENTERED IN INVENTORY: \_\_\_\_\_ PHOTO FILE #: \_\_\_\_\_

NR STATUS: L \_\_\_ HD \_\_\_ E \_\_\_ NE \_\_\_ ND \_\_\_ REVIEWER \_\_\_\_\_

DATA SOURCE: \_\_\_HPF\_\_\_CLG\_\_\_RC\_\_\_STAFF\_\_\_STATE SURVEY OTHER\_\_\_ LEVEL OF SURVEY: \_\_\_R\_\_\_I

MHPC USE ONLY

INVENTORY NO.

**MAINE HISTORIC PRESERVATION COMMISSION**

**Historic Building/Structure Survey Form**

**Continuation Sheet**

PROPERTY NAME:

TOWN:  COUNTY:

SURVEYOR:  DATE:

DATA FIELD # (FROM SURVEY FORM):



"Experiment Station, early days." University of Maine, Fogler Library. University Collection, University Photos Archive, n.d.