

**HIGH FIDELITY
NURSING
SIMULATION LAB**

Architect of Record
Ellenzweig 230 Congress Street
Boston MA 02110
T 617 491-5575
F 617 868-2318

MEP | FA | FP
Allied Engineering 106 Veranda Street
Portland, ME, 04103
T 207 221-2260
F 207 221-2266

Audio-Visual
Cavanaugh Tocci 327 F Boston Post Road
Sudbury, MA, 01776
T 978 443-7871

Notes:

AV SHEET LIST	
Sheet Number	Sheet Name
AV000	AUDIOVISUAL NOTES AND SCHEDULES
AV400	AUDIOVISUAL PLANS - LEVEL FOUR
AV401	AUDIOVISUAL SYSTEMS - ELEVATIONS AND SECTIONS

AV PLAN NOTES

NOTE 1 - GENERAL

- A. MOUNT ALL DEVICES AS RECOMMENDED BY THE MANUFACTURER. PROVIDE ALL REQUIRED MOUNTING HARDWARE, AND SECURE TO BLOCKING BY OTHERS. PAINT HARDWARE TO MATCH WALL OR CEILING.
- B. FOR ALL DEVICES EXPOSED TO VIEW, PAINT OR PROVIDE FACTORY FINISHES AS DIRECTED.
- C. MOUNT ALL DEVICES AT HEIGHT AND LOCATION DIRECTED. COORDINATE WITH OTHER TRADES.
- E. FOR ALL DEVICES MOUNTED ABOVE CEILINGS, COORDINATE LOCATIONS TO AVOID CONFLICT WITH OTHER DEVICES AND SYSTEMS.
- F. COORDINATE THE SEQUENCE OF THE WORK WITH THE CONSTRUCTION MANAGER AND WITH OTHER TRADES AT THE JOBSITE.

NOTE 2 - WALL MOUNTED DEVICES

- A. IF NOT PROVIDED WITH INTEGRAL POST-CONSTRUCTION WALL MOUNT ENCLOSURE, MOUNT WITHIN JUNCTION BOX OR PLASTER RING AS PROVIDED BY OTHERS. COORDINATE WITH OTHER TRADES.
- B. INSTALL AT HEIGHT AND LOCATION DIRECTED. COORDINATE WITH OTHER SERVICES WHICH MAY ALREADY BE IN PLACE.

NOTE 3 - CONNECTION PANELS

- A. WHERE SHOWN AT WALL, MOUNT WITHIN JUNCTION BOX OR PLASTER RING AS PROVIDED BY OTHERS. COORDINATE WITH OTHER TRADES.

NOTE 4 - FLOOR BOXES

- A. COORDINATE WITH FLOOR BOX SUPPLIER SO THAT BOX IS SUPPLIED WITH BLANK FACEPLATE OF SUFFICIENT SIZE TO ACCEPT AUDIO-VISUAL CONNECTIONS AS SHOWN ON FUNCTIONAL DIAGRAMS.
- B. 120V POWER SERVICES BY OTHERS. VOICE AND DATA COMMUNICATIONS SERVICES BY OTHERS.
- C. DO NOT ALLOW ANY AUDIO-VISUAL CABLING TO SHARE WIRING COMPARTMENT IN USE BY OTHER SERVICES. COORDINATE WITH OTHER TRADES.

NOTE 5 - EQUIPMENT RACKS

- A. FIELD VERIFY PROPER FIT INTO LOCATION SHOWN BEFORE ORDERING RACK. COORDINATE WITH OTHER TRADES.
- B. DO NOT ENERGIZE UNTIL PROPER VENTILATION IS CONFIRMED.

NOTE 6 - PLAYBACK EQUIPMENT CABINETS OR INSTRUCTOR'S STATIONS

- A. LOCATE WITHIN CREDENZA OR BASE CABINET BY OTHERS. FIELD VERIFY PROPER FIT BEFORE ORDERING. COORDINATE WITH MILLWORKER OR FURNITURE SUPPLIER.
- B. DO NOT ENERGIZE UNTIL PROPER VENTILATION IS CONFIRMED.

NOTE 7 - TABLE TOP SERVICES MODULES

- A. COORDINATE WITH FURNITURE SUPPLIER SO THAT TABLE TOP SERVICES MODULE IS SUPPLIED WITH BLANK FACEPLATE OF SUFFICIENT SIZE TO ACCEPT AUDIO-VISUAL CONNECTIONS AS SHOWN ON FUNCTIONAL DIAGRAMS.
- B. WHERE SPECIFIED AS FURNISHED BY AUDIO-VISUAL CONTRACTOR, DELIVER TO OTHER TRADES FOR INSTALLATION BY OTHERS.
- C. 120V POWER SERVICES BY OTHERS. VOICE AND DATA COMMUNICATIONS SERVICES BY OTHERS.
- D. MOUNT POWER SUPPLIES, INTERFACES, AND OTHER ACCESSORY ITEMS CONCEALED BENEATH TABLE TOP OR WITHIN TABLE BASE. PROVIDE WIRE MANAGEMENT AS REQUIRED. EMPLOYING SCREW-ATTACHED (NOT ADHESIVE-BACKED) FASTENERS. DRESS ALL CABLING SO THAT NO CABLING IS VISIBLE BENEATH TABLE TOP.

NOTE 8 - DOCKING STATIONS FOR WIRELESS DEVICES

- A. LOCATE DOCKING STATION WHERE DIRECTED. COORDINATE WITH FURNITURE OR CASEWORK SUPPLIER TO ENSURE ACCESS TO NECESSARY 120V POWER AND/OR DATA COMMUNICATIONS SERVICES.

NOTE 9 - CAMERAS

- A. MOUNT CAMERA TO WALL OR CEILING EMPLOYING SPECIFIED MOUNT. PAINT MOUNT AND ALL HARDWARE TO MATCH WALL OR AS DIRECTED.
- B. WHERE VIDEO CONFERENCE CAMERA IS LOCATED AT FLAT PANEL DISPLAY, INSTALL CAMERA ON SHELF ABOVE OR BELOW FLAT PANEL AS DIRECTED, WITH MINIMAL SEPARATION BETWEEN CAMERA AND FLAT PANEL.

NOTE 10 - FIXED TABLE MICROPHONES

- A. MOUNT SECURELY ON TOP OF WORK SURFACE, AND RUN CABLE HORIZONTALLY BENEATH WORK SURFACE. PROVIDE ALL REQUIRED CABLE MANAGEMENT TO THE EXTENT NOT PROVIDED BY OTHERS. SECURE CABLES WITH SCREW ATTACHED (NOT ADHESIVE) FASTENERS.
- B. COORDINATE WITH FURNITURE SUPPLIER SO THAT REQUIRED TABLE CUTOUT IS PROVIDED BY FURNITURE SUPPLIER.
- C. EMPLOY RIGHT-ANGLE CONNECTORS ON ANY THROUGH-TABLE MICROPHONES, AND TAKE OTHER MEASURES TO MINIMIZE EXTENT TO WHICH CABLING AND HARDWARE WILL BE VISIBLE BENEATH THE TABLE.

NOTE 11 - CEILING LOUDSPEAKERS

- A. INSTALL IN CEILING AS INDICATED ON ARCHITECTURAL REFLECTED CEILING PLAN. COORDINATE WITH OTHER CEILING-MOUNTED ELEMENTS.
- B. WHERE SHOWN IN ACOUSTICAL CEILING TILE, INSTALL WITH TILE BRIDGE OR OTHER MEANS TO PREVENT CEILING SAG. PROVIDE ALL REQUIRED MOUNTING HARDWARE AND ACCESSORIES.
- C. WHERE LOUDSPEAKER ENCLOSURES ARE PROVIDED BY OTHERS, PROVIDE LOUDSPEAKER AND BAFFLE AS REQUIRED TO ACHIEVE COMPLETE ASSEMBLY.
- D. PAINT OR PROVIDE FACTORY FINISH AS SELECTED BY ARCHITECT.

NOTE 12 - MONITORS AND TELEVISIONS

- A. MOUNT FLAT PANEL DISPLAYS TO WALL OR CEILING USING SPECIFIED MOUNTS. ALIGN TO BE PLUMB AND LEVEL, AND TIGHTEN ADJUSTING HARDWARE. COORDINATE LOCATION OF ELECTRICAL AND LOW VOLTAGE SERVICES WITH OTHER TRADES. CONCEAL ALL CABLES.
- B. PROVIDE SHIMS OR BLOCKING AS REQUIRED SO THAT FACE OF DISPLAY IS FLUSH WITH SURROUNDING FINISHED WALL.
- C. FIELD VERIFY ADEQUATE BLOCKING AND ADEQUATE VENTILATION BEFORE BEGINNING INSTALLATION.
- D. COORDINATE LOCATION OF ELECTRICAL AND LOW-VOLTAGE SERVICES WITH MONITOR MOUNTING HARDWARE. WHERE REQUIRED, PROVIDE 120V LINE CORDS WITH RIGHT ANGLE PLUGS.
- E. LOCATE DISPLAY DRIVERS AND ACCESSORY DEVICES CONCEALED BEHIND DISPLAY EMPLOYING LOW-PROFILE MOUNTING HARDWARE AND RIGHT-ANGLE CONNECTORS. WHERE RECESSED JUNCTION BOX IS EMPLOYED, LOCATE DISPLAY DRIVERS AND ACCESSORY DEVICES CONCEALED WITHIN JUNCTION BOX.

NOTE 13 - PROJECTORS

- A. MOUNT PROJECTOR TO ABOVE-CEILING STRUCTURAL SUPPORT FRAMEWORK OR TO CEILING-MOUNTED EQUIPMENT ENCLOSURE, FRAMEWORK OR ENCLOSURE AS PROVIDED BY OTHERS. COORDINATE LOCATION OF STRUCTURAL SUPPORTS AS REQUIRED TO ACHIEVE SPECIFIED PROJECTION GEOMETRY.
- B. PROVIDE ALL MOUNTING BRACKETS AND OTHER REQUIRED HARDWARE. PAINT ALL VISIBLE HARDWARE WHITE OR AS DIRECTED. CONCEAL ALL CABLING.
- C. WHERE USED WITH PROJECTION SCREEN, POSITION PROJECTOR AS REQUIRED TO FILL HEIGHT AND WIDTH OF SCREEN, WITH BOTTOM OF IMAGE AT 42" ABOVE FLOOR OR AS DIRECTED. POSITION WITHIN CENTER 50% OF LENS RANGE. LOCATE FOR CORRECT IMAGE GEOMETRY UNDER ALL CONDITIONS, WITH PROPER ASPECT RATIO, FREE OF KEYSTONE AND OTHER GEOMETRY ERROR. DO NOT EMPLOY ELECTRONIC KEYSTONE CORRECTION.

NOTE 14 - ELECTRIC PROJECTION SCREENS

- A. ELECTRIC PROJECTION SCREEN, LOW VOLTAGE MOTOR CONTROLLER, AND LOW VOLTAGE CONTROL SWITCH ALL BY OTHERS. FIELD VERIFY SCREEN SIZE AND DROP. PROVIDE LOW VOLTAGE CONTROL CONNECTION TO AUDIO-VISUAL CONTROL SYSTEM AS SHOWN ON DRAWINGS.
- B. ADJUST PROJECTION SCREEN LIMIT SWITCH AS NECESSARY TO ACHIEVE REQUIRED PROJECTION GEOMETRY.

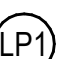
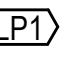
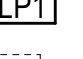
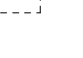
NOTE 15 - PROJECTOR ELEVATORS

- A. DELIVER ELEVATOR TO GENERAL CONTRACTOR FOR INSTALLATION BY OTHER TRADES. COORDINATE AS REQUIRED.

NOTE 16 - OWNER'S CABLING STANDARDS

- A. EMPLOY PLENUM-RATED CABLE FOR ALL CABLE INSTALLED ABOVE THE CEILING, WHETHER PLENUM SPACES OR NOT.

AV SYMBOL KEY

-  CEILING-MOUNTED DEVICE
-  WALL-MOUNTED DEVICE
-  FLOOR-MOUNTED DEVICE
-  EQUIPMENT RACK WITHIN CREDENZA

AUDIOVISUAL DEVICE LEGEND		
DEVICE	PURPOSE OR EQUIPMENT SERVED	NOTES
CA1	PAN/TILT/ZOOM CAMERA, CEILING MOUNTED	
CA2	FIXED VIEW CAMERA, WALL MOUNTED	
CM	CEILING MICROPHONE OR MICROPHONE ARRAY	
E3	CONNECTION TO PLAYBACK EQUIPMENT	
FB1	FLOOR POKETHROUGH	
FC	FIXED VIEW CAMERA, CEILING MOUNTED	
FP	FLAT PANEL LARGE	
FS	FLAT PANEL SMALL	
HTH	PORTABLE TELE-HEALTH SYSTEM	
M1	WALL MOUNTED MICROPHONE	
S1	CEILING LOUDSPEAKER	
TP	WALL TELEPHONE WITH AUDIO TAP	
TPM	TOUCH SCREEN CONTROL PANEL	

Keyplan

Job Number 31905
Drawing By JMM
Checked By NB
Date 10.18.2019

Revisions		
No.	Date	Description

AUDIOVISUAL NOTES AND SCHEDULES

SD / 50% DD
Scale: 12" = 1'-0"

AV000

**HIGH FIDELITY
NURSING
SIMULATION LAB**

Architect of Record
Ellenzweig 230 Congress Street
Boston MA 02110
T 617 491-5575
F 617 868-2318

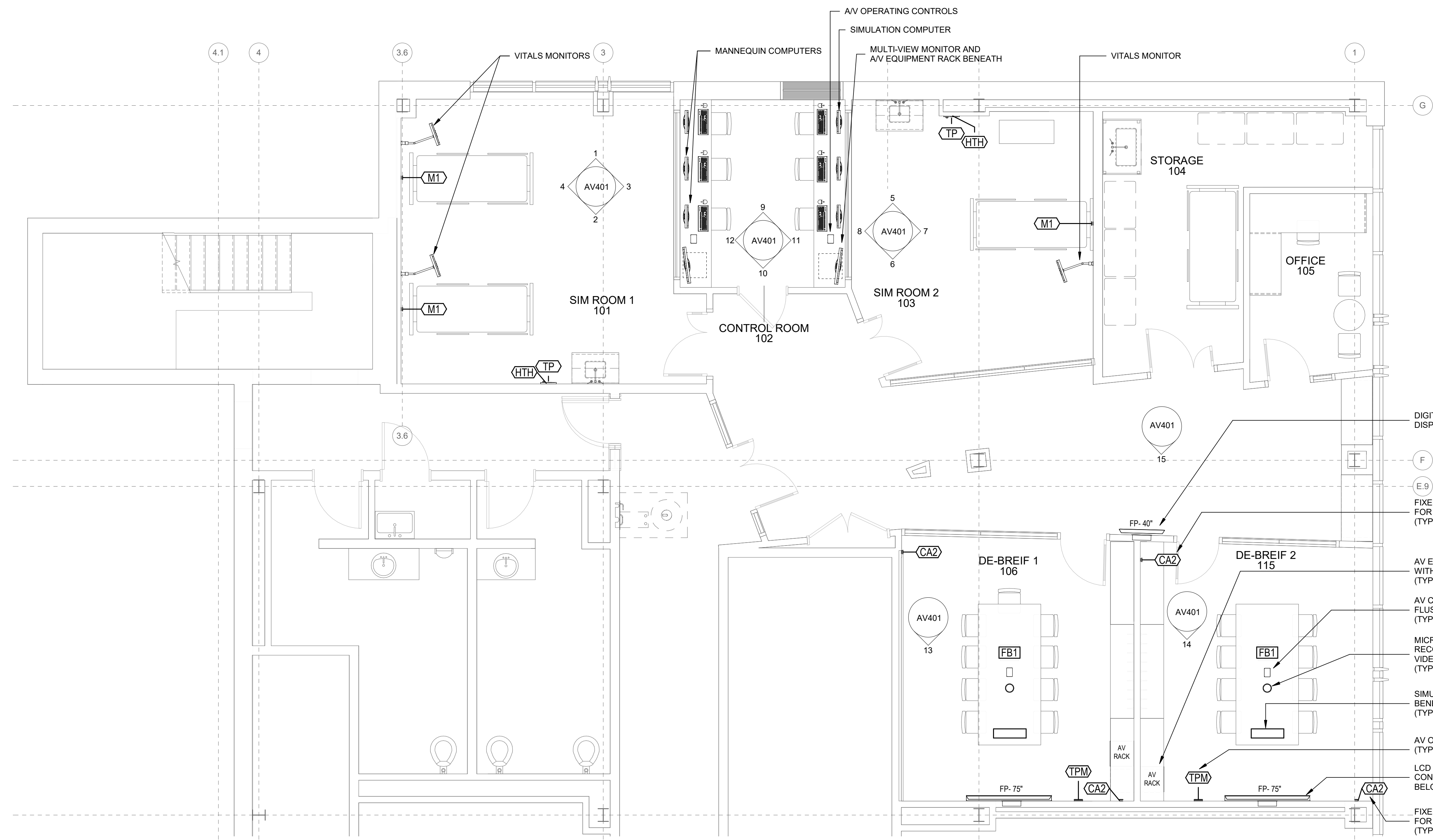
MEP | FA | FP
Allied Engineering 106 Veranda Street
Portland, ME, 04103
T 207 221-2260
F 207 221-2266

Audio-Visual
Cavanaugh Tocci 327 F Boston Post Road
Sudbury, MA, 01776
T 978 443-7871

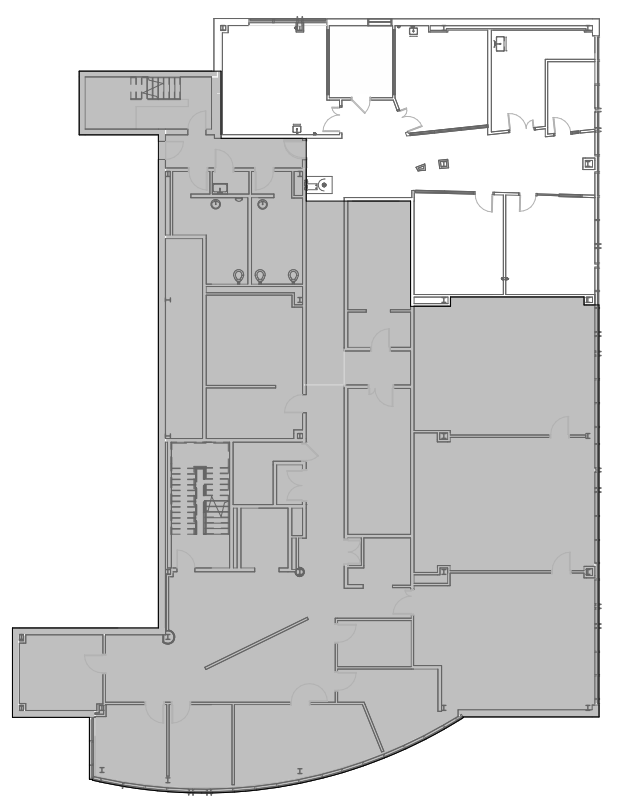
Notes:



3 AUDIOVISUAL REFLECTING CEILING PLAN - LEVEL 04
1/4" = 1'-0"



1 AUDIOVISUAL PLAN - LEVEL 4
1/4" = 1'-0"



Keyplan

Job Number 31905
Drawing By JMM
Checked By NB
Date 10.18.2019

Revisions

No.	Date	Description

**AUDIOVISUAL PLANS -
LEVEL FOUR**

SD / 50% DD
Scale: As indicated

AV400

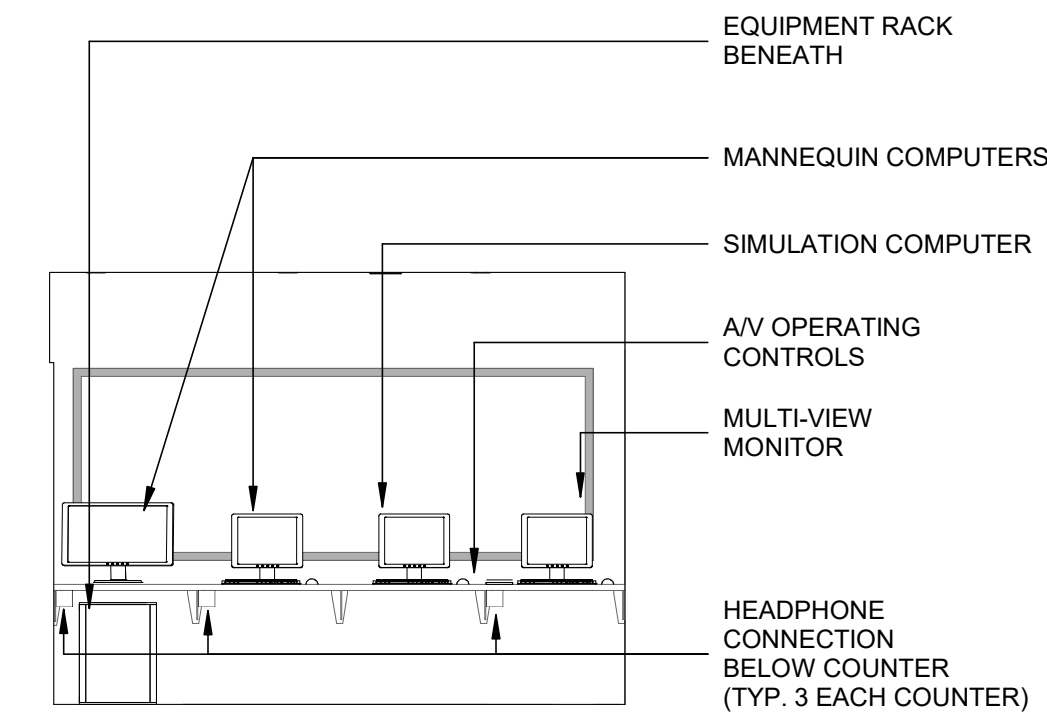
HIGH FIDELITY
NURSING
SIMULATION LAB

Architect of Record
Ellenzweig 230 Congress Street
Boston MA 02110
T 617 491-5575
F 617 868-2318

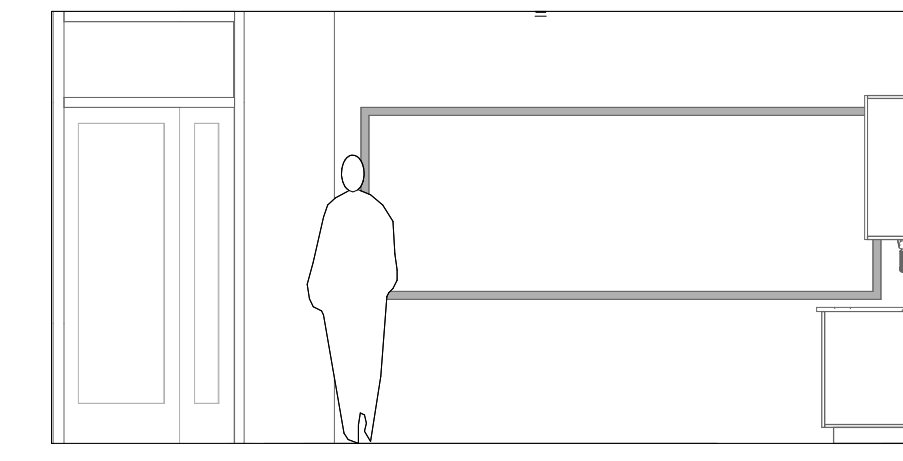
MEP | FA | FP
Allied Engineering 106 Veranda Street
Portland, ME, 04103
T 207 221-2260
F 207 221-2266

Audio-Visual
Cavanaugh Tocci 327 F Boston Post Road
Sudbury, MA, 01776
T 978 443-7871

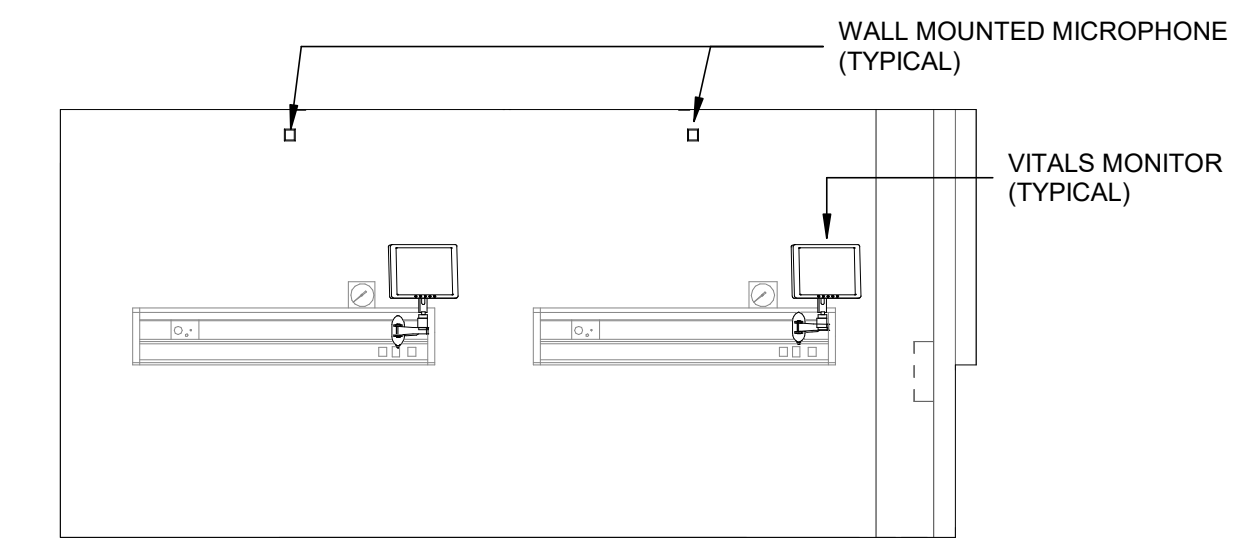
Notes:



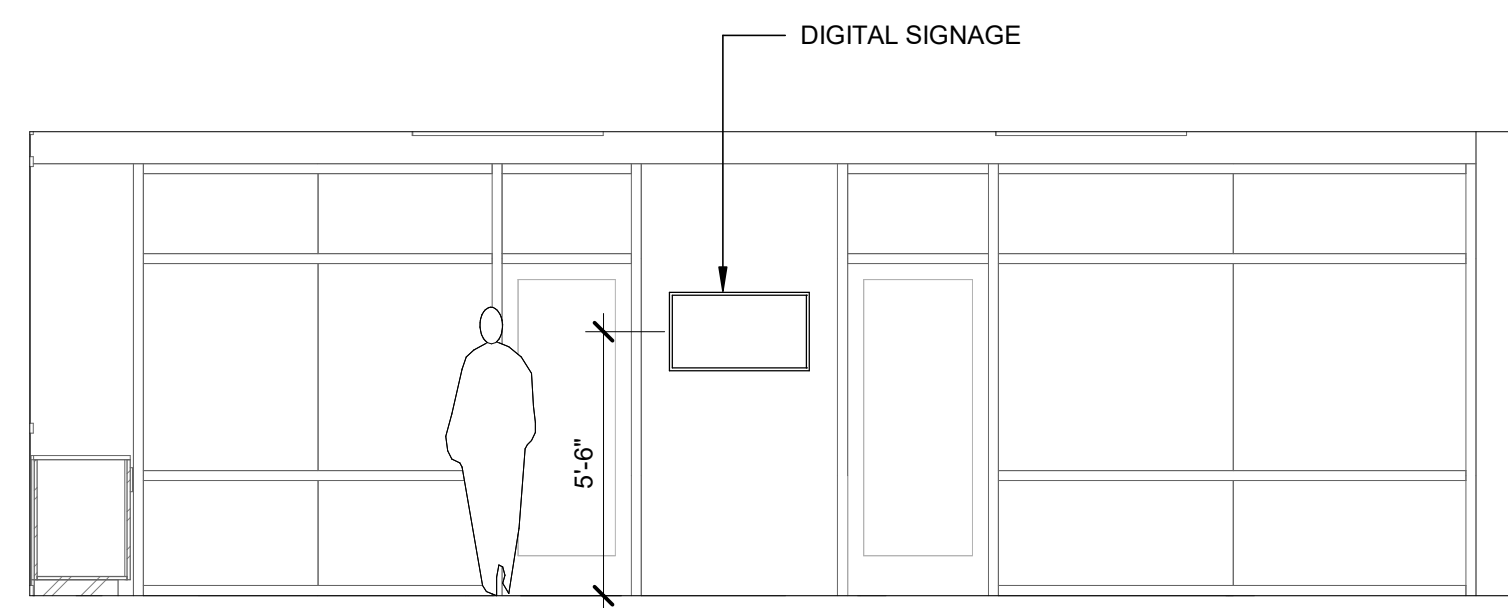
12 WEST ELEVATION - CONTROL ROOM
1/4" = 1'-0"



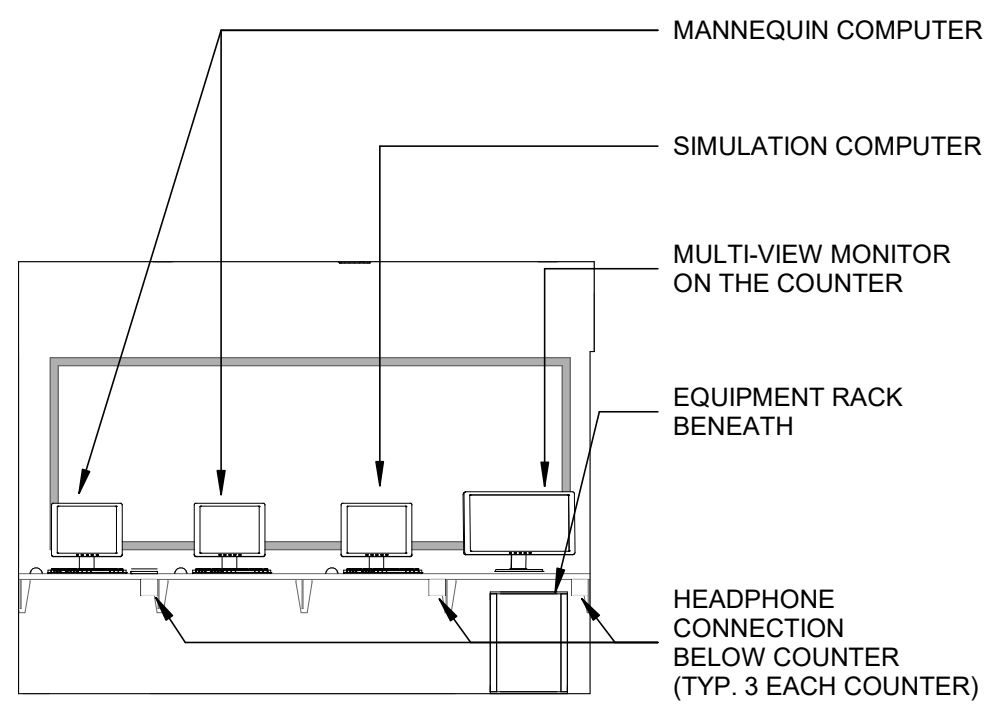
8 WEST ELEVATION - SIM ROOM 2
1/4" = 1'-0"



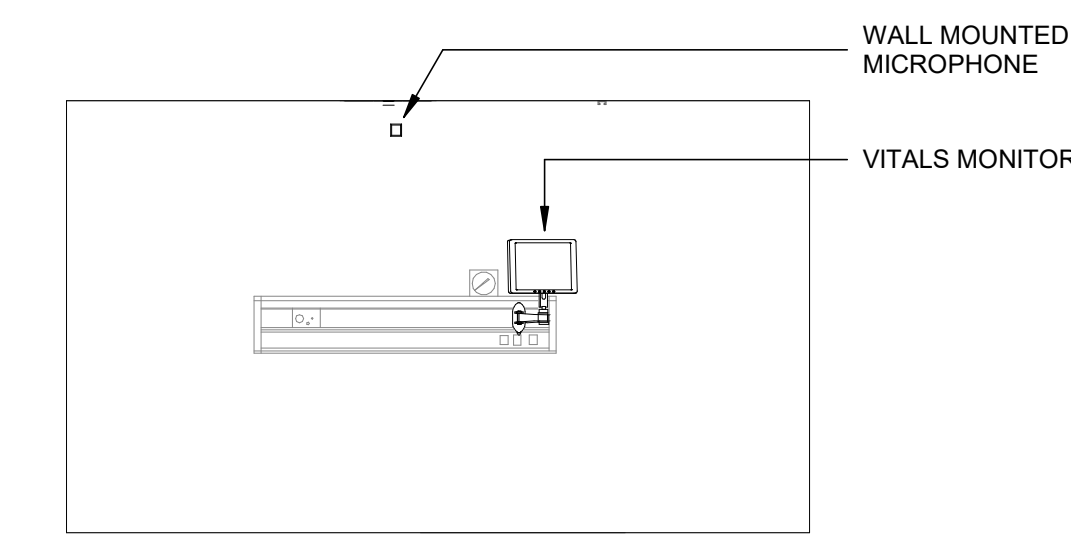
4 WEST ELEVATION - SIM ROOM 1
1/4" = 1'-0"



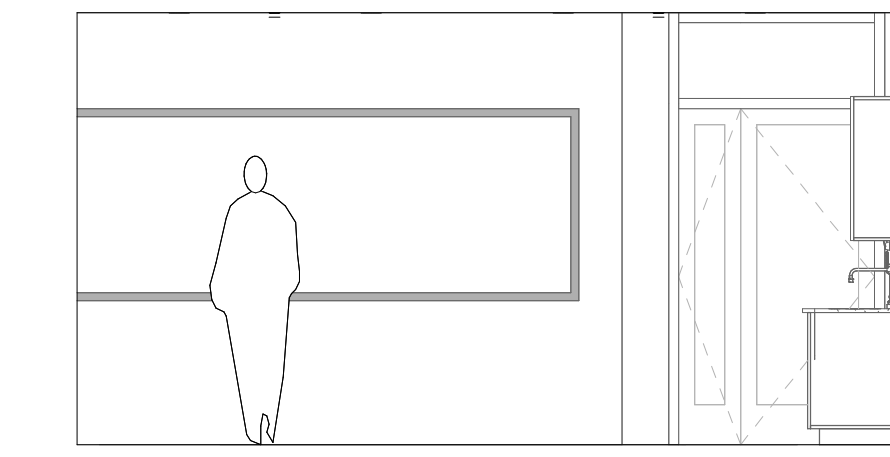
15 SOUTH ELEVATION - DIGITAL SIGNAGE
1/4" = 1'-0"



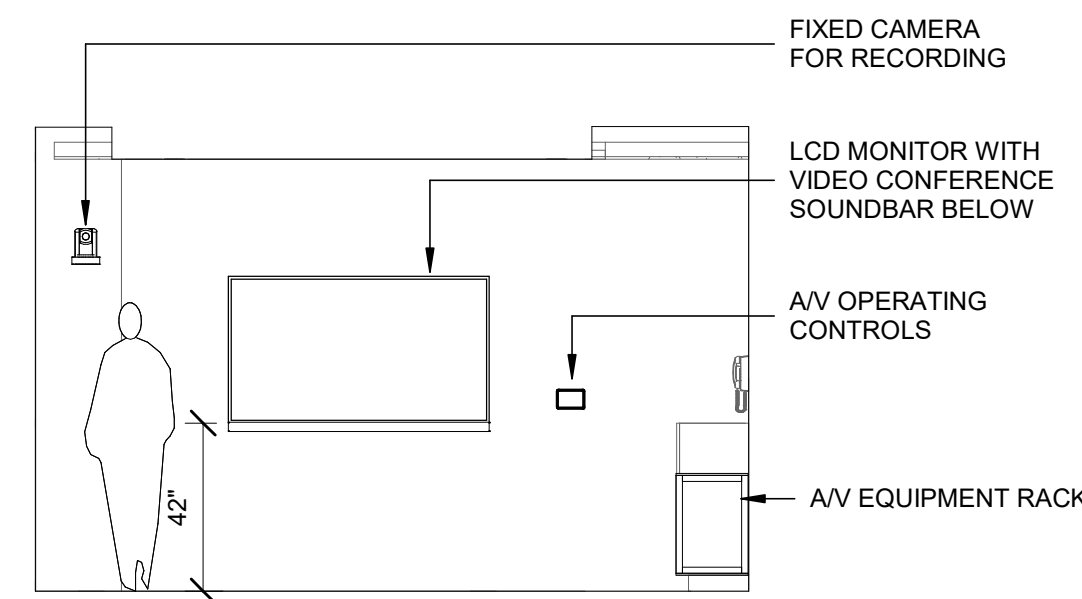
11 EAST ELEVATION - CONTROL ROOM
1/4" = 1'-0"



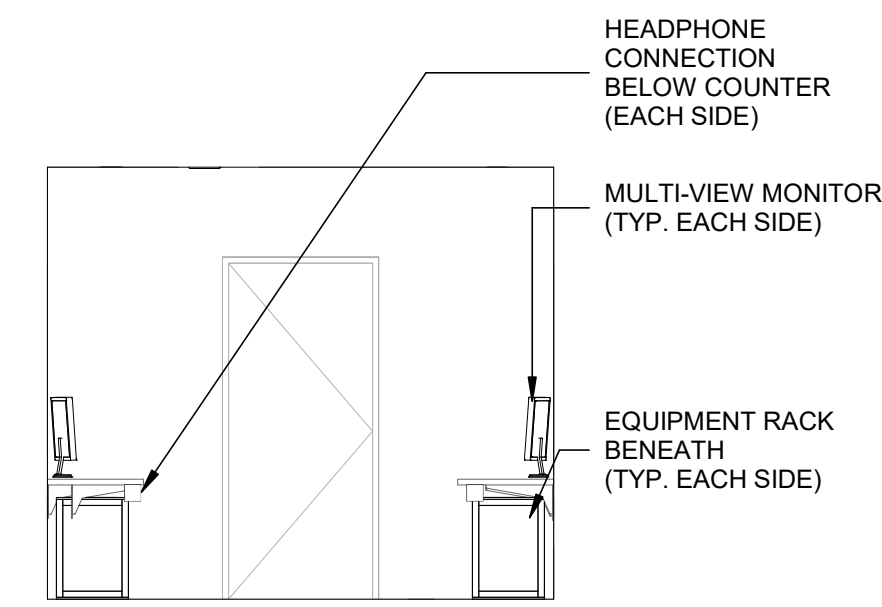
7 EAST ELEVATION - SIM ROOM 2
1/4" = 1'-0"



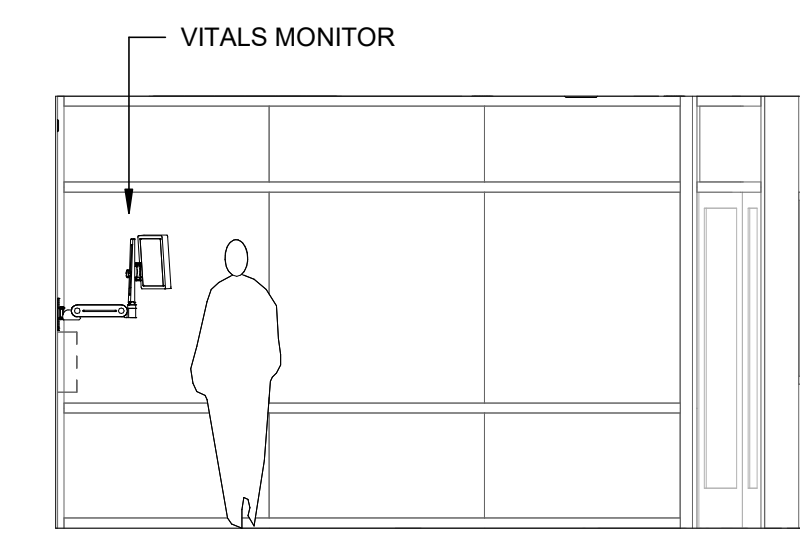
3 EAST ELEVATION - SIM ROOM 1
1/4" = 1'-0"



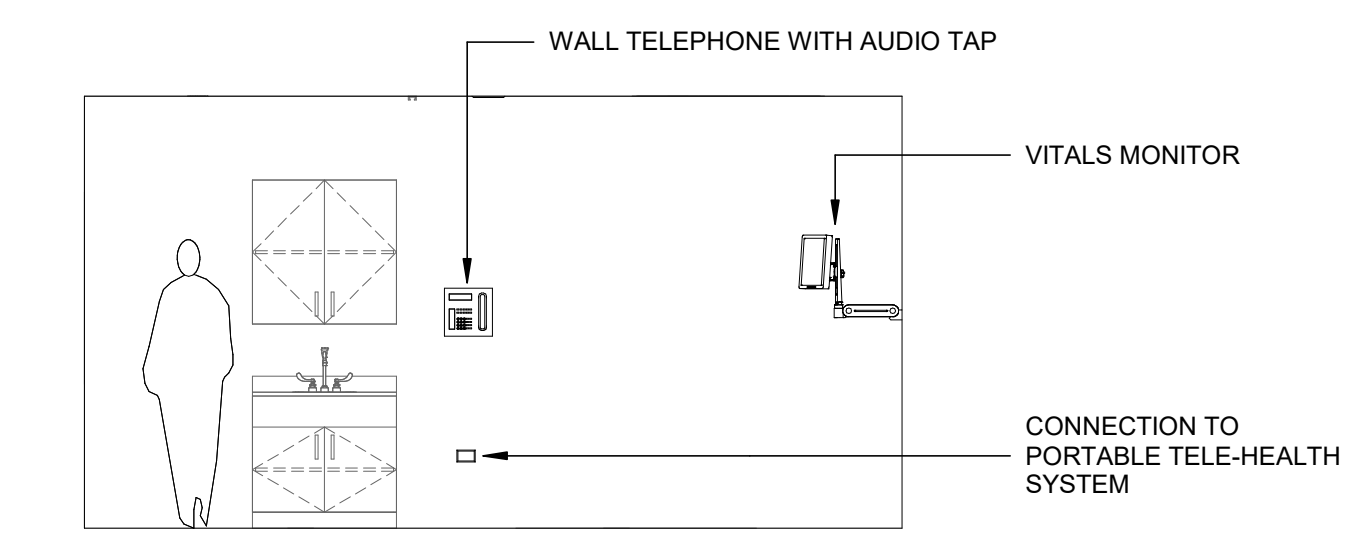
14 SOUTH ELEVATION - DE-BRIEF ROOM 115
1/4" = 1'-0"



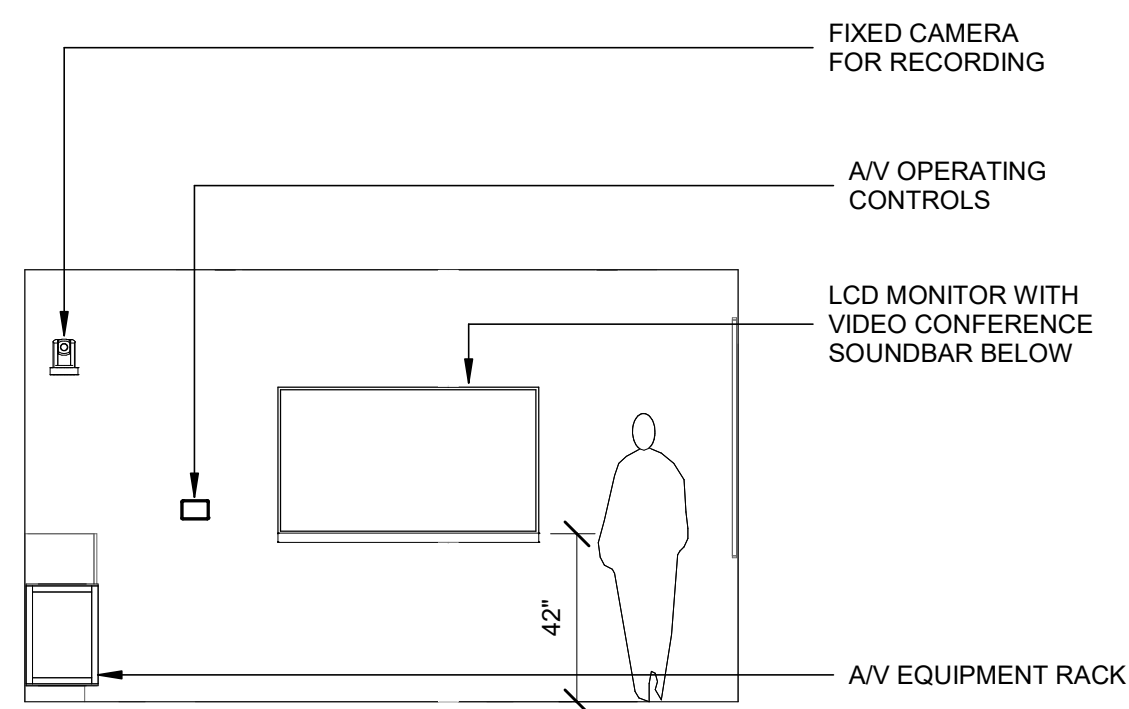
10 SOUTH ELEVATION - CONTROL ROOM
1/4" = 1'-0"



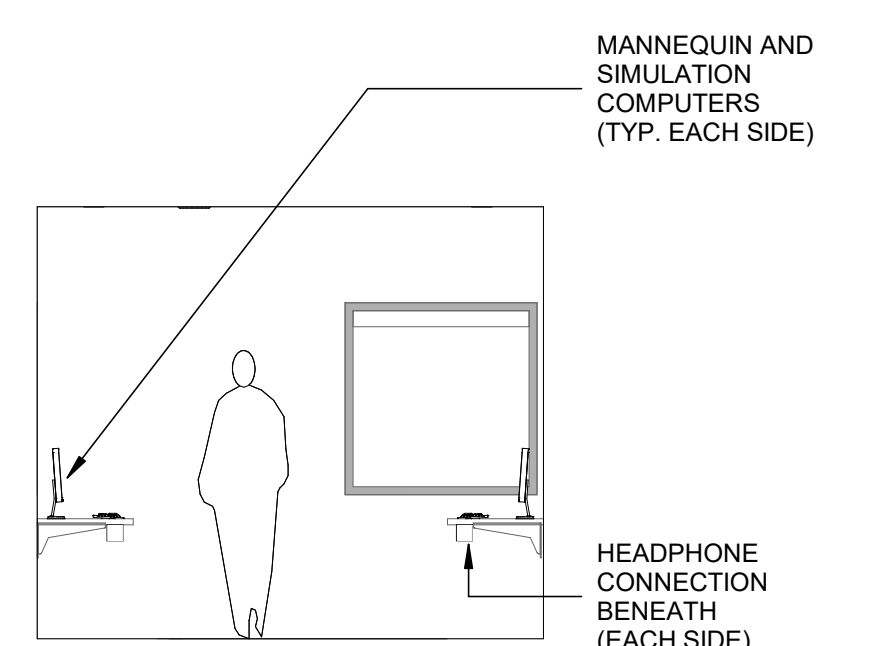
6 SOUTH ELEVATION - SIM ROOM 2
1/4" = 1'-0"



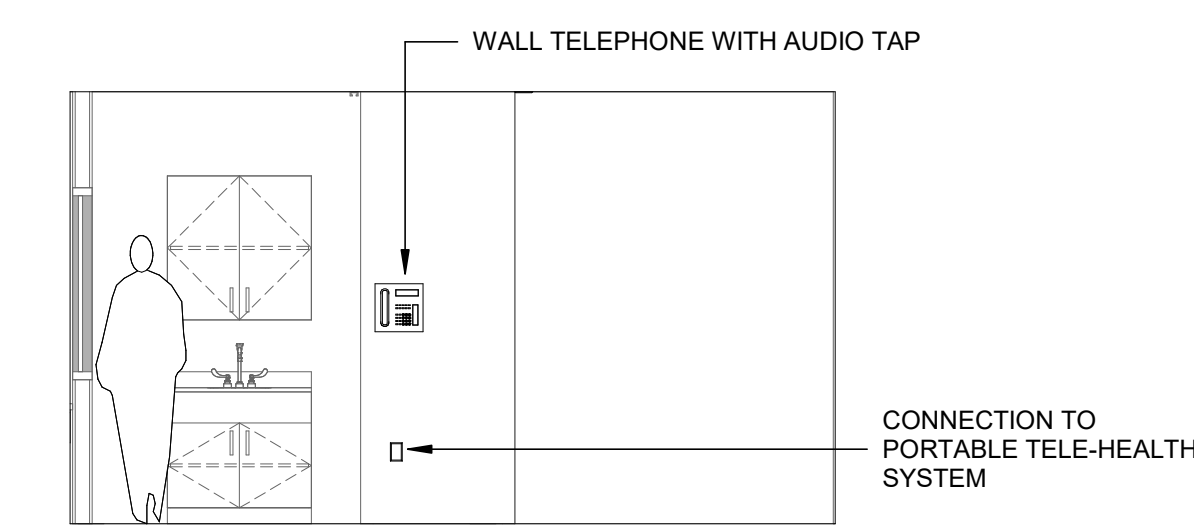
2 SOUTH ELEVATION - SIM ROOM 1
1/4" = 1'-0"



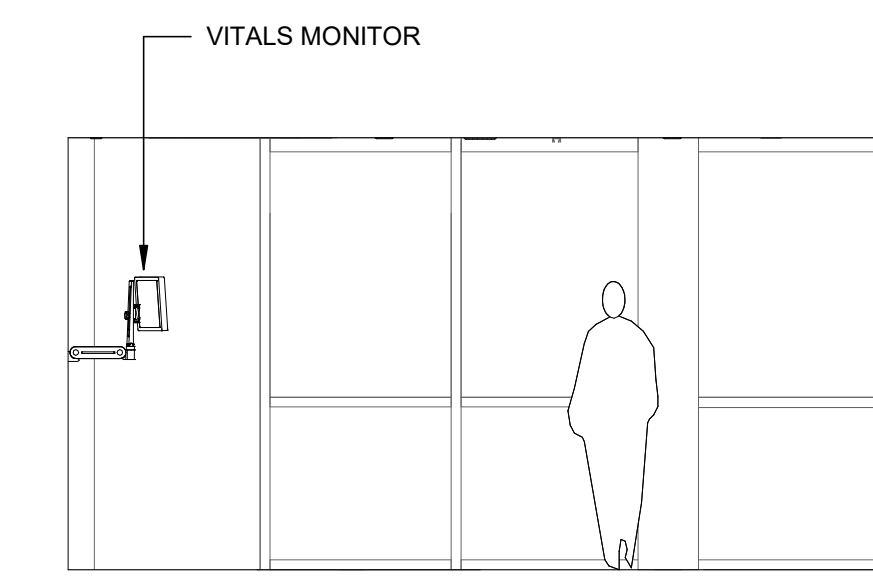
13 SOUTH ELEVATION - DE-BRIEF ROOM 106
1/4" = 1'-0"



9 NORTH ELEVATION - CONTROL ROOM
1/4" = 1'-0"



5 NORTH ELEVATION - SIM ROOM 2
1/4" = 1'-0"



1 NORTH ELEVATION - SIM ROOM 1
1/4" = 1'-0"

Keyplan

Job Number 31905
Drawing By JMM
Checked By NB
Date 10.18.2019

Revisions

No.	Date	Description

AUDIOVISUAL SYSTEMS -
ELEVATIONS AND
SECTIONS

SD / 50% DD
Scale: 1/4" = 1'-0"

AV401