

REQUEST FOR PROPOSAL #2020-011

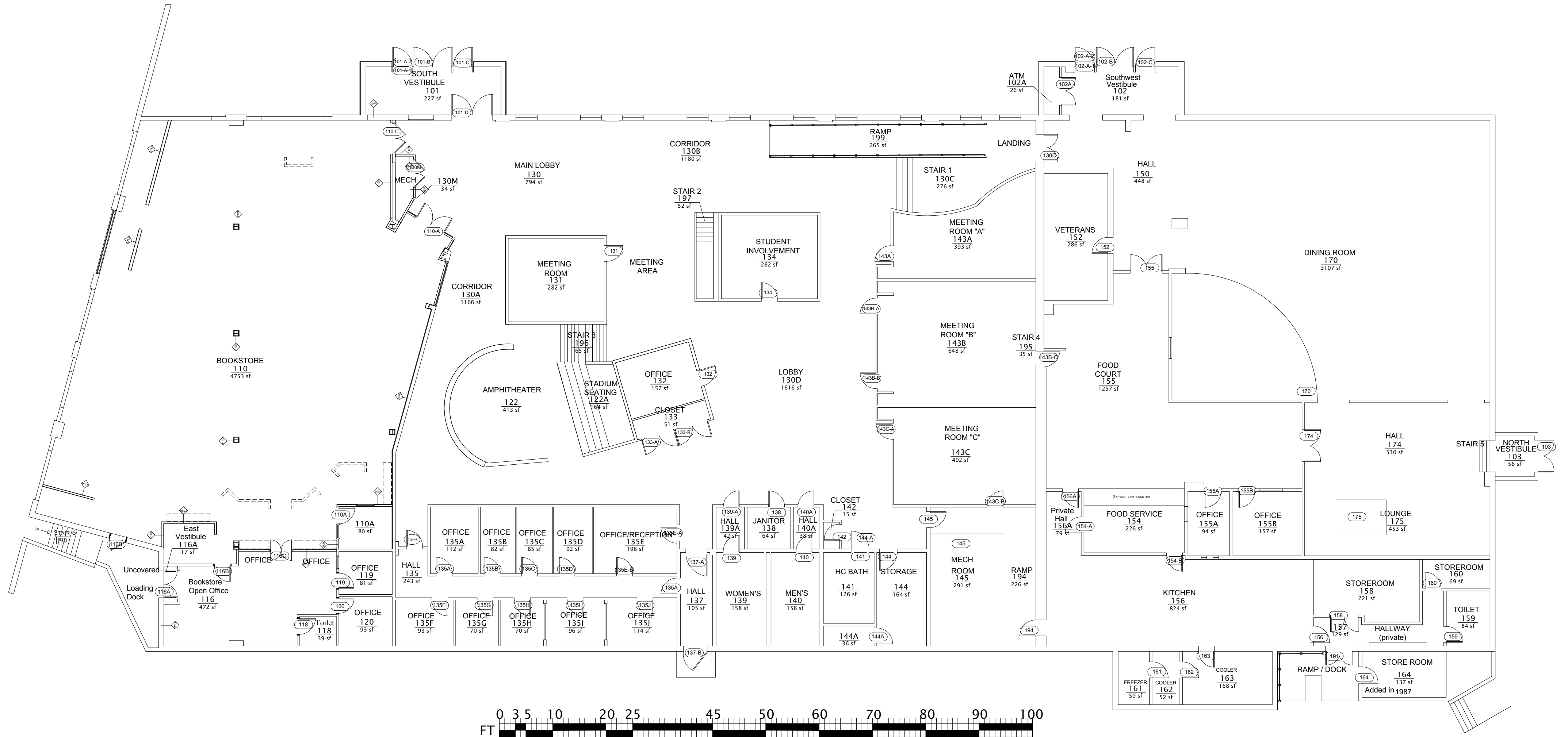
**University of Southern Maine (USM) Public-Private Partnership
for Portland Campus Student Housing & Student Center**

RESPONSE ADDENDUM #11

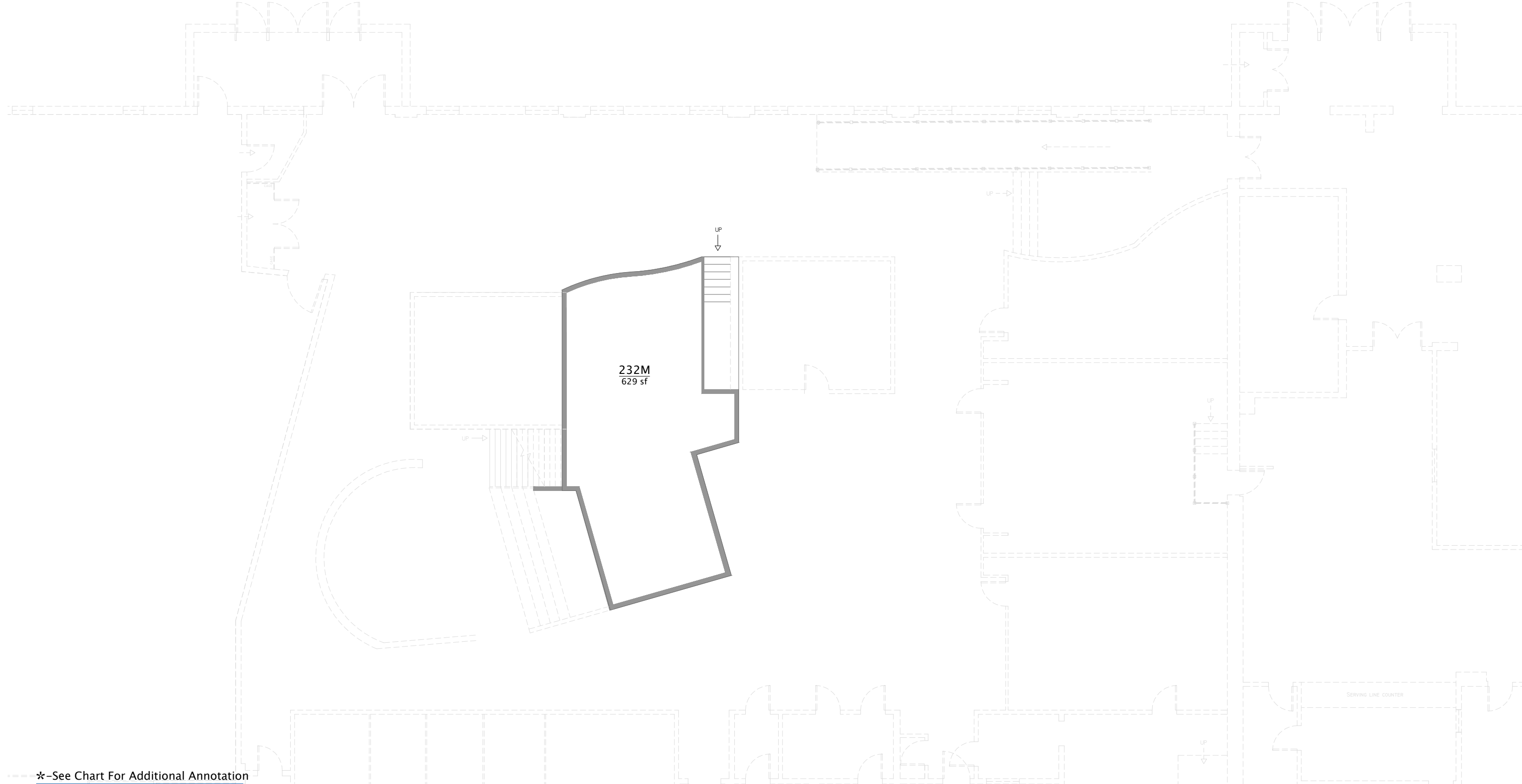
DATE: September 04, 2019

Floor plans for Current Buildings identified for demolition:

- Woodbury Campus Center
- 25 Bedford Facilities Building



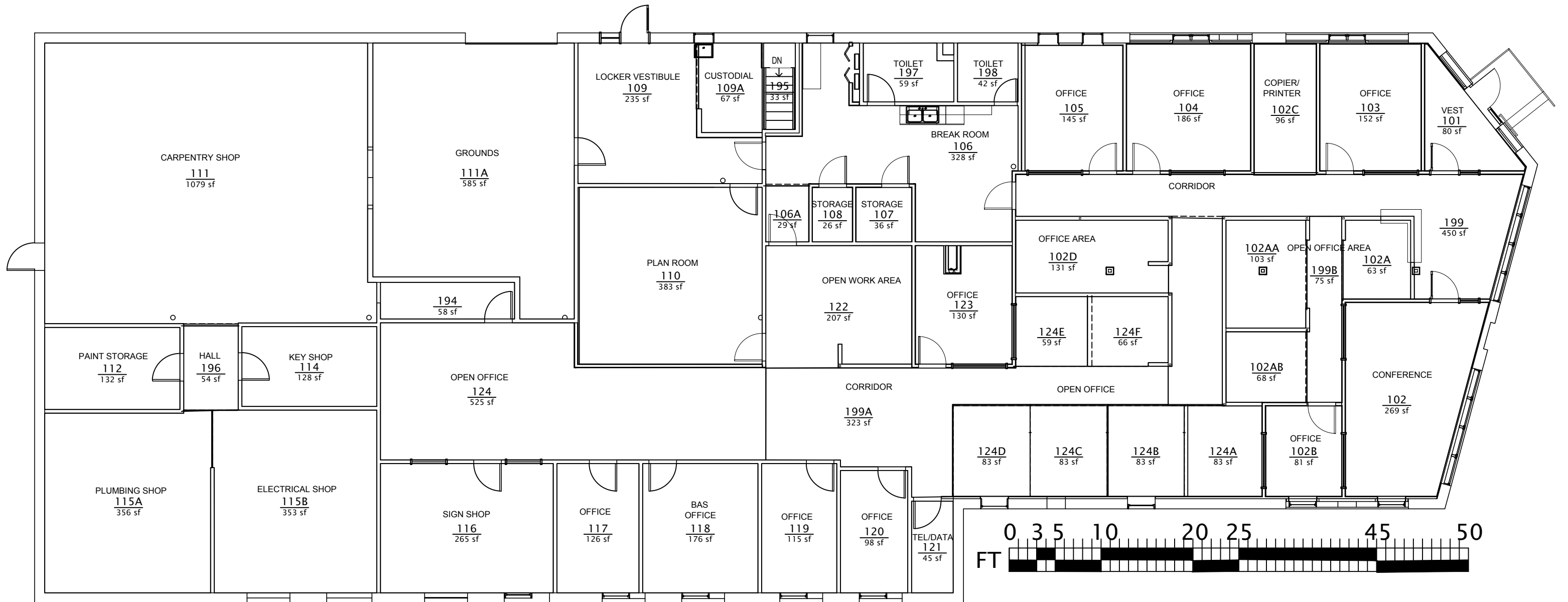
*-See Chart For Additional Annotation



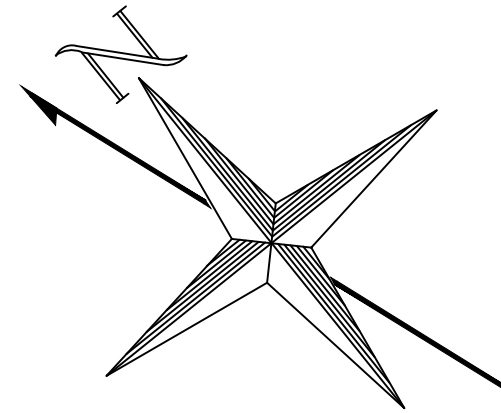
232M
629 sf

SERVING LINE COUNTER

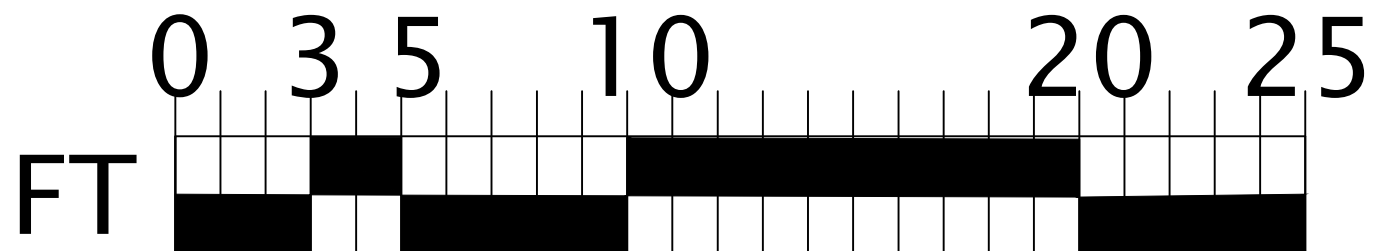
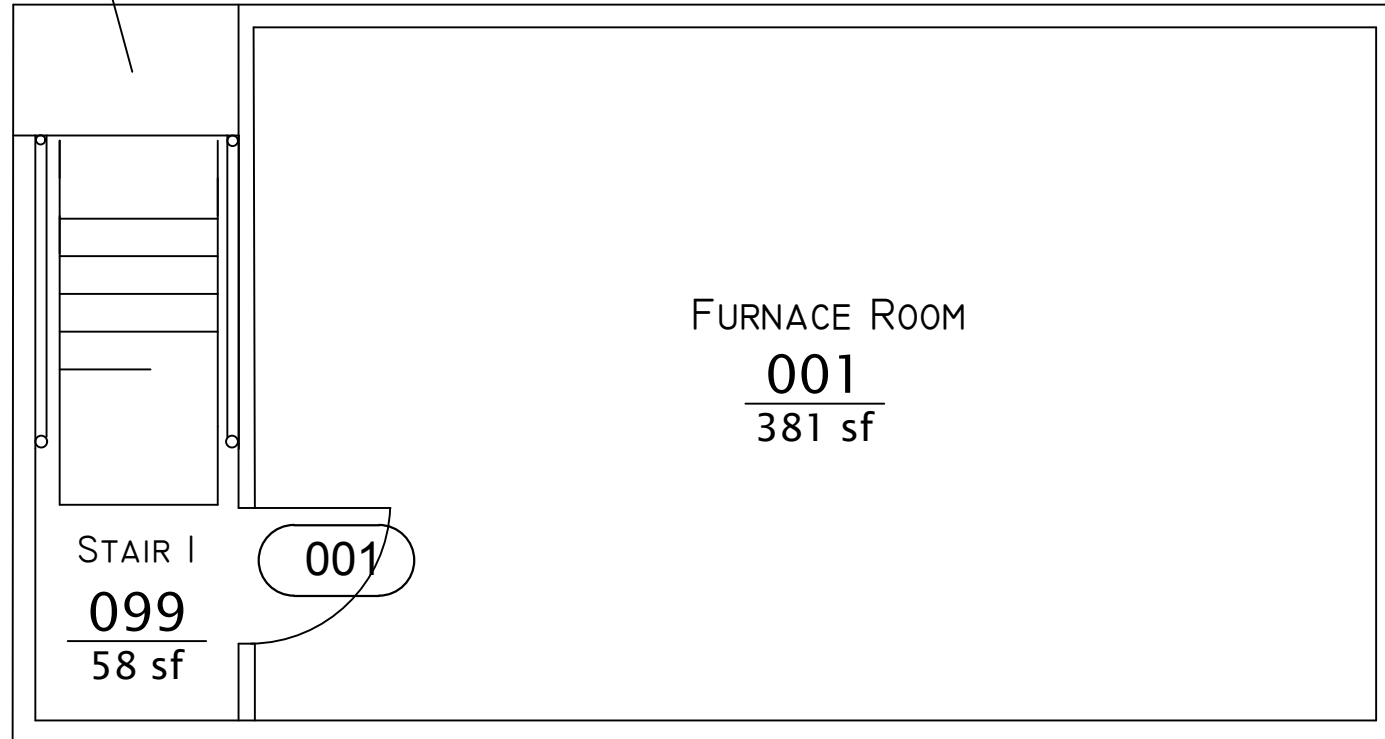
*-See Chart For Additional Annotation



*-See Chart For Additional Annotation



002
7 sf



*-See Chart For Additional Annotation