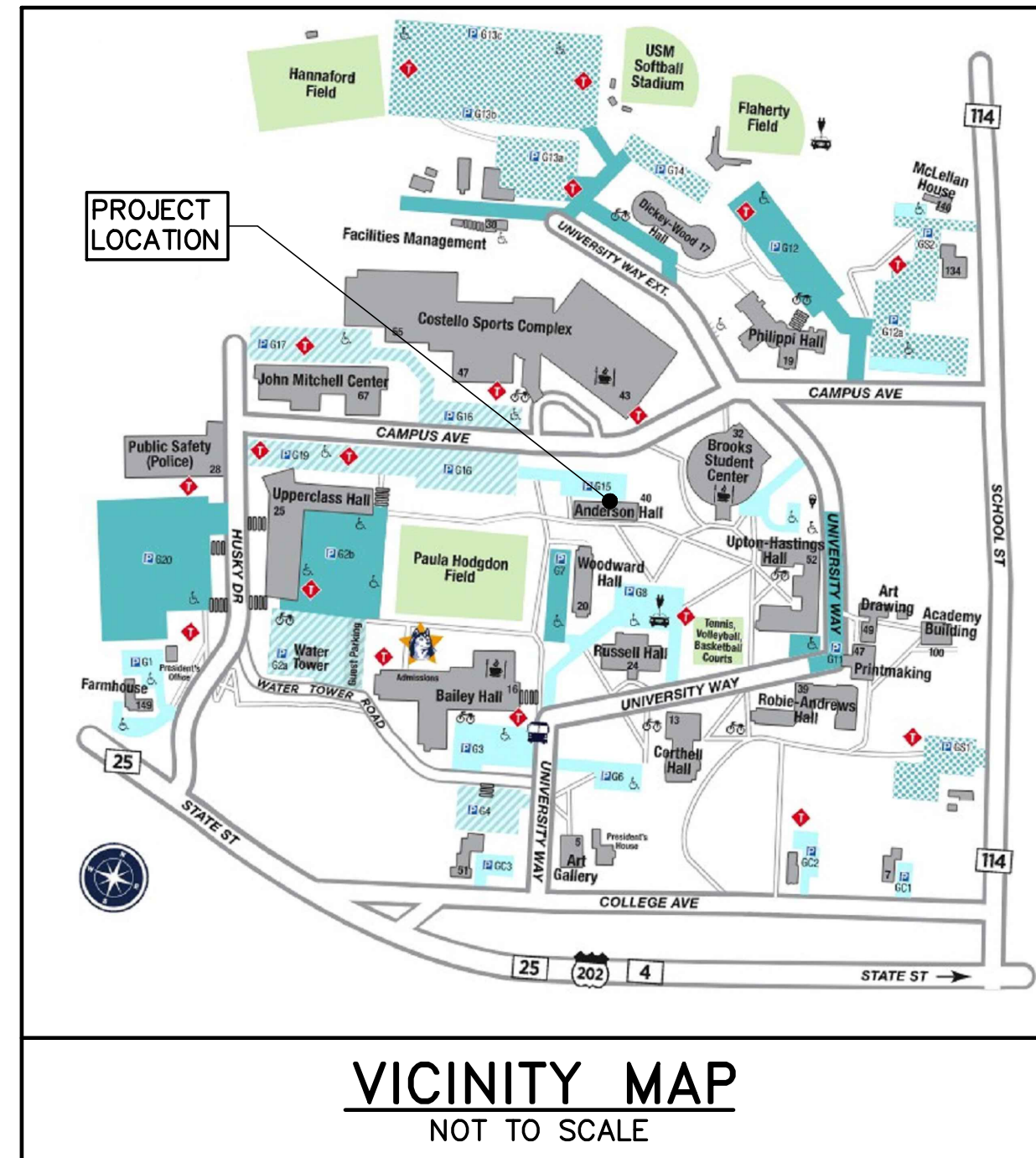
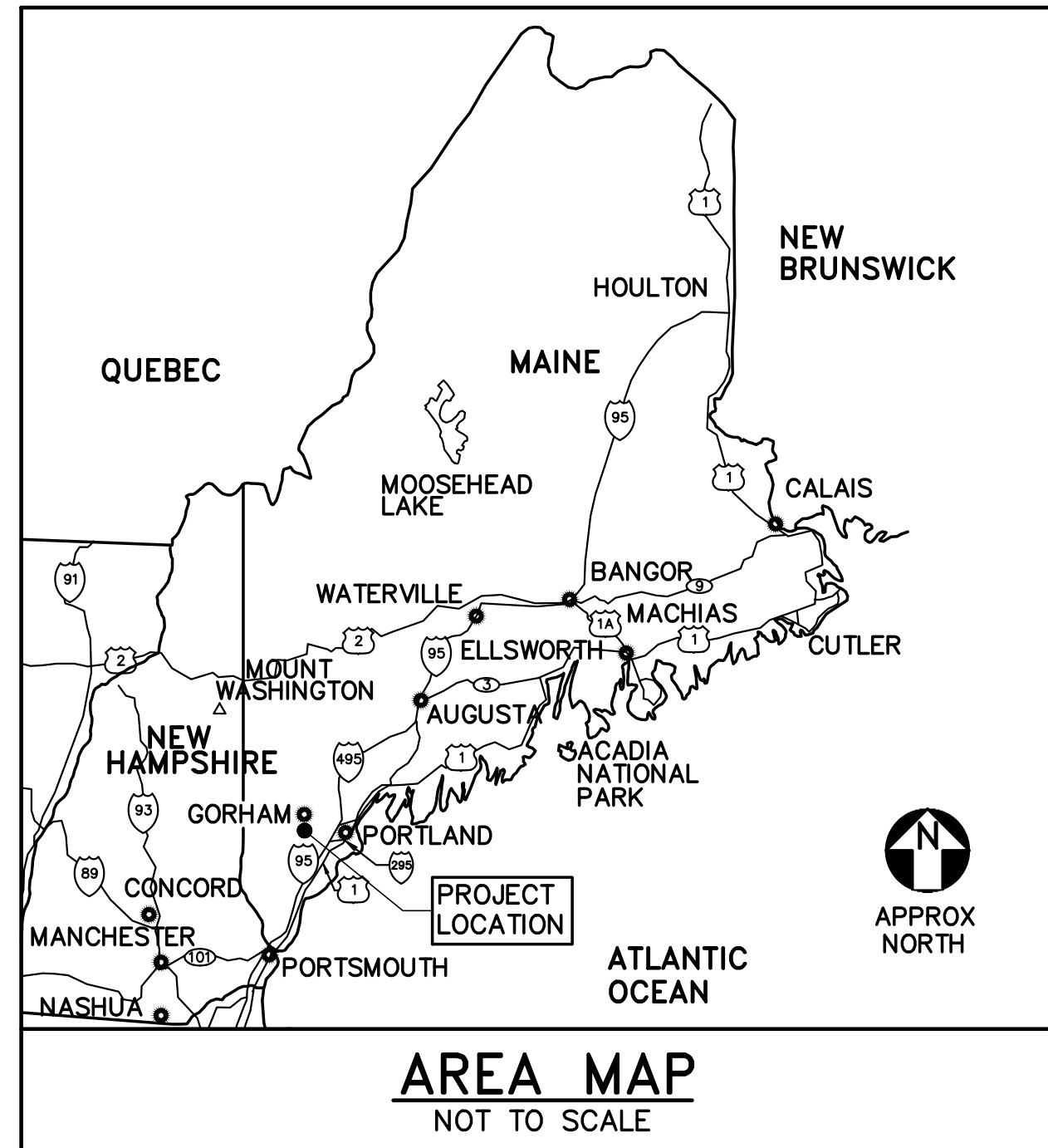


ANDERSON HALL BATHROOM RENOVATIONS

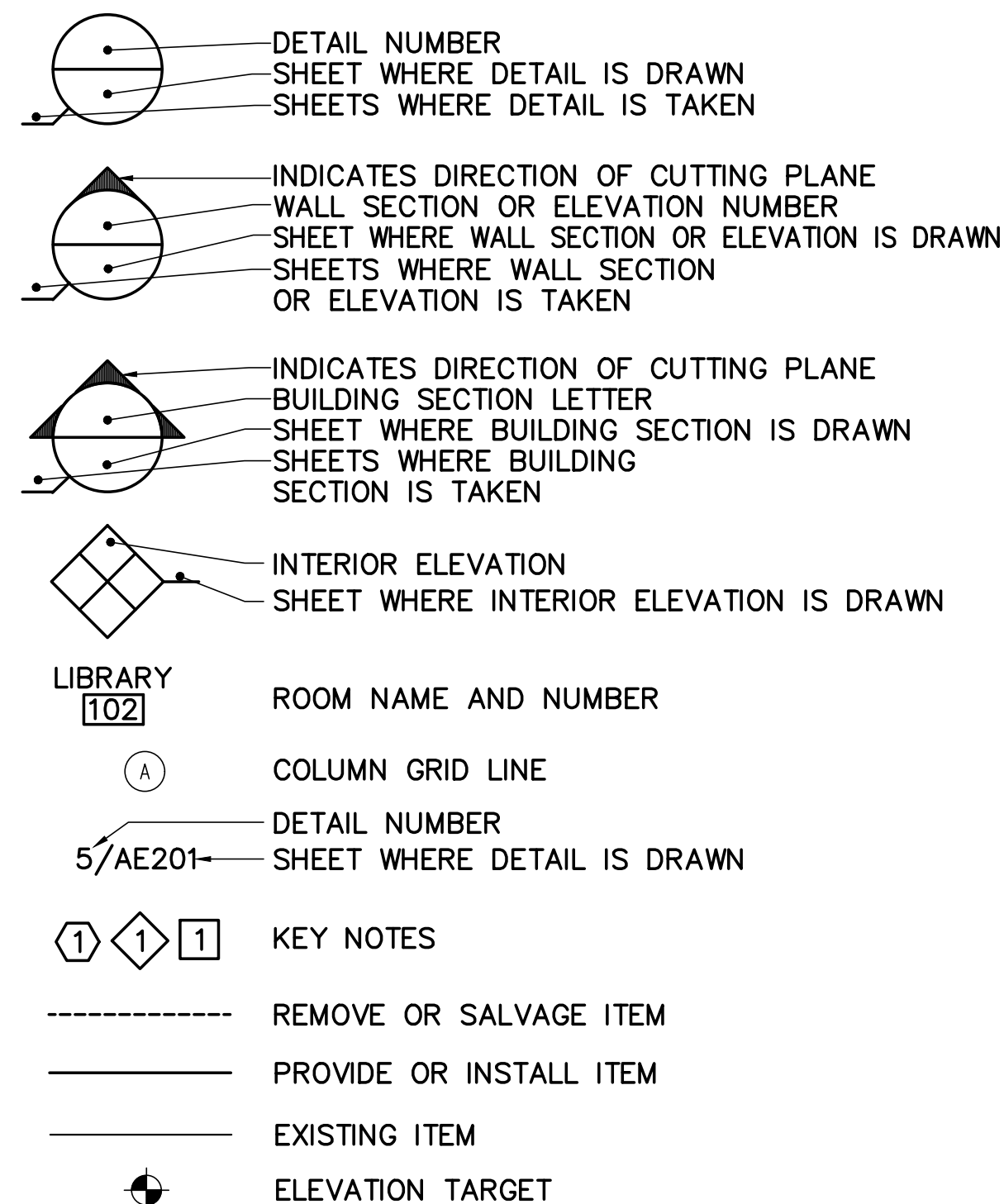
UNIVERSITY OF SOUTHERN MAINE
GORHAM MAINE



ABBREVIATIONS

%	PERCENT	MTL	METAL
&	AND	NIC	NOT IN CONTRACT
±	PLUS OR MINUS	NO, #	NUMBER
⊙	AT	MO	MASONRY OPENING
AFF	ABOVE FINISHED FLOOR	OC	ON CENTER
ALUM	ALUMINUM	PNT	PAINT, PAINTED
APPROX	APPROXIMATELY	RO	ROUGH OPENING
BLDG	BUILDING	SIM	SIMILAR
BOT	BOTTOM	SQ	SQUARE
⊖	CENTERLINE	SF	SQUARE FEET
CLR	CLEAR	SS	STAINLESS STEEL
CONC	CONCRETE	STL	STEEL
CONT	CONTINUOUS	STRUCT	STRUCTURAL
COORD	COORDINATE	SYS	SYSTEM
DIA	DIAMETER	TYP	TYPICAL
DN	DOWN	US	UNITED STATES
DWG	DRAWING	VERT	VERTICAL
EA	EACH	VIF	VERIFY IN FIELD
ELEC	ELECTRIC	W/	WITH
ELEV	ELEVATION	WD	WOOD
EXIST	EXISTING		
EXT	EXTERIOR		
FF	FINISH FLOOR		
FFE	FINISH FLOOR ELEVATION		
FIN	FINISH		
FLR	FLOOR		
FT	FOOT, FEET		
HGT	HEIGHT		
HORIZ	HORIZONTAL		
MAX	MAXIMUM		
MECH	MECHANICAL		
MFR	MANUFACTURER		
MIN	MINIMUM		

LEGEND

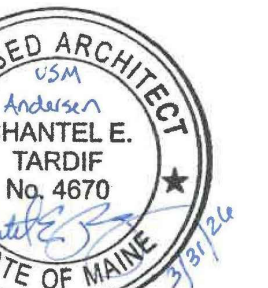


LIST OF DRAWINGS

SHEET NUMBER	DISCIPLINE	TITLE
1 OF 6	G-001	COVER SHEET, LIST OF DRAWINGS ABBREVIATIONS, LEGEND AND NOTES
2 OF 6	AD101	ANDERSON HALL BATHROOM REMOVALS PART PLANS AND ELEVATIONS
3 OF 6	AE101	ANDERSON HALL BATHROOM PART PLANS, ELEVATIONS, AND DETAILS
4 OF 6	FX101	ANDERSON HALL BATHROOMS SPRINKLER PART PLANS
5 OF 6	E-001	ELECTRICAL SYMBOLS, ABBREVIATIONS, AND GENERAL NOTES
6 OF 6	E-101	ANDERSON HALL BATHROOMS ELECTRICAL PART PLANS

GENERAL CONSTRUCTION NOTES

- WORK INCLUDED IN THIS CONTRACT SHALL CONFORM TO STATE, NATIONAL AND OTHER CODES AND ORDINANCES WHICH APPLY TO THIS PROJECT.
- FIELD VERIFY EXISTING CONDITIONS AND DIMENSIONS AND REPORT DISCREPANCIES TO THE OWNER. PROCEED WITH THE WORK ONLY AFTER THE DISCREPANCIES HAVE BEEN RESOLVED BY THE OWNER.
- WORK FROM GIVEN DIMENSIONS AND LARGE SCALE DETAILS ONLY. DO NOT SCALE DRAWINGS.
- CARE SHALL BE TAKEN BY THE CONTRACTOR TO PROTECT AREAS TO REMAIN.
- AT THE END OF EACH WORKING DAY, THE CONSTRUCTION SITE SHALL BE LEFT IN A SAFE, WEATHERTIGHT, SECURE, NEAT AND CLEAN MANNER.
- OBTAIN PERMITS WHICH ARE REQUIRED FOR THE SATISFACTORY COMPLETION OF THE WORK.
- PROVIDE TEMPORARY PROTECTION FOR DUST CONTROL, INCLUDING BUT NOT LIMITED TO: BLEACHER SEATING SYSTEM, SCOREBOARDS, SPEAKER SYSTEM, LIGHTING, BACKBOARDS, OPEN STAIRS AND CORRIDORS, ETC.
- PROVIDE BARRICADES AND SIGNAGE AT WORK AREAS TO PREVENT THE PUBLIC FROM ENTERING AREAS OF WORK.
- COORDINATE THE TIMING AND SEQUENCE OF WORK WITH OWNER AND THE APPROPRIATE AUTHORITIES.
- DISRUPTIVE WORK: DISRUPTIVE/NOISY WORK SHALL BE PERFORMED AS DIRECTED BY THE OWNER.



DESIGNED BY: KLG
DRAWN BY: SXL
CHECKED BY: CET
PROJECT: 22502.08

UNIVERSITY OF SOUTHERN MAINE
GORHAM CAMPUS
37 College Ave, Gorham, ME

ANDERSON HALL
BATHROOM RENOVATIONS
37 College Ave, Gorham, ME

COVER SHEET,
LIST OF DRAWINGS
ABBREVIATIONS,
LEGEND AND
NOTES

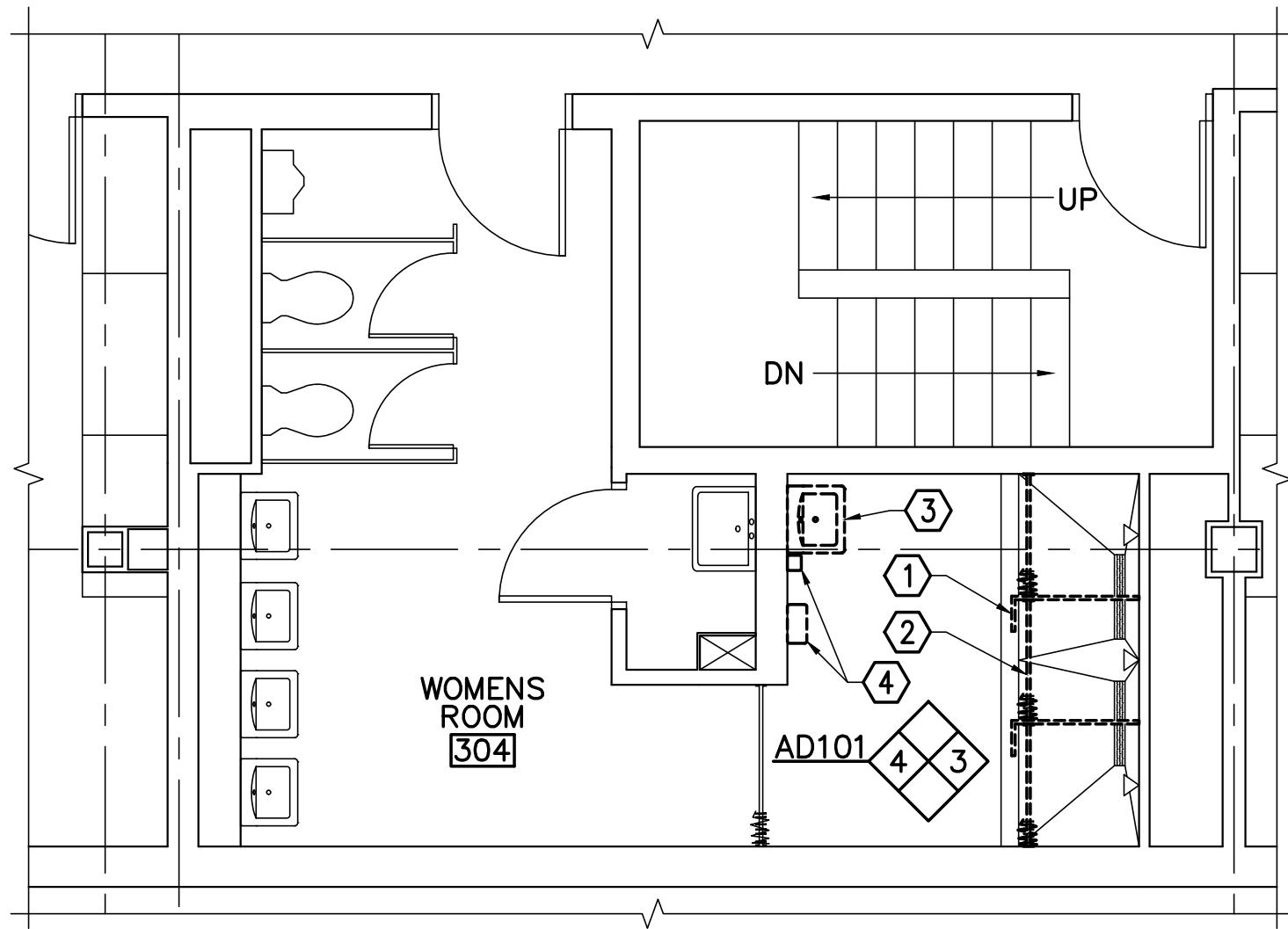
SCALE: AS NOTED

DATE: 03-31-26

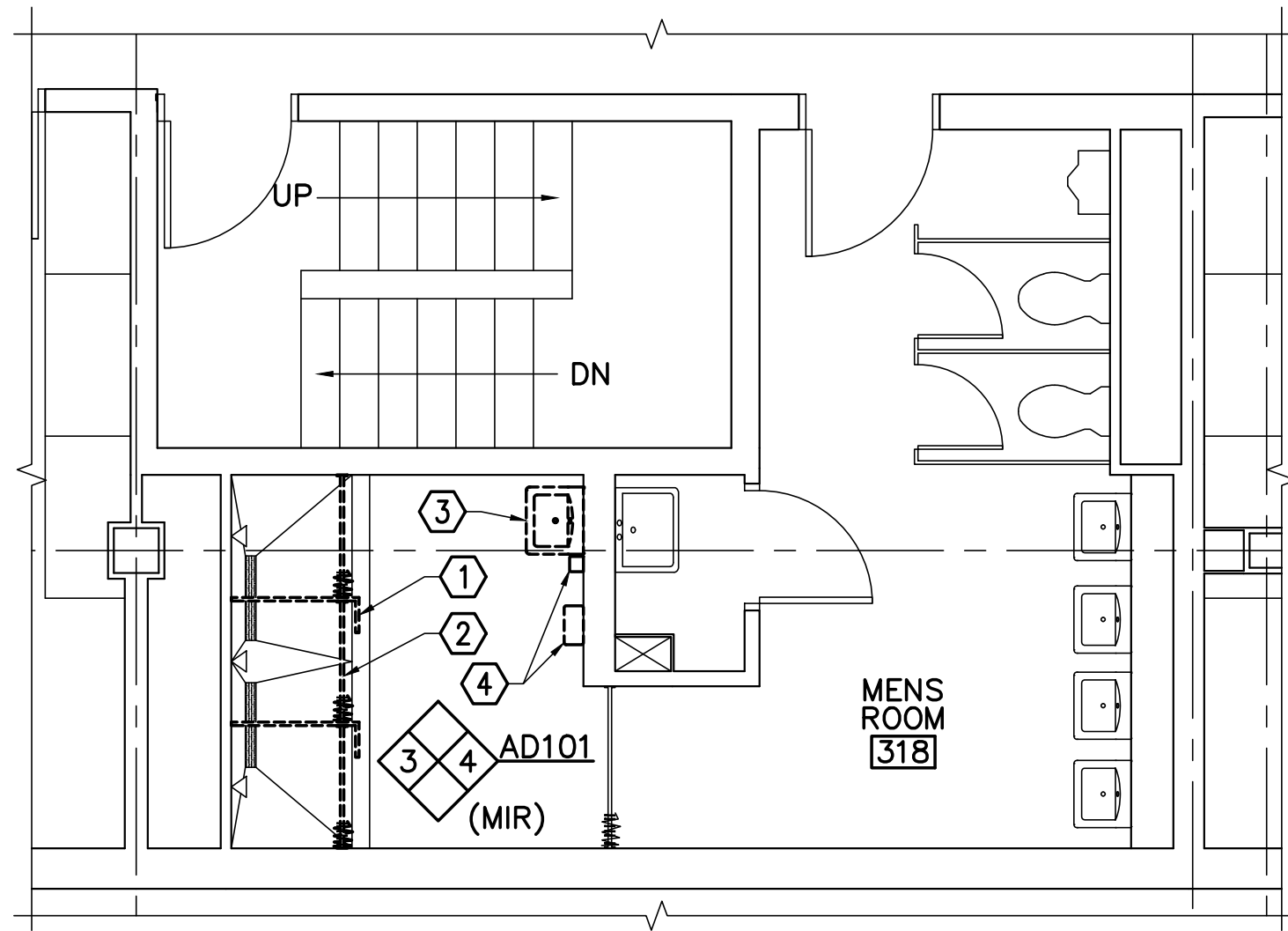
DWG.: **G-001**

SHEET: **1** OF **6**

NO.	DATE	DESCRIPTION	BY



1 ANDERSON HALL WOMENS ROOM 304 REMOVALS PART PLAN
 AD101 SCALE: 1/4"=1'-0" (WOMENS ROOMS 404, 504 SIM)



2 ANDERSON HALL MENS ROOM REMOVALS PART PLAN
 AD101 SCALE: 1/4"=1'-0" (MENS ROOMS 418, 518 SIM)

GENERAL NOTES (THIS SHEET ONLY)

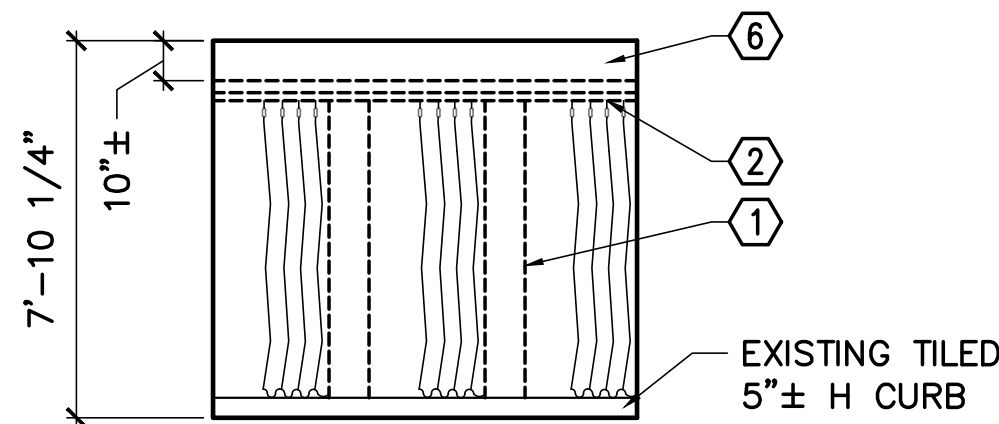
1. PROTECT EXISTING SYSTEMS AND SURFACES TO REMAIN.
2. IN AREAS WHERE CERAMIC TILE IS LEFT WITH HOLES BY THE REMOVALS OF PARTITION/BENCH/SHOWER ROD HARDWARE, REMOVE DAMAGED TILE AND REPLACE WITH CERAMIC TILE OF SAME SIZE IN CONTRASTING COLOR, GROUT. COLOR TO BE SELECTED.

REMOVALS KEYNOTES (THIS SHEET ONLY)

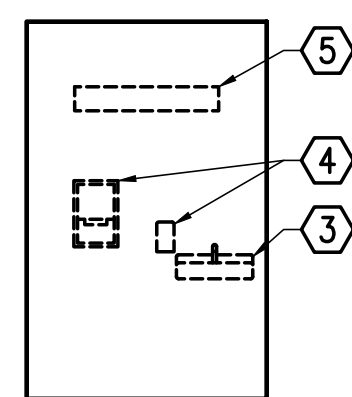
- ① REMOVE 1" SHOWER ENCLOSURE (TYP).
- ② REMOVE CURTAIN RODS AND CURTAIN (TYP).
- ③ REMOVE SINK.
- ④ REMOVE SOAP DISPENSERS AND PAPER TOWEL DISPENSER.
- ⑤ REMOVE LIGHT, SEE ELECTRICAL DRAWINGS.
- ⑥ REMOVE PLASTER SOFFIT.

LEGEND

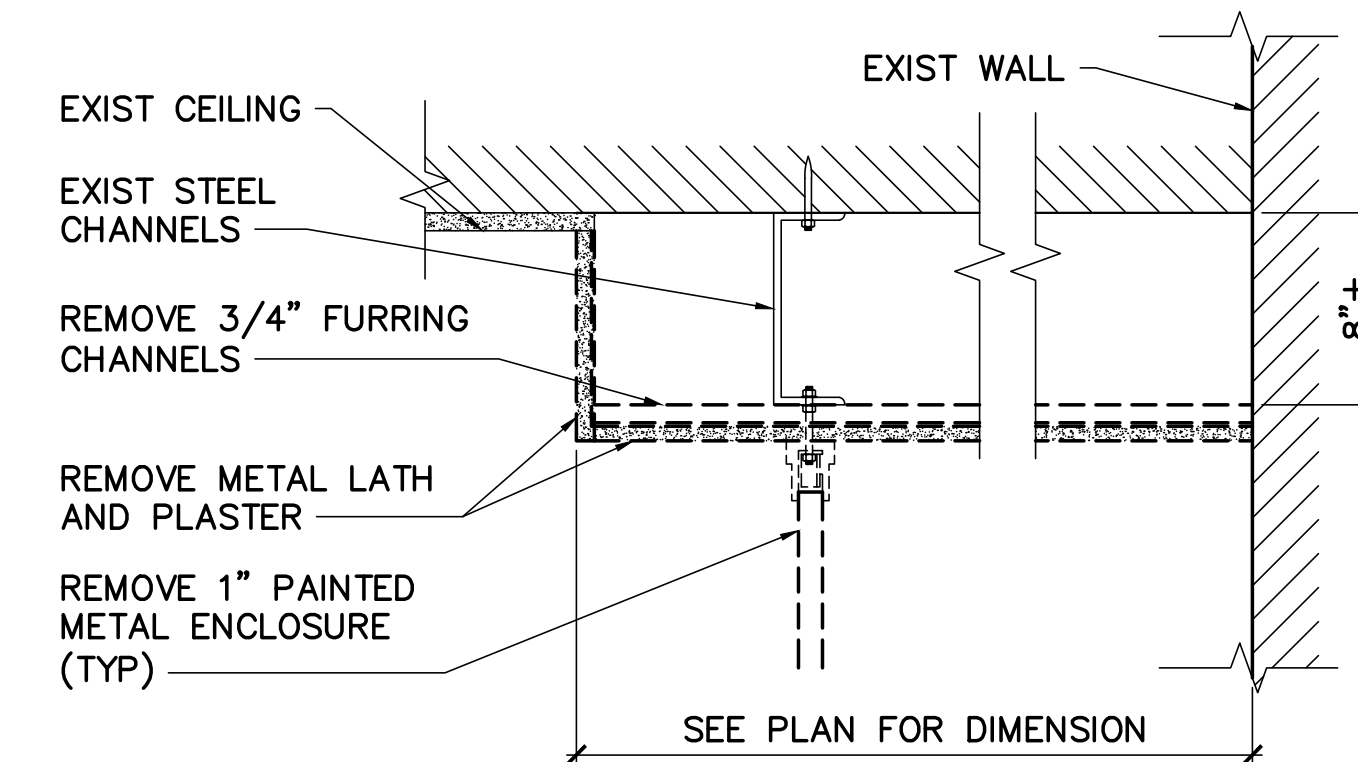
- GYPSUM BOARD CEILING/SOFFIT
- DOWN LIGHT



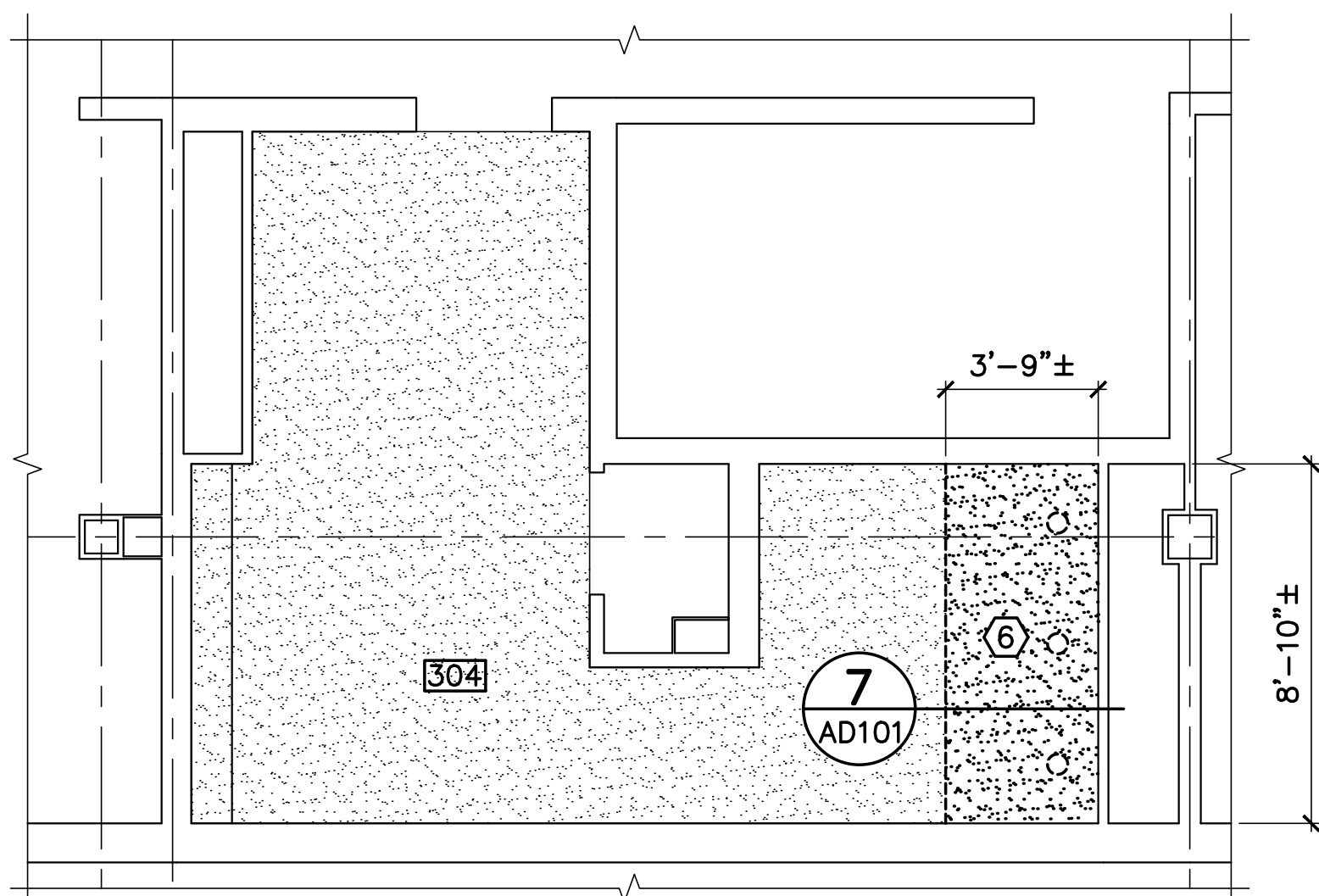
3 ANDERSON HALL WOMENS ROOM 304 REMOVALS ELEVATION
 AD101 SCALE: 1/4"=1'-0" (WOMENS & MENS ROOMS 404, 418, 504, 518 SIM)



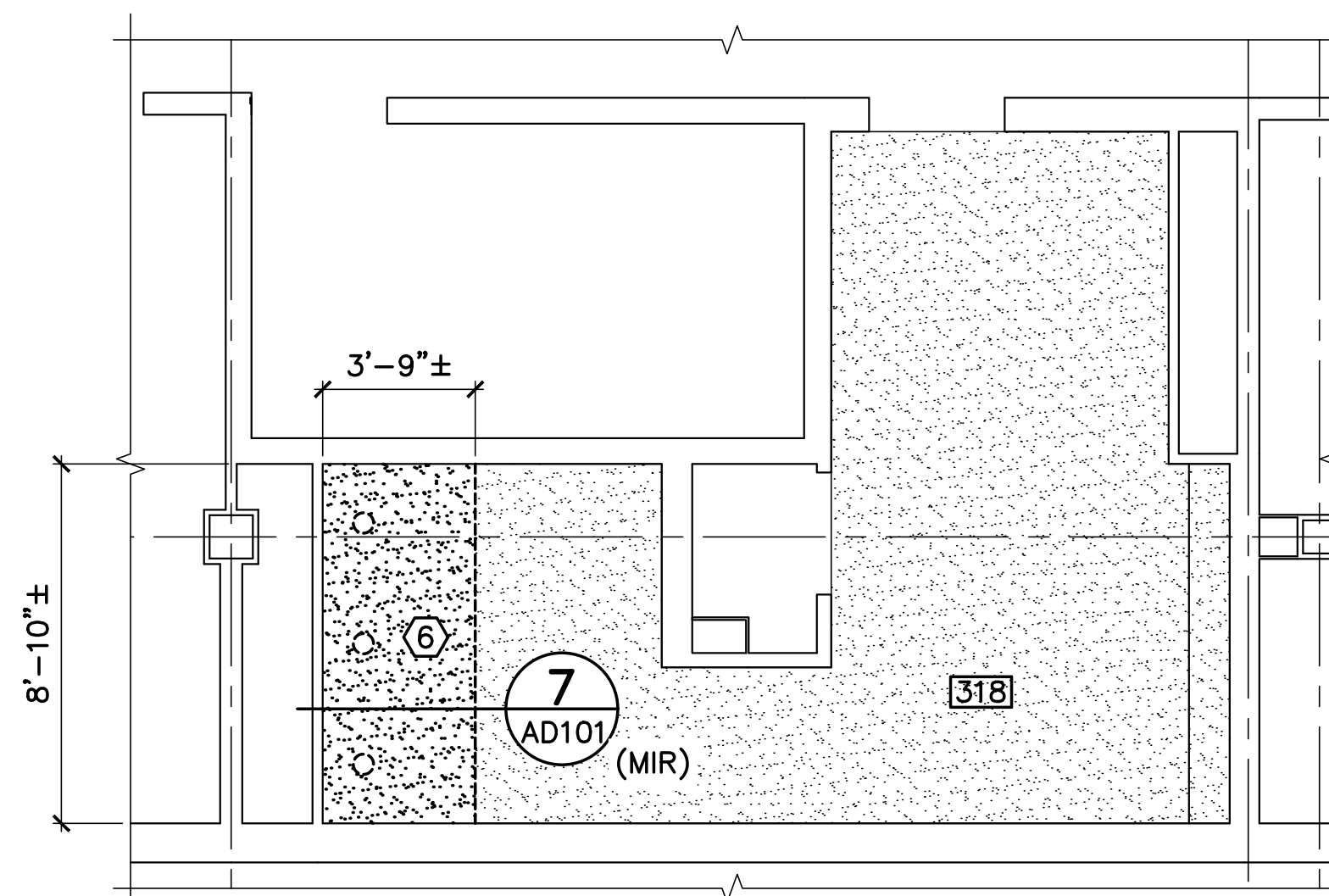
4 ANDERSON HALL WOMENS ROOM 304 REMOVALS ELEVATION
 AD101 SCALE: 1/4"=1'-0" (WOMENS & MENS ROOMS 404, 418, 504, 518 SIM)



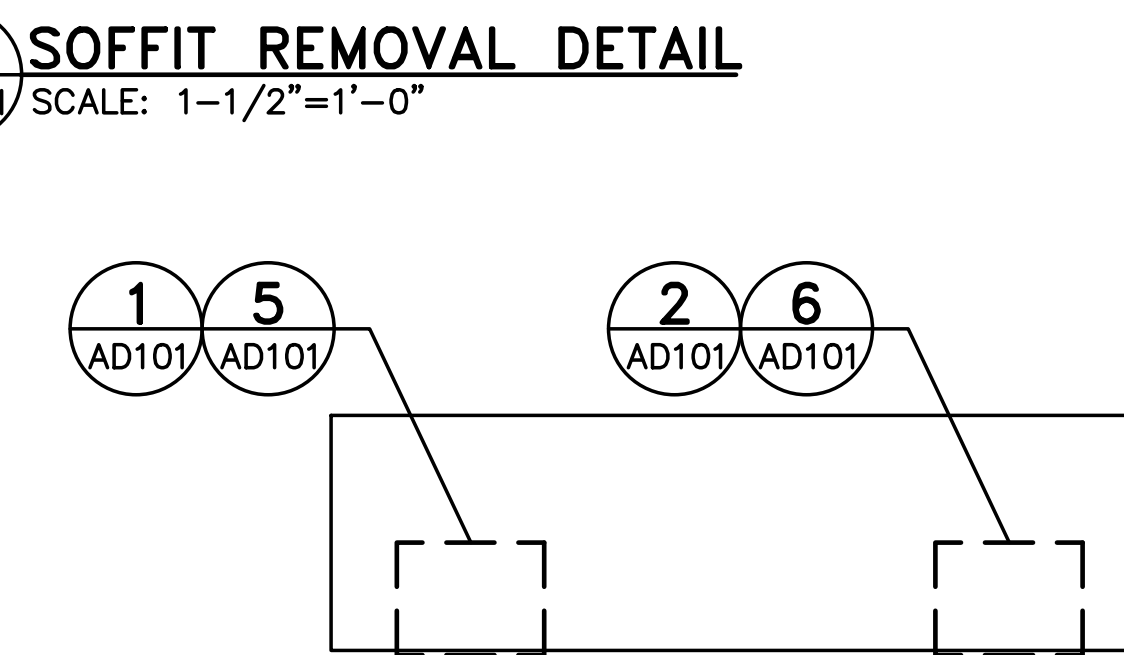
7 SOFFIT REMOVAL DETAIL
 AD101 SCALE: 1-1/2"=1'-0"



5 ANDERSON HALL WOMENS ROOM REFLECTED CEILING REMOVALS PART PLAN
 AD101 SCALE: 1/4"=1'-0" (WOMENS ROOMS 404, 504 SIM)



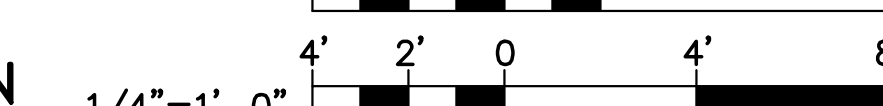
6 ANDERSON HALL MENS ROOM REFLECTED CEILING REMOVALS PART PLAN
 AD101 SCALE: 1/4"=1'-0" (MENS ROOMS 418, 518 SIM)



KEY PLAN



GRAPHIC SCALES



CHECK GRAPHIC SCALES BEFORE USING

NO.	DATE	DESCRIPTION	BY
REVISIONS			



DESIGNED BY: KLG
 DRAWN BY: SXL
 CHECKED BY: CET
 PROJECT: 22502.08

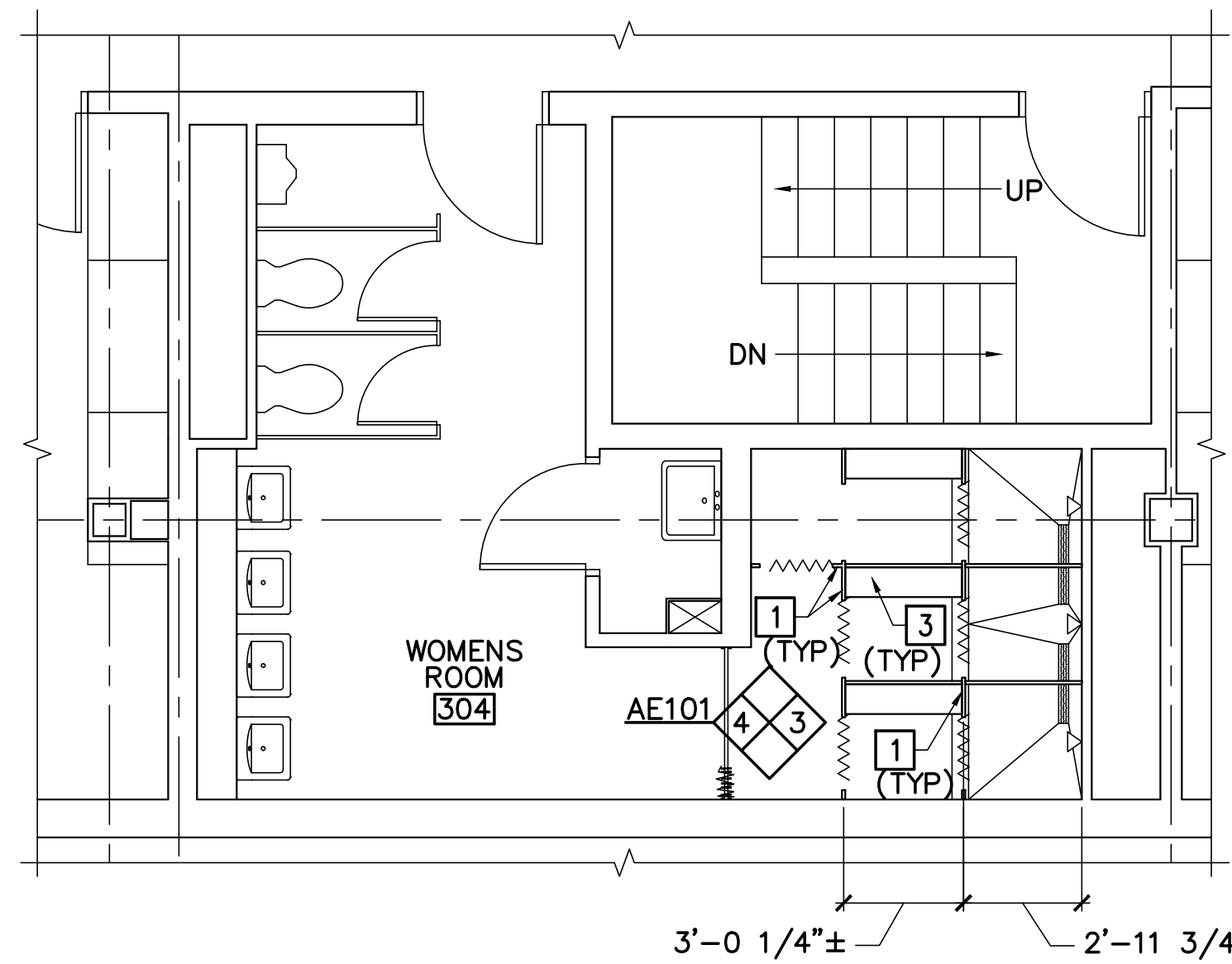
UNIVERSITY OF SOUTHERN MAINE
GORHAM CAMPUS
 37 College Ave, Gorham, ME

**ANDERSON HALL
 BATHROOM RENOVATIONS**
 37 College Ave, Gorham, ME

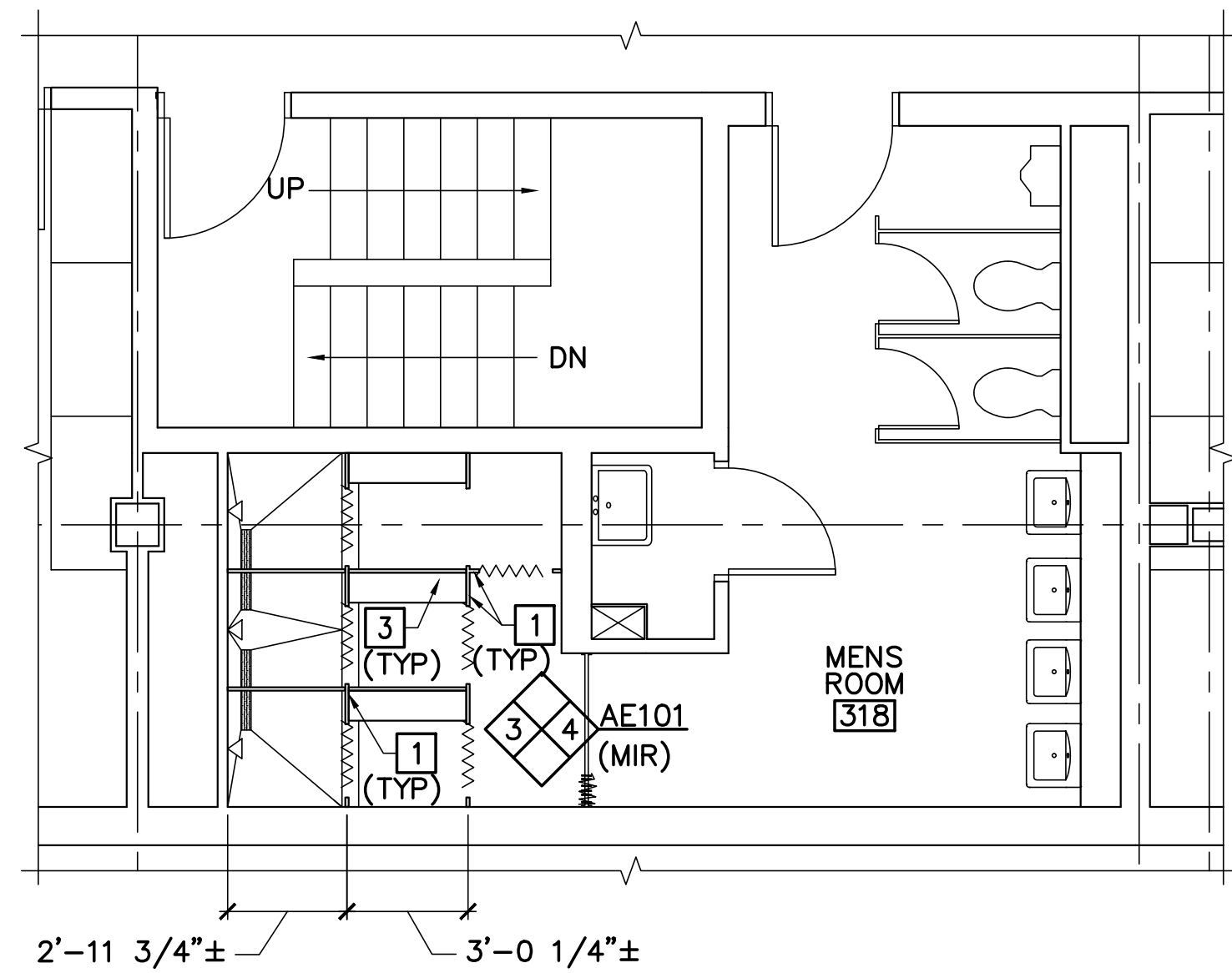
**ANDERSON HALL
 BATHROOM
 REMOVALS
 PART PLANS
 AND ELEVATIONS**

SCALE: AS NOTED
 DATE: 03-31-26

DWG.: **AD101**



1 ANDERSON HALL WOMENS ROOM 304 PART PLAN
 AE101 SCALE: 1/4"=1'-0"
 (WOMENS ROOMS 404, 504 SIM)



2 ANDERSON HALL MENS ROOM 318 PART PLAN
 AE101 SCALE: 1/4"=1'-0"
 (MENS ROOMS 418, 518 SIM)

GENERAL NOTES (THIS SHEET ONLY)

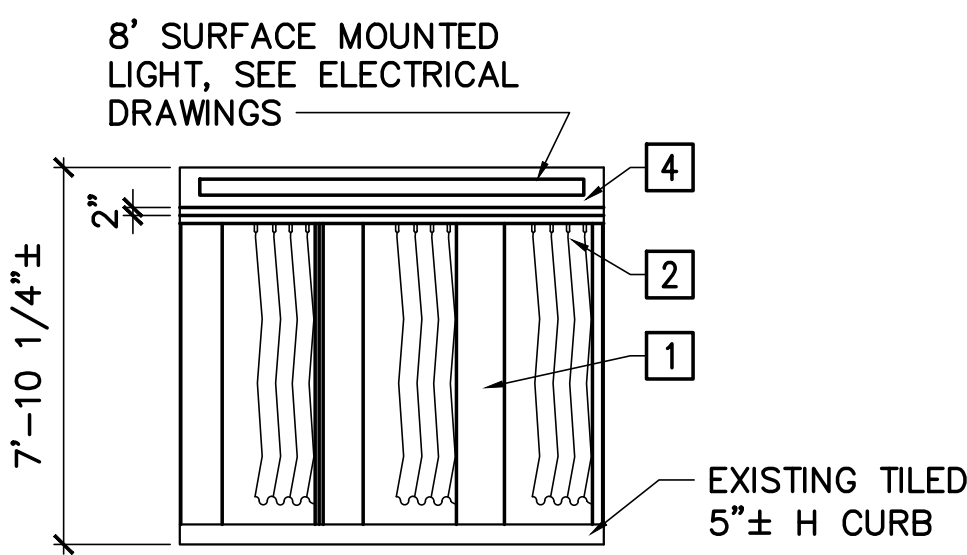
- PROTECT EXISTING SYSTEMS AND SURFACES TO REMAIN.
- IN AREAS WHERE CERAMIC TILE IS LEFT WITH HOLES BY THE REMOVALS OF PARTITION/BENCH/SOWER ROD HARDWARE, REMOVE DAMAGED TILE AND REPLACE WITH CERAMIC TILE OF SAME SIZE IN CONTRASTING COLOR, GROUT. COLOR TO BE SELECTED.
- PAINT NEW EXPOSED SPRINKLER PIPES TO MATCH EXISTING ADJACENT.

KEYNOTES (THIS SHEET ONLY)

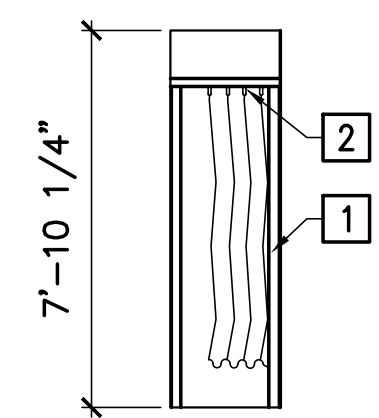
- FLOOR MOUNTED OVERHEAD BRACED HDPE SHOWER PARTITION (TYP). RETAIN TOP OF PANELS 6" FROM BOTTOM OF SOFFIT.
- HEADRAIL W/SOWER CURTAIN (TYP).
- PARTITION SUPPORTED BENCH (TYP). SEE DETAIL 5/AE101.
- SOFFIT, PNT.

LEGEND

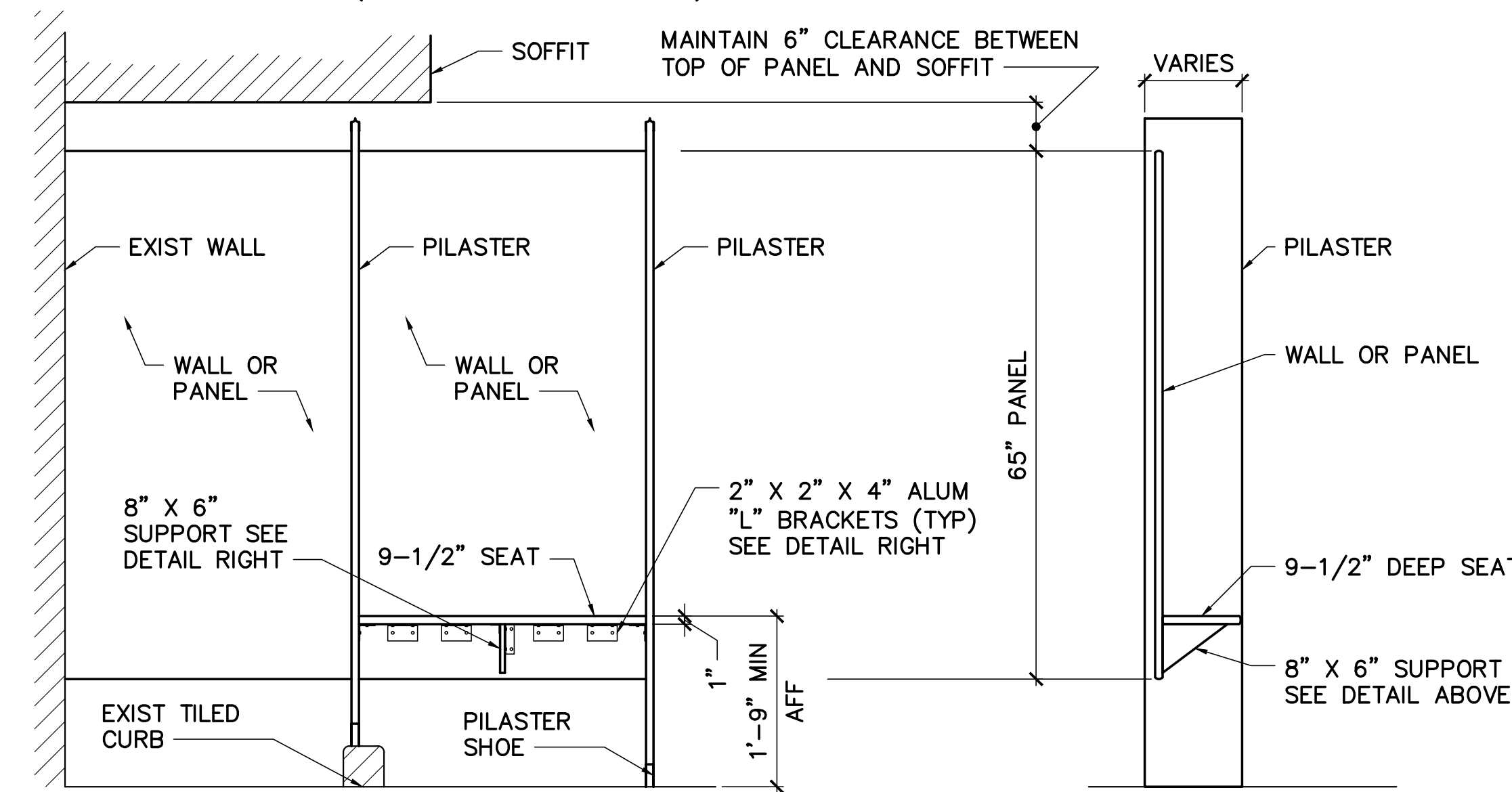
- GYPSUM BOARD CEILING/SOFFIT
- DOWN LIGHT
- 8' SURFACE MOUNTED LIGHT



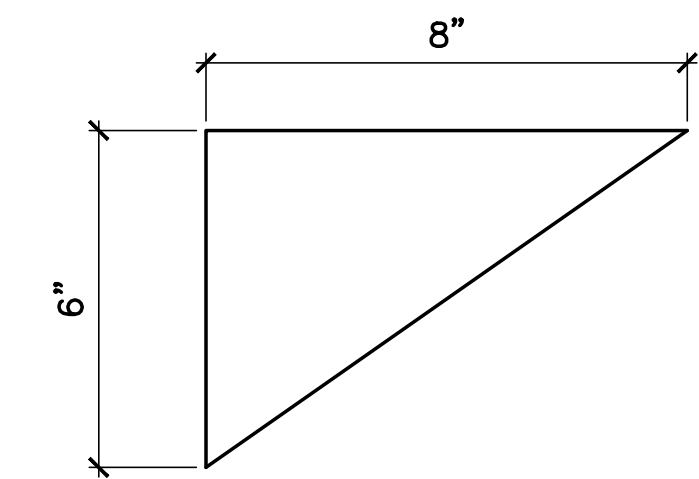
3 ANDERSON HALL WOMENS ROOM ELEVATION
 AE101 SCALE: 1/4"=1'-0"
 (WOMENS & MENS ROOMS 404, 418, 504, 518 SIM)



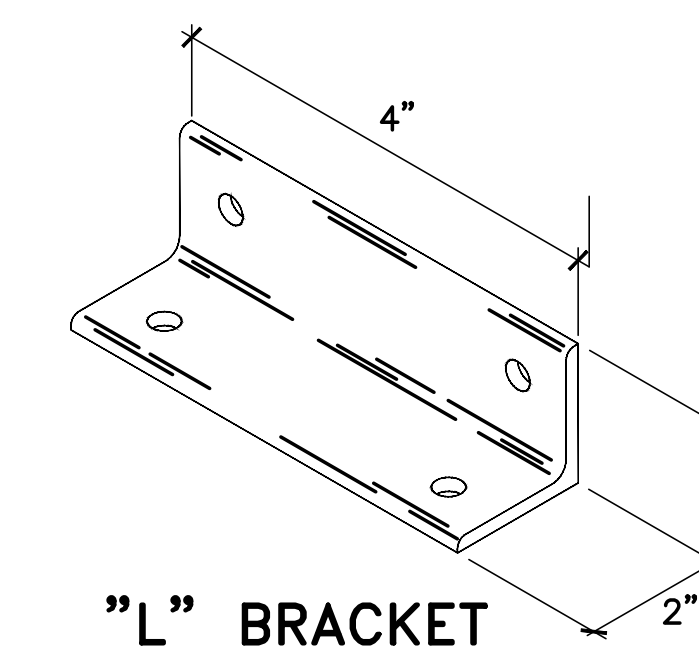
4 ANDERSON HALL WOMENS ROOM ELEVATION
 AE101 SCALE: 1/4"=1'-0"
 (WOMENS & MENS ROOMS 404, 418, 504, 518 SIM)



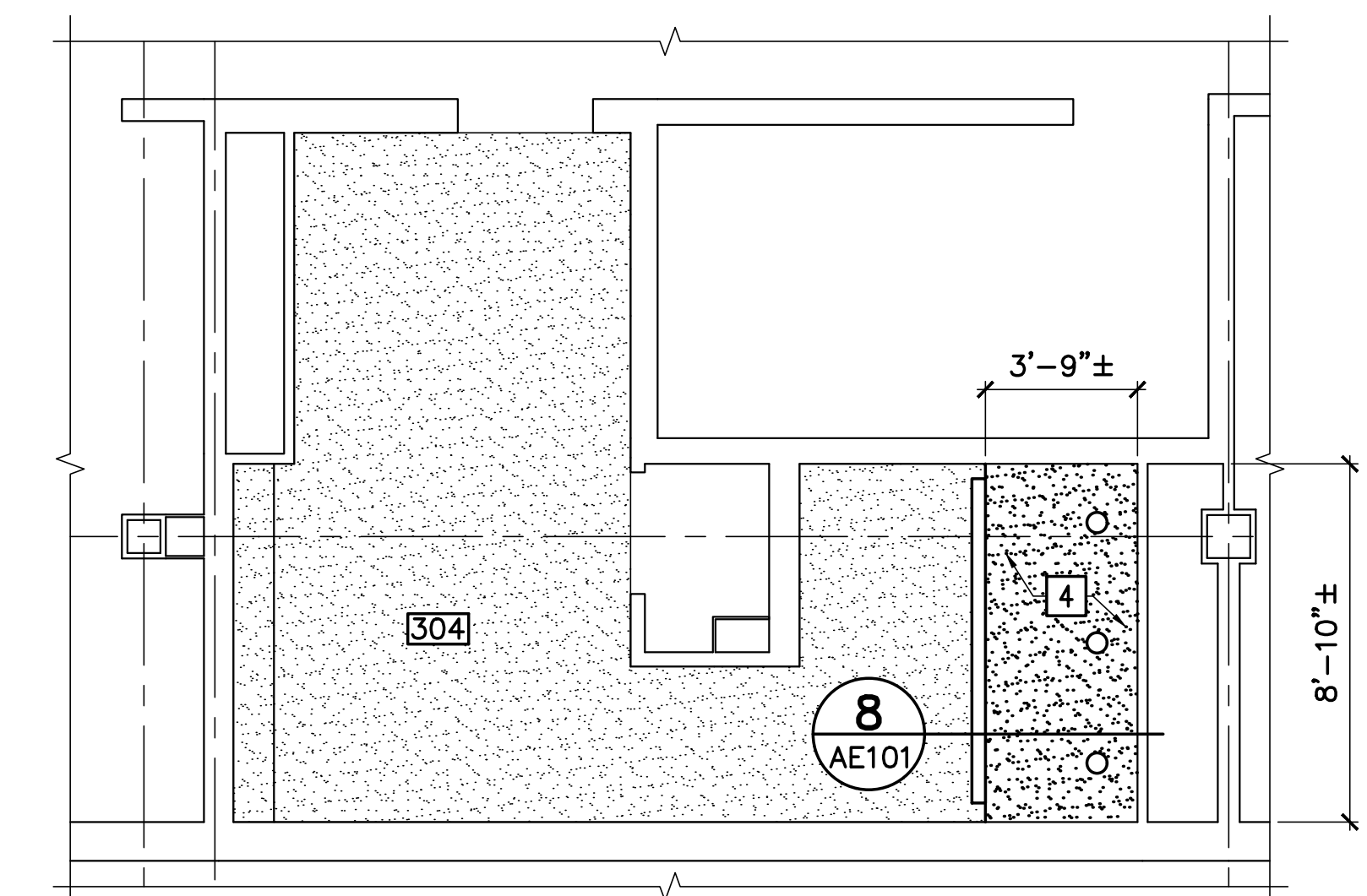
5 TYPICAL SHOWER SEAT ELEVATION
 AE101 SCALE: 3/4"=1'-0"



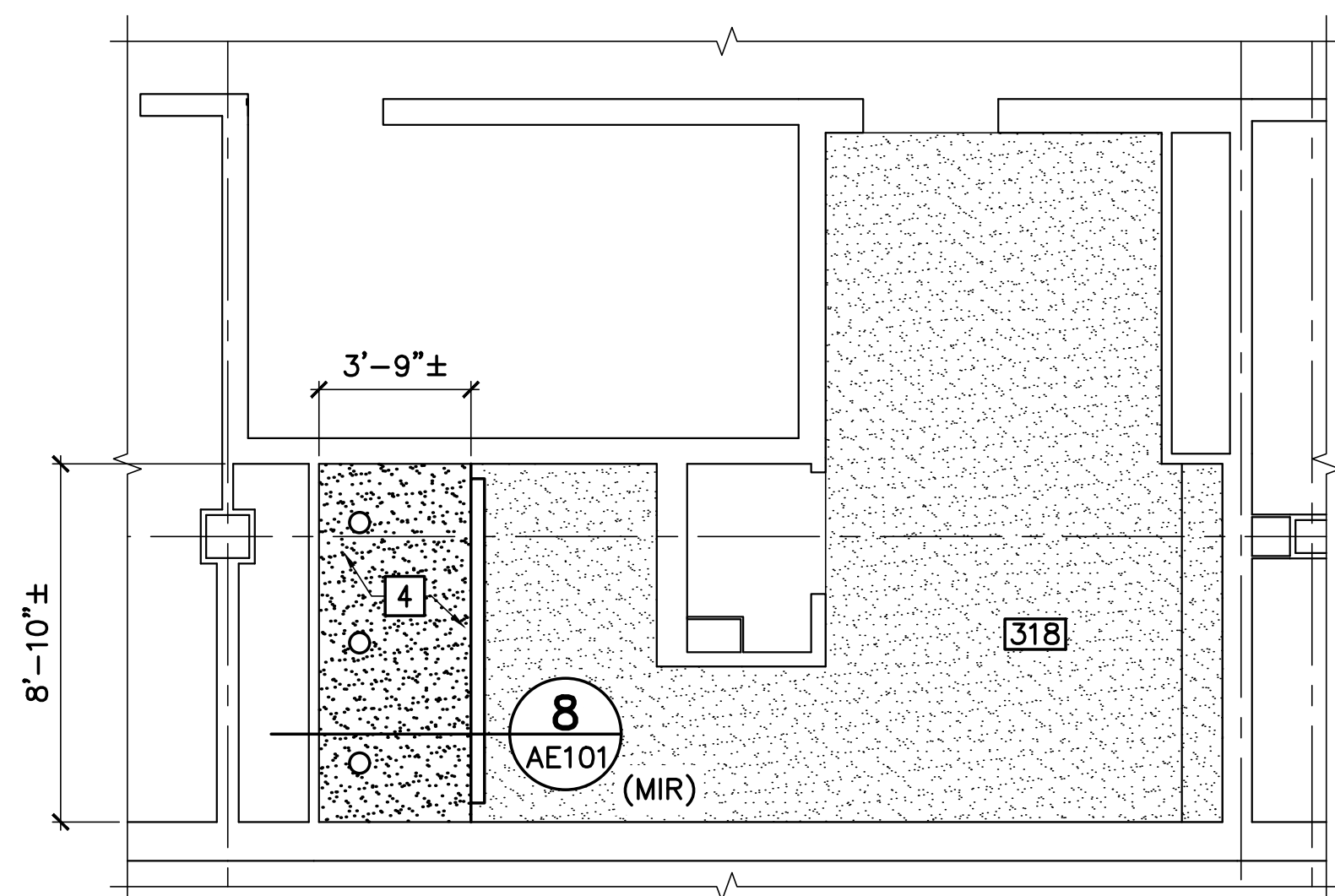
SEAT SUPPORT
 NOT TO SCALE



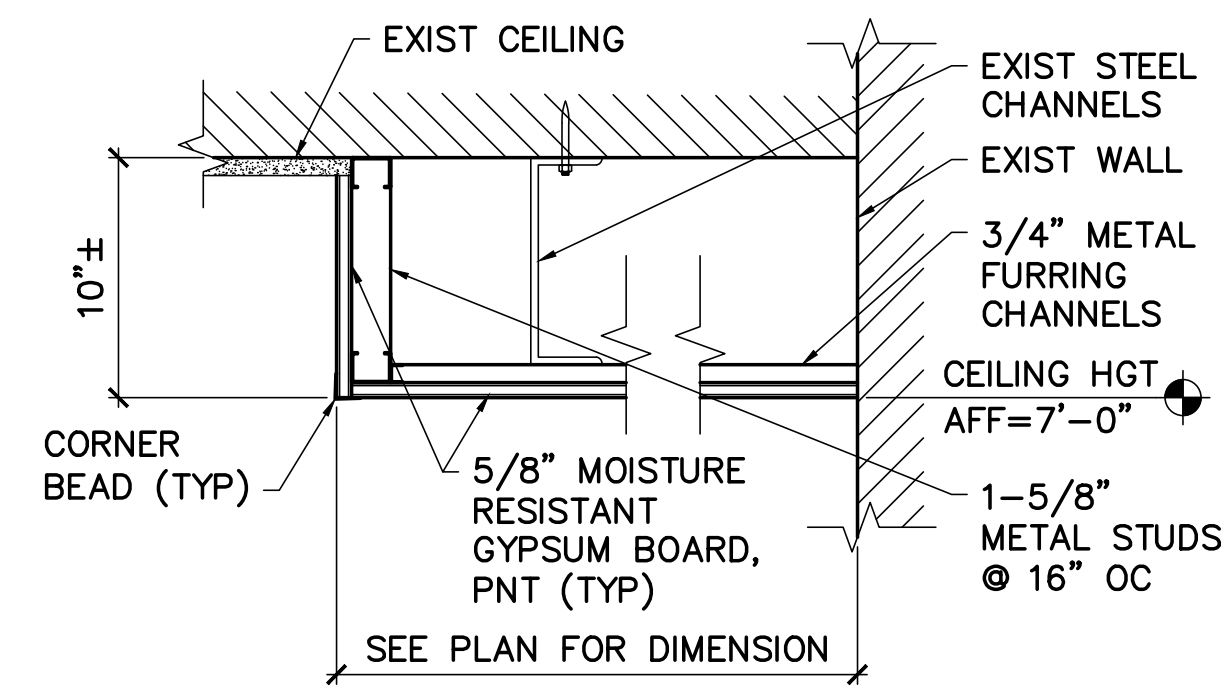
"L" BRACKET
 NOT TO SCALE



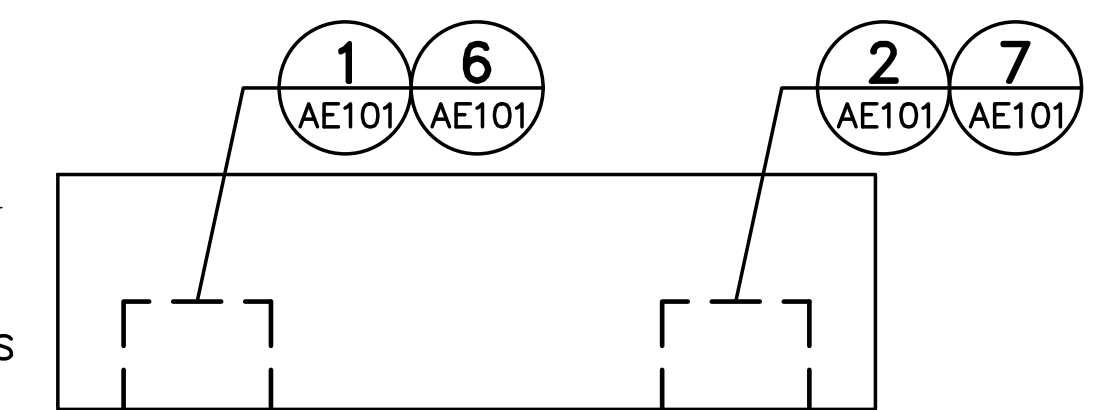
6 ANDERSON HALL WOMENS ROOM 304 REFLECTED CEILING PART PLAN
 AE101 SCALE: 1/4"=1'-0"
 (WOMENS ROOMS 404, 504 SIM)



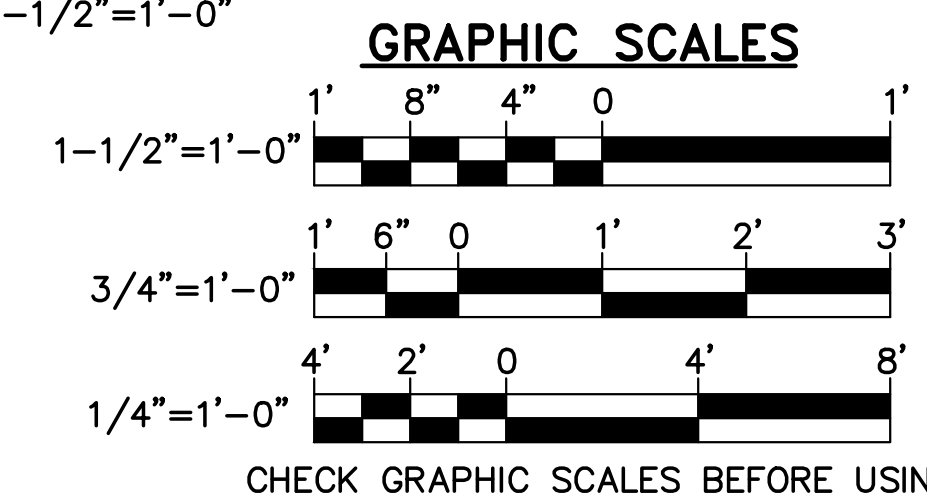
7 ANDERSON HALL MENS ROOM 318 REFLECTED CEILING PART PLAN
 AE101 SCALE: 1/4"=1'-0"
 (MENS ROOMS 418, 518 SIM)



8 SOFFIT DETAIL
 AE101 SCALE: 1-1/2"=1'-0"



KEY PLAN



NO.	DATE	DESCRIPTION	BY
REVISIONS			



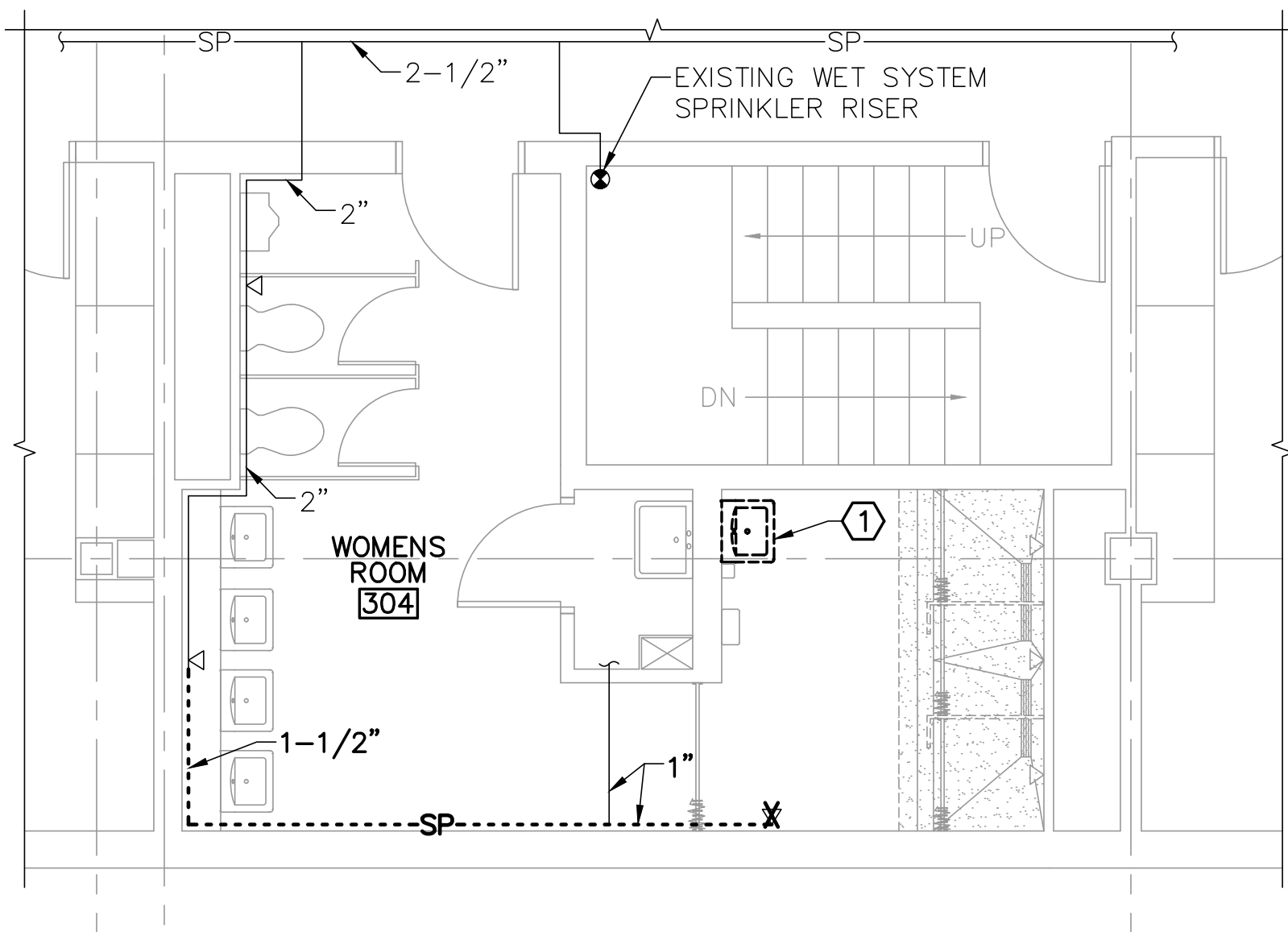
DESIGNED BY: KLG
 DRAWN BY: SXL
 CHECKED BY: CET
 PROJECT: 22502.08

UNIVERSITY OF SOUTHERN MAINE
GORHAM CAMPUS
 37 College Ave, Gorham, ME

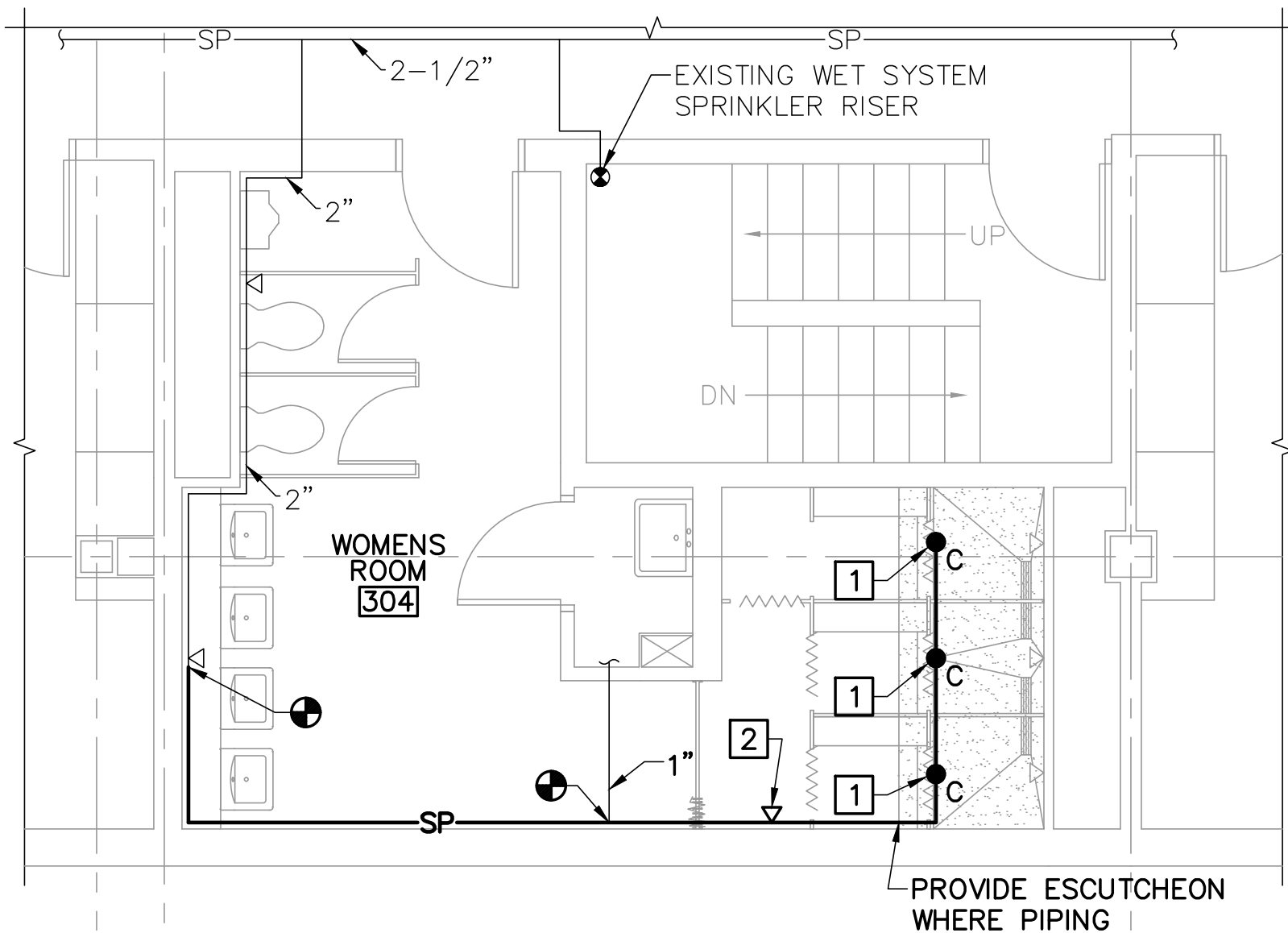
ANDERSON HALL
BATHROOM RENOVATIONS
 37 College Ave, Gorham, ME

ANDERSON HALL
BATHROOM PART PLANS, ELEVATIONS, AND DETAILS

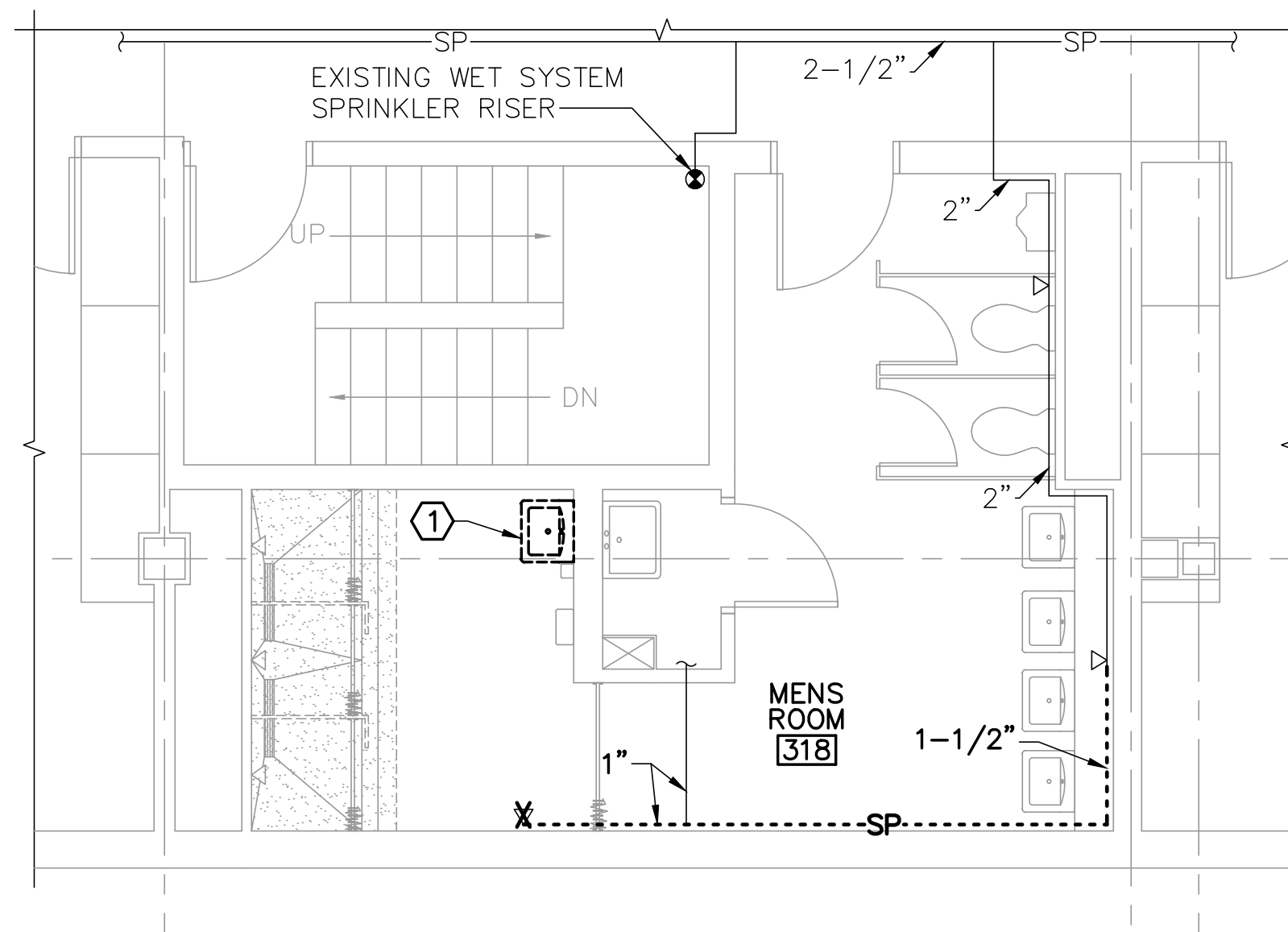
31 Mar, 2026 - 12:30pm
 Y:\22502.08\22502.08-AE101.dwg



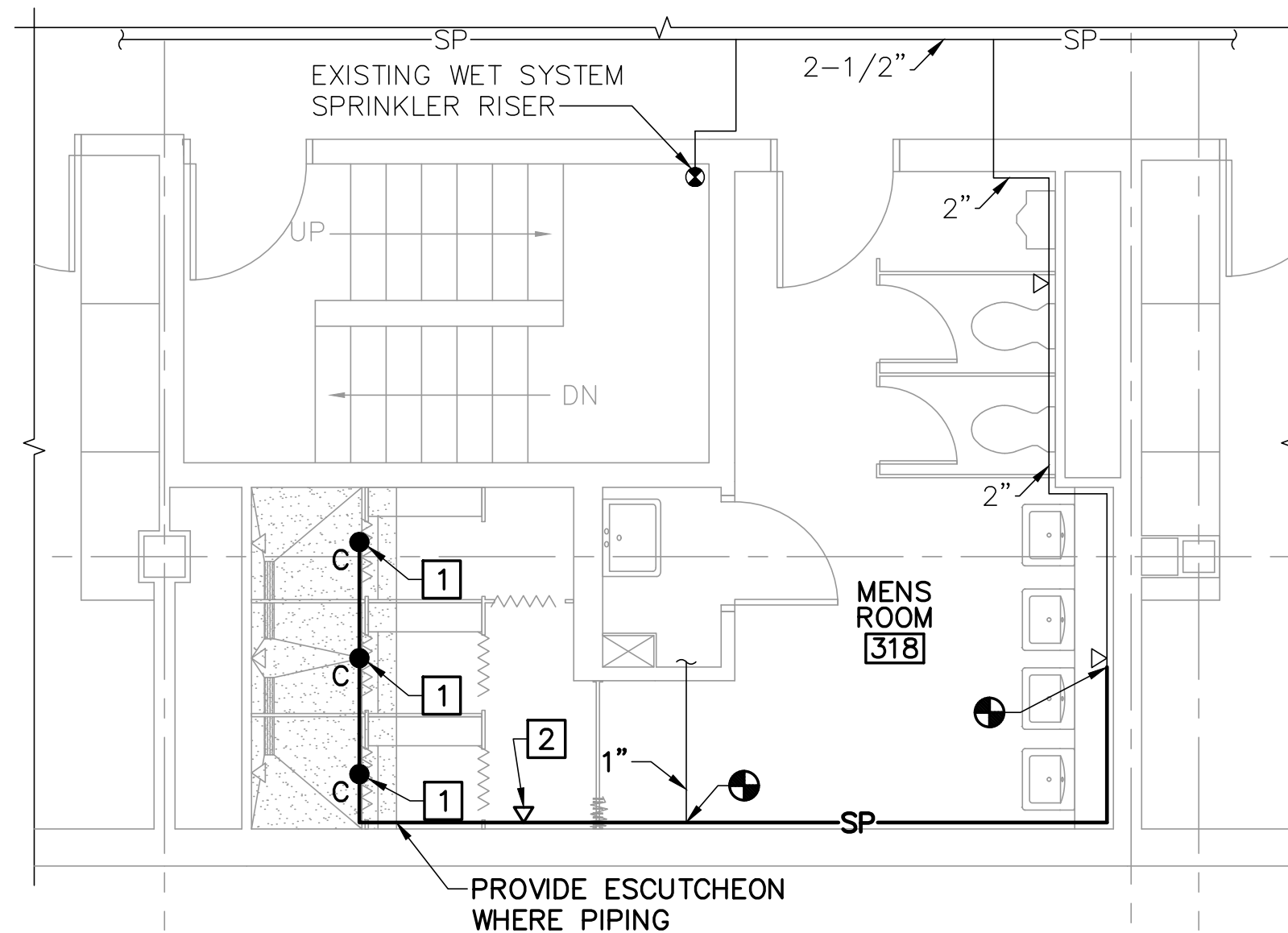
1 ANDERSON HALL WOMEN'S ROOM 304 PLUMBING AND SPRINKLER REMOVALS PART PLAN
 FX101 SCALE: 1/4"=1'-0" (WOMENS ROOMS 404, 504 SIM)



3 ANDERSON HALL WOMEN'S ROOM 304 SPRINKLER PART PLAN
 FX101 SCALE: 1/4"=1'-0" (WOMENS ROOMS 404, 504 SIM)



2 ANDERSON HALL MEN'S ROOM 318 PLUMBING AND SPRINKLER REMOVALS PART PLAN
 FX101 SCALE: 1/4"=1'-0" (MENS ROOMS 418, 518 SIM)



4 ANDERSON HALL MEN'S ROOM 318 SPRINKLER PART PLAN
 FX101 SCALE: 1/4"=1'-0" (MENS ROOMS 418, 518 SIM)

FIRE SUPPRESSION GENERAL NOTES

- MODIFY THE EXISTING WET-PIPE SPRINKLER SYSTEM AS INDICATED TO SUPPORT WORK AREA MODIFICATIONS. SPRINKLER SYSTEM MUST BE IN ACCORDANCE WITH THE PRESCRIPTIVE REQUIREMENTS OF NFPA 13 CURRENTLY ADOPTED EDITIONS, TO PROVIDE FULL WET-PIPE SPRINKLER SYSTEM COVERAGE. THE INSTALLATION MUST BE REPRESENTATIVE OF FIELD-VERIFIED CONDITIONS.
- THE EXISTING SPRINKLER SYSTEM IS TO BE KEPT IN SERVICE FOR THE MAXIMUM EXTENT PRACTICABLE. WHERE SYSTEM INTERRUPTIONS ARE NECESSARY AND APPROVED BY THE OWNER, DO NOT INTERRUPT EXISTING SPRINKLER SYSTEM WITHOUT WRITTEN PERMISSION FROM THE OWNER. THE IMPAIRMENT MUST COMPLY WITH NFPA 241. DURING IMPAIRMENTS, THIS MUST MINIMALLY INCLUDE A FIRE WATCH. PROVIDE WRITTEN NOTIFICATION OF INTENT TO INTERRUPT THE SPRINKLER SYSTEM 14 DAYS PRIOR TO COMMENCEMENT OF WORK. THE SYSTEM IS TO BE RESTORED TO OPERATIONAL AT THE END OF EACH WORK DAY.
- COORDINATE ROUTING OF SPRINKLER PIPING WITH OTHER TRADES AND EXISTING-TO-REMAIN CONSTRUCTION AND UTILITIES. SPRINKLER LAYOUT AND PIPING MODIFICATIONS MUST BE PROVIDED AT NO ADDITIONAL COST TO THE OWNER TO MEET REQUIREMENTS OF NFPA 13.
- UNLESS NOTED OTHERWISE PROVIDE NFPA 13 LIGHT HAZARD SPRINKLER COVERAGE. THE DESIGN AREA MUST BE A MINIMUM OF 1,500 SQUARE FEET.
- VERIFY EXISTING CONDITIONS AND DIMENSIONS OF THE EXISTING BUILDING AND SYSTEM AND REPORT DISCREPANCIES TO THE OWNER. PROCEED WITH THE WORK ONLY AFTER THE DISCREPANCIES HAVE BEEN RESOLVED BY THE OWNER.
- PIPING MUST BE SCHEDULE 40 BLACK STEEL, 175 PSIG RATED. PIPING AND EQUIPMENT MUST BE CONCEALED ABOVE SUSPENDED CEILINGS WHERE SUSPENDED CEILINGS ARE PRESENT OR TO BE PROVIDED.
- PROVIDE HANGERS AND SUPPORTS FOR SYSTEMS, INCLUDING PIPING, DEVICES, AND COMPONENTS IN ACCORDANCE WITH NFPA 13. WHERE NFPA CODES DO NOT OFFER SPECIFIC GUIDANCE, PROVIDE IN ACCORDANCE WITH APPLICABLE STRUCTURAL CODES.
- DO NOT CONCEAL ITEMS IN FINISHED WALLS OR CEILINGS PRIOR TO INSPECTION AND ACCEPTANCE BY OWNER.
- SPRINKLERS MUST BE QUICK RESPONSE, CONCEALED PENDANT TYPE WITH WHITE, FLAT, FLUSH COVER PLATE UNLESS NOTED OTHERWISE. DO NOT REINSTALL EXISTING SPRINKLERS.

FIRE SUPPRESSION LINE TYPE LEGEND

- EXISTING ITEMS TO REMAIN
- X-X-X-X-X- REMOVE ITEMS
- REMOVE PIPING
- PROVIDE ITEMS
- SP— SPRINKLER PIPE

GENERAL NOTE

- PERFORM HYDRAULIC CALCULATIONS ON EXISTING SPRINKLER SYSTEM TO VERIFY BRANCH LINE SIZES WHERE ADDITIONAL SPRINKLER HEADS ARE PROVIDED. SPRINKLER COVERAGE SHALL BE FOR LIGHT HAZARD.
- PROVIDE SPARE CONCEALED TYPE SPRINKLER HEAD(S) IN EXISTING SPARE HEAD CABINET IN ACCORDANCE WITH NFPA 13.

REMOVALS KEYNOTES (THIS SHEET ONLY)

- ① REMOVE WALL MOUNTED LAVATORY AND FAUCET. CAP WATER, WASTE AND VENT PIPING BEHIND FINISHED WALL.

KEYNOTES (THIS SHEET ONLY)

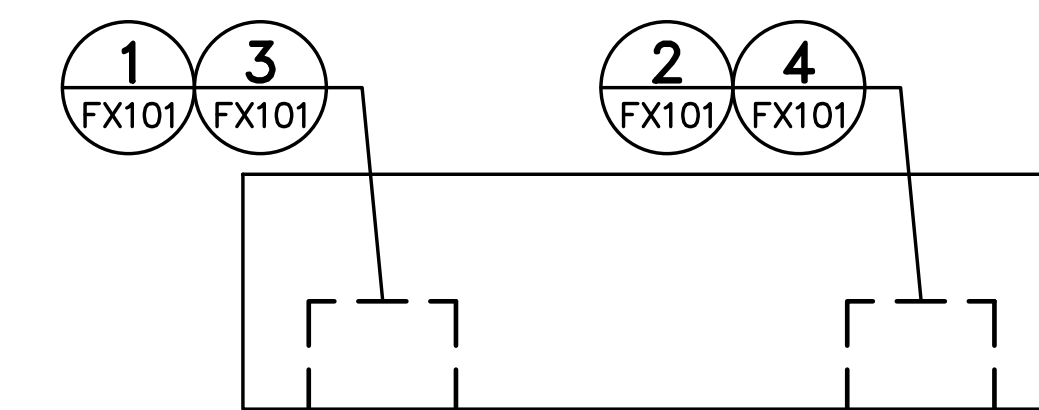
- ① LOCATE SPRINKLER HEAD WITHIN NFPA 13 REQUIREMENTS FROM CURTAIN RAIL SO THAT SHOWER CURTAIN AND ROD ARE NOT CLASSIFIED AS OBSTRUCTIONS.
- ② PROVIDE NEW SPRINKLER HEAD TO MATCH EXISTING HEAD TYPE, TEMPERATURE, RESPONSE, AND FINISH.

FIRE SUPPRESSION SYMBOLS LEGEND

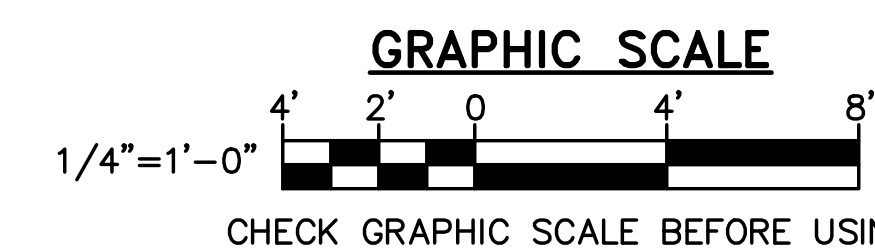
- > PIPE ELBOW UP OR DOWN
- > PIPE TEE UP OR DOWN
- > CAP
- SPRINKLER RISER
- C PENDENT SPRINKLER
"C"=CONCEALED SPRINKLER WITH COVER PLATE
- ⊗ C REMOVE EXISTING PENDANT SPRINKLER ON DROP/ARM-OVER/RETURN BEND
"C"=CONCEALED SPRINKLER WITH COVER PLATE
- UPRIGHT SPRINKLER
- ⊙ UPRIGHT SPRINKLER ON SPRIG
- ◁ SIDEWALL SPRINKLER
- ⊗ REMOVE EXISTING SIDEWALL SPRINKLER
- ⊕ CONNECT TO EXISTING

FIRE SUPPRESSION ABBREVIATIONS

- AFF ABOVE FINISHED FLOOR
- DN DOWN
- ELEV ELEVATOR, ELEVATION
- EXIST EXISTING
- FT FOOT/FEET
- GPM GALLONS PER MINUTE
- IN INCHES
- MECH MECHANICAL
- NFPA NATIONAL FIRE PROTECTION ASSOCIATION
- PSIG POUNDS PER SQUARE INCH, GAUGE
- QTY QUANTITY
- SF SQUARE FOOT
- TYP TYPICAL
- W/ WITH



KEY PLAN



NO.	DATE	DESCRIPTION	BY



ELECTRICAL SYMBOLS

LIGHTING

- WALL MOUNTED LED FIXTURE
- ⊙ RECESSED DOWNLIGHT FIXTURE

LINE TYPE LEGEND

- REMOVE EXISTING ITEMS
- _____ EXIST ITEMS TO REMAIN
- _____ PROVIDE ITEMS

WIRE SIZE	HOMERUNS (20A CIRCUIT) MAXIMUM DISTANCE IN FEET	
	120V/1PH	208V/1PH
#12	60'	110'
#10	100'	170'
#8	150'	270'
#6	240'	420'

ELECTRICAL GENERAL NOTES

- ELECTRICAL INSTALLATION MUST COMPLY WITH THE REQUIREMENTS OF THE LATEST EDITION OF THE NATIONAL ELECTRICAL CODE (NEC), NFPA, AND STATE AND LOCAL CODES.
- WORK MUST BE COORDINATED WITH ARCHITECTURAL, STRUCTURAL, AND MECHANICAL TRADES.
- ELECTRICAL EQUIPMENT AND WIRING MUST BE NEW AND UL LISTED UNLESS OTHERWISE NOTED.
- A SEPARATE GREEN GROUNDING CONDUCTOR MUST BE PROVIDED FOR EACH INDIVIDUAL CIRCUIT. METAL CONDUIT MUST BE GROUNDED BUT MUST NOT BE USED AS THE EQUIPMENT GROUNDING CONDUCTOR.
- VERIFY EXISTING CONDITIONS AND DIMENSIONS AND REPORT DISCREPANCIES TO THE OWNER'S REPRESENTATIVE. PROCEED WITH THE WORK ONLY AFTER THE DISCREPANCIES HAVE BEEN RESOLVED BY THE OWNER'S REPRESENTATIVE.
- CONDUCTORS MUST BE MINIMUM #12 AWG UNLESS NOTED OTHERWISE.
- CONDUIT MUST BE MINIMUM 3/4" UNLESS OTHERWISE NOTED.
- UNLESS OTHERWISE INDICATED, WIRE AND CONDUIT SIZE FOR EACH 20A 1P BRANCH CIRCUIT MUST BE 2 #12 + #12G, IN 3/4"C.
- A SEPARATE NEUTRAL CONDUCTOR MUST BE PROVIDED FOR EACH INDIVIDUAL 120V CIRCUIT.
- PROVIDE FIRE STOPPING FOR PENETRATIONS THROUGH FIRE RATED WALLS, CEILINGS, FLOORS, AND ROOF. COORDINATE WITH THE FIRE PROTECTION TRADE.

ELECTRICAL ABBREVIATIONS

A, AMP	AMPERE	MLO	MAIN LUG ONLY
AC	ALTERNATING CURRENT	NEMA	NATIONAL ELECTRICAL MANUFACTURERS ASSOCIATION
AFF	ABOVE FINISHED FLOOR	NFPA	NATIONAL FIRE PROTECTION ASSOCIATION
AIC	AMPERE INTERRUPTING CAPACITY	NO, #	NUMBER
AWG	AMERICAN WIRE GAUGE	OCC	OCCUPANCY
BKR	BREAKER	∅	PHASE
C	CONDUCTOR, CONDUIT	P	POLE
CB	CIRCUIT BREAKER	P/O	PART OF
CKT	CIRCUIT	R	RECEPTACLE LOAD TYPE FOR PANEL SCHEDULE
CU	COPPER	REC	RECEPTACLE
DWG	DRAWING	RGS	RIGID GALVANIZED STEEL
EMT	ELECTRICAL METALLIC TUBING	RM	ROOM
H	HEATING LOAD TYPE FOR PANEL SCHEDULE	RMC	RIGID METAL CONDUIT
KVA	KILO-VOLT-AMPERE	SW	SWITCH
KW	KILO-WATT	THHN	HEAT RESISTANT THERMOPLASTIC WIRE WITH NYLON JACKET
L	LIGHTING LOAD TYPE FOR PANEL SCHEDULE	THWN	MOISTURE & HEAT RESISTANT THERMOPLASTIC WIRE WITH NYLON JACKET
LC	LIGHTING CONTROL PANEL	TYP	TYPICAL
LED	LIGHT EMITTING DIODE	V	VOLT
LTG	LIGHTING	VA	VOLT AMPERE
M	MOTOR LOAD TYPE FOR PANEL SCHEDULE	W	WATT, WIRE
MAX	MAXIMUM	W/	WITH
MCB	MAIN CIRCUIT BREAKER	WP	WEATHERPROOF
MIN	MINIMUM		

LIGHTING FIXTURE SCHEDULE							
TYPE	DESCRIPTION	SOURCE (LUMENS)	VOLTS	W/VA	MOUNTING	NOTES	CATALOG NUMBER
A	8FT LINEAR DIRECT WALL-MOUNT	LED (2517)	120	36.8	SURFACE	1	FINELITE HP-2-WM-D-8-H-935-F-96LG-120-LGD18W

FIXTURE SCHEDULE NOTES:
1. COORDINATE MOUNTING TYPE WITH WALL TYPE.

BASIS OF DESIGN NOTE:
FIXTURE MANUFACTURER AND CATALOG NUMBERS ARE LISTED TO ESTABLISH QUALITY, PERFORMANCE, AND AESTHETICS. OTHER MANUFACTURERS ARE ACCEPTABLE IF THE PROPOSED LIGHT FIXTURES MEET THE SPECIFIED REQUIREMENTS.

NO.	DATE	DESCRIPTION	BY
REVISIONS			



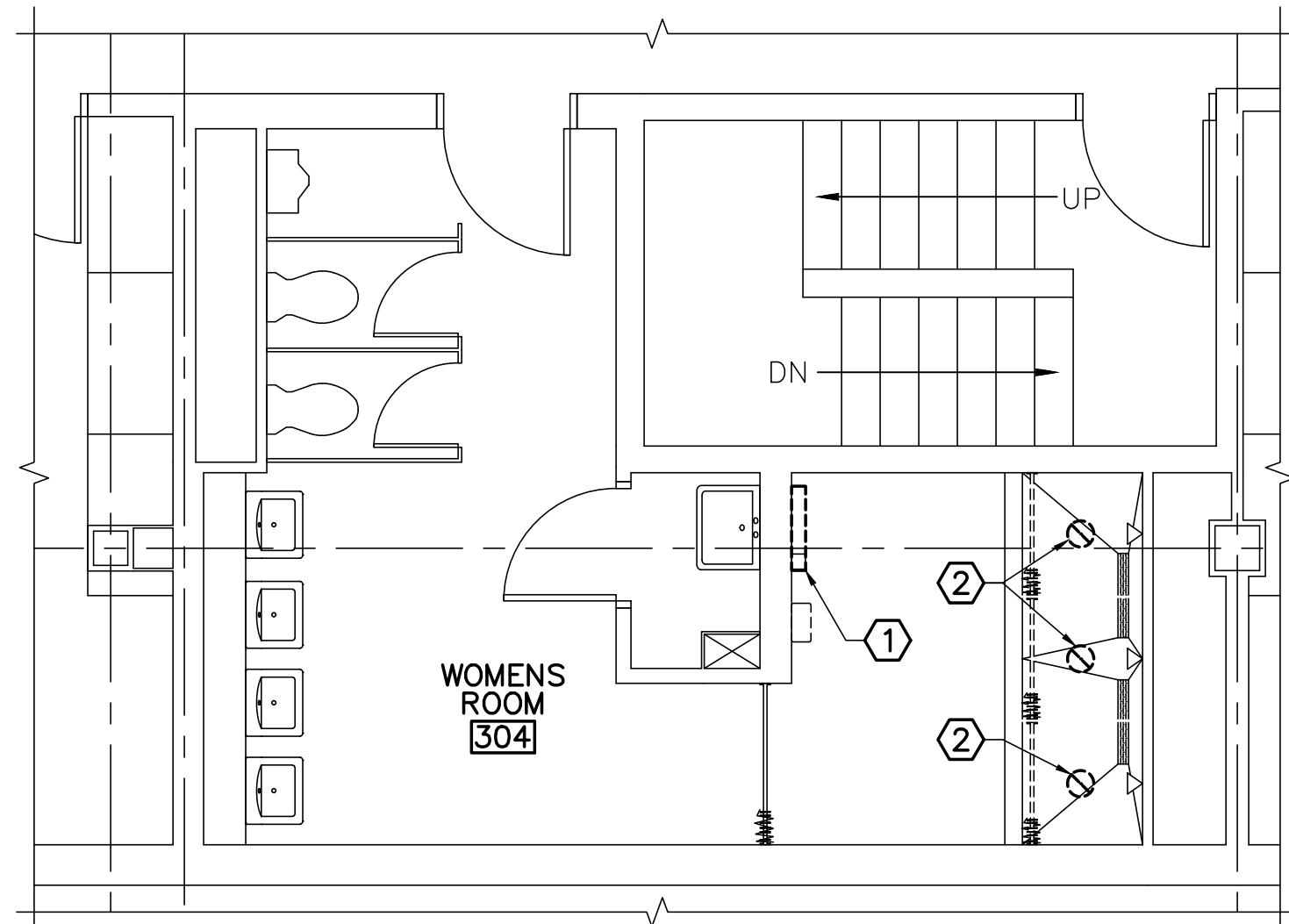
I&K BPD MHL
 22502.08
 DESIGNED BY:
 DRAWN BY:
 CHECKED BY:
 PROJECT:

**UNIVERSITY OF SOUTHERN MAINE
 GORHAM CAMPUS**
 37 College Ave, Gorham, ME

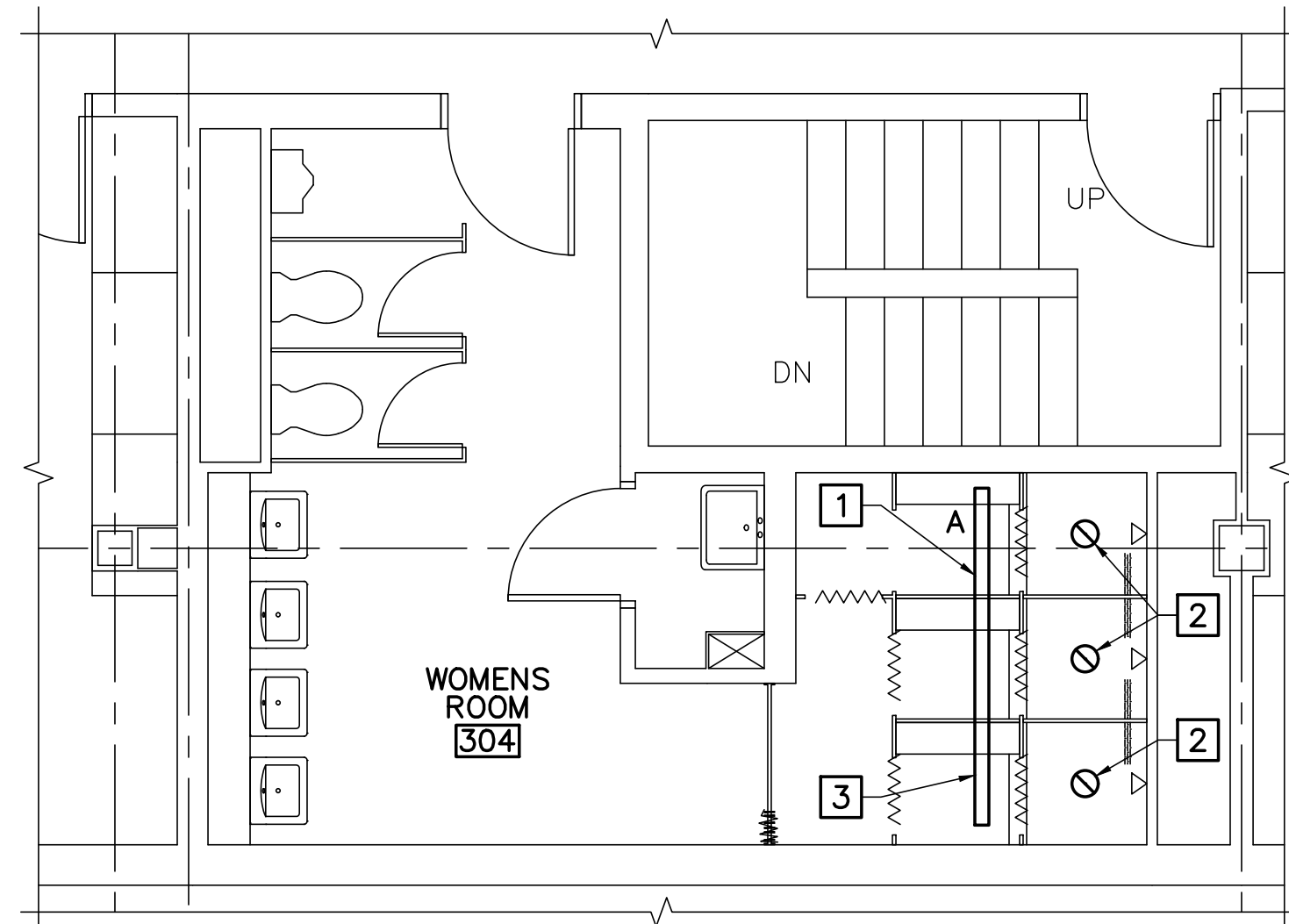
**ANDERSON HALL
 BATHROOM RENOVATIONS**
 37 College Ave, Gorham, ME

ELECTRICAL SYMBOLS, ABBREVIATIONS, GENERAL NOTES, AND SCHEDULE

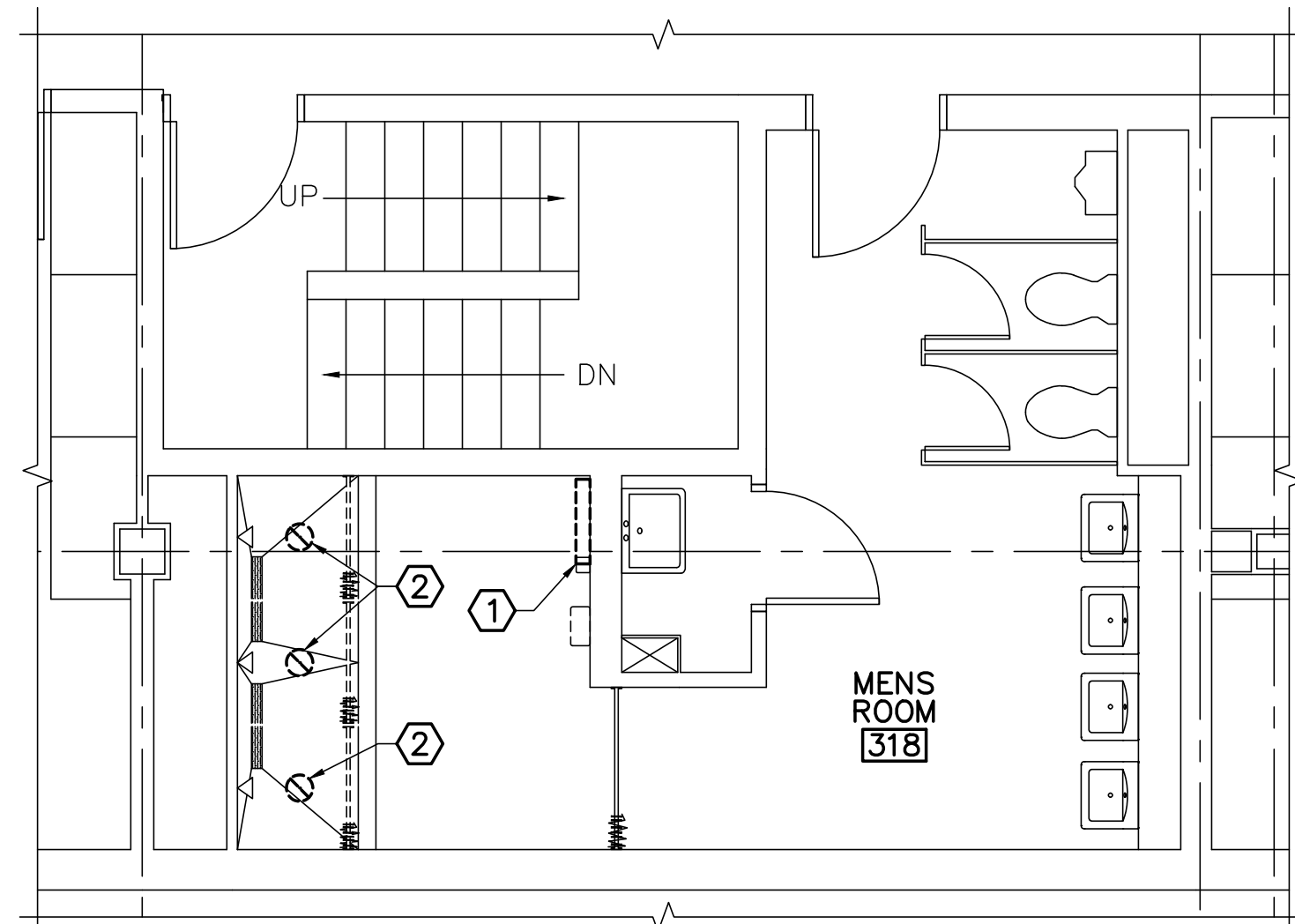
SCALE: AS NOTED
 DATE: 03-31-26
 DWG.: **E-001**
 SHEET: **5** OF **6**



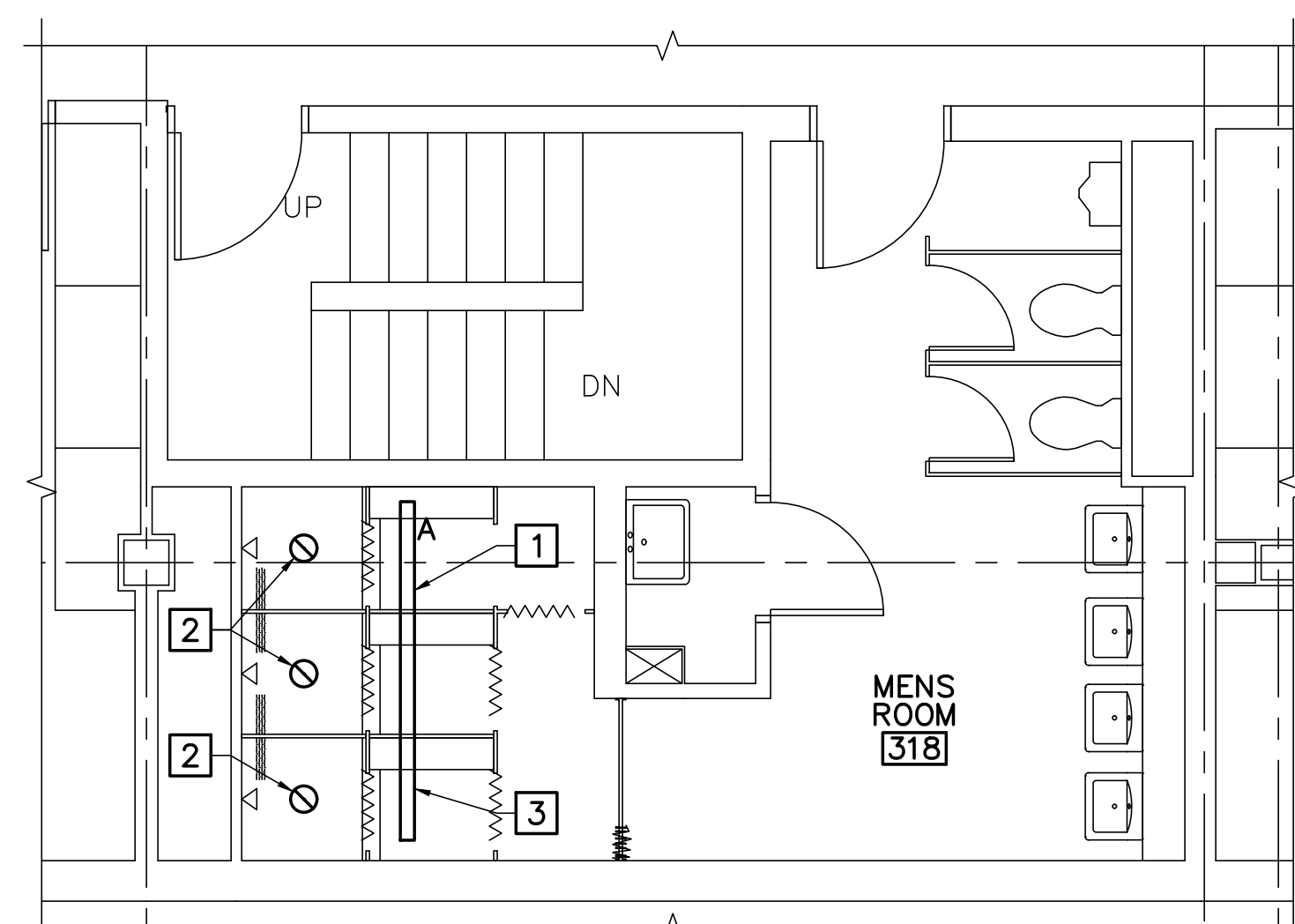
1 ANDERSON HALL WOMENS ROOM 304
1 ELECTRICAL REMOVALS PART PLAN
 E-101 SCALE: 1/4"=1'-0" (WOMENS ROOMS 404, 504 SIM)



2 ANDERSON HALL
2 WOMENS ROOM 304 LIGHTING PART PLAN
 E-101 SCALE: 1/4"=1'-0" (WOMENS ROOMS 404, 504 SIM)



3 ANDERSON HALL MENS ROOM 318
3 ELECTRICAL REMOVALS PART PLAN
 E-101 SCALE: 1/2"=1'-0" (MENS ROOMS 418, 518 SIM)



4 ANDERSON HALL
4 MENS ROOM 318 ELECTRICAL PART PLAN
 E-101 SCALE: 1/4"=1'-0" (MENS ROOMS 418, 518 SIM)

GENERAL NOTES

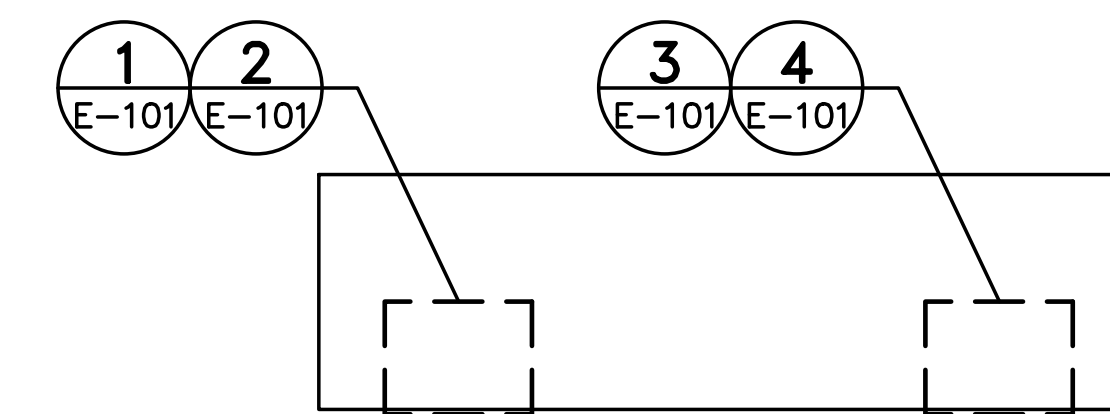
- EXISTING FIXTURES TO REMAIN UNLESS OTHERWISE INDICATED.
- CONNECT EMERGENCY FIXTURES TO LOCAL LIGHTING CIRCUITS AHEAD OF ANY SWITCHES, OCCUPANCY SENSORS, ETC.

REMOVALS KEYNOTES

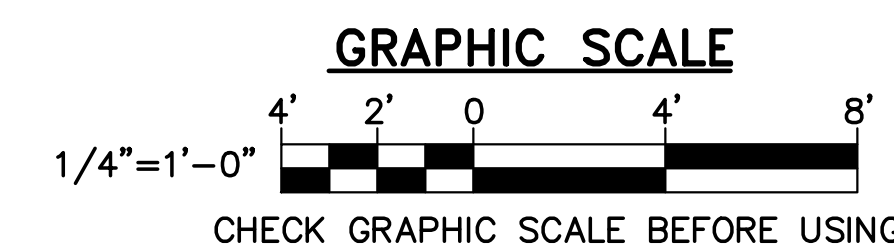
- REMOVE EXISTING FIXTURE AND ASSOCIATED WIRING AND CONDUIT. MAINTAIN CIRCUIT CONTINUITY FOR EXISTING-TO-REMAIN FIXTURES ON SAME BRANCH CIRCUIT.
- REMOVE AND SALVAGE EXISTING FIXTURE. EXISTING WIRING AND CONDUIT MUST REMAIN FOR REUSE. PROTECT EXISTING WIRING AND CONDUIT DURING CONSTRUCTION.

KEYNOTES

- SURFACE MOUNT FIXTURE ON VERTICAL FACE OF SOFFIT. CONNECT TO EXISTING SHOWER LIGHTING CIRCUIT.
- INSTALL SALVAGED FIXTURE. RE-USE EXISTING WIRING AND CONDUIT.
- PROVIDE INTEGRAL EMERGENCY BACKUP BATTERY FOR INDICATED TWO FOOT SECTION OF CONTINUOUS LINEAR LIGHT FIXTURE.



KEY PLAN



NO.	DATE	DESCRIPTION	BY
REVISIONS			



ICK
 PSW
 MHL
 22502.08
 DESIGNED BY:
 DRAWN BY:
 CHECKED BY:
 PROJECT:

UNIVERSITY OF SOUTHERN MAINE
GORHAM CAMPUS
 37 College Ave, Gorham, ME

ANDERSON HALL
BATHROOM RENOVATIONS
 37 College Ave, Gorham, ME

ANDERSON HALL
BATHROOMS
ELECTRICAL
PART
PLANS

SCALE: AS NOTED
 DATE: 03-31-26

DWG.: **E-101**

SHEET: **6** OF **6**