

**STATE GENERAL
FUND SUPPORT
OF
MAINE EDUCATION
2005/2006**



*Maine's
Public
Universities*

UNIVERSITY OF MAINE SYSTEM

Office of Finance and Treasurer

SEPTEMBER 2005

STATE GENERAL FUND SUPPORT OF MAINE EDUCATION

2005/2006

This report provides a historical review of State General Fund support of Maine education.

	<u>Page</u>
Highlights	1
University of Maine System Appropriation	2 - 3
Education Appropriation as a Percentage of General Fund Revenue	4 - 5
Growth in Education Appropriations and General Fund Revenue	6 - 7
UM System and Elementary & Secondary Education Funding as a Percentage of State Funding for All Education	8
Supporting Tables	9 - 20

STATE GENERAL FUND SUPPORT OF MAINE EDUCATION

HIGHLIGHTS

The **University of Maine System's FY2006 E&G base appropriation** is \$183,121,418, and the FY2007 E&G base appropriation will be \$183,121,418.

The **E&G Appropriation** increased from \$17,058,403 in 1967/68 to \$183,121,418 in 2006/07, an average annual increase of 6.3%. In the current biennium, the E&G appropriation increased by 1.8% in 2005/06 and increased by 0.0% in 2006/07.

The **FY2006 appropriation** excludes (1) \$500,000 for the Digital Library from the telecommunications education access fund, (2) \$50,000 for the Maine Black Bears Scholarship Fund (3) \$137,015 for the UMS Scholarship Fund Plates, (4) \$358,342 for the UMS Scholarship Fund Racino, and (5) \$100,000 in one-time funding for the UMA reaccreditation as a 4-year college. It includes (1) the restoration of the \$150,000 deappropriation for the Maine Patent Program and (2) \$3,000,000 in additional on-going funds.

The **FY2007 appropriation** excludes (1) \$500,000 for the Digital Library from the telecommunications education access fund, (2) \$50,000 for the Maine Black Bears Scholarship Fund, (3) \$140,440 for the UMS Scholarship Fund Plates, and (4) \$1,648,920 for the UMS Scholarship Fund Racino. It includes no new on-going funds.

The E&G appropriation as a percentage of the State's general fund revenue has ranged from a high of 15.2% in 1967/68 to a projected low of 6.3% in 2006/07, and is projected to be at 6.7% for 2005/06.

As a **percentage of the State funds devoted to all education**, the E&G funding for the University of Maine System reached a high of 28.1% in 1970/71 and is projected to reach a low of 13.3% for 2006/07 and is projected to be at 13.7% for 2005/06.

Undedicated State General Fund revenues are projected to reach a level of \$2,899,720,412 in fiscal year 2007. This represents an average annual growth rate of 8.7% since 1967/68.

Public elementary and secondary education appropriations have increased from \$42,240,437 in 1967/68 to \$1,127,969,231 in 2006/07, an average annual increase of 8.8%. Appropriations for public elementary and secondary education as a percentage of general fund revenues have ranged from a low of 30.6% in 1972/73 to a high of 44.7% in 1989/90, and is projected to be 39.6% and 38.9% in FY2006 and FY2007 respectively.

Elementary and secondary education receives the largest share of state funds appropriated for education. This share has varied from a low of 67.0% in 1970/71 to a projected high of 81.9% in 2006/07, and is projected to be at 81.4% for 2005/06.

**UNIVERSITY OF MAINE SYSTEM APPROPRIATION
(122ND LEGISLATURE)**

	<u>Base Appropriation¹</u>	<u>One-Time Appropriation</u>	<u>Total</u>
FY2005 Appropriation	\$179,971,418	\$0	\$179,971,418
FY2006 Appropriation			
<u>First Regular Session</u>			
Part I ²	6,000,000		
Restoration of FY2005 Maine Patent Program Deappropriation ²	150,000		
Reduction in Funding ²	(5,000,000)		
Additional On-Going Funds ²	3,000,000		
UMA Reaccreditation as a 4-Year College ²	0	100,000	
Reduction in Funding ³	(1,000,000)		
Total	<u>3,150,000</u>	<u>100,000</u>	
Total Change	<u>3,150,000</u>	<u>100,000</u>	<u>3,250,000</u>
FY2006 Appropriation	\$183,121,418	\$100,000	\$183,221,418

¹ Excludes \$500,000 for the Digital Library from the telecommunications education access fund (Chapter 12 Public Law signed 3/31/2005), \$50,000 for the Maine Black Bears Scholarship Fund (Chapter 12 Public Law signed 3/31/2005), \$137,015 for the UMS Scholarship Fund Plates (Chapter 109 Public Law signed 5/13/2005), and \$358,342 for the UMS Scholarship Fund Racino (Chapter 386 Public Law signed 6/13/2005).

² Chapter 12 Public Law, signed March 31, 2005.

³ Chapter 457 Public Law, signed June 24, 2005

**UNIVERSITY OF MAINE SYSTEM APPROPRIATION
(122ND LEGISLATURE)**

	Base Appropriation ¹	One-Time Appropriation	Total
FY2006 Appropriation	\$183,121,418	\$100,000	\$183,221,418
FY2007 Appropriation			
<u>First Regular Session</u>			
Part I ²	8,600,000		
Reduction in Funding ²	(8,600,000)		
UMA Reaccreditation as a 4-Year College ²	0	0	
Total	0	0	
Total Change	0	0	0
FY2007 Appropriation	\$183,121,418	\$0	\$183,121,418

¹ Excludes \$500,000 for the Digital Library from the telecommunications education access fund (Chapter 12 Public Law signed 3/31/2005), \$50,000 for the Maine Black Bears Scholarship Fund (Chapter 12 Public Law signed 3/31/2005), \$140,440 for the UMS Scholarship Fund Plates (Chapter 109 Public Law signed 5/13/2005), and \$1,648,920 for the UMS Scholarship Fund Racino (Chapter 386 Public Law signed 6/13/2005).

² Chapter 12 Public Law, signed March 31, 2005.

³ Chapter 457 Public Law, signed June 24, 2005

STATE GENERAL FUND SUPPORT OF MAINE EDUCATION
EDUCATION APPROPRIATIONS AS A PERCENTAGE OF UNDEDICATED STATE GENERAL FUND REVENUE

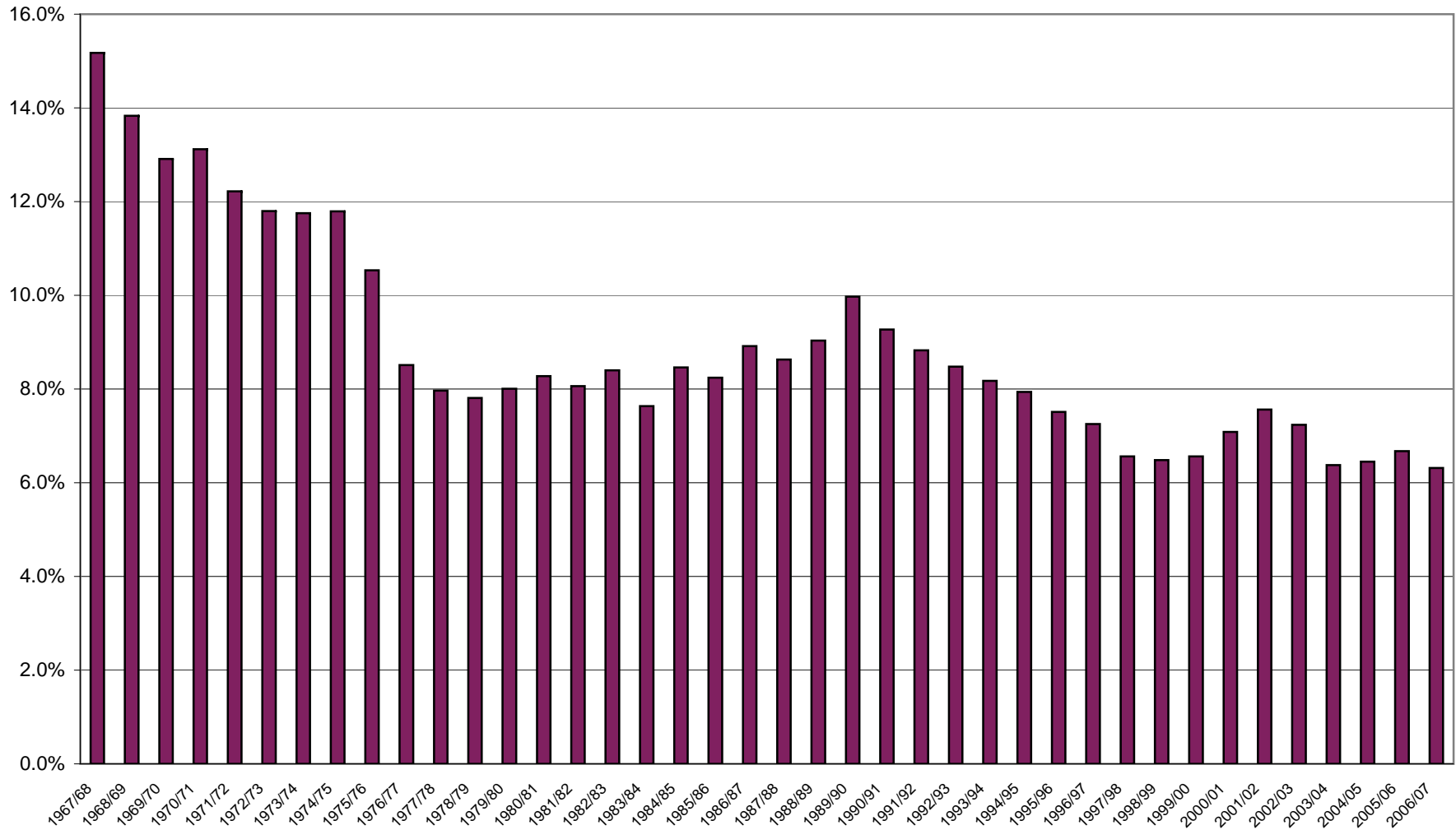
	Undedicated State General Fund Revenues	Public Elementary- Secondary Education		University of Maine System E&G Appropriation		Total Higher Education		Total All Education (a)	
1967/68	\$112,432,481	\$42,240,437	37.6%	\$17,058,403	15.2%	\$19,954,650	17.7%	\$62,195,087	55.3%
1968/69	123,455,001	43,204,269	35.0	17,074,425	13.8	19,972,059	16.2	63,176,328	51.2
1969/70	167,298,889	53,909,290	32.2	21,597,639	12.9	25,566,687	15.3	79,475,977	47.5
1970/71	184,886,973	57,859,943	31.3	24,251,105	13.1	28,495,505	15.4	86,355,448	46.7
1971/72	209,913,425	70,286,895	33.5	25,645,704	12.2	30,636,973	14.6	100,923,868	48.1
1972/73	233,349,319	71,379,029	30.6	27,528,392	11.8	32,827,507	14.1	104,206,536	44.7
1973/74	279,394,623	92,946,743	33.3	32,843,102	11.8	40,380,122	14.5	133,326,865	47.7
1974/75	308,357,910	120,612,763	39.1	36,368,544	11.8	44,480,336	14.4	165,093,099	53.5
1975/76	346,187,656	138,555,126	40.0	36,468,544	10.5	45,275,873	13.1	183,830,999	53.1
1976/77	395,701,007	169,221,030	42.8	33,681,690	8.5	42,566,937	10.8	211,787,967	53.5
1977/78	451,934,603	182,700,966	40.4	35,990,408	8.0	45,910,657	10.2	228,611,623	50.6
1978/79	483,350,913	200,131,270	41.4	37,754,928	7.8	49,046,850	10.1	249,178,120	51.6
1979/80	536,314,822	222,040,509	41.4	42,925,000	8.0	57,336,113	10.7	279,376,622	52.1
1980/81	583,474,200	235,314,182	40.3	48,296,000	8.3	62,622,341	10.7	297,936,523	51.1
1981/82	637,499,912	261,473,191	41.0	51,391,000	8.1	66,940,452	10.5	328,413,643	51.5
1982/83	675,024,649	280,749,257	41.6	56,704,400	8.4	73,196,388	10.8	353,945,645	52.4
1983/84	772,402,631	307,443,448	39.8	58,972,576	7.6	76,743,061	9.9	384,186,509	49.7
1984/85	845,739,399	331,500,889	39.2	71,564,188	8.5	91,310,982	10.8	422,811,871	50.0
1985/86	945,891,458	392,403,531	41.5	77,975,556	8.2	100,989,279	10.7	493,392,810	52.2
1986/87	1,114,868,905	428,373,327	38.4	99,423,713	8.9	125,700,741	11.3	554,074,068	49.7
1987/88	1,291,702,852	483,829,407	37.5	111,459,124	8.6	141,411,836	10.9	625,241,243	48.4
1988/89	1,430,615,011	543,850,580	38.0	129,250,492	9.0	162,482,081	11.4	706,332,661	49.4
1989/90	1,379,458,165	616,069,588	44.7	137,589,402	10.0	173,534,176	12.6	789,603,764	57.2
1990/91	1,424,084,700	569,554,957	40.0	132,046,363	9.3	172,054,233	12.1	741,609,190	52.1
1991/92	1,512,463,098	619,770,956	41.0	133,507,172	8.8	173,002,715	11.4	792,773,671	52.4
1992/93	1,561,402,638	677,511,154	43.4	132,375,585	8.5	172,151,421	11.0	849,662,575	54.4
1993/94	1,623,888,486	630,193,696	38.8	132,725,585	8.2	172,429,496	10.6	802,623,192	49.4
1994/95	1,671,736,430	674,556,557	40.4	132,725,585	7.9	174,523,228	10.4	849,079,785	50.8
1995/96	1,766,400,760	689,374,772	39.0	132,642,841	7.5	178,952,440	10.1	868,327,212	49.2
1996/97	1,863,086,300	716,684,199	38.5	135,103,698	7.3	182,383,072	9.8	899,067,271	48.3
1997/98	2,111,860,005	747,954,664	35.4	138,565,672	6.6	186,111,368	8.8	934,066,032	44.2
1998/99	2,259,718,302	816,499,840	36.1	146,452,445	6.5	199,148,681	8.8	1,015,648,521	44.9
1999/00	2,395,216,806	848,900,343	35.4	157,156,828	6.6	213,023,884	8.9	1,061,924,227	44.3
2000/01	2,390,628,351	930,648,867	38.9	169,310,510	7.1	228,916,713	9.6	1,159,565,580	48.5
2001/02	2,331,660,564	926,855,002	39.8	176,343,272	7.6	239,002,169	10.3	1,165,857,171	50.0
2002/03	2,394,690,190	941,783,827	39.3	173,336,418	7.2	236,389,879	9.9	1,178,173,706	49.2
2003/04	2,683,539,557	948,917,533	35.4	171,121,418	6.4	233,694,636	8.7	1,182,612,169	44.1
2004/05	2,790,845,053	975,800,162	35.0	179,971,418	6.4	242,971,471	8.7	1,218,771,633	43.7
2005/06	2,743,294,742	1,085,328,582	39.6	183,121,418	6.7	247,943,000	9.0	1,333,271,582	48.6
2006/07	2,899,720,412	1,127,969,231	38.9	183,121,418	6.3	249,184,399	8.6	1,377,153,630	47.5

(a) Includes all higher education and public elementary and secondary education.

NOTE: Percentages may not add to total due to rounding.

OFT: September 5, 2005 Z65(231)

University of Maine System E&G Appropriation As a % of State General Fund Revenue



OFT: 9/5/2005 Z65(231)

**STATE GENERAL FUND SUPPORT OF MAINE EDUCATION
EDUCATION APPROPRIATIONS AS A PERCENTAGE OF UNDEDICATED STATE GENERAL FUND REVENUE**

	Undedicated State General Fund Revenue	Maine Community College System		Maine Maritime Academy		State Student Financial Aid Programs	
1967/68	\$112,432,481	\$1,857,796	1.7%	\$526,500	0.5%	\$150,426	0.1%
1968/69	123,455,001	1,889,892	1.5	471,500	0.4	164,420	0.1
1969/70	167,298,889	2,606,724	1.6	697,300	0.4	195,200	0.1
1970/71	184,886,973	2,721,232	1.5	706,800	0.4	209,450	0.1
1971/72	209,913,425	3,129,529	1.5	900,000	0.4	337,450	0.2
1972/73	233,349,319	3,149,096	1.3	1,005,000	0.4	565,450	0.2
1973/74	279,394,623	4,557,826	1.6	1,211,238	0.4	807,016	0.3
1974/75	308,357,910	4,685,519	1.5	1,449,962	0.5	992,939	0.3
1975/76	346,187,656	5,431,910	1.6	1,477,049	0.4	964,998	0.3
1976/77	395,701,007	5,517,289	1.4	1,613,063	0.4	959,860	0.2
1977/78	451,934,603	5,789,074	1.3	1,813,137	0.4	1,468,350	0.3
1978/79	483,350,913	5,857,347	1.2	2,173,793	0.4	2,130,000	0.4
1979/80	536,314,822	8,617,800	1.6	2,351,436	0.4	2,476,827	0.5
1980/81	583,474,200	8,071,820	1.4	2,398,550	0.4	2,812,871	0.5
1981/82	637,499,912	9,974,900	1.6	2,916,550	0.5	1,562,024	0.2
1982/83	675,024,649	10,696,579	1.6	2,834,550	0.4	1,744,881	0.3
1983/84	772,402,631	11,902,509	1.5	2,987,932	0.4	1,615,427	0.2
1984/85	845,739,399	12,659,047	1.5	3,378,124	0.4	2,394,421	0.3
1985/86	945,891,458	15,143,805	1.6	3,645,870	0.4	2,750,454	0.3
1986/87	1,114,868,905	16,693,676	1.5	4,133,505	0.4	3,847,428	0.3
1987/88	1,291,702,852	19,398,113	1.5	4,591,224	0.4	4,167,883	0.3
1988/89	1,430,615,011	21,419,654	1.5	5,307,814	0.4	4,659,114	0.3
1989/90	1,379,458,165	24,061,695	1.7	6,343,794	0.5	3,356,801	0.2
1990/91	1,424,084,700	22,933,378	1.6	6,452,665	0.5	8,256,212	0.6
1991/92	1,512,463,098	23,111,053	1.5	6,497,320	0.4	7,773,455	0.5
1992/93	1,561,402,638	22,992,497	1.5	6,372,200	0.4	8,180,982	0.5
1993/94	1,623,888,486	24,492,497	1.5	6,472,200	0.4	6,509,057	0.4
1994/95	1,671,736,430	26,142,497	1.6	6,472,200	0.4	6,952,789	0.4
1995/96	1,766,400,760	28,770,504	1.6	6,504,561	0.4	8,804,377	0.5
1996/97	1,863,086,300	29,674,910	1.6	6,569,930	0.4	8,804,377	0.5
1997/98	2,111,860,005	30,125,533	1.4	6,635,629	0.3	8,554,377	0.4
1998/99	2,259,718,302	31,130,860	1.4	6,768,342	0.3	12,566,877	0.6
1999/00	2,395,216,806	33,564,786	1.4	7,174,443	0.3	12,848,607	0.5
2000/01	2,390,628,351	36,750,629	1.5	7,389,677	0.3	13,136,534	0.5
2001/02	2,331,660,564	39,808,081	1.7	7,626,385	0.3	12,833,988	0.6
2002/03	2,394,690,190	40,429,622	1.7	7,506,379	0.3	12,816,241	0.5
2003/04	2,683,539,557	40,139,117	1.5	7,719,938	0.3	12,531,454	0.5
2004/05	2,790,845,053	41,472,054	1.5	7,457,281	0.3	11,790,580	0.4
2005/06	2,743,294,742	42,216,033	1.5	7,548,820	0.3	12,816,101	0.5
2006/07	2,899,720,412	43,313,617	1.5	7,737,547	0.3	12,761,117	0.4

STATE GENERAL FUND SUPPORT OF MAINE EDUCATION

**GROWTH IN STATE APPROPRIATIONS FOR THE UNIVERSITY OF MAINE SYSTEM,
ELEMENTARY & SECONDARY EDUCATION, AND
UNDEDICATED STATE GENERAL FUND REVENUE**

	University of Maine System E&G Appropriation	Annual % Increase	State Appropriation for Public Elementary & Secondary Education	Annual % Increase	State General Fund Revenue	Annual % Increase
1967/68	\$17,058,403	61.1	\$42,240,437	22.1	\$112,432,481	15.3
1968/69	17,074,425	0.1	43,204,269	2.3	123,455,001	9.8
1969/70	21,597,639	26.5	53,909,290	24.8	167,298,889	35.5
1970/71	24,251,105	12.3	57,859,943	7.3	184,886,973	10.5
1971/72	25,645,704	5.8	70,286,895	21.5	209,913,425	13.5
1972/73	27,528,392	7.3	71,379,029	1.6	233,349,319	11.2
1973/74	32,843,102	19.3	92,946,743	30.2	279,394,623	19.7
1974/75	36,368,544	10.7	120,612,763	29.8	308,357,910	10.4
1975/76	36,468,544	0.3	138,555,126	14.9	346,187,656	12.3
1976/77	33,681,690	(7.6)	169,221,030	22.1	395,701,007	14.3
1977/78	35,990,408	6.9	182,700,966	8.0	451,934,603	14.2
1978/79	37,754,928	4.9	200,131,270	9.5	483,350,913	7.0
1979/80	42,925,000	13.7	222,040,509	10.9	536,314,822	11.0
1980/81	48,296,000	12.5	235,314,182	6.0	583,474,200	8.8
1981/82	51,391,000	6.4	261,473,191	11.1	637,499,912	9.3
1982/83	56,704,400	10.3	280,749,257	7.4	675,024,649	5.9
1983/84	58,972,576	4.0	307,443,448	9.5	772,402,631	14.4
1984/85	71,564,188	21.4	331,500,889	7.8	845,739,399	9.5
1985/86	77,975,556	9.0	392,403,531	18.4	945,891,458	11.8
1986/87	99,423,713	27.5	428,373,327	9.2	1,114,868,905	17.9
1987/88	111,459,124	12.1	483,829,407	12.9	1,291,702,852	15.9
1988/89	129,250,492	16.0	543,850,580	12.4	1,430,615,011	10.8
1989/90	137,589,402	6.5	616,069,588	13.3	1,379,458,165	(3.6)
1990/91	132,046,363	(4.0)	569,554,957	(7.6)	1,424,084,700	3.2
1991/92	133,507,172	1.1	619,770,956	8.8	1,512,463,098	6.2
1992/93	132,375,585	(0.8)	677,511,154	9.3	1,561,402,638	3.2
1993/94	132,725,585	0.3	630,193,696	(7.0)	1,623,888,486	4.0
1994/95	132,725,585	0.0	674,556,557	7.0	1,671,736,430	2.9
1995/96	132,642,841	(0.1)	689,374,772	2.2	1,766,400,760	5.7
1996/97	135,103,698	1.9	716,684,199	4.0	1,863,086,300	5.5
1997/98	138,565,672	2.6	747,954,664	4.4	2,111,860,005	13.4
1998/99	146,452,445	5.7	816,499,840	9.2	2,259,718,302	7.0
1999/00	157,156,828	7.3	848,900,343	4.0	2,395,216,806	6.0
2000/01	169,310,510	7.7	930,648,867	9.6	2,390,628,351	(0.2)
2001/02	176,343,272	4.2	926,855,002	(0.4)	2,331,660,564	(2.5)
2002/03	173,336,418	(1.7)	941,783,827	1.6	2,394,690,190	2.7
2003/04	171,121,418	(1.3)	948,917,533	0.8	2,683,539,557	12.1
2004/05	179,971,418	5.2	975,800,162	2.8	2,790,845,053	4.0
2005/06	183,121,418	1.8	1,085,328,582	11.2	2,743,294,742	(1.7)
2006/07	183,121,418	0.0	1,127,969,231	3.9	2,899,720,412	5.7

**AVERAGE ANNUAL % INCREASE
SINCE 1967/68**

6.3

8.8

8.7

**GROWTH IN STATE APPROPRIATIONS FOR THE MAINE COMMUNITY COLLEGE
SYSTEM, MAINE MARITIME ACADEMY, AND FOR STUDENT FINANCIAL AID
PROGRAMS**

	<u>Maine Community College System</u>	<u>Annual % Increase</u>	<u>Maine Maritime Academy</u>	<u>Annual % Increase</u>	<u>State Student Financial Aid Programs</u>	<u>Annual % Increase</u>
1967/68	\$1,857,796	116.4	\$526,500	57.4	\$150,426	17.4
1968/69	1,889,892	1.7	471,500	(10.4)	164,420	9.3
1969/70	2,606,724	37.9	697,300	47.9	195,200	18.7
1970/71	2,721,232	4.4	706,800	1.4	209,450	7.3
1971/72	3,129,529	15.0	900,000	27.3	337,450	61.1
1972/73	3,149,096	0.6	1,005,000	11.7	565,450	67.6
1973/74	4,557,826	44.7	1,211,238	20.5	807,016	42.7
1974/75	4,685,519	2.8	1,449,962	19.7	992,939	23.0
1975/76	5,431,910	15.9	1,477,049	1.9	964,998	(2.8)
1976/77	5,517,289	1.6	1,613,063	9.2	959,860	(0.5)
1977/78	5,789,074	4.9	1,813,137	12.4	1,468,350	53.0
1978/79	5,857,347	1.2	2,173,793	19.9	2,130,000	45.1
1979/80	8,617,800	47.1	2,351,436	8.2	2,476,827	16.3
1980/81	8,071,820	(6.3)	2,398,550	2.0	2,812,871	13.6
1981/82	9,974,900	23.6	2,916,550	21.6	1,562,024	(44.5)
1982/83	10,696,579	7.2	2,834,550	(2.8)	1,744,881	11.7
1983/84	11,902,509	11.3	2,987,932	5.4	1,615,427	(7.4)
1984/85	12,659,047	6.4	3,378,124	13.1	2,394,421	48.2
1985/86	15,143,805	19.6	3,645,870	7.9	2,750,454	14.9
1986/87	16,693,676	10.2	4,133,505	13.4	3,847,428	39.9
1987/88	19,398,113	16.2	4,591,224	11.1	4,167,883	8.3
1988/89	21,419,654	10.4	5,307,814	15.6	4,659,114	11.8
1989/90	24,061,695	12.3	6,343,794	19.5	3,356,801	(28.0)
1990/91	22,933,378	(4.7)	6,452,665	1.7	8,256,212	146.0
1991/92	23,111,053	0.8	6,497,320	0.7	7,773,455	(5.8)
1992/93	22,992,497	(0.5)	6,372,200	(1.9)	8,180,982	5.2
1993/94	24,492,497	6.5	6,472,200	1.6	6,509,057	(20.4)
1994/95	26,142,497	6.7	6,472,200	0.0	6,952,789	6.8
1995/96	28,770,504	10.1	6,504,561	0.5	8,804,377	26.6
1996/97	29,674,910	3.1	6,569,930	1.0	8,804,377	0.0
1997/98	30,125,533	1.5	6,635,629	1.0	8,554,377	(2.8)
1998/99	31,130,860	3.3	6,768,342	2.0	12,566,877	46.9
1999/00	33,564,786	7.8	7,174,443	6.0	12,848,607	2.2
2000/01	36,750,629	9.5	7,389,677	3.0	13,136,534	2.2
2001/02	39,808,081	8.3	7,626,385	3.2	12,833,988	(2.3)
2002/03	40,429,622	1.6	7,506,379	(1.6)	12,816,241	(0.1)
2003/04	40,139,117	(0.7)	7,719,938	2.8	12,531,454	(2.2)
2004/05	41,472,054	3.3	7,457,281	(3.4)	11,790,580	(5.9)
2005/06	42,216,033	1.8	7,548,820	1.2	12,816,101	8.7
2006/07	43,313,617	2.6	7,737,547	2.5	12,761,117	(0.4)

**AVERAGE ANNUAL % INCREASE
SINCE 1967/68**

7.4

6.7

11.0

STATE GENERAL FUND SUPPORT OF MAINE EDUCATION

**UNIVERSITY OF MAINE SYSTEM E&G AND PUBLIC ELEMENTARY & SECONDARY
EDUCATION FUNDING AS A SHARE OF STATE FUNDING
FOR ALL EDUCATION**

	<u>State Appropriation For All Education</u>	<u>University of Maine System E&G Appropriation</u>	<u>University Funding as a % of State Funding for All Education</u>	<u>State Appropriation for Public Elementary & Secondary Education</u>	<u>Elementary & Secondary Education Funding as a % of Funding for All Education</u>
1967/68	\$62,195,087	\$17,058,403	27.4%	\$42,240,437	67.9%
1968/69	63,176,328	17,074,425	27.0	43,204,269	68.4
1969/70	79,475,977	21,597,639	27.2	53,909,290	67.8
1970/71	86,355,448	24,251,105	28.1	57,859,943	67.0
1971/72	100,923,868	25,645,704	25.4	70,286,895	69.6
1972/73	104,206,536	27,528,392	26.4	71,379,029	68.5
1973/74	133,326,865	32,843,102	24.6	92,946,743	69.7
1974/75	165,093,099	36,368,544	22.0	120,612,763	73.1
1975/76	183,830,999	36,468,544	19.8	138,555,126	75.4
1976/77	211,787,967	33,681,690	15.9	169,221,030	79.9
1977/78	228,611,623	35,990,408	15.7	182,700,966	79.9
1978/79	249,178,120	37,754,928	15.2	200,131,270	80.3
1979/80	279,376,622	42,925,000	15.4	222,040,509	79.5
1980/81	297,936,523	48,296,000	16.2	235,314,182	79.0
1981/82	328,413,643	51,391,000	15.6	261,473,191	79.6
1982/83	353,945,645	56,704,400	16.0	280,749,257	79.3
1983/84	384,186,509	58,972,576	15.3	307,443,448	80.0
1984/85	422,811,871	71,564,188	16.9	331,500,889	78.4
1985/86	493,392,810	77,975,556	15.8	392,403,531	79.5
1986/87	554,074,068	99,423,713	17.9	428,373,327	77.3
1987/88	625,241,243	111,459,124	17.8	483,829,407	77.4
1988/89	706,332,661	129,250,492	18.3	543,850,580	77.0
1989/90	789,603,764	137,589,402	17.4	616,069,588	78.0
1990/91	741,609,190	132,046,363	17.8	569,554,957	76.8
1991/92	792,773,671	133,507,172	16.8	619,770,956	78.2
1992/93	849,662,575	132,375,585	15.6	677,511,154	79.7
1993/94	802,623,192	132,725,585	16.5	630,193,696	78.5
1994/95	849,079,785	132,725,585	15.6	674,556,557	79.4
1995/96	868,327,212	132,642,841	15.3	689,374,772	79.4
1996/97	899,067,271	135,103,698	15.0	716,684,199	79.7
1997/98	934,066,032	138,565,672	14.8	747,954,664	80.1
1998/99	1,015,648,521	146,452,445	14.4	816,499,840	80.4
1999/00	1,061,924,227	157,156,828	14.8	848,900,343	79.9
2000/01	1,159,565,580	169,310,510	14.6	930,648,867	80.3
2001/02	1,165,857,171	176,343,272	15.1	926,855,002	79.5
2002/03	1,178,173,706	173,336,418	14.7	941,783,827	79.9
2003/04	1,182,612,169	171,121,418	14.5	948,917,533	80.2
2004/05	1,218,771,633	179,971,418	14.8	975,800,162	80.1
2005/06	1,333,271,582	183,121,418	13.7	1,085,328,582	81.4
2006/07	1,377,153,630	183,121,418	13.3	1,127,969,231	81.9

STATE GENERAL FUND SUPPORT OF MAINE EDUCATION
UNDEDICATED STATE GENERAL FUND REVENUE

	Undedicated General Fund Revenue	Federal Revenue Sharing (b)	Federal Anti-Cyclical Funds	Tuition & Fee and Auxiliary Enterprise Revenue (c)	Adjusted General Fund Revenue (a)
1962/63	\$66,640,462	0	0	(\$1,039,334)	\$65,601,128
1963/64	77,263,535	0	0	(1,119,944)	76,143,591
1964/65	85,190,857	0	0	(1,106,524)	84,084,333
1965/66	95,524,705	0	0	(1,287,124)	94,237,581
1966/67	99,025,110	0	0	(1,482,676)	97,542,434
1967/68	112,683,387	0	0	(250,906)	112,432,481
1968/69	123,766,230	0	0	(311,229)	123,455,001
1969/70	167,685,146	0	0	(386,257)	167,298,889
1970/71	185,288,585	0	0	(401,612)	184,886,973
1971/72	210,615,245	0	0	(701,820)	209,913,425
1972/73	234,312,496	0	0	(963,177)	233,349,319
1973/74	254,823,637	25,552,489	0	(981,503)	279,394,623
1974/75	294,987,321	14,604,688	0	(1,234,099)	308,357,910
1975/76	333,585,746 (d)	13,930,000	0	(1,328,090)	346,187,656
1976/77	383,446,553	13,712,919	20,714	(1,479,179)	395,701,007
1977/78	433,756,750	13,996,158	5,810,585	(1,628,890)	451,934,603
1978/79	470,490,030	14,001,756	471,777	(1,612,650)	483,350,913
1979/80	522,273,861	15,575,000	0	(1,534,039)	536,314,822
1980/81	578,954,080	6,558,821	0	(2,038,701)	583,474,200
1981/82	639,916,837	0	0	(2,416,925)	637,499,912
1982/83	677,506,114	0	0	(2,481,465)	675,024,649
1983/84	774,768,162	0	0	(2,365,531)	772,402,631
1984/85	848,218,341	0	0	(2,478,942)	845,739,399
1985/86	948,570,406	0	0	(2,678,948)	945,891,458
1986/87	1,117,804,252	0	0	(2,935,347)	1,114,868,905
1987/88 (e)	1,291,702,852	0	0	0	1,291,702,852
1988/89	1,430,615,011	0	0	0	1,430,615,011
1989/90	1,379,458,165	0	0	0	1,379,458,165
1990/91	1,424,084,700	0	0	0	1,424,084,700
1991/92	1,512,463,098	0	0	0	1,512,463,098
1992/93	1,561,402,638	0	0	0	1,561,402,638
1993/94	1,623,888,486	0	0	0	1,623,888,486
1994/95	1,671,736,430	0	0	0	1,671,736,430
1995/96	1,766,400,760	0	0	0	1,766,400,760
1996/97	1,863,086,300	0	0	0	1,863,086,300
1997/98	2,111,860,005	0	0	0	2,111,860,005
1998/99 (f)	2,259,718,302	0	0	0	2,259,718,302
1999/00	2,395,216,806	0	0	0	2,395,216,806
2000/01	2,390,628,351	0	0	0	2,390,628,351
2001/02	2,331,660,564	0	0	0	2,331,660,564
2002/03	2,394,690,190	0	0	0	2,394,690,190
2003/04	2,683,539,557	0	0	0	2,683,539,557
2004/05	2,790,845,053	0	0	0	2,790,845,053
2005/06 (g)	2,743,294,742	0	0	0	2,743,294,742
2006/07 (g)	2,899,720,412	0	0	0	2,899,720,412

(a) Revenue not restricted by statute. Not including Tuition, Fees, Auxiliary Enterprise revenue, etc. Includes Federal Revenue Sharing Funds which were made available to elementary and secondary education. Includes Federal Anti-Cyclical funds. Excludes local revenues earmarked for elementary and secondary education.

(b) Earmarked for elementary and secondary education.

(c) Funds generated by institutions of higher education are omitted to reflect only state-generated funds.

(d) Excludes \$115,078,309 in local revenues for elementary and secondary education.

(e) Effective 7/1/87 Maine Technical College System keeps its revenue (i.e., it doesn't go into the State General Fund) and receives a grant similar to UMS and Maine Maritime Academy.

(f) Includes \$22,595,032 collected from Sales and Use tax reserved pursuant to 36 MRSA §1811.

(g) Budget.

SUMMARY OF GENERAL FUND APPROPRIATIONS FOR MAINE EDUCATION (a)**I. UNIVERSITY OF MAINE SYSTEM (b)**

	E&G		Subtotal	Maine Public Broadcasting Network	Medical Education	University of Maine System Total
	Educational & General	Student Aid				
1962/63	\$5,734,814	\$0	\$5,734,814	\$50,972	\$0	\$5,785,786
1963/64	6,892,470	0	6,892,470	224,000	0	7,116,470
1964/65	7,359,005	0	7,359,005	298,000	0	7,657,005
1965/66	10,187,143	0	10,187,143	298,526	0	10,485,669
1966/67	10,586,006	0	10,586,006	352,485	0	10,938,491
1967/68	17,058,403	0	17,058,403	361,525	0	17,419,928
1968/69	17,074,425	0	17,074,425	371,822	0	17,446,247
1969/70	21,597,639	0	21,597,639	469,824	0	22,067,463
1970/71	24,251,105	0	24,251,105	531,918	75,000	24,858,023
1971/72	25,645,704	0	25,645,704	549,290	75,000	26,269,994
1972/73	27,528,392	0	27,528,392	579,569	0	28,107,961
1973/74	32,843,102	0	32,843,102	860,940	100,000	33,804,042
1974/75	36,368,544	0	36,368,544	883,372	100,000	37,351,916
1975/76	36,068,544	400,000	36,468,544	883,372	0	37,351,916
1976/77	32,981,690	700,000	33,681,690	795,035	0	34,476,725
1977/78	35,290,408	700,000	35,990,408	824,688	0	36,815,096
1978/79	37,054,928	700,000	37,754,928	855,782	0	38,610,710
1979/80	42,176,000	749,000	42,925,000	939,060	0	43,864,060
1980/81	47,494,570	801,430	48,296,000	1,015,978	0	49,311,978
1981/82	51,391,000	0	51,391,000	1,095,978	0	52,486,978
1982/83	56,704,400	0	56,704,400	1,215,978	0	57,920,378
1983/84	58,972,576	0	58,972,576	1,264,617	0	60,237,193
1984/85	71,564,188	0	71,564,188	1,315,202	0	72,879,390
1985/86	77,975,556	0	77,975,556	1,473,594	0	79,449,150
1986/87	99,423,713	0	99,423,713	1,602,419	0	101,026,132
1987/88	111,459,124	0	111,459,124	1,795,492	0	113,254,616
1988/89	129,250,492	0	129,250,492	1,845,007	0	131,095,499
1989/90	137,589,402	0	137,589,402	2,182,484	0	139,771,886
1990/91	132,046,363 (c)	0	132,046,363	2,365,615	0	134,411,978
1991/92	133,507,172 (d)	0	133,507,172	2,113,715 (f)	0	135,620,887
1992/93	132,375,585 (e)	0	132,375,585	0 (g)	0	132,375,585
1993/94	132,725,585 (h)	0	132,725,585	0	0	132,725,585
1994/95	132,725,585 (i)	0	132,725,585	0	0	132,725,585
1995/96	132,642,841	0	132,642,841	0	0	132,642,841
1996/97	135,103,698 (n)	0	135,103,698	0	0	135,103,698
1997/98	138,565,672 (j)	0	138,565,672	0	0	138,565,672
1998/99	146,452,445 (k)	0	146,452,445	0	0	146,452,445
1999/00	157,156,828 (l)	0	157,156,828	0	0	157,156,828
2000/01	169,310,510 (m)	0	169,310,510	0	0	169,310,510
2001/02	176,343,272 (o)	0	176,343,272	0	0	176,343,272
2002/03	173,336,418 (p)	0	173,336,418	0	0	173,336,418
2003/04	171,121,418 (q)	0	171,121,418	0	0	171,121,418
2004/05	179,971,418 (r)	0	179,971,418	0	0	179,971,418
2005/06	183,121,418 (s)	0	183,121,418	0	0	183,121,418
2006/07	183,121,418 (t)	0	183,121,418	0	0	183,121,418

SEE FOOTNOTE EXPLANATIONS ON PAGE 11.

SUMMARY OF GENERAL FUND APPROPRIATIONS FOR MAINE EDUCATION

FOOTNOTES TO PAGE 10

- (a) Includes only appropriations for operating expenses. Excludes funds generated by institutions of higher education, i.e., tuition, fees, auxiliary enterprise revenue, etc.
- (b) Seven-campus system and a Central Office. System was created in 1967 by an act of the Maine Legislature which merged the then existing University of Maine and the five State Teachers' Colleges. Appropriations for the State Teachers' Colleges are included under the University of Maine System for all years.
- (c) Excludes a \$11,622,335 receivable which is the deferred June 1991 allotment. This deferred amount is included in the FY93 appropriation.
- (d) Includes \$34,542 in salary & wage funds for MPBN.
- (e) Reflects a \$11,005,751 receivable which is the deferred June 1993 allotment. This deferred amount will be repaid over the next 5+ years starting with a \$2,000,000 payment in FY94.
- (f) Excludes \$34,542 in salary & wage funds from E&G.
- (g) Effective July 1, 1992 MPBN was no longer part of the University as it merged with WPBC and became a separate corporation.
- (h) Includes \$2,000,000 which is to be applied to the repayment of the receivable created by the deferral of the June 1993 allotment.
- (i) Includes \$1,000,000 that was returned to the State to balance the State's budget.
- (j) Includes one-time \$250,000 appropriation for UMA and one-time \$47,400 appropriation for UM Franco-American Center, and excludes one-time \$100,000 appropriation to assist UMFK in constructing and relocating a facility for forestry and environmental programs.
- (k) Includes \$4,000,000 for Research and Development (Maine Economic Development Strategy).
- (l) Excludes one-time appropriations of: \$3,500,000 for Muskie School at USM, \$1,200,000 for Northern Maine Health Initiative at UMFK, \$200,000 for Strategic Technology Initiative in the Katahdin region, and \$160,000 for Historical Atlas of Maine Project at UM. Reflects deappropriation of \$75,000 to offset funding for the Education Research Institute. Also excludes the transfer of \$270,250 to the University of Maine System for the Maine Community Policing Institute at UMA.
- (m) Reflects deappropriation of \$75,000 to offset funding for the Education Research Institute. Also excludes one-time appropriations of \$1 million for matching funds for Osher scholarships, \$250,000 for the UMS Center at Calais, \$9,000,000 for Aubert Hall, \$3,500,000 for Lewiston/Auburn Campus, \$2,000,000 for UMS Center at Houlton, \$1,000,000 for Technical Center at UMFK, and \$1,500,000 for University College of Bangor. It also excludes the transfer of \$500 to the University of Maine System for the Maine Patent program at USM and the transfer of \$375,000 to the University of Maine System for the Maine Community Policing Institute at UMA.
- (n) Excludes one-time \$350,000 appropriation for UM Composite Wood Facility.
- (o) Excludes the one-time appropriation of \$120,000 for the Western Maine University & Technical College Center, the one-time appropriation of \$75,000 for the Lewiston/Auburn College Teachers for Elementary and Middle Schools Project, and excludes the impact of the one-time deappropriation of \$75,000 for the Maine Patent Program that was earmarked for the L/A College Teachers for Elementary and Middle Schools Project. Also excludes the transfer of \$100,000 to the University of Maine System for the Maine Community Policing Institute at UMA. Also excludes \$500,000 for the Digital Library from the telecommunications education access fund, Chapter 522 Public Law, signed March 12, 2002.
- (p) Excludes \$400,000 to be transferred from the Maine Community Policing Institute Surcharge Fund to UMS for the Maine Community Policing Institute at UMA (Chapter 358 Public Law, signed 6/4/01 (\$50,000) and Chapter 559 Public Law, signed 3/25/02 (\$350,000)). Also excludes \$500,000 for the Digital Library from the telecommunications education access fund.
- (q) Excludes \$446,137 for the Maine Community Policing Institute at UMA that has been transferred to the Judicial Department, \$510,000 for the Digital Library from the telecommunications education access fund, and \$11,000 for the Maine Black Bears Scholarship Fund. Excludes \$475,000 in one-time matching funds for the Osher Scholarship gift and \$1,000,000 in one-time funds to reduce in-state tuition.
- (r) Excludes \$455,060 for the Maine Community Policing Institute at UMA that has been transferred to the Judicial Department, \$520,200 for the Digital Library from the telecommunications education access fund, and \$12,950 for the Maine Black Bears Scholarship Fund.
- (s) Excludes \$500,000 for the Digital Library from the telecommunications education access fund, \$50,000 for the Maine Black Bears Scholarship Fund, \$137,015 for the UMS Scholarship Fund Plates, \$358,342 for the UMS Scholarship Fund Racino, and \$100,000 in one-time funding for the UMA reaccreditation as a 4-year college.
- (t) Excludes \$500,000 for the Digital Library from the telecommunications education access fund, \$50,000 for the Maine Black Bears Scholarship Fund, \$140,440 for the UMS Scholarship Fund Plates, and \$1,648,920 for the UMS Scholarship Fund Racino.

STATE GENERAL FUND SUPPORT OF MAINE EDUCATION
SUMMARY OF GENERAL FUND APPROPRIATIONS FOR MAINE EDUCATION (a)

II. MAINE PUBLIC HIGHER EDUCATION

	University of Maine System Total	Maine Public Broadcasting Corporation	Maine Community College System (b)	Maine Maritime Academy	State Student Financial Aid Programs (h)				Subtotal Student Financial Aid	Total Public Higher Education
					Maine Health Professions Program (c)	Maine State Grant Program (d)	Educators for Maine Program (e)	Administrative Costs		
1962/63	\$5,785,786	\$0	\$167,638	\$234,500	\$97,500	0	0	-	97,500	6,285,424
1963/64	7,116,470	0	708,460	284,500	108,700	0	0	-	108,700	8,218,130
1964/65	7,657,005	0	793,327	284,500	109,200	0	0	-	109,200	8,844,032
1965/66	10,485,669	0	763,870	382,930	112,480	0	0	-	112,480	11,744,949
1966/67	10,938,491	0	858,695	334,500	128,088	0	0	-	128,088	12,259,774
1967/68	17,419,928	0	1,857,796	526,500	150,426	0	0	-	150,426	19,954,650
1968/69	17,446,247	0	1,889,892	471,500	164,420	0	0	-	164,420	19,972,059
1969/70	22,067,463	0	2,606,724	697,300	195,200	0	0	-	195,200	25,566,687
1970/71	24,858,023	0	2,721,232	706,800	209,450	0	0	-	209,450	28,495,505
1971/72	26,269,994	0	3,129,529	900,000	337,450	0	0	-	337,450	30,636,973
1972/73	28,107,961	0	3,149,096	1,005,000	415,450	150,000	0	-	565,450	32,827,507
1973/74	33,804,042	0	4,557,826 (f)	1,211,238	557,016	250,000	0	-	807,016	40,380,122
1974/75	37,351,916	0	4,685,519 (f)	1,449,962	542,939	450,000	0	-	992,939	44,480,336
1975/76	37,351,916	0	5,431,910 (f)	1,477,049	506,864	458,134	0	-	964,998	45,225,873
1976/77	34,476,725	0	5,517,289 (f)	1,613,063	501,864	457,996	0	-	959,860	42,566,937
1977/78	36,815,096	0	5,789,074	1,813,137	987,300	481,050	0	-	1,468,350	45,885,657
1978/79	38,610,710	0	5,857,347	2,173,793	1,128,078	1,001,922	0	-	2,130,000	48,771,850
1979/80	43,864,060	0	8,617,800	2,351,436	1,450,000	1,026,827	0	-	2,476,827	57,310,123
1980/81	49,311,978	0	8,071,820	2,398,550	1,750,000	1,062,871	0	-	2,812,871	62,595,219
1981/82	52,486,978	0	9,974,900	2,916,550	1,177,408	384,616	0	-	1,562,024	66,940,452
1982/83	57,920,378	0	10,696,579	2,834,550	1,372,345	372,536	0	-	1,744,881	73,196,388
1983/84	60,237,193	0	11,902,509	2,987,932	1,251,800	363,627	0	-	1,615,427	76,743,061
1984/85	72,879,390	0	12,659,047	3,378,124	1,228,950	1,165,471	0	-	2,394,421	91,310,982
1985/86	79,449,150	0	15,143,805	3,645,870	1,115,621	1,634,833	0	-	2,750,454	100,989,279
1986/87	101,026,132	0	16,693,676	4,133,505	1,360,393	2,487,035	0	-	3,847,428	125,700,741
1987/88	113,254,616	0	19,398,113	4,591,224	1,402,393	2,765,490 (g)	0	-	4,167,883	141,411,836
1988/89	131,095,499	0	21,419,654	5,307,814	1,402,393	3,256,721	0	-	4,659,114	162,482,081
1989/90	139,771,886	0	24,061,695	6,343,794	1,391,490	1,965,311 (i)	0	-	3,356,801	173,534,176
1990/91	134,411,978	0	22,933,378 (j)	6,452,665 (k)	1,203,394	7,052,818	0	-	8,256,212	172,054,233
1991/92	135,620,887	0	23,111,053	6,497,320	1,139,636	6,633,819	0	-	7,773,455	173,002,715
1992/93	132,375,585	2,230,157 (m)	22,992,497 (l)	6,372,200	1,333,296	6,847,686	0	-	8,180,982	172,151,421
1993/94	132,725,585	2,230,157	24,492,497 (n)	6,472,200	1,275,298	5,233,759 (o)	0	-	6,509,057	172,429,496
1994/95	132,725,585	2,230,157	26,142,497 (n)	6,472,200	1,275,298	5,677,491 (o)	0	-	6,952,789	174,523,228
1995/96	132,642,841	2,230,157	28,770,504 (n)	6,504,561	1,018,123	7,450,927 (p)	0	335,327	8,804,377	178,952,440
1996/97	135,103,698	2,230,157	29,674,910 (n)	6,569,930	625,000	7,844,050 (p)	0	335,327	8,804,377	182,383,072
1997/98	138,565,672	2,230,157	30,125,533 (n)	6,635,629	785,000	7,434,049	0	335,328	8,554,377	186,111,368
1998/99	146,452,445	2,230,157 (u)	31,130,860 (q)	6,768,342	582,500	10,686,292	962,757	335,328	12,566,877	199,148,681
1999/00	157,156,828	2,279,220	33,564,786 (r)	7,174,443	713,607	11,320,000	475,000	340,000	12,848,607	213,023,884
2000/01	169,310,510	2,329,363	36,750,629 (s)	7,389,677 (t)	1,225,000	10,764,081	737,453	410,000	13,136,534	228,916,713
2001/02	176,343,272	2,390,443	39,808,081 (v)	7,626,385 (w)	373,727	11,926,533	123,728	410,000	12,833,988	239,002,169
2002/03	173,336,418	2,301,219	40,429,622	7,506,379	155,705	12,059,531	248,728	352,277	12,816,241	236,389,879
2003/04	171,121,418	2,182,709	40,139,117 (x)	7,719,938 (x)	498,728	11,281,721	398,728	352,277	12,531,454	233,694,636
2004/05	179,971,418	2,280,138	41,472,054	7,457,281	498,727	10,540,849	398,728	352,276	11,790,580	242,971,471
2005/06	183,121,418	2,240,628	42,216,033	7,548,820	498,728	11,566,369	398,728	352,276	12,816,101	247,943,000
2006/07	183,121,418	2,250,700	43,313,617	7,737,547	498,728	11,511,385	398,728	352,276	12,761,117	249,184,399

SEE FOOTNOTE EXPLANATIONS ON PAGE 13.

UNIVERSITY OF MAINE SYSTEM
SUMMARY OF GENERAL FUND APPROPRIATIONS FOR MAINE EDUCATION

FOOTNOTES TO PAGE 12

- (a) Includes only appropriations for operating expenses. Excludes funds generated by institutions of higher education, i.e., tuition, fees, auxiliary enterprise revenue, etc.
- (b) Includes seven community colleges and a Central Office. Maine Technical College System renamed Maine Community College System effective 7/1/2003.
- (c) Includes funds to secure positions in health related fields for Maine students at various colleges and universities in the Northeast. Excludes student aid funds specifically appropriated to the University of Maine System or the Maine Community College System.
- (d) Student aid funds for students attending either public or private higher education institutions. Includes funds for administration of Division of Higher Education Services in the Department of Education and the student financial assistance programs in FAME. Formerly the Maine Student Incentive Scholarship Program (renamed in 2001). For FY1973 - FY1998 includes funds to establish the Blaine House Scholars Program for eligible Maine high school graduates on the basis of academic achievement and financial need (50%); funds for eligible students for preservice preparation for teaching (40%); and funds for teachers pursuing an advanced degree or continued study in underserved subject areas (10%).
- (e) Funds for eligible Maine high school graduates who pursue a higher education in teaching.
- (f) Includes \$50,000 for student aid.
- (g) In 1987/88 \$10,000 was appropriated to the Student Educational Enhancement Deposit Plan. These funds were to be paid back to the General Fund when the Deposit Plan received deposits.
- (h) Includes funds appropriated to the Finance Authority of Maine (FAME) which administers many of the Student Financial Aid programs, beginning in 1989/90.
- (i) Balance carried forward sufficient to fund Blaine House Scholars program at a constant level.
- (j) Excludes a \$2,029,454 receivable which is the deferred June 1991 allotment. This deferred amount is included in the FY93 appropriation.
- (k) Excludes a \$578,936 receivable which is the deferred June 1991 allotment. This deferred amount has been written off.
- (l) Reflects a \$1,905,731 receivable which is the deferred June 1993 allotment. This deferred amount will be repaid over the next 5+ years starting with a \$320,000 payment in FY94.
- (m) Effective July 1, 1992 MPBN was no longer part of the University as it merged with WPBC and became a separate corporation.
- (n) Includes \$320,000 which is to be applied to the repayment of the receivable created by the deferral of the June 1993 allotment.
- (o) Reflects deappropriations of \$1,394,000 in FY94 and \$978,000 in FY95 from the Blaine House Scholars Program. FAME was authorized to borrow up to \$1,750,000 in each of those years to finance the program.
- (p) Includes appropriations for debt service payments related to FY94 and FY95 borrowing.
- (q) Includes \$305,731 to complete the repayment of the receivable created by the deferral of the June 1993 allotment. Excludes \$3,000,000 in one-time funds for information technology, capital equipment, and facility improvements.
- (r) Excludes one-time appropriation of \$430,000 for capital projects at Eastern Maine Technical College.
- (s) Excludes one-time appropriations of: \$2,000,000 for technology improvements, \$1,000,000 for matching funds for Osher scholarships, \$1,300,000 for Penquis facilities, and \$60,000 for Aroostook County Machine Tool Program.
- (t) Excludes one-time appropriation of \$4,000,000 for capital improvements.
- (u) Excludes one-time appropriation of \$2,000,000 to assist with the federally mandated conversion to digital broadcasting.
- (v) Excludes one-time appropriation of \$80,000 for the establishment of the Health Workforce Retraining Program.
- (w) Excludes one-time appropriation of \$50,000 to encourage private donations to the Academy's Small Vessel Endowment Fund on a 2-for-1 basis.
- (x) Excludes one-time appropriation to provide matching funds for private grants for scholarship assistance or limiting in-state tuition increases.

STATE GENERAL FUND SUPPORT OF MAINE EDUCATION
SUMMARY OF GENERAL FUND APPROPRIATIONS FOR MAINE EDUCATION (a)

III. TOTAL MAINE EDUCATION

	Total Public Higher Education	Post- Secondary Education Commission	New England College of Osteopathic Medicine (b)	Total Higher Education	Public Elementary and Secondary Education (c)	Grand Total
1962/63	\$6,285,424	\$0	\$0	\$6,285,424	\$21,609,980	\$27,895,404
1963/64	8,218,130	0	0	8,218,130	25,167,735	33,385,865
1964/65	8,844,032	0	0	8,844,032	26,120,079	34,964,111
1965/66	11,744,949	0	0	11,744,949	31,897,077	43,642,026
1966/67	12,259,774	0	0	12,259,774	34,585,873	46,845,647
1967/68	19,954,650	0	0	19,954,650	42,240,437	62,195,087
1968/69	19,972,059	0	0	19,972,059	43,204,269	63,176,328
1969/70	25,566,687	0	0	25,566,687	53,909,290	79,475,977
1970/71	28,495,505	0	0	28,495,505	57,859,943	86,355,448
1971/72	30,636,973	0	0	30,636,973	70,286,895	100,923,868
1972/73	32,827,507	0	0	32,827,507	71,379,029	104,206,536
1973/74	40,380,122	0	0	40,380,122	92,946,743	133,326,865
1974/75	44,480,336	0	0	44,480,336	120,612,763	165,093,099
1975/76	45,225,873	50,000	0	45,275,873	138,555,126	183,830,999
1976/77	42,566,937	0	0	42,566,937	169,221,030	211,787,967
1977/78	45,885,657	25,000	0	45,910,657	182,700,966	228,611,623
1978/79	48,771,850	25,000	250,000	49,046,850	200,131,270	249,178,120
1979/80	57,310,123	25,990	0	57,336,113	222,040,509	279,376,622
1980/81	62,595,219	27,122	0	62,622,341	235,314,182	297,936,523
1981/82	66,940,452	0	0	66,940,452	261,473,191	328,413,643
1982/83	73,196,388	0	0	73,196,388	280,749,257	353,945,645
1983/84	76,743,061	0	0	76,743,061	307,443,448	384,186,509
1984/85	91,310,982	0	0	91,310,982	331,500,889	422,811,871
1985/86	100,989,279	0	0	100,989,279	392,403,531	493,392,810
1986/87	125,700,741	0	0	125,700,741	428,373,327	554,074,068
1987/88	141,411,836	0	0	141,411,836	483,829,407	625,241,243
1988/89	162,482,081	0	0	162,482,081	543,850,580	706,332,661
1989/90	173,534,176	0	0	173,534,176	616,069,588	789,603,764
1990/91	172,054,233	0	0	172,054,233	569,554,957 (d)	741,609,190
1991/92	173,002,715	0	0	173,002,715	619,770,956	792,773,671
1992/93	172,151,421	0	0	172,151,421	677,511,154	849,662,575
1993/94	172,429,496	0	0	172,429,496	630,193,696	802,623,192
1994/95	174,523,228	0	0	174,523,228	674,556,557	849,079,785
1995/96	178,952,440	0	0	178,952,440	689,374,772	868,327,212
1996/97	182,383,072	0	0	182,383,072	716,684,199	899,067,271
1997/98	186,111,368	0	0	186,111,368	747,954,664	934,066,032
1998/99	199,148,681	0	0	199,148,681	816,499,840 (e)	1,015,648,521
1999/00	213,023,884	0	0	213,023,884	848,900,343	1,061,924,227
2000/01	228,916,713	0	0	228,916,713	930,648,867	1,159,565,580
2001/02	239,002,169	0	0	239,002,169	926,855,002	1,165,857,171
2002/03	236,389,879	0	0	236,389,879	941,783,827	1,178,173,706
2003/04	233,694,636	0	0	233,694,636	948,917,533	1,182,612,169
2004/05	242,971,471	0	0	242,971,471	975,800,162	1,218,771,633
2005/06	247,943,000	0	0	247,943,000	1,085,328,582	1,333,271,582
2006/07	249,184,399	0	0	249,184,399	1,127,969,231	1,377,153,630

(a) Includes only appropriations for operating expenses. Excludes funds generated by institutions of higher education, i.e., tuition, fees, auxiliary enterprise revenue, etc.

(b) Private institution.

(c) Includes Federal Revenue Sharing Funds made available to elementary and secondary education. Excludes local revenues earmarked for elementary and secondary education. Excludes state library, state museum, and other non-educational items. Includes adult education and teachers' retirement. Includes postsecondary educational programs beginning with 1996/97.

(d) Includes \$1,131,198 from Alcohol Premium Tax undedicated for FY91. Has been reduced by \$40,800,000 which is the deferred June 1991 allotment for General Purpose Aid to Local Schools. This deferred allotment has not been reappropriated as with the public higher education institutions.

(e) Excludes \$39,226,419 appropriated to the Department of Administrative and Financial Services for the June 1998 school subsidy payment that would otherwise have been paid in July 1998.

**UNIVERSITY OF MAINE SYSTEM APPROPRIATION
(119TH LEGISLATURE)**

	Base Appropriation ¹	One-Time Appropriation	Total
FY1999 Appropriation⁵	\$146,452,445	\$0	\$146,452,445
FY2000 Appropriation			
<u>First Regular Session</u>			
Base Increases			
Part I at 2.9% ²	4,247,121		
Part II Supplemental at .5% ³	<u>732,262</u>		
Total at 3.4%	4,979,383		
\$5.55 million Research & Development ³	5,550,000		
USM Center for Advanced Law & Management ³	75,000		
State Research Library at UM ³	175,000		
Deappropriation - Education Research Institute ⁴	<u>(75,000)</u>		
One-time Increases			
Edmund S. Muskie School of Public Service at USM ³		\$3,500,000	
Northern Maine Health Initiative at UMFK ³		1,200,000	
Strategic Technology Initiative in the Katahdin Region ³		200,000	
Historic Atlas of Maine Project at UM ³		<u>160,000</u>	
Total Increase - First Regular Session	<u>10,704,383</u>	<u>5,060,000</u>	<u>15,764,383</u>
FY2000 Appropriation	\$157,156,828	\$5,060,000	\$162,216,828

¹ Excludes \$270,250 to be transferred from the Maine Community Policing Institute Surcharge Fund to the University of Maine System for the Maine Community Policing Institute at UMA (Chapter 357 Public Law, signed May 28, 1999).

² Chapter 16 Public Law, signed March 15, 1999

³ Chapter 401 Public Law, signed June 4, 1999

⁴ Chapter 42 Public & Special Law, signed June 11, 1999

⁵ Includes \$4.0 million for R&D, Chapter 16 Public Law, signed March 15, 1999 and Chapter 643, Part LL, Section S-3, approved 4/1/98

**UNIVERSITY OF MAINE SYSTEM APPROPRIATION
(119TH LEGISLATURE)**

	Base Appropriation ¹	One-Time Appropriation ²	Total
FY2000 Appropriation	\$157,156,828	\$5,060,000	\$162,216,828
FY2001 Appropriation			
<u>First Regular Session</u>			
Base Increases			
Part I at 1.9% ³	2,904,452		
Part II Supplemental at 1.5% ⁴	2,244,230		
Total at 3.4%	5,148,682		
\$5.6 million Research & Development ⁴	50,000		
Debt Service for \$25 million of University Bonds ⁴	2,500,000		
Total Increase - First Regular Session	7,698,682	0	7,698,682
<u>Second Regular Session⁵</u>			
Base Increases			
Employee Compensation	4,000,000		
USM Senior College	150,000		
Maine Patent Program at USM	300,000		
Maine Writing Project at UM ⁶	5,000		
One-time Increases			
Matching Funds for Osher Scholarships		1,000,000	
Aubert Hall (UM)		9,000,000	
Lewiston/Auburn Campus		3,500,000	
UMS Center (Houlton)		2,000,000	
Technical Center (UMFK)		1,000,000	
University College of Bangor (UMA)		1,500,000	
UMS Center (Calais)		250,000	
Total Increase - Second Regular Session	4,455,000	18,250,000	22,705,000
<u>Total Increase - First and Second Regular Session</u>	12,153,682	18,250,000	30,403,682
FY2001 Appropriation	\$169,310,510	\$18,250,000	\$187,560,510

¹ Excludes \$375,000 to be transferred from the Maine Community Policing Institute Surcharge Fund to the University of Maine System for the Maine Community Policing Institute at UMA (Chapter 357 Public Law, signed May 28, 1999).

² Excludes \$500 to be transferred from Other Special Revenue Funds to the University of Maine System for the Maine Patent Program at USM (Chapter 731 Public Law, signed April 25, 2000).

³ Chapter 16 Public Law, signed March 15, 1999

⁴ Chapter 401 Public Law, signed June 4, 1999

⁵ Chapter 731 Public Law, signed April 25, 2000.

⁶ Chapter 78 Public & Special Law, signed April 12, 2000.

**UNIVERSITY OF MAINE SYSTEM APPROPRIATION
(120TH LEGISLATURE)**

	Base Appropriation ¹	One-Time Appropriation	Total
FY2001 Appropriation	\$169,310,510	\$18,250,000	\$187,560,510
FY2002 Appropriation			
<u>First Regular Session</u>			
Base Increases			
Part I at 4.2% ²	7,032,762		
One-time Increases ³			
Lewiston/Auburn College Teachers for Elementary and Middle Schools Project (USM)		75,000	
Deappropriation for Maine Patent Program (USM)		(75,000)	
Western Maine University & Technical College Center (Architectural Work)		120,000	
Total Increase	7,032,762	120,000	7,152,762
FY2002 Appropriation	\$176,343,272	\$120,000	\$176,463,272

¹ Excludes \$100,000 to be transferred from the Maine Community Policing Institute Surcharge Fund to the University of Maine System for the Maine Community Policing Institute at UMA (Chapter 358 Public Law, signed June 4, 2001).

Also excludes \$500,000 for the Digital Library from the telecommunications education access fund, Chapter 522 Public Law, signed March 12, 2002.

² Chapter 358 Public Law, signed June 4, 2001

³ Chapter 439 Public Law, signed June 21, 2001

**UNIVERSITY OF MAINE SYSTEM APPROPRIATION
(120TH LEGISLATURE)**

	Base Appropriation ¹	One-Time Appropriation	Total
FY2002 Appropriation	\$176,343,272	\$120,000	\$176,463,272
FY2003 Appropriation			
<u>First Regular Session</u>			
Base Increases			
Part I at 2.5% ²	4,338,583		
Part I Deappropriation of 2.5% ²	(4,338,583)		
Part II Supplemental at 2.5% ³	4,338,583		
Total at 2.5%	4,338,583		
Research & Development ³	2,000,000		
Western Maine University & Technical College Center ³	90,000		
<u>Second Regular Session</u>⁸			
R&D Deappropriation ⁴	(1,000,000)		
2% Deappropriation ⁵			
R&D	(1,000,000)		
Other	(2,585,437)		
Subtotal 2% Deappropriation	(3,585,437)		
3rd One-Time Deappropriation ⁶	0	(1,850,000)	
4th One-Time Deappropriation ⁷	0	(3,000,000)	
Total Change	1,843,146	(4,850,000)	(3,006,854)
FY2003 Appropriation	\$178,186,418	(\$4,850,000)	\$173,336,418

¹ Excludes \$400,000 to be transferred from the Maine Community Policing Institute Surcharge Fund to the University of Maine System for the Maine Community Policing Institute at UMA (Chapter 358 Public Law, signed June 4, 2001 (\$50,000) and Chapter 559 Public Law, signed March 25, 2002 (\$350,000)). Also excludes \$500,000 for the Digital Library from the telecommunications education access fund, Chapter 522 Public Law, signed March 12, 2002.

² Chapter 358 Public Law, signed June 4, 2001

³ Chapter 439 Public Law, signed June 21, 2001

⁴ One-time deappropriation - Chapter 559 Public Law, signed March 25, 2002

⁵ Chapter 714 Public Law, signed November 18, 2002

⁶ Chapter 2 Public Law, signed February 13, 2003

⁷ Chapter 51 Public Law, signed April 18, 2003

⁸ 2nd Regular Session of the 120th Legislature and 1st Regular Session of the 121st Legislature

**UNIVERSITY OF MAINE SYSTEM APPROPRIATION
(121ST LEGISLATURE)**

	Base Appropriation ¹	One-Time Appropriation	Total
FY2003 Appropriation	\$178,186,418	(\$4,850,000)	\$173,336,418
FY2004 Appropriation			
<u>First Regular Session</u>			
Base Increases			
Part I at 2.0% ²	3,563,728		
Part I Deappropriation ²	(3,563,728)		
Casco Bay Estuary Project at USM ²	35,000		
Total	35,000		
Match of Osher Scholarship Gift ²	0	475,000	
R&D Appropriation ²	100,000		
Deappropriation to Reflect Health Plan Savings	0		
Due to Increased MaineCare Reimbursement Rates ³	(2,250,000)		
One-Time Appropriation to Reduce In-State Tuition ³		1,000,000	
<u>Second Regular Session</u>			
Deappropriation ⁴			
Educational & General	(4,850,000)		
Maine Patent Program	(100,000)		
Total Deappropriation	(4,950,000)		
Total Change	(7,065,000)	1,475,000	(5,590,000)
FY2004 Appropriation	\$171,121,418	\$1,475,000	\$172,596,418

¹ Excludes \$446,137 for the Maine Community Policing Institute at UMA that has been transferred to the Judicial Department.
Also excludes \$510,000 for the Digital Library from the telecommunications education access fund.
Also excludes \$11,000 for the Maine Black Bears Scholarship Fund (Chapter 673 Public Law signed 4/29/2004)

² Chapter 20 Public Law, signed March 27, 2003.

³ Chapter 451 Public Law, signed June 12, 2003

⁴ Chapter 513 Public Law, signed January 30, 2004.

**UNIVERSITY OF MAINE SYSTEM APPROPRIATION
(121ST LEGISLATURE)**

	Base Appropriation ¹	One-Time Appropriation	Total
FY2004 Appropriation	\$171,121,418	\$1,475,000	\$172,596,418
FY2005 Appropriation			
<u>First Regular Session</u>			
Base Increases			
Part I at 2.0% ²	3,635,031		
Part I Deappropriation ²	(3,635,031)		
Total	0		
<u>Second Regular Session</u>			
Restoration of FY2004 Deappropriation ³	4,950,000		
Deappropriation ³			
Educational & General	(1,050,000)		
Maine Patent Program	(150,000)		
Total Deappropriation	(1,200,000)		
Offset Deappropriation to Reflect Health Plan Savings Due to Increased MaineCare Reimbursement Rates ⁴	2,250,000		
Cascade from Unappropriated Surplus ⁴			
Educational & General	850,000		
Maine Economic Improvement Fund (R&D)	2,000,000		
Total Change	8,850,000	0	8,850,000
FY2005 Appropriation	\$179,971,418	\$0	\$179,971,418

¹ Excludes \$455,060 for the Maine Community Policing Institute at UMA that has been transferred to the Judicial Department.
Also excludes \$520,200 for the Digital Library from the telecommunications education access fund.
Also excludes \$12,950 for the Maine Black Bears Scholarship Fund (Chapter 673 Public Law signed 4/29/2004)

² Chapter 20 Public Law, signed March 27, 2003.

³ Chapter 513 Public Law, signed January 30, 2004.

⁴ Chapter 673 Public Law, signed April 29, 2004.