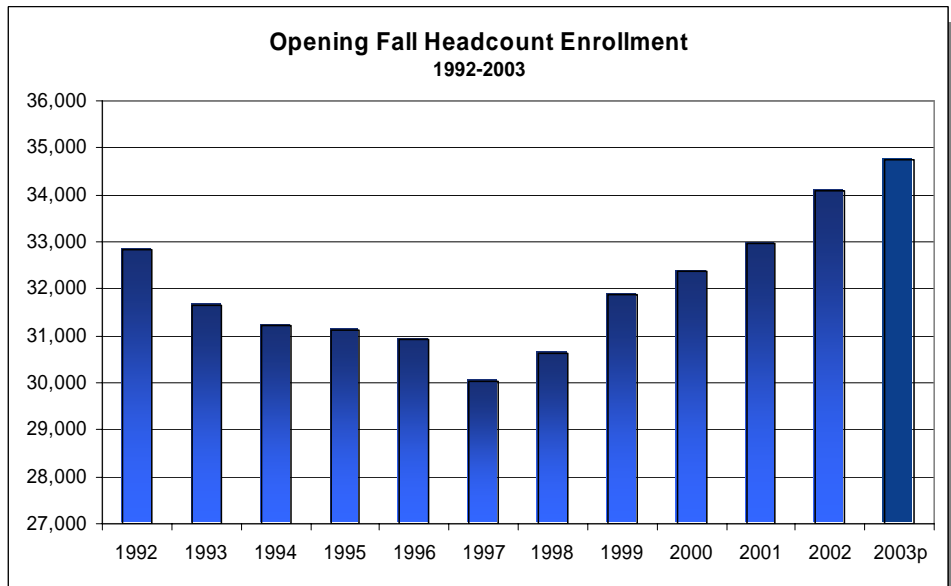


**Enrollment
Summit 03**

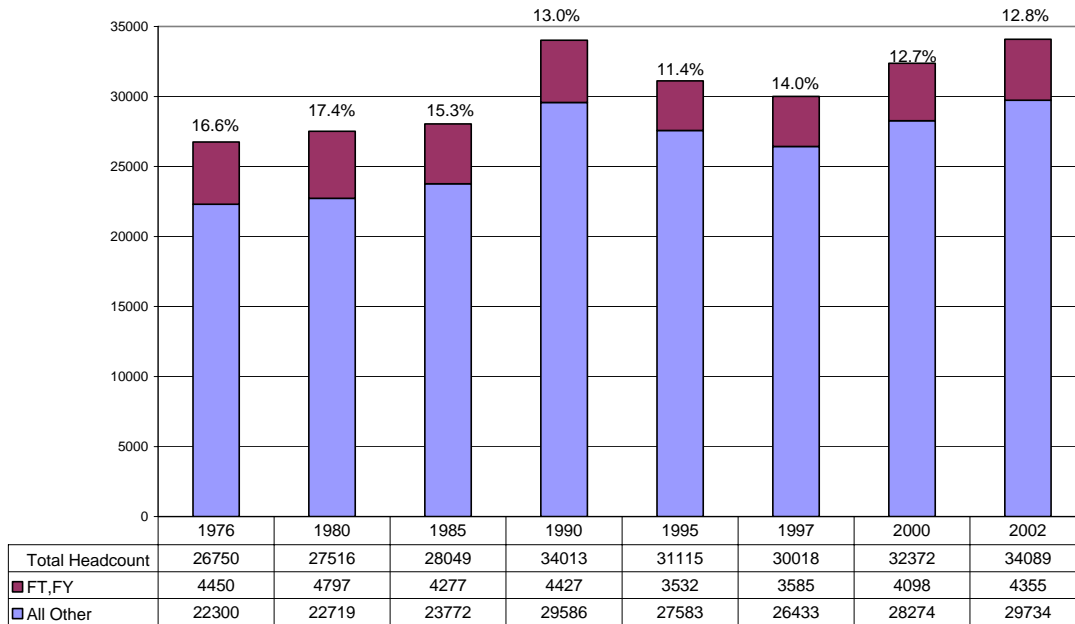


Trends in Enrollment



September 24, 2003

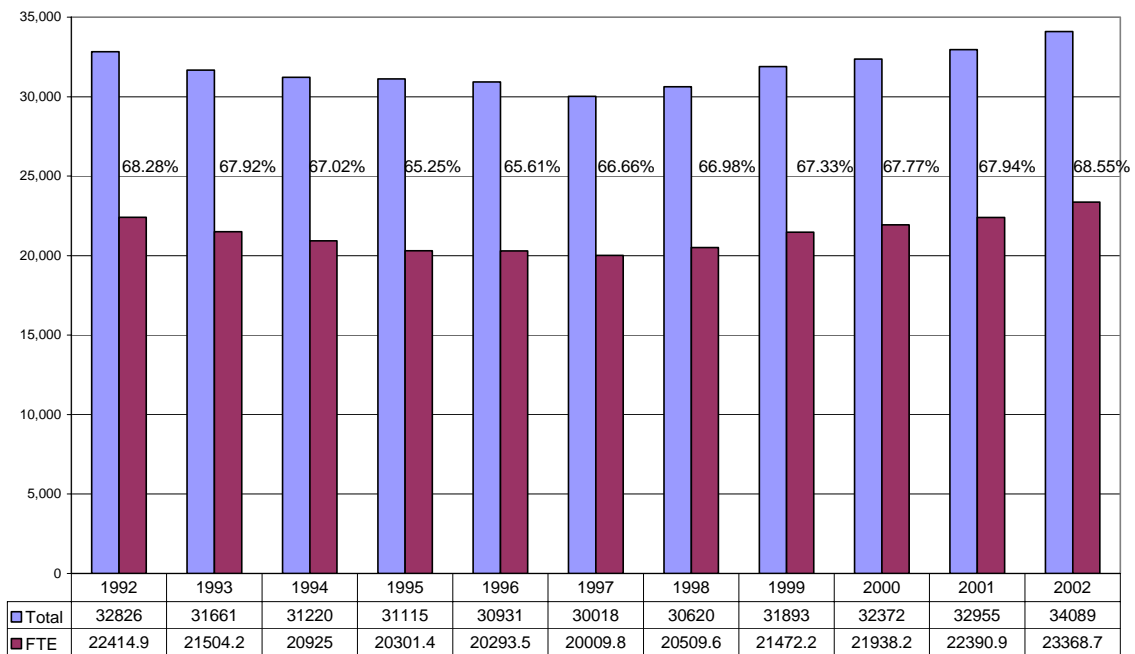
**Total Fall Headcount Enrollment and First-time, First-year Headcount Enrollment
1976-2002**



**Total Fall Headcount Enrollment by Gender
1992-2002**



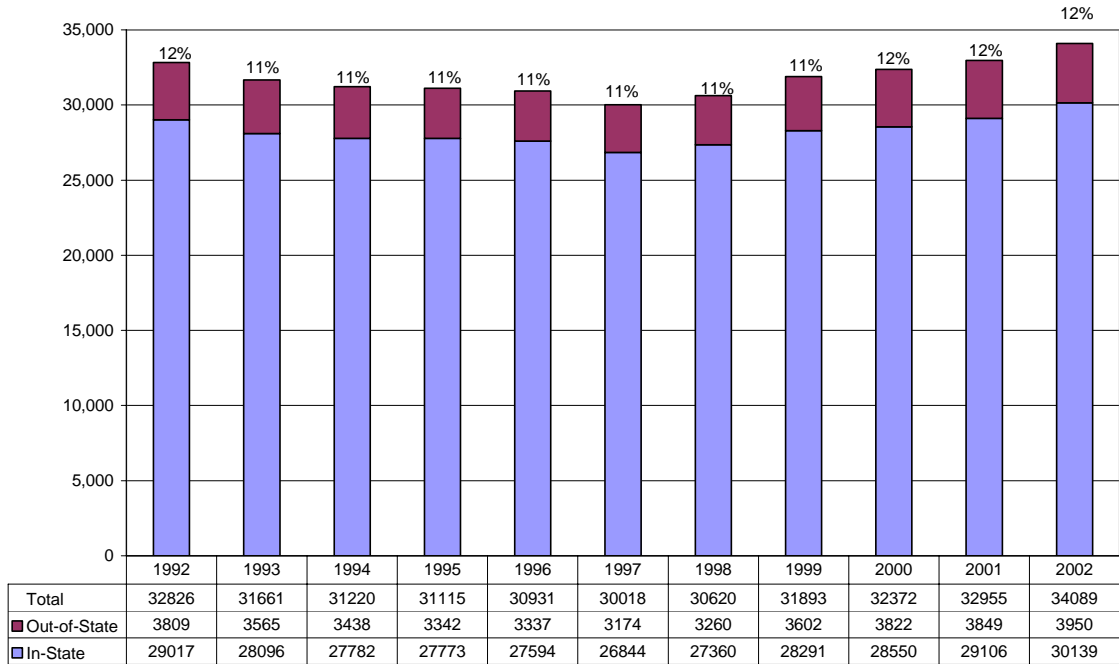
Enrollment by Headcount and FTE 1992-2002



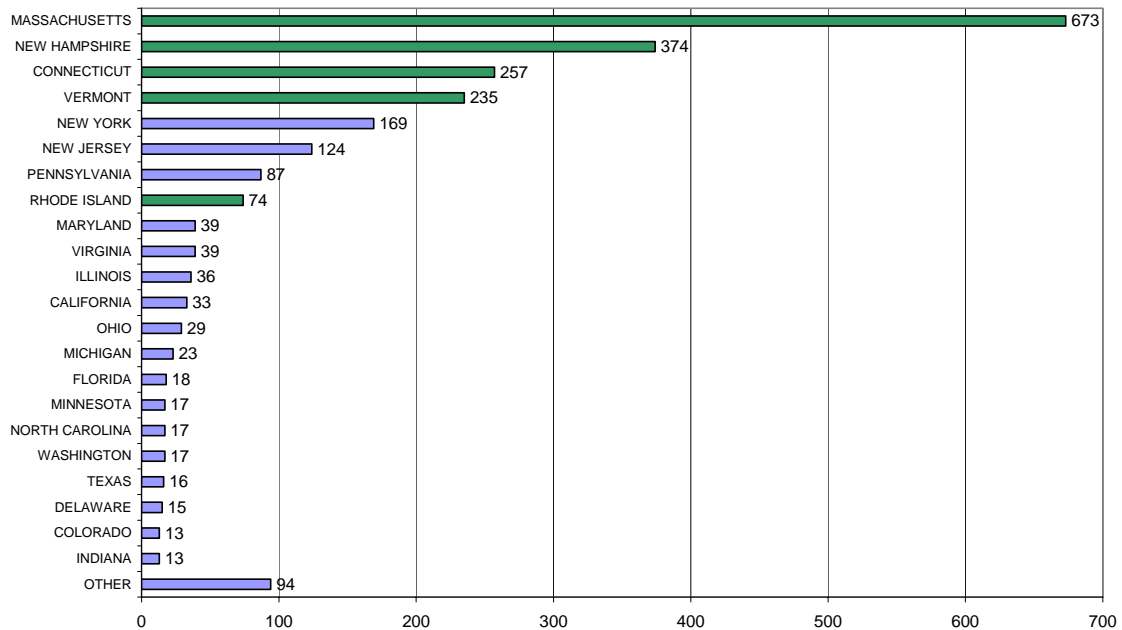
Part-time/Full-time Headcount Enrollment Fall '92- Fall '02



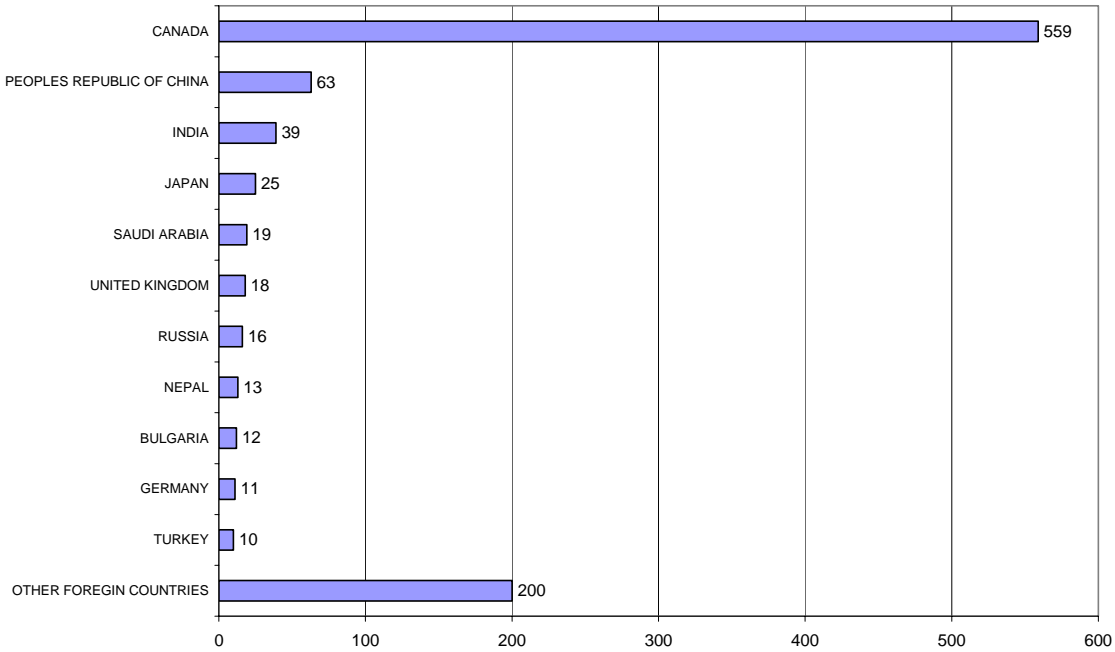
**OPENING FALL HEADCOUNT ENROLLMENT BY RESIDENCE
1992-2002**



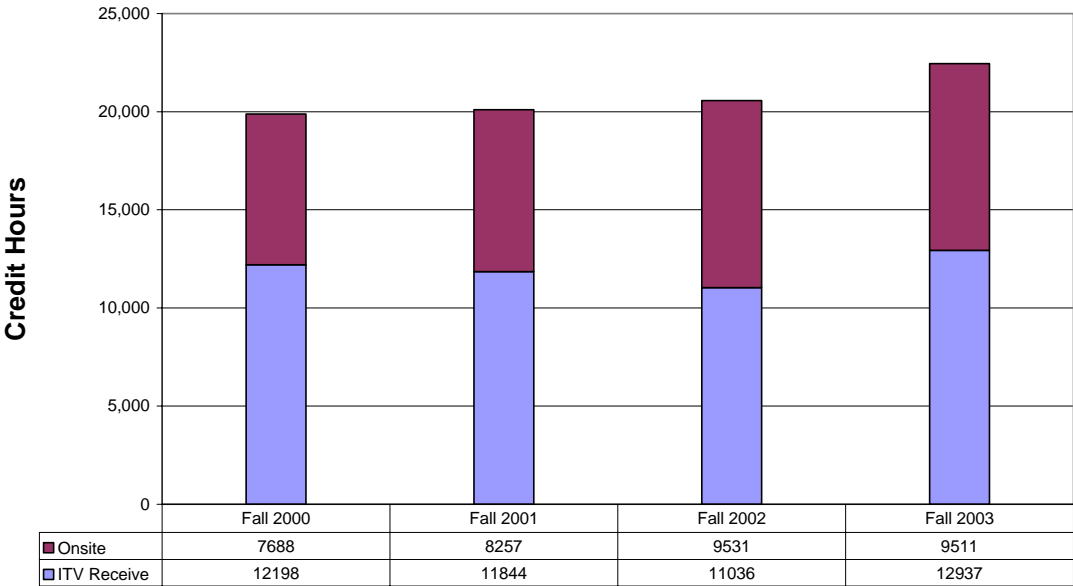
**Out-of-State Student Headcount Enrollment
Fall 2002**



**Headcount Enrollment By Country of Residence
Fall 2002**



**University College
Fall Credit Hour Enrollment
Fall '00 - Fall '03**

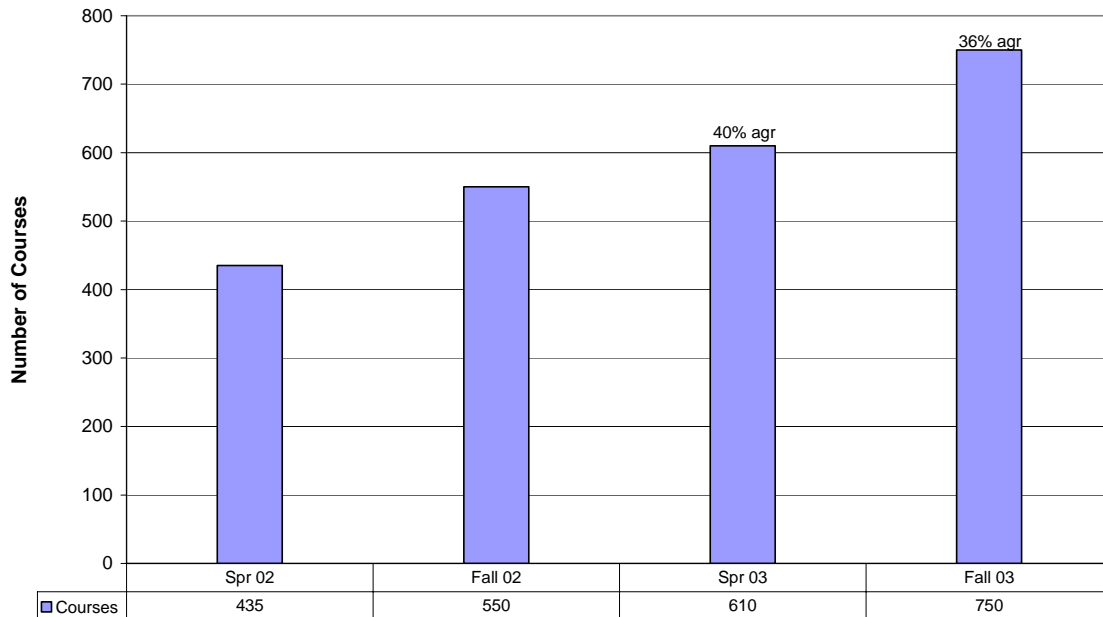


UMS Growth in Online Credit Hours Fall '00 - Fall '03



agr = annual growth rate

UMS Courses Using Blackboard Spring '02 - Fall '03



agr = annual growth rate

**Total Number of Students Transferring
from Maine Technical Colleges to UMS
as of Fall 2001**

Total Number of Students Transferring								
From a MTCS associate degree program at:								To a UMS baccalaureate program at
CMTC	EMTC	KVTC	NMTC	SMTC	WCTC	YCTC	Total	
4	152	141	18	68	13	4	400	UMA
2	11	42	2	18		1	76	UMF
	3	4	29	2			38	UMFK
	5	3	4	4	42	1	59	UMM
1	124	47	25	33	7	3	240	UM
	7	2	109	1	4		123	UMPI
28	19	33	15	382	4	22	503	USM
35	321	272	202	508	70	31	1439	Total
Number of students transferring 50 or more credits								
CMTC	EMTC	KVTC	NMTC	SMTC	WCTC	YCTC	Total	
2	18	27	6	16		1	70	UMA
1	3	16		6		1	27	UMF
		1	4				5	UMFK
	2		2		14		18	UMM
	36	14	9	14	1	1	75	UM
	1	1	22				24	UMPI
18	12	18	9	176	1	10	244	USM
21	72	77	52	212	16	13	463	Total

All Transfers From the Maine Technical Colleges *

Fall 2001

	CMTC	EMTC	KVTC	NMTC	SMTC	WCTC	YCTC	Total
Augusta	4	152	141	18	68	13	4	400
Farmington	2	11	42	2	18	0	1	76
Fort Kent	0	3	4	29	2	0	0	38
Machias	0	5	3	4	4	42	1	59
Orono	1	124	47	25	33	7	3	240
Presque_Isle	0	7	2	109	1	4	0	123
Southern Me.	27	19	33	15	384	4	22	504
--Total--	34	321	272	202	510	70	31	1440

Fall 2002

	CMTC	EMTC	KVTC	NMTC	SMTC	WCTC	YCTC	Total
Augusta	8	148	144	20	84	29	10	443
Farmington	2	12	50	0	21	0	3	88
Fort Kent	0	3	7	31	3	0	0	44
Machias	0	5	4	3	4	45	2	63
Orono	1	184	48	30	41	9	6	319
Presque_Isle	0	10	1	120	3	4	0	138
Southern Me.	26	16	39	16	440	5	37	579
--Total--	37	378	293	220	596	92	58	1674

Fall 2003 (September 22)

	CMTC	EMTC	KVTC	NMTC	SMTC	WCTC	YCTC	Total
Augusta	6	169	152	21	84	22	7	461
Farmington	1	10	41	0	18	0	2	72
Fort Kent	0	6	9	36	4	0	0	55
Machias	0	6	3	3	5	53	3	73
Orono	1	207	56	26	38	9	11	348
Presque_Isle	0	11	2	106	3	6	0	128
Southern Me.	23	16	35	18	451	5	60	608
--Total--	31	425	298	210	603	95	83	1745

* All Tech. College transfers enrolled For the Fall Term

First-Time Transfers From the Maine Technical Colleges *

Fall 2001

	CMTC	EMTC	KVTC	NMTC	SMTC	WCTC	YCTC	Total
Augusta	1	24	19	5	11	1	3	64
Farmington	1	2	12	1	4	0	0	20
Fort Kent	0	1	1	9	1	0	0	12
Machias	0	1	1	0	2	11	1	16
Orono	0	26	11	6	8	1	3	55
Presque_Isle	0	2	1	28	1	3	0	35
Southern Me.	4	6	5	1	75	3	11	105
--Total--	6	62	50	50	102	19	18	307

Fall 2002

	CMTC	EMTC	KVTC	NMTC	SMTC	WCTC	YCTC	Total
Augusta	2	35	24	6	20	2	2	91
Farmington	0	3	11	0	9	0	1	24
Fort Kent	0	1	3	10	1	0	0	15
Machias	0	1	0	1	1	11	0	14
Orono	0	49	5	9	14	4	2	83
Presque_Isle	0	3	0	29	1	1	0	34
Southern Me.	1	6	13	6	87	2	11	126
--Total--	3	98	56	61	133	20	16	387

Fall 2003 (September 22)

	CMTC	EMTC	KVTC	NMTC	SMTC	WCTC	YCTC	Total
Augusta	0	33	19	2	16	6	0	76
Farmington	0	0	0	0	2	0	0	2
Fort Kent	0	3	0	15	2	0	0	20
Machias	0	1	0	2	0	10	1	14
Orono	0	47	14	5	11	2	3	82
Presque_Isle	0	3	2	19	0	2	0	26
Southern Me.	4	3	9	5	107	1	30	159
--Total--	4	90	44	48	138	21	34	379

* Tech College transfers enrolled in the Fall term newly admitted for the Fall term.