

SUMMARY OF SPRING 2011 ENROLLMENTS

February 18, 2011



*Maine's
Public
Universities*

UNIVERSITY OF MAINE SYSTEM

SUMMARY OF SPRING 2011 ENROLLMENTS

INTRODUCTION

This report provides summary information regarding University enrollments. Much of this report has been revised to display a greater variety of data. Institutional level detail corresponding to this report can be found at <http://www.maine.edu/system/ppa/EnrollmentSummaries.php>.

TABLE OF CONTENTS

	<u>PAGE</u>
Highlights	1
By Headcount	2
By FTE (Full-time Equivalent)	3
Fall-to-Spring FTE Enrollment	4
By Residence, Gender, Full-time, Part-time	5
By Degree Level	6
By Race/Ethnicity	7
By Age	8
By County, State, Country	9
By First-time First-year and Transfer	10
By Credit Hours by Mode	11
By Distance Education by Degree Level	12

SUMMARY OF SPRING 2011 ENROLLMENTS

HIGHLIGHTS

Headcount Enrollment

- Spring 2011 headcount enrollment for Maine's public universities was 30,080 and reflects an annual decline of -2.2% in total enrollment as compared to last Spring of 30,771.
- In-state enrollment comprises 87% of the student body. In-state enrollment decreased annually by -3.2% and out-of-state enrollment increased by 5.0%.
- Women still make up the majority of students within UMS, 60%. Male enrollment decreased by -1.6% and female enrollment declined -2.7%.
- Full-time students decreased by -0.9% and part-time students declined by -4.5%.

FTE Enrollment

- FTE enrollment decreased by 1.1% from 22,305 to 22,061. The fall-to-spring FTE enrollment ratio decreased from 94.1% to 93.7%.

Degree level Enrollment

- 71% of students are pursuing a baccalaureate degree, followed by 12% pursuing masters, certificate of advanced study, or doctoral degrees. Nearly 10% are undergraduate non-degree students and 6% are associate degree students. The final 1% of the student body is law students.

Enrollment by Age

- 50% of part-time students are between the ages of 30 and 64. 76% of full-time students are between the ages of 18 and 25.

Enrollment by Residence

- Cumberland, Penobscot, and Kennebec county residents make up more than half of the in-state student body. The top five states represented are Massachusetts, New Hampshire, Connecticut, Vermont, and New York. Canada has 299 students enrolled followed by 75 students from China.

Incoming Student & Transfer Enrollment

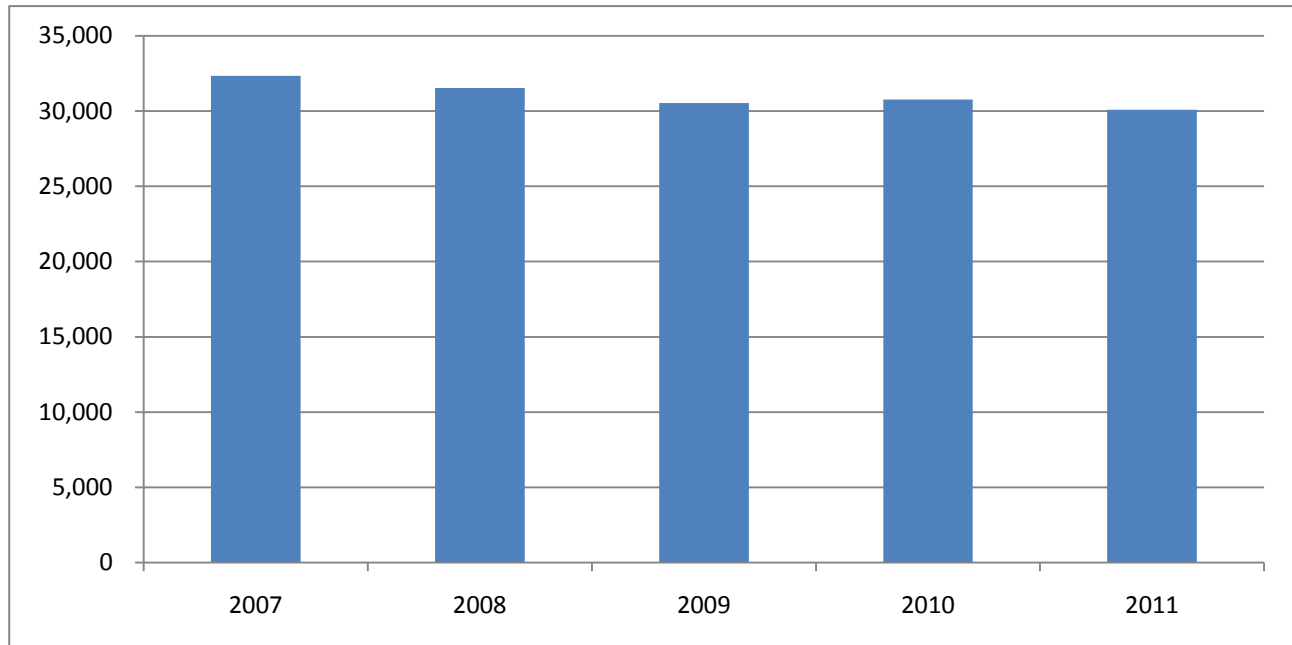
- First-time, first-year in-state students are up by 4.5% from 375 in Spring 2010 to 392 in Spring 2011.
- Maine Community College Students grew by 45% from Spring 2010.

Distance Education Enrollment

- 17% of all credit hours are taught via distance education.
- Distance online credit hours make up 67% of all distance education delivery modes, followed by distance ITV at 16%, 14% by distance onsite, and 3% of distance video conferencing.

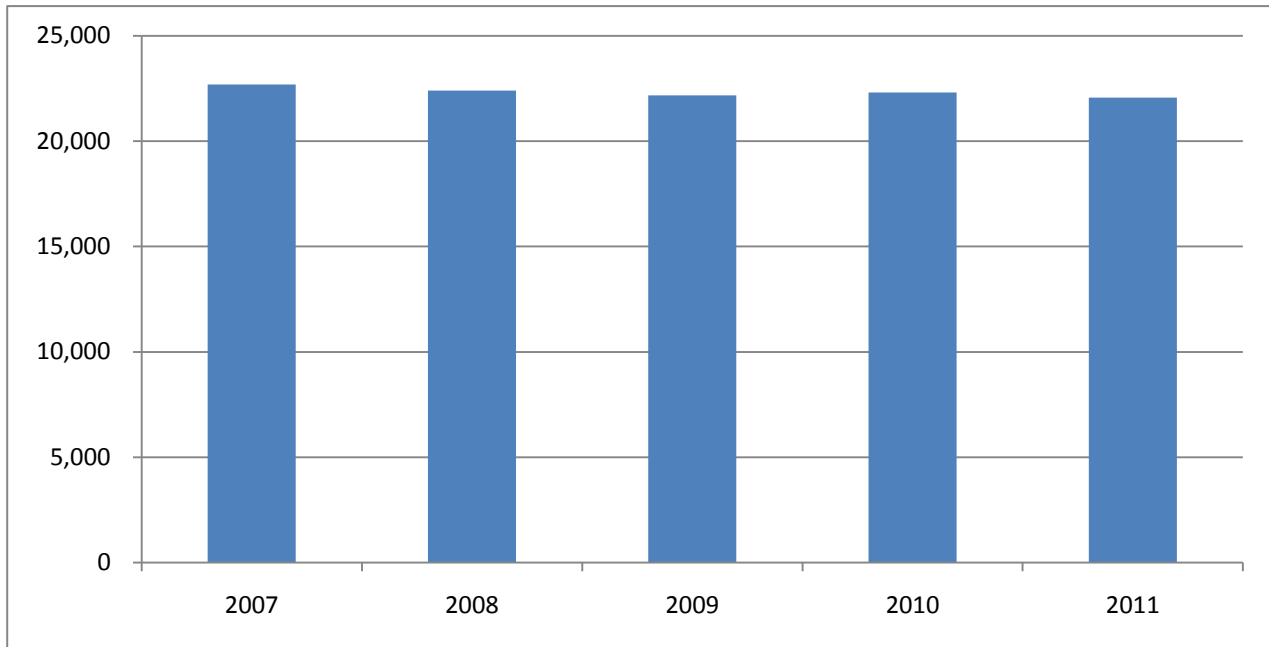
Opening Spring Headcount Enrollment (2007 - 2011)

	2007	2008	2009	2010	2011	% of Total	% Change	
							1-Year	5-year
UM	11,003	11,199	11,114	10,979	10,551	35.1%	-3.9%	-4.1%
UMA	5,203	4,865	4,755	4,962	4,920	16.4%	-0.8%	-5.4%
UMF	2,286	2,159	2,119	2,144	2,166	7.2%	1.0%	-5.2%
UMFK	1,296	1,223	1,052	1,178	1,122	3.7%	-4.8%	-13.4%
UMM	1,286	1,170	1,050	1,027	855	2.8%	-16.7%	-33.5%
UMPI	1,415	1,377	1,296	1,299	1,440	4.8%	10.9%	1.8%
USM	9,851	9,532	9,145	9,182	9,026	30.0%	-1.7%	-8.4%
TOTAL	32,340	31,525	30,531	30,771	30,080	100.0%	-2.2%	-7.0%



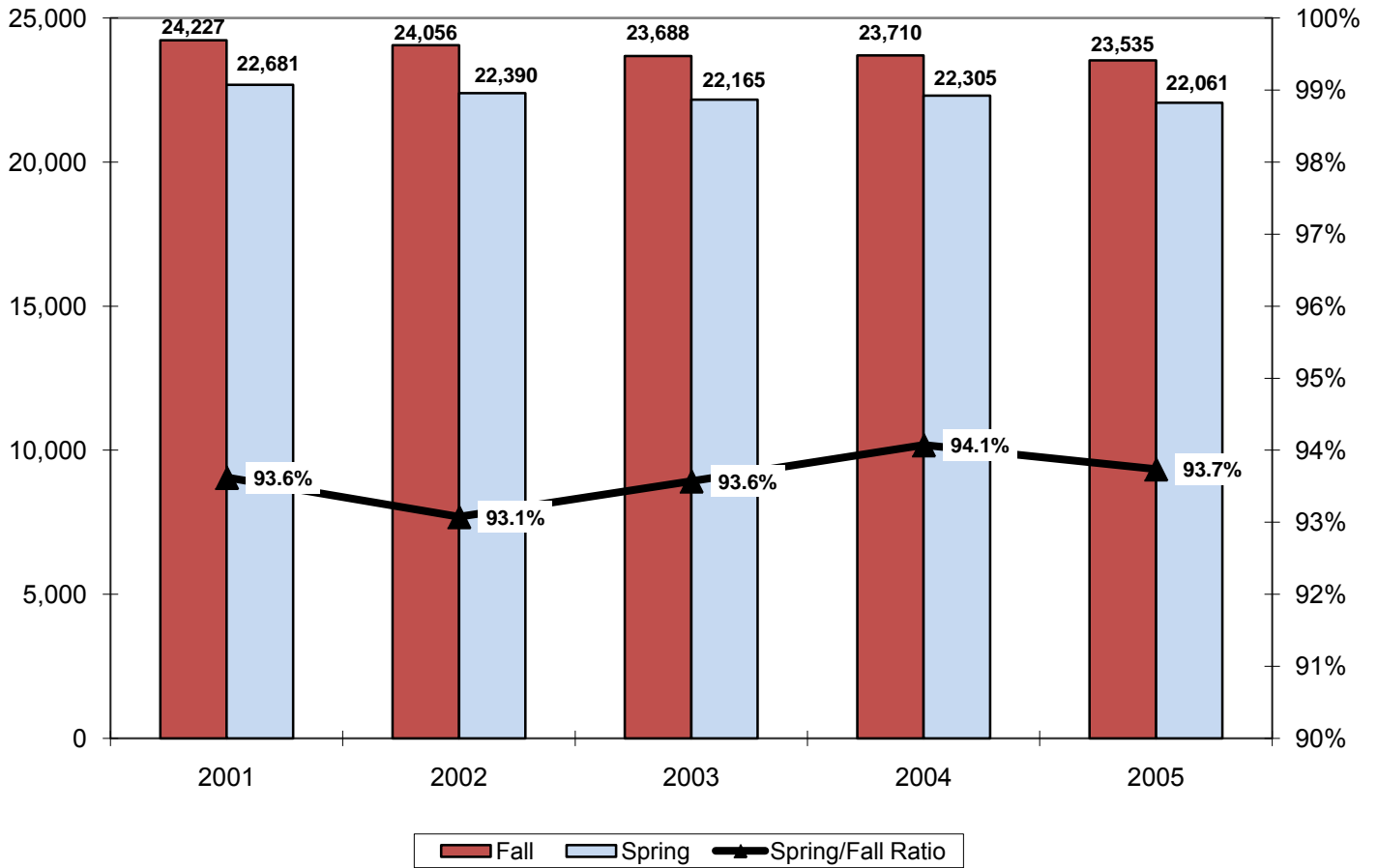
Opening Spring FTE Enrollment* (2007 - 2011)

	2007	2008	2009	2010	2011	% of Total	% Change	
							1-Year	5-year
UM	8,819	8,983	9,066	8,917	8,662	39.3%	-2.9%	-1.8%
UMA	2,623	2,493	2,513	2,698	2,749	12.5%	1.9%	4.8%
UMF	1,936	1,846	1,834	1,851	1,847	8.4%	-0.2%	-4.6%
UMFK	847	821	671	694	687	3.1%	-1.0%	-18.9%
UMM	629	594	576	583	520	2.4%	-10.7%	-17.2%
UMPI	1,094	1,019	956	941	967	4.4%	2.8%	-11.5%
USM	6,734	6,634	6,549	6,621	6,629	30.0%	0.1%	-1.6%
TOTAL	22,681	22,390	22,165	22,305	22,061	100.0%	-1.1%	-2.7%



* The formula for calculating Fall FTE (for all campuses except UMF starting in Fall 2006) is as follows:
 Fall Undergraduate Credit Hours/15 + Fall Professional (Law) Credit Hours/15 + Fall Graduate Credit Hours/9 = Fall FTE
 +UMF: Fall Undergraduate Credit Hours/16 + Fall Graduate Credit Hours/9 = Fall FTE
 Totals may not add to detail due to rounding
 Note: Percentages are rounded

FALL-TO-SPRING FTE ENROLLMENT*
(2007 - 2011)**



	2007	2008	2009	2010	2011
Fall	24,227	24,056	23,689	23,710	23,535
Spring	22,681	22,390	22,165	22,305	22,061
Difference	1,545	1,666	1,524	1,405	1,474
Ratio	93.6%	93.1%	93.6%	94.1%	93.7%

* The formula for calculating FTE (for all campuses except UMF beginning AY07) is as follows:
 $\text{Undergraduate Credit Hours}/15 + \text{Professional (Law) Credit Hours}/15 + \text{Graduate Credit Hours}/9 = \text{FTE}$

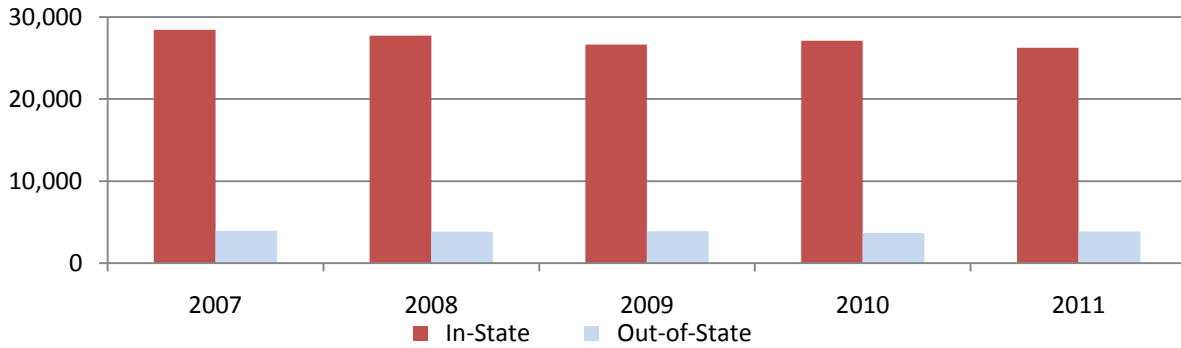
†UMF: $\text{Undergraduate Credit Hours}/16 + \text{Graduate Credit Hours}/9 = \text{FTE}$

Totals may not add to detail due to rounding

**Years 2007-2011 are academic years, i.e. Fall 2009 is in academic year 2010.

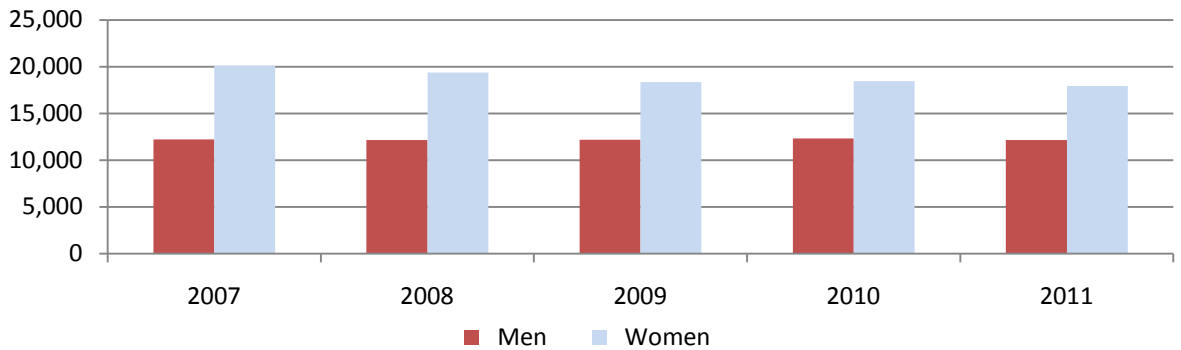
Headcount Enrollment by Residence

	2007	2008	2009	2010	2011	% of Total	% Change	
							1-Year	5-year
In-State	28,424	27,722	26,630	27,116	26,241	87.2%	-3.2%	-7.7%
Out-of-State	3,916	3,803	3,901	3,655	3,839	12.8%	5.0%	-2.0%
Total	32,340	31,525	30,531	30,771	30,080	100.0%	-2.2%	-7.0%



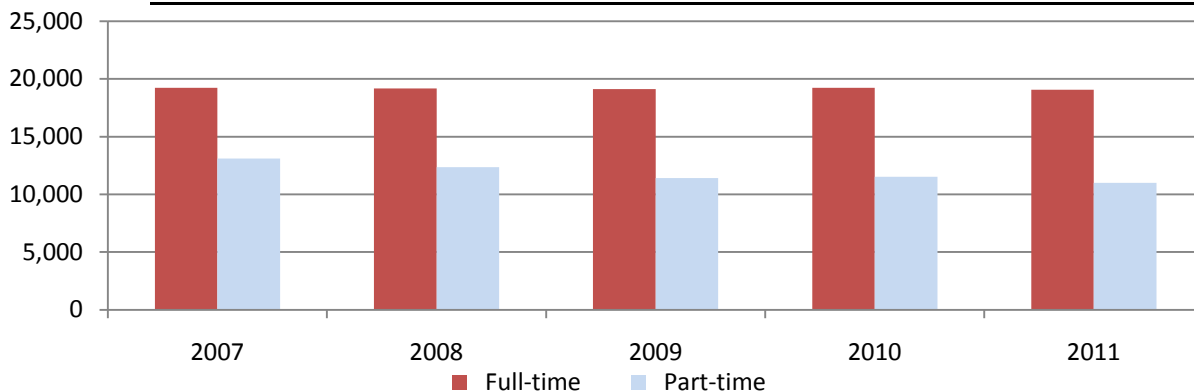
Headcount Enrollment by Gender

	2007	2008	2009	2010	2011	% of Total	% Change	
							1-Year	5-year
Men	12,234	12,147	12,178	12,332	12,137	40.3%	-1.6%	-0.8%
Women	20,106	19,378	18,353	18,439	17,943	59.7%	-2.7%	-10.8%
Total	32,340	31,525	30,531	30,771	30,080	100.0%	-2.2%	-7.0%



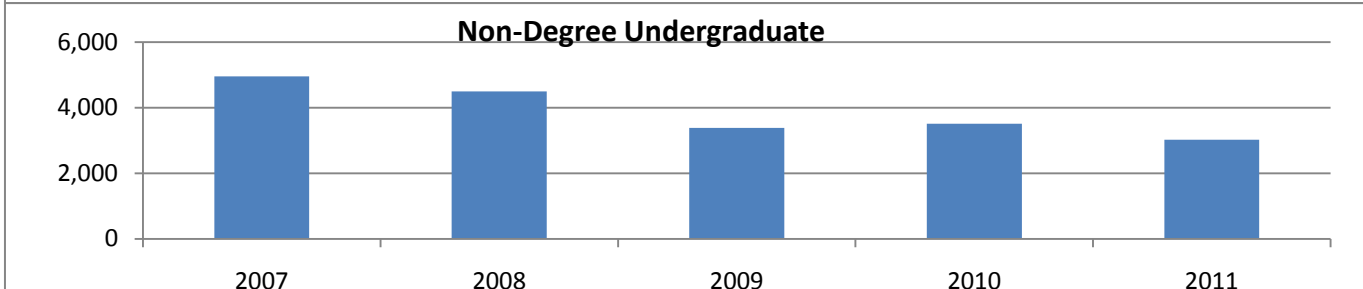
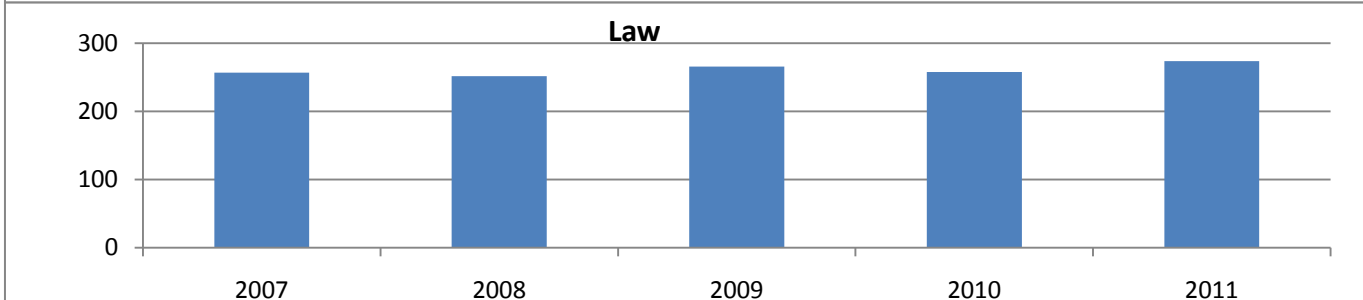
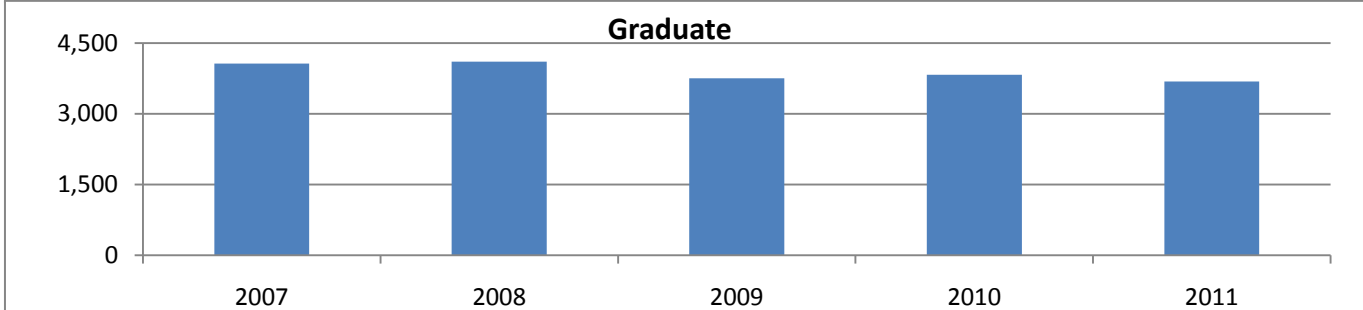
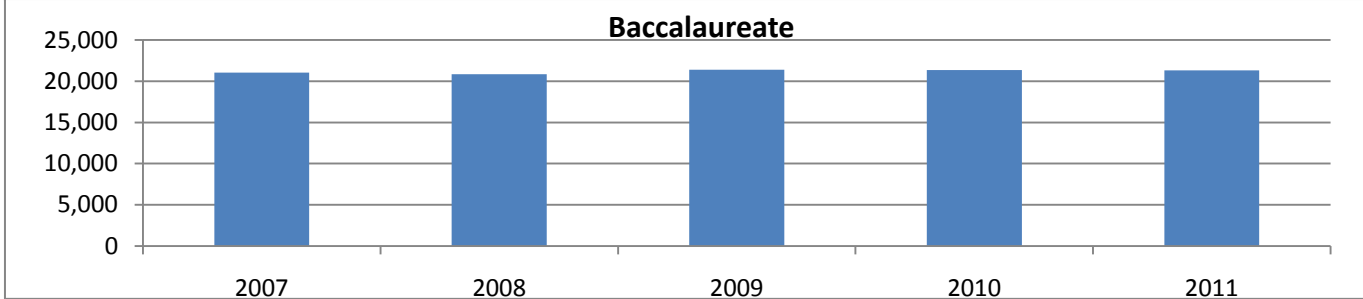
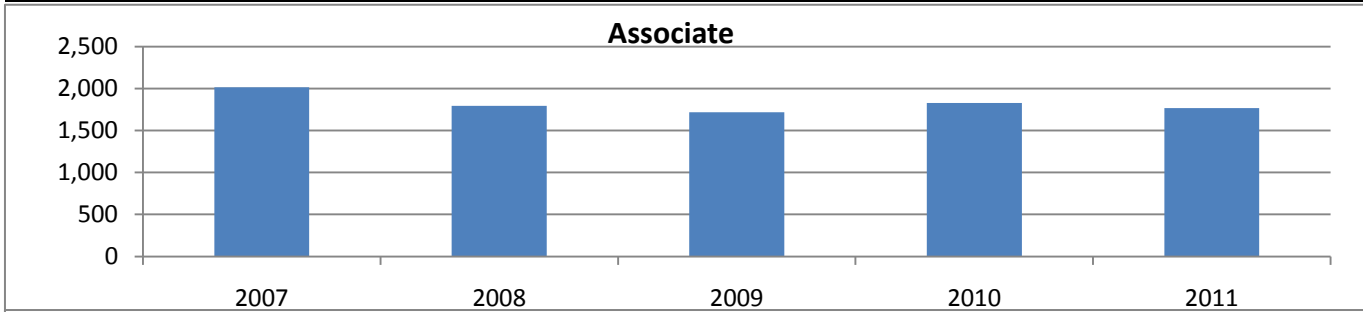
Full-Time and Part-Time Headcount Enrollment

	2007	2008	2009	2010	2011	% of Total	% Change	
							1-Year	5-year
Full-time	19,243	19,174	19,129	19,240	19,072	63.4%	-0.9%	-0.9%
Part-time	13,097	12,351	11,402	11,531	11,008	36.6%	-4.5%	-16.0%
Total	32,340	31,525	30,531	30,771	30,080	100.0%	-2.2%	-7.0%



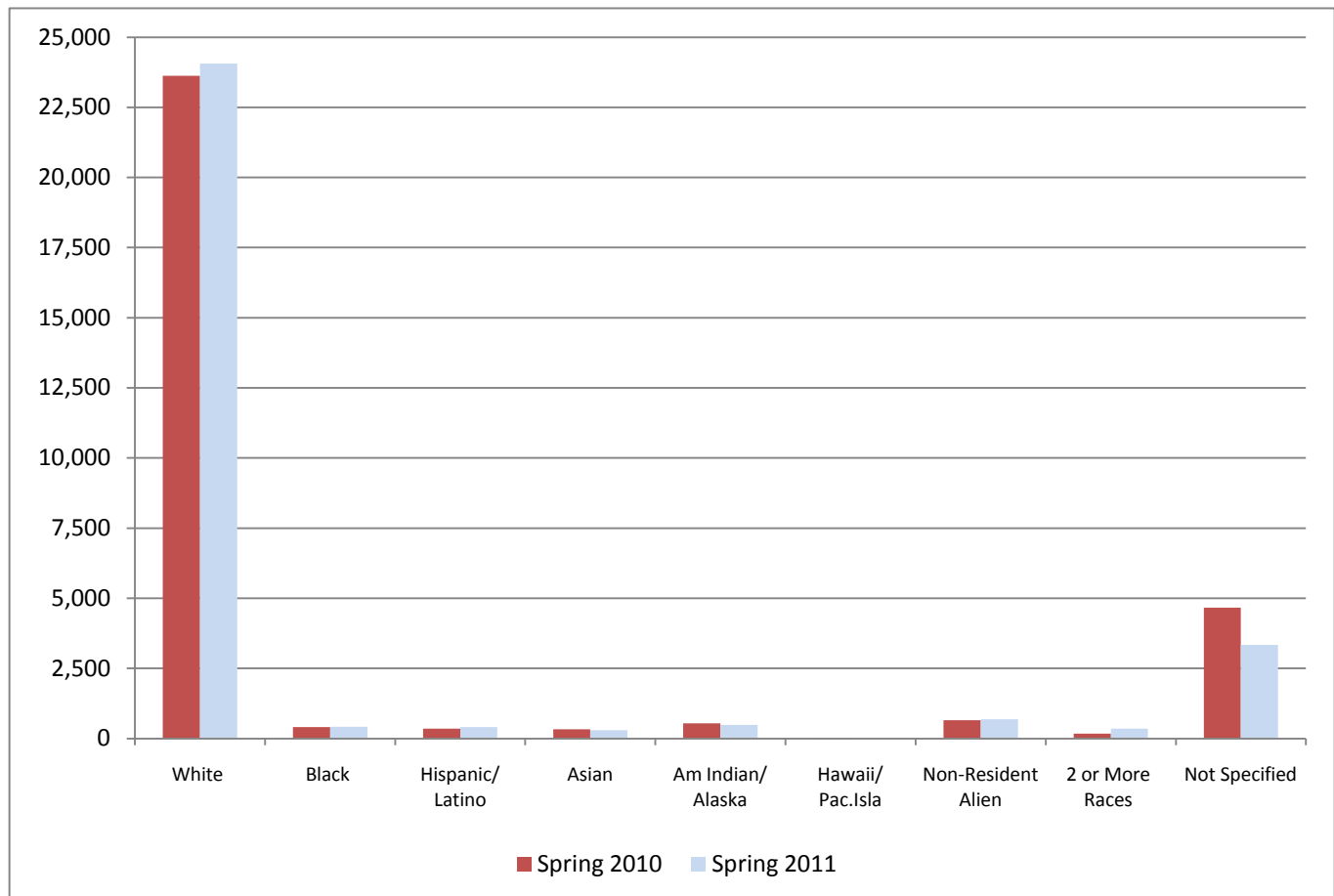
Headcount by Degree Level

	2007	2008	2009	2010	2011	% of Total	% Change	
							1-Year	5-year
Associate	2,015	1,795	1,717	1,828	1,767	5.9%	-3.3%	-12.3%
Baccalaureate	21,039	20,872	21,406	21,348	21,327	70.9%	-0.1%	1.4%
Graduate	4,066	4,104	3,753	3,828	3,683	12.2%	-3.8%	-9.4%
Law	257	252	266	258	274	0.9%	6.2%	6.6%
Non-Degree	4,963	4,502	3,389	3,509	3,029	10.1%	-13.7%	-39.0%
Total	32,340	31,525	30,531	30,771	30,080	100.0%	-2.2%	-7.0%



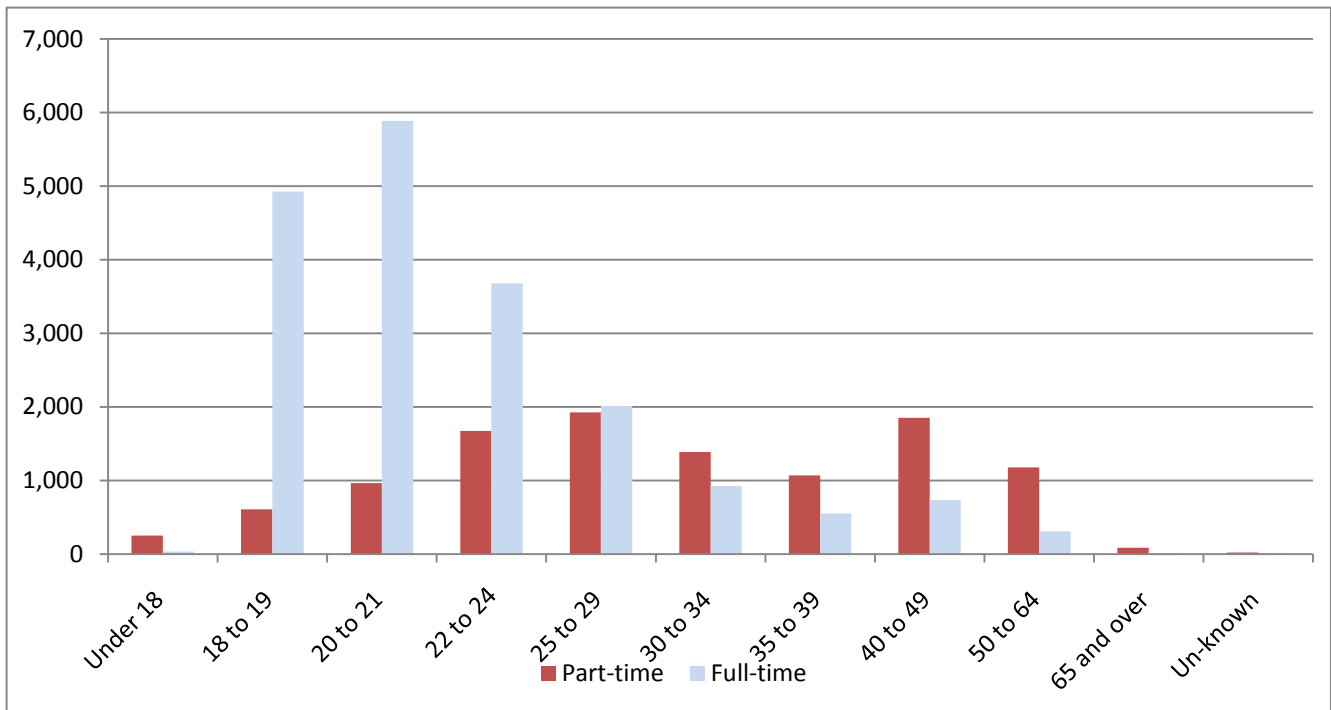
Student Headcount Enrollment by Race/Ethnicity (self-identified)

		White	Black	Hispanic/ Latino	Asian	Am Indian/ Alaska	Hawaii/ Pac.Isla	Non- Resident Alien	2 or More Races	Not Specified	Total
2010	#	23,626	412	355	333	543	2	657	173	4,670	30,771
	%	76.8%	1.3%	1.2%	1.1%	1.8%	0.0%	2.1%	0.6%	15.2%	100.0%
2011	#	24,060	425	408	302	492	7	689	351	3,346	30,080
	%	80.0%	1.4%	1.4%	1.0%	1.6%	0.0%	2.3%	1.2%	11.1%	100.0%
2010 to 2011	#	434	13	53	-31	-51	5	32	178	-1,324	-691
	%	1.8%	3.2%	14.9%	-9.3%	-9.4%	250.0%	4.9%	102.9%	-28.4%	-2.2%



Spring Headcount Enrollment by Age
Spring 2011

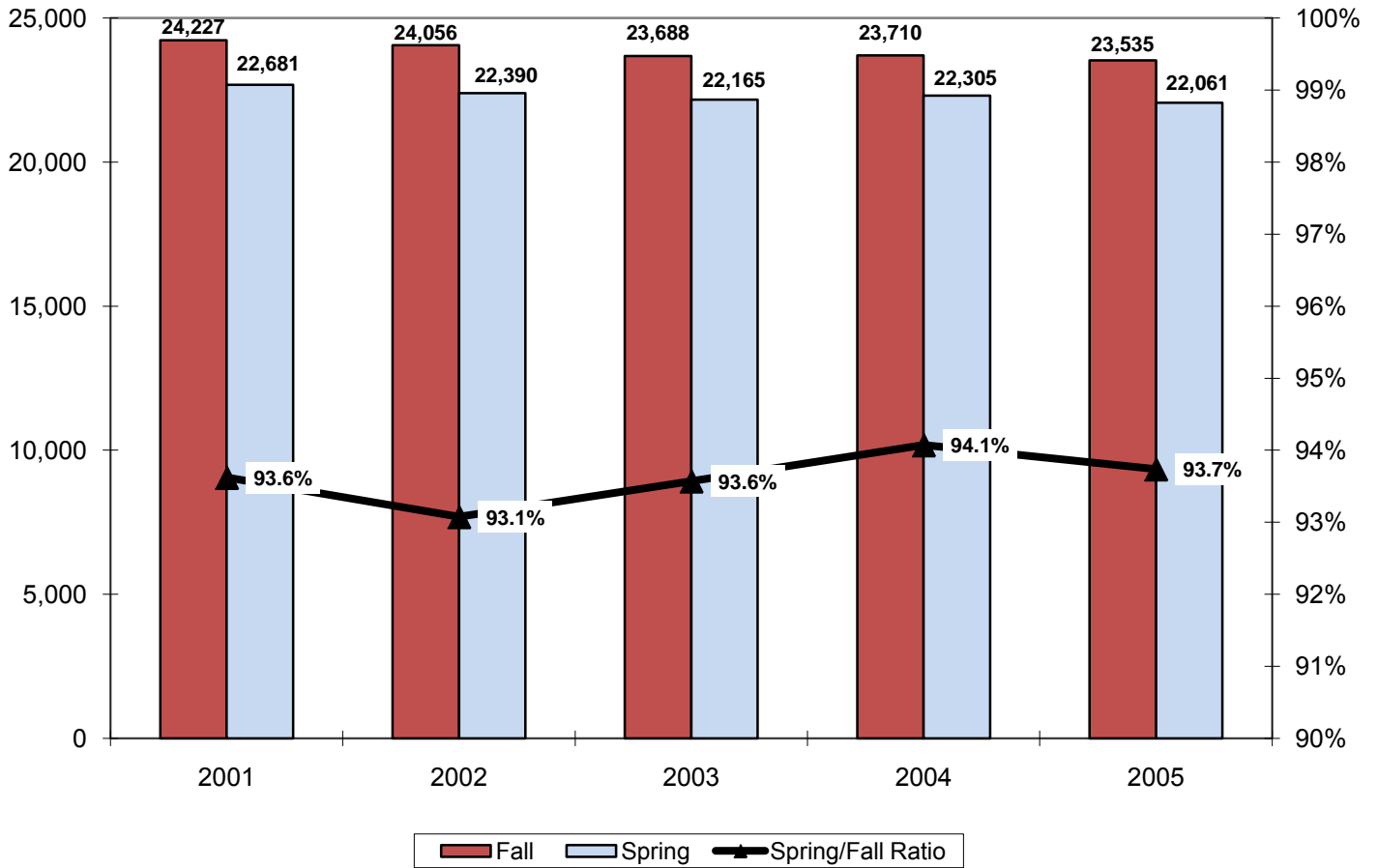
		Under 18	18 - 24	25 - 39	40 - 64	65 +	Unknown	Total
Part-time	#	252	3,245	4,379	3,025	85	22	11,008
	%	2.3%	29.5%	39.8%	27.5%	0.8%	0.2%	100.0%
Full-time	#	32	14,493	3,486	1,040	12	9	19,072
	%	0.2%	76.0%	18.3%	5.5%	0.1%	0.0%	100.0%
Total	#	284	17,738	7,865	4,065	97	31	30,080
	%	0.9%	59.0%	26.1%	13.5%	0.3%	0.1%	100.0%



5-Year Enrollment Change by Age Groups

		Under 18	18 - 24	25 - 39	40 - 64	65 and over	Unknown	Total
Spring 2007		512	18,497	8,509	4,646	121	55	32,340
Spring 2011		284	17,738	7,865	4,065	97	31	30,080
5 Year Change	#	-228	-759	-644	-581	-24	-24	-2,260
	%	-44.5%	-4.1%	-7.6%	-12.5%	-19.8%	-43.6%	-7.0%

FALL-TO-SPRING FTE ENROLLMENT*
(2007 - 2011)**



	2007	2008	2009	2010	2011
Fall	24,227	24,056	23,689	23,710	23,535
Spring	22,681	22,390	22,165	22,305	22,061
Difference	1,545	1,666	1,524	1,405	1,474
Ratio	93.6%	93.1%	93.6%	94.1%	93.7%

* The formula for calculating FTE (for all campuses except UMF beginning AY07) is as follows:
 Undergraduate Credit Hours/15 + Professional (Law) Credit Hours/15 + Graduate Credit Hours/9 = FTE

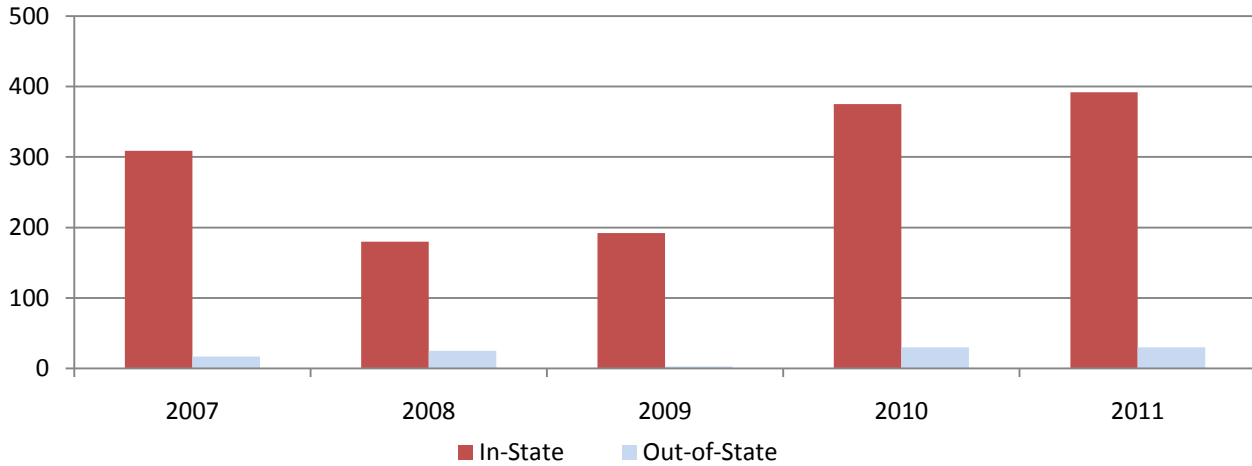
†UMF: Undergraduate Credit Hours/16 + Graduate Credit Hours/9 = FTE

Totals may not add to detail due to rounding

**Years 2007-2011 are academic years, i.e. Fall 2009 is in academic year 2010.

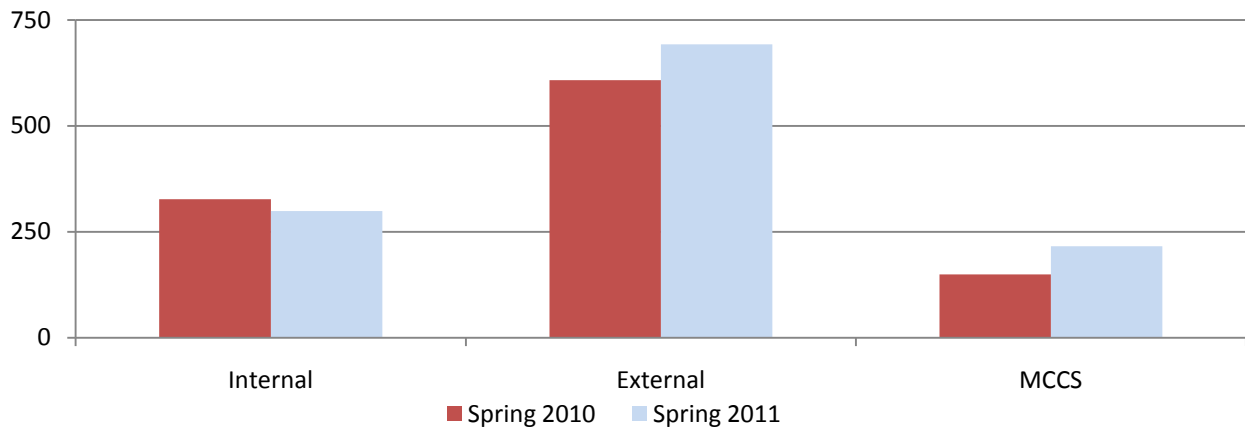
First-Time, First-Year Headcount Enrollment

	2007	2008	2009	2010	2011	% of Total	% Change	
							1-Year	5-year
In-State	309	180	192	375	392	92.9%	4.5%	26.9%
Out-of-State	17	25	3	30	30	7.1%	0.0%	76.5%
Total	326	205	195	405	422	100.0%	4.2%	29.4%



New Student Transfer Headcount*

		Spring 2010	Spring 2011	Change From 2010 to 2011	
				#	%
Internal	In-State	322	292	-30	-9.3%
	Out-of-State	5	7	2	40.0%
	Total	327	299	-28	-8.6%
External	In-State	529	604	75	14.2%
	Out-of-State	79	89	10	12.7%
	Total	608	693	85	14.0%
MCCS 1st Time Transfer (in External Transfers)		149	216	67	45.0%



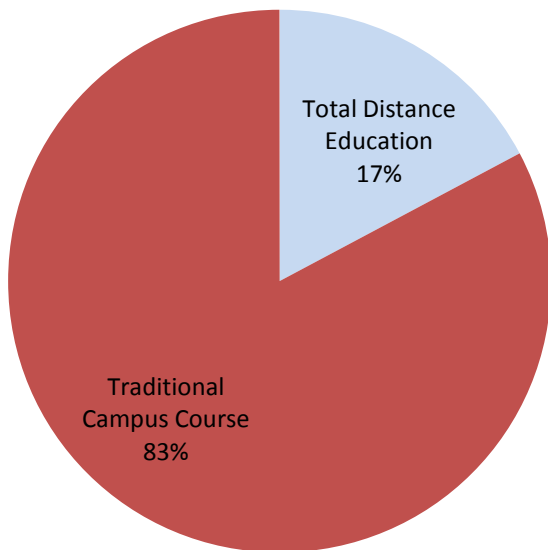
*Internal transfer students have transferred from one UMS institution to another UMS institution.

*External transfer students have transferred from a non-UMS institution into a UMS institution.

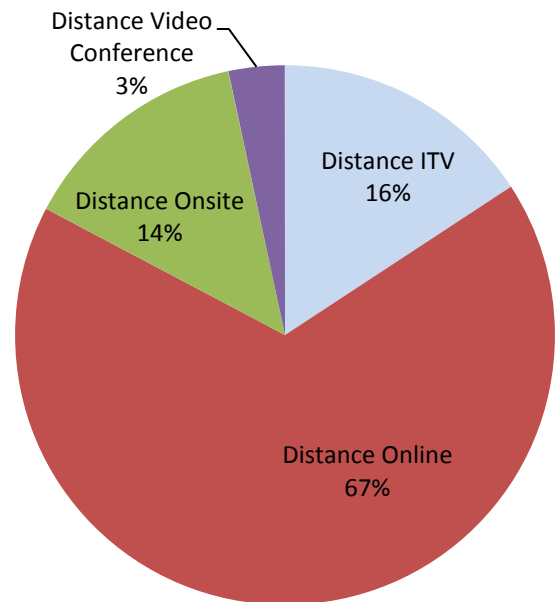
Total Credit Hours by Mode

	Spring 2010	Spring 2011	Change	
			#	%
Distance ITV	8,150.0	8,620.0	470.0	5.8%
Distance Online	33,752.0	36,693.0	2,941.0	8.7%
Distance Onsite	8,105.0	7,603.5	-501.5	-6.2%
Distance Video Conference	2,021.0	1,847.0	-174.0	-8.6%
Total Distance Education	52,028.0	54,763.5	2,735.5	5.3%
Traditional Campus Course	269,875.0	263,317.5	-6,557.5	-2.4%
Total Credit Hours	321,903.0	318,081.0	-3,822.0	-1.2%

Total Spring 2011 Credit Hours



Total Spring 2011 Distance Education Delivery Mode



Distance Education Credit Hours by Degree Level

		Credit Hours		
Distance ITV	Associate	2,055.0	% of Distance ITV	23.8%
	Baccalaureate	5,893.0		68.4%
	Non-Degree Undergraduate	584.0		6.8%
	Graduate	46.0		0.5%
	Non-Degree Graduate	42.0		0.5%
Distance ITV Subtotal		8,620.0	% of UMS Subtotal	15.7%
Distance Online	Associate	2,471.0	% of Distance Online	6.7%
	Baccalaureate	26,729.0		72.8%
	Non-Degree Undergraduate	5,260.0		14.3%
	Graduate	1,820.0		5.0%
	Non-Degree Graduate	413.0		1.1%
Distance Online Subtotal		36,693.0	% of UMS Subtotal	67.0%
Distance Onsite	Associate	1,961.0	% of Distance Onsite	25.8%
	Baccalaureate	3,896.5		51.2%
	Non-Degree Undergraduate	1,189.0		15.6%
	Graduate	518.0		6.8%
	Non-Degree Graduate	39.0		0.5%
Distance Onsite Subtotal		7,603.5	% of UMS Subtotal	13.9%
Distance Video Conference	Associate	566.0	% of Distance Video Conference	30.6%
	Baccalaureate	684.0		37.0%
	Non-Degree Undergraduate	202.0		10.9%
	Graduate	320.0		17.3%
	Non-Degree Graduate	75.0		4.1%
Distance Video Conference Subtotal		1,847.0	% of UMS Subtotal	3.4%
UMS Subtotal		54,763.5	% of UMS Subtotal	100.0%