



<b>Document Generation Date</b>	8/3/2009
<b>Last Changed by</b>	System Office
<b>Status</b>	Final

## **Using Transfer Course Equivalencies**

### **Concept**

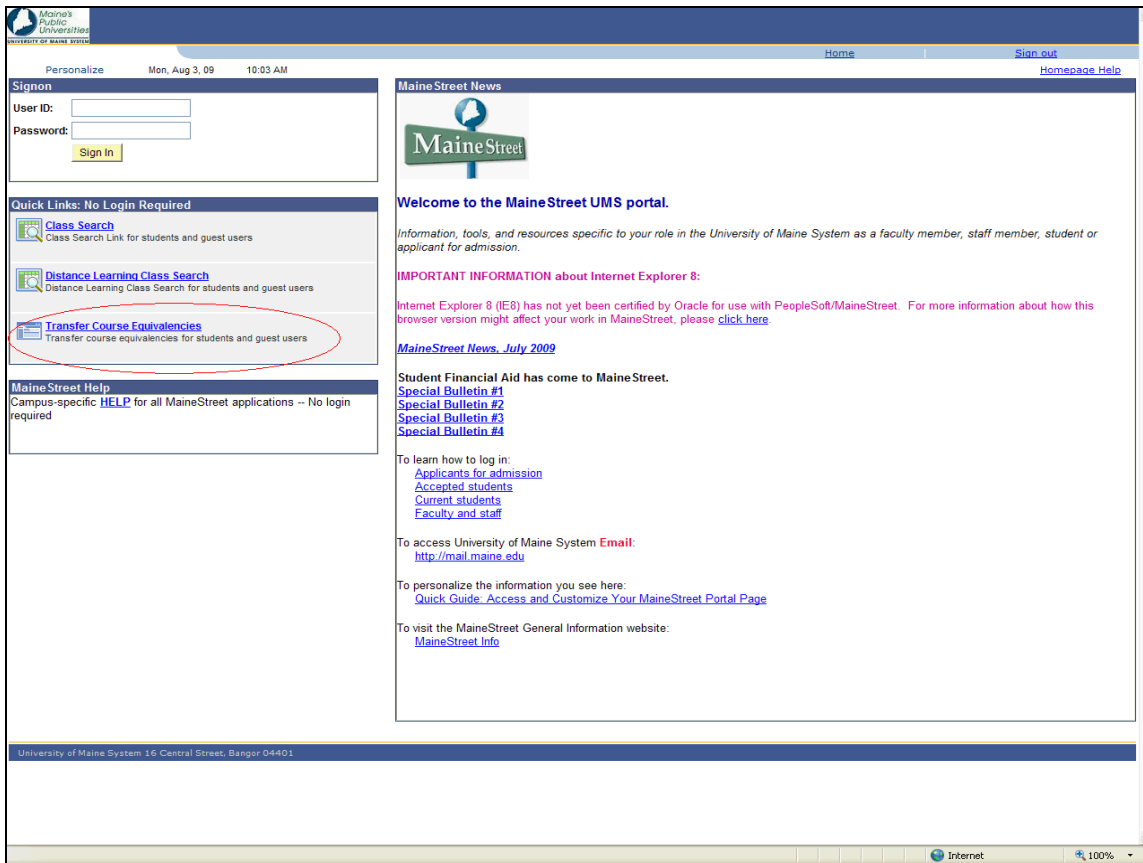
This Transfer Course Equivalency tool is designed to help prospective applicants, current students and faculty advisors find out how courses taken elsewhere will be treated when they are transferred to any of the seven University of Maine System universities. It will be equally useful to students who have never attended and for students who are contemplating taking a course elsewhere during their undergraduate career.

UMS transfer policy is displayed in the tool and there are several notes to the effect that exceptions do apply in individual circumstances. Each university has some program-specific rules that may change the equivalency from what is displayed in these lists. We cannot tell a student these specifics until we know the program and term of interest. The equivalents listed are not a guarantee and should be used as a guide. The Transfer Officers at all campuses welcome your questions. Their contact information is available from links on the pages.

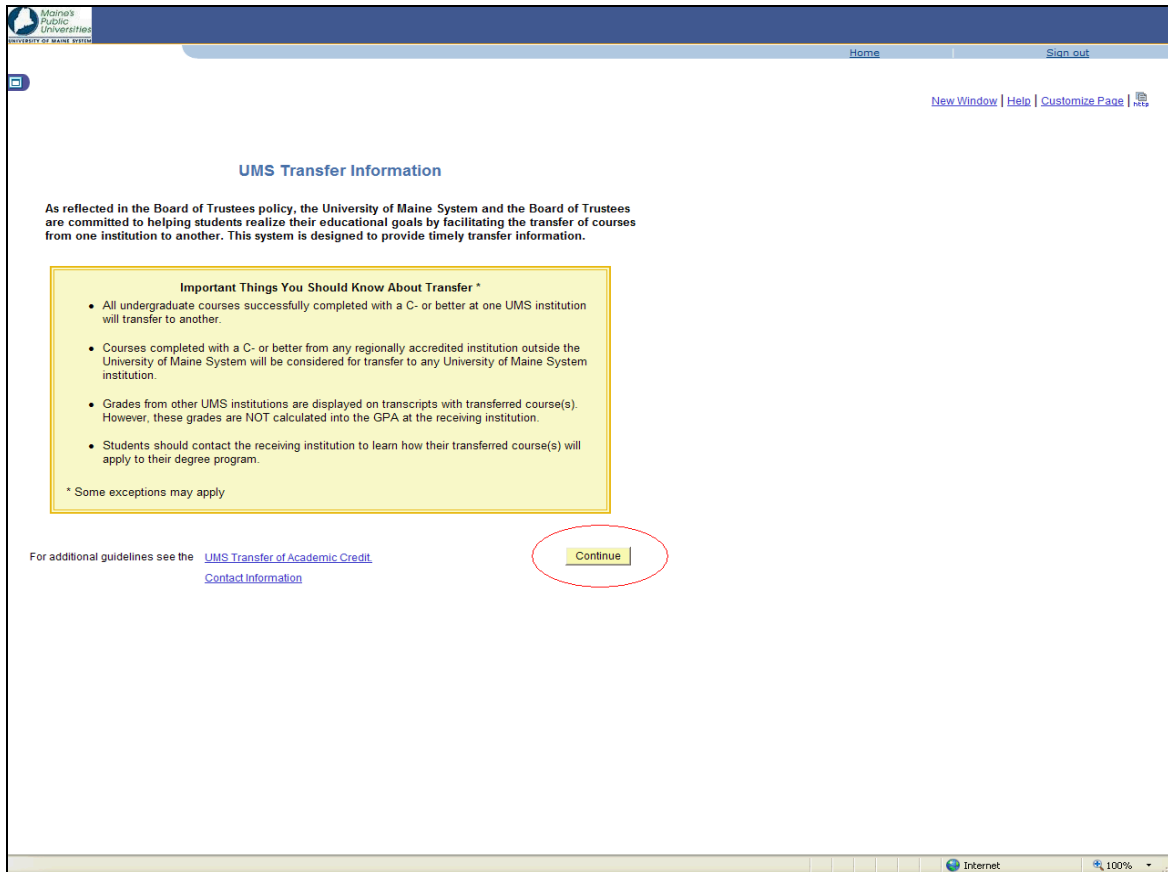
# Process Document Using Transfer Course Equivalencies



## Procedure



Step	Action
1.	It is not necessary to login to the MaineStreet portal to use <b>Transfer Course Equivalencies</b> lookup. Click the <b>Transfer Course Equivalencies</b> link on the portal login page to begin. <a href="#">Transfer Course Equivalencies</a>



**UMS Transfer Information**

As reflected in the Board of Trustees policy, the University of Maine System and the Board of Trustees are committed to helping students realize their educational goals by facilitating the transfer of courses from one institution to another. This system is designed to provide timely transfer information.

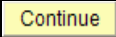
**Important Things You Should Know About Transfer \***

- All undergraduate courses successfully completed with a C- or better at one UMS institution will transfer to another.
- Courses completed with a C- or better from any regionally accredited institution outside the University of Maine System will be considered for transfer to any University of Maine System institution.
- Grades from other UMS institutions are displayed on transcripts with transferred course(s). However, these grades are NOT calculated into the GPA at the receiving institution.
- Students should contact the receiving institution to learn how their transferred course(s) will apply to their degree program.

\* Some exceptions may apply

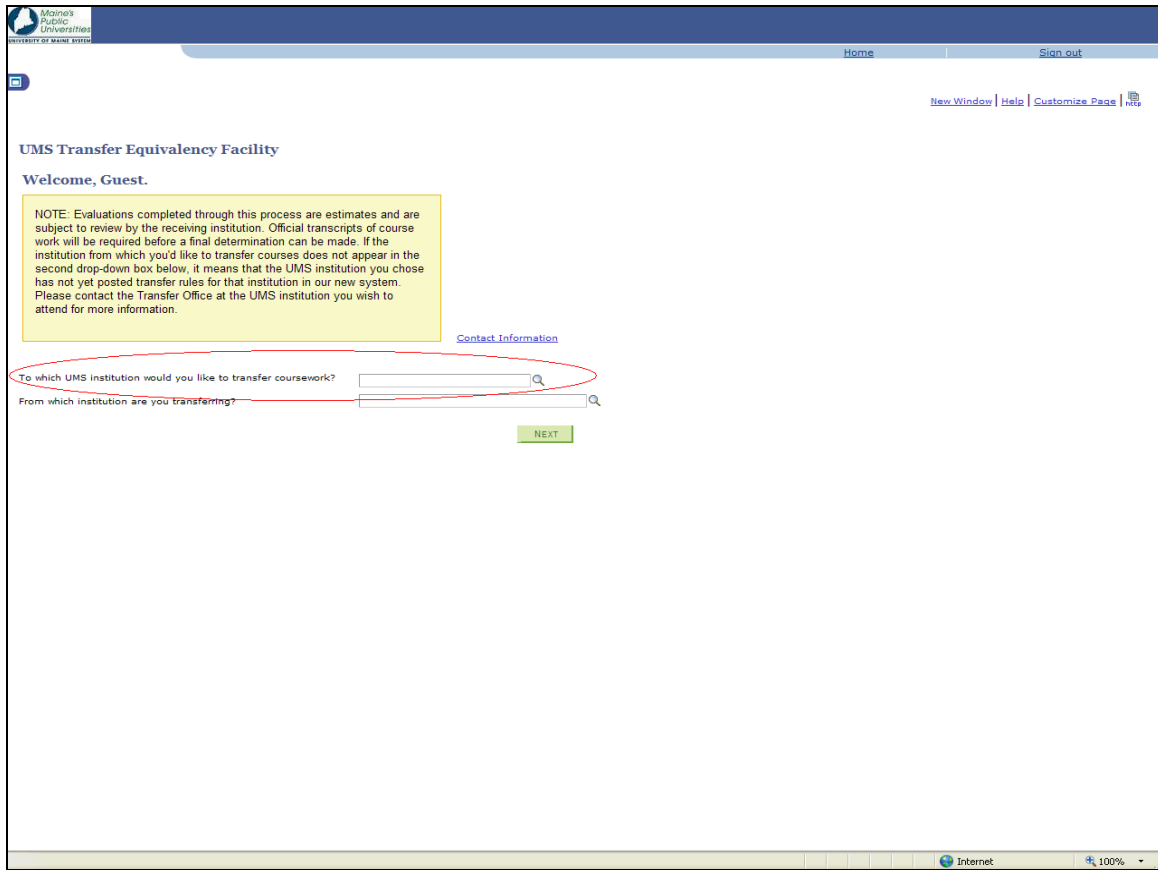
For additional guidelines see the [UMS Transfer of Academic Credit](#) [Contact Information](#)


[Continue](#)

Step	Action
2.	On the <b>UMS Transfer Information</b> page, click the <i>Continue</i> button. 

# Process Document

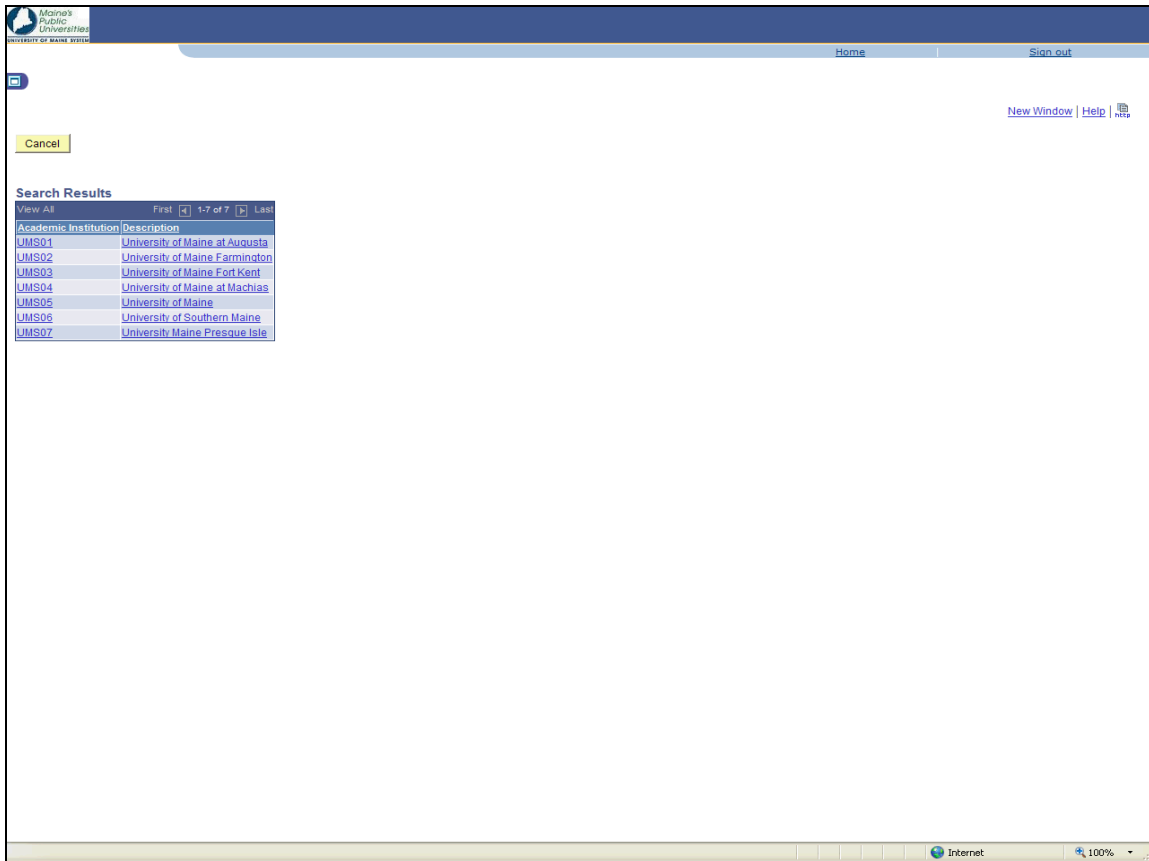
## Using Transfer Course Equivalencies



Step	Action
3.	On the <b>UMS Transfer Equivalency Facility</b> page, lookup the UMS institution to which you would like to transfer coursework. 




# Process Document Using Transfer Course Equivalencies

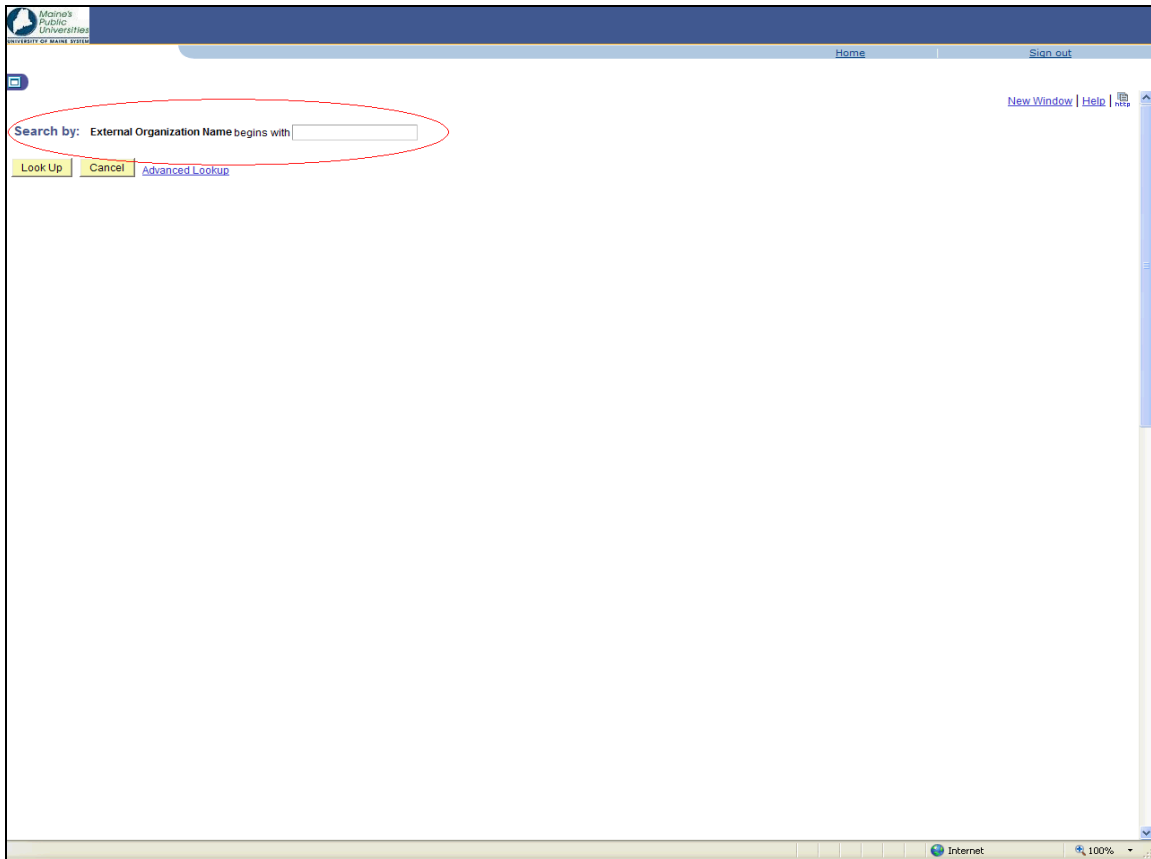


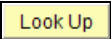
Step	Action
4.	On the Search Results page select the appropriate institution.

# Process Document Using Transfer Course Equivalencies



Step	Action
5.	Next, look up the institution you are transferring from. 



Step	Action
6.	To help narrow your search results, enter the first few letters of institution's name.
7.	Click the <b>Look Up</b> button. 

# Process Document

## Using Transfer Course Equivalencies



[Home](#)
[Sign out](#)

### Transfer Equivalency Results

This course equivalency system is constantly changing and growing. It is meant to be used as a guide. We add institutions and courses frequently. Sometimes our own courses change, which may change a previously listed equivalency. Some exceptions to the equivalencies you see here may apply.

If the courses you have taken at this institution are not listed below, it means that the UMS institution you chose has not yet posted transfer rules for that particular course. At this time, complex course combinations, often involving lecture/lab or multi-semester course sequences do not display to best advantage here. If you have any questions, please contact the transfer office at the UMS institution you wish to attend.

[Return to Institution Page](#)
[Contact Information](#)

[From Northern Maine CC](#)
[To University of Maine Machias](#)

Click on the column heading to sort any column				
Source Course	Source Course Title	Transfer Equiv	Course Title	Gen Ed or Core Requirement
AAM 111	AAM 111	GEL XXX	General elective	
ABF 111	Automotive Body Repair I	GEL XXX	General elective	
ABF 121	Automotive Body Repair III	GEL XXX	General elective	
AC 010	PRIN ACCOUNTING I	ACC 201	Financial Accounting	
AC 020	PRIN ACCT II	ACC 202	Managerial Accounting	
AC 033	AC 33	ACC 311	Individual Income Tax	
ACC 111	Principles of Accounting I	ACC 201	Financial Accounting	
ACC 121	Principles of Accounting II	ACC 202	Managerial Accounting	
ACC 211	Intermediate Accounting I	ACC 301	Intermediate Accounting I	
ACC 214	Federal Taxation I	ACC 311	Individual Income Tax	
ACC 221	Intermediate Accounting II	ACC 302	Intermediate Accounting II	
ACC 225	Federal Taxation II	ACC 312	Business Income Tax	
ACC 230	ACC 230	ACC XXX	Accounting elective	
ACC 240	Income Tax Preparation (VITA)	ACC XXX	Accounting elective	
BA 013	BA 13	MAR 215	Marketing Channels	
BA 020	BA 20	BUS XXX	Business elective	
BA 031	BA 31	MAN XXX	Management elective	
BA 044	BA 44	MAN 232	Supervision	
BA 047	BA 47	MAR 101	Marketing & Entrepreneurship	Satisfies a Core Req't in Humans in Social Context
BUS 113	Sales Fundamentals	MAR 323	Personal Selling	
BUS 117	Business Law I	BUS 221	Business Law I	Satisfies a Core Req't in Humans in Social Context
BUS 129	BUS 129	MAN 301	Management	Satisfies a Core Req't in Humans in Social Context

Step	Action
8.	<p>On the <b>Transfer Equivalency Results</b> page, all the courses for which equivalents have been determined will be displayed. Scroll down to find the course in which you are interested. For institutions with long lists of equivalents you may find it useful to sort any of the columns by clicking on the column header.</p> <p>When finished reviewing the course equivalency list, you may exit the system by clicking on the <b>Sign out</b> link in the upper right hand corner, or click the <b>Return to Institution Page</b> button to view equivalents for another institution.</p>
9.	<b>End of Procedure.</b>