



University of Maine System Student Profiles

February 7, 2008



Maine's
Public
Universities

UNIVERSITY OF MAINE SYSTEM

Office of Planning and Policy Analysis

University of Maine System

Student Profiles

Highlights

Headcount Profile

- While enrollment has grown significantly over the past 40 years, there has been little change in male enrollment, and a dramatic rise in the number of women attending a UMS institution. Female enrollment has grown by 91% (9,869 women) since Fall 1972, while male enrollment has decreased by 0.5% (-61 men.)
- The average age of UMS students has increased from 25.4 in 1982 to 27.2 in 2007, but down from a high of 28.9 years in 1995.
- The average credit load for a UMS student has decreased from 11.4 credits in 1974 to 10.3 credits in 2005. The average credit hour load dipped to a low of 9.4 credits per student in 1995 and 1996.
- The more traditional undergraduate and graduate students are making up a larger proportion of UMS enrollment over the past 24 years, while non-degree student enrollments are decreasing. The law student proportions are remaining steady.
- Full-time enrollment has grown by 3,354 students since 1982 (19%). Full-time males increased by 260 (3%) students and full-time female enrollment grew by 3,094 students (35%). There were also increases in part-time enrollment of 2,516 students (24%), but part-time enrollment has declined from a high of nearly 15,000 students in 1990. Most of the increase since 1982 was by women increasing 2,368 (37%). Part-time males increased by 148 students (4%).
- Male full-time undergraduate enrollment has increased by 82 (1%) students while female full-time undergraduate enrollment has increased by 2,234 (28%) students since 1982. Male part-time undergraduate enrollment increased by 443 (30%) students, while female part-time undergraduate enrollment grew by 1,788 (76%).
- Graduate enrollment has almost tripled from 1982, growing from 1,622 students to 4,384 students. Of the 4,351 graduate students enrolled in Fall 2007, 3,042 were women, 2,220 (270%) more than the 822 enrolled in 1982. Male students increased by 542 (68%), from 800 to 1,342. Graduate student enrollment nearly doubled from 1985 to 1990.

- Student enrollment typically falls during the spring semester. (There are some exceptions among the campuses.) Proportionally there are more students continuing from the fall semester to the spring semester now than in 1996.
- There has been significant growth in non-traditional students in all age groups except 30-34 year olds. Enrollment of students between the ages of 40-64 grew 179%, from 1,626 in 1982 to 4,536 in 2007. Enrollment of students under 18 has grown by 181% (602 students).
- Since 1982, 22-24 year olds grew by almost 2,000 students, of which 81% of that growth (1,418 students) was women. 18-19 year olds grew by 465, enrollment of women grew by 423 students, while male enrollment grew by 42 students. Enrollment of those over 65 declined by 28 students.

Entering Class Profile

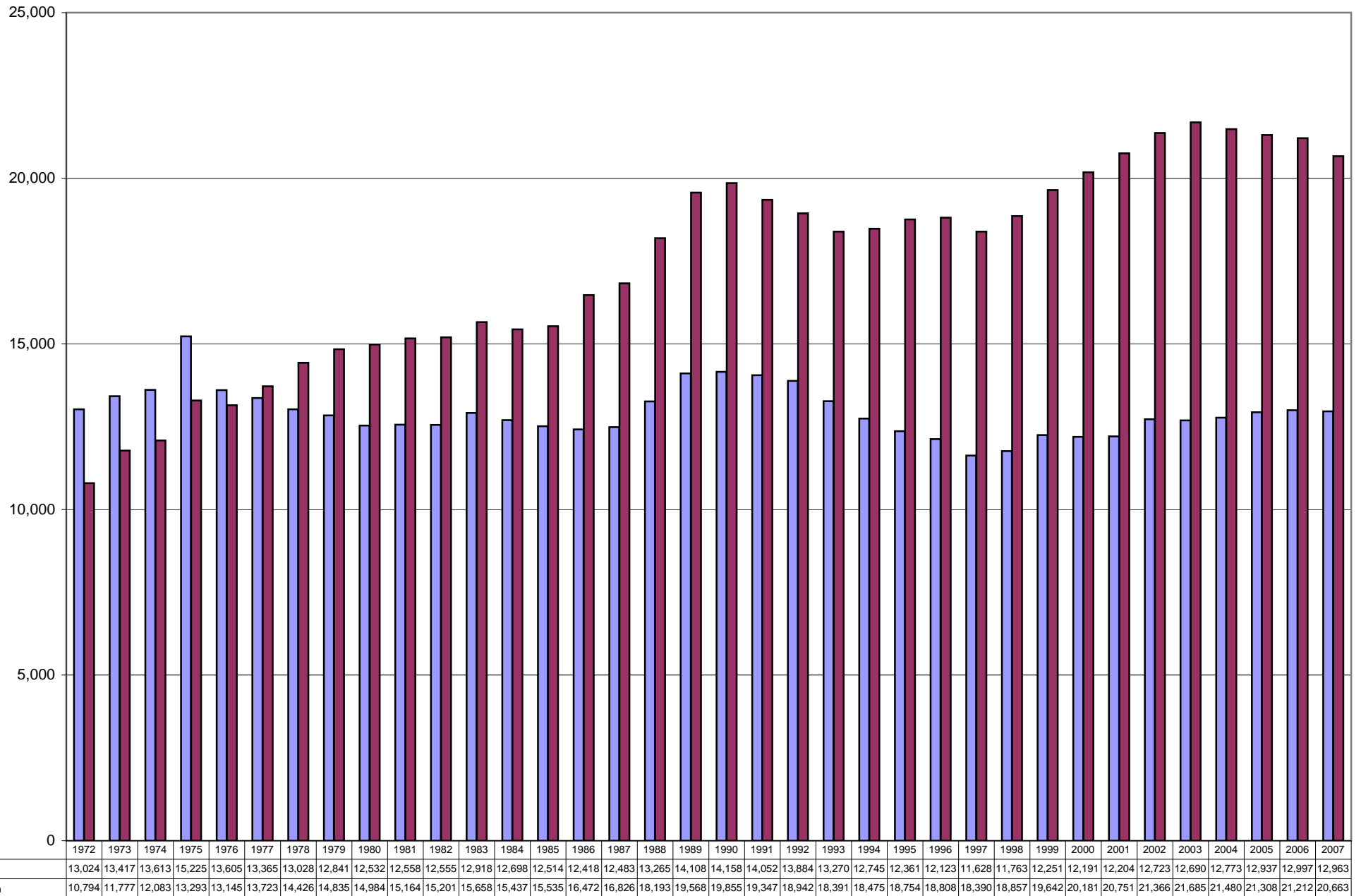
- First-time, first year student enrollment has remained relatively stable over the past 40 years. Historically, the entering class is making up a smaller amount of the UMS student body, from 17% in 1976 to 13% in 2007, as the overall headcount grows.
- Applications to UMS have increased between 1994 and 2006, as have the number of accepted students. The number of those applicants enrolling has remained near 4,000 students.
- The UMS first-year retention rate has remained near 70% over the past 19 years.

Degrees Conferred Profile

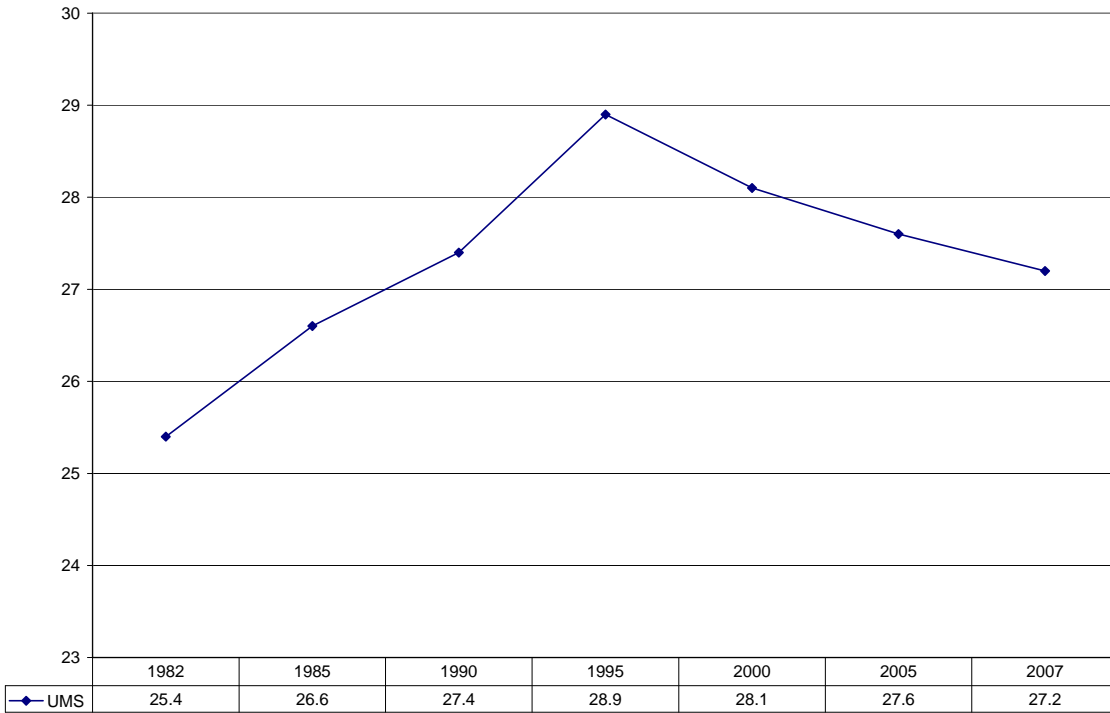
- Total degrees conferred have grown by more than 2,500 since 1969, from 3,066 conferred in 1969 to 5,612 in 2007.
- Graduation rates by university vary year to year, but historically they keep within a consistent range.
- There have been some significant changes in degrees conferred by program clusters over the past 15 years. Biological sciences, communication, computer and information sciences, education, fine and applied arts, health profession, law, letters, mathematics, physical sciences, and psychology programs have all grown dramatically. Agriculture and natural resources, business and management, engineering, foreign languages, human development, parks and recreation, public affairs, and the social sciences programs have all experienced decreases in the amount of degrees completed.

Headcount Profile

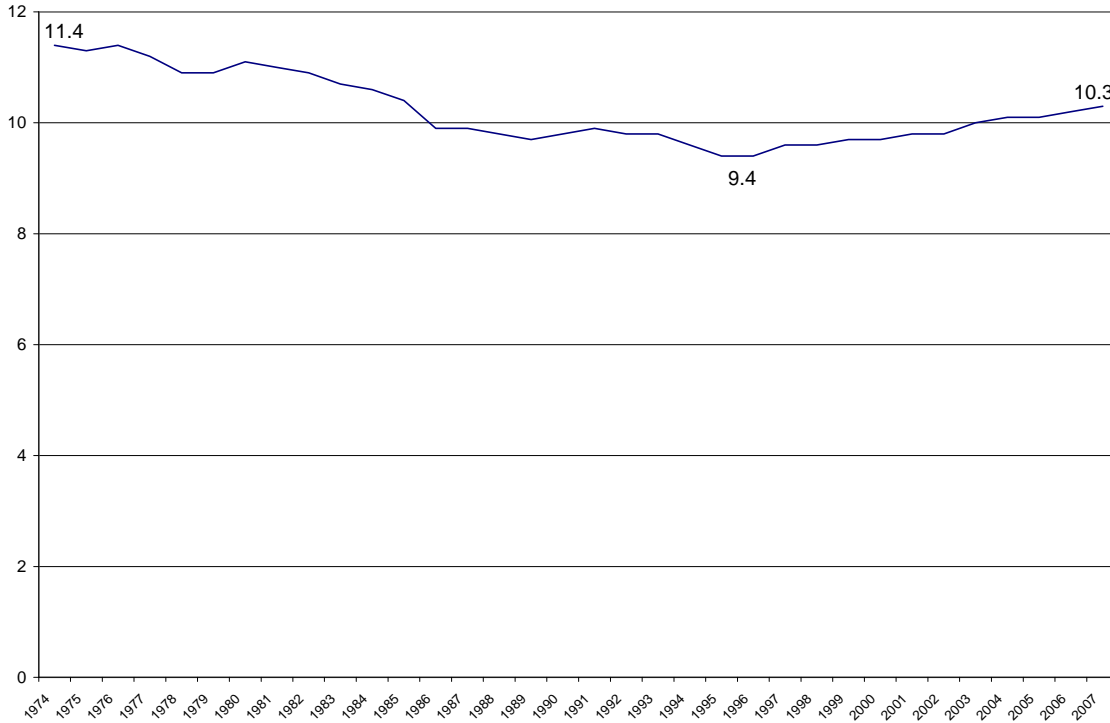
University of Maine System Headcount Enrollment by Gender 1972-2007



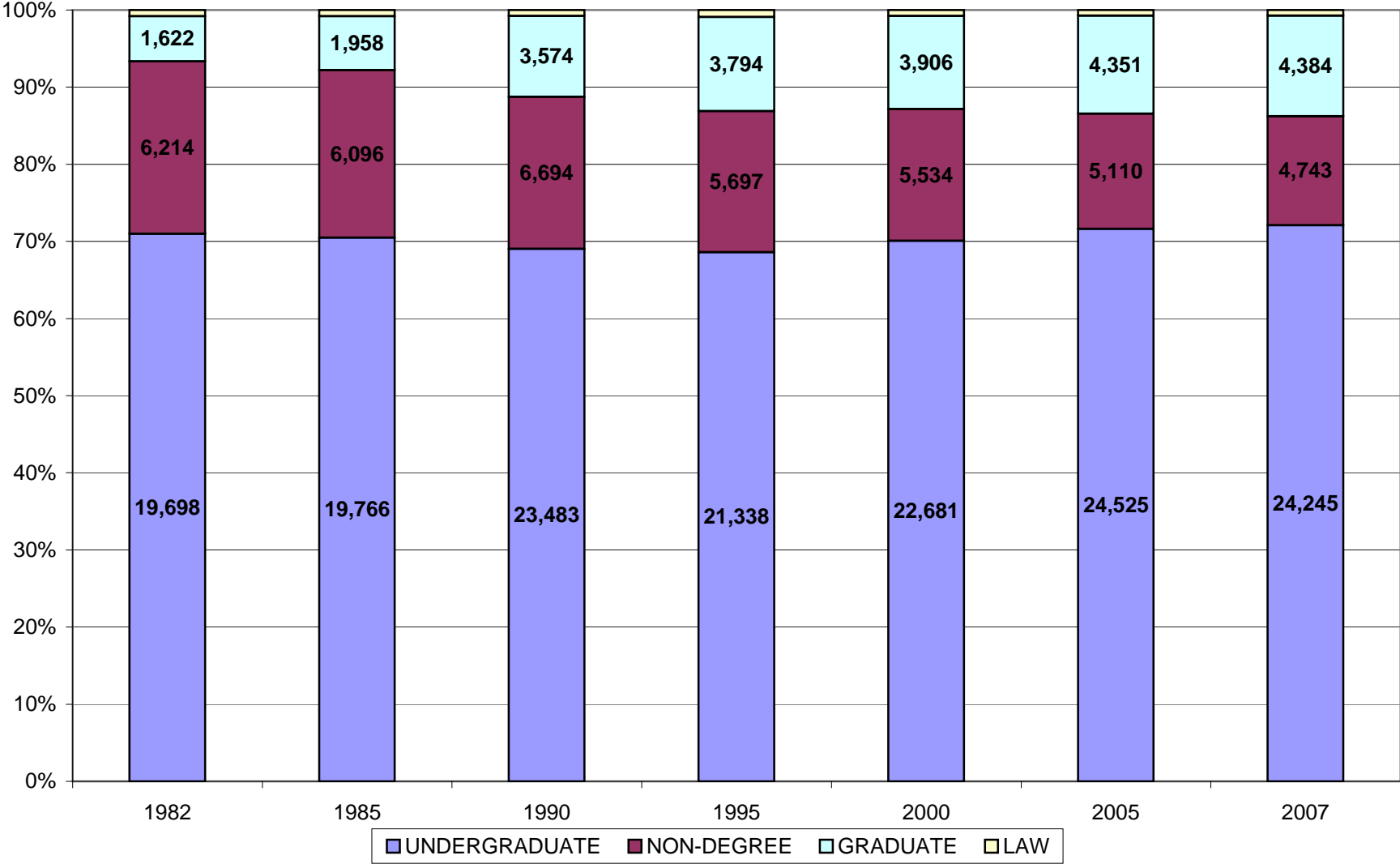
Average age of UMS Student



Average Credit Hours per UMS Student



Ratio of UMS Enrollment by Degree Pursued: 1982 - 2007



UMS Student Headcount by Enrollment Status 1982 - 2007



Total Headcount by Gender by Enrollment Status 1982 - 2007

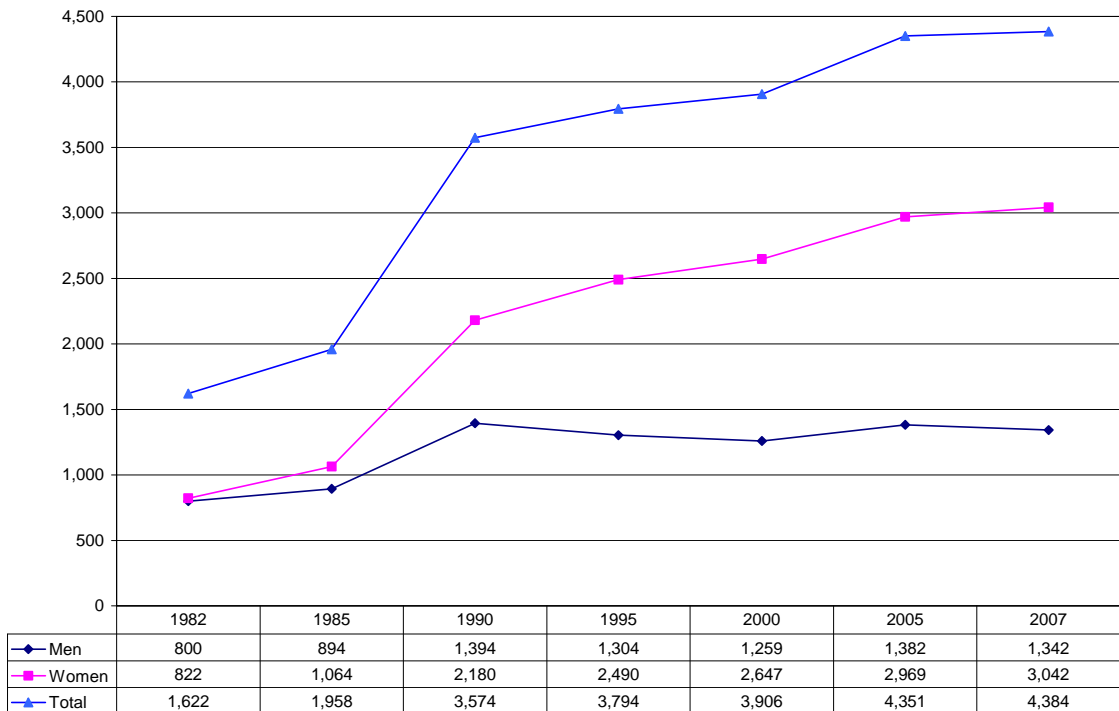


UMS Undergraduate Student Headcount Enrollment by Gender* 1982 - 2007



* Excludes non-degree students

UMS Graduate Student Headcount Enrollment by Gender 1982 - 2007



FALL-TO-SPRING FTE ENROLLMENT*

(1996 - 2006)**

	<u>1996</u>	<u>1997</u>	<u>1998</u>	<u>1999</u>	<u>2000</u>	<u>2001</u>	<u>2002</u>	<u>2003</u>	<u>2004</u>	<u>2005</u>	<u>2006</u>
UM											
Fall	7,583	7,508	7,156	7,356	7,719	7,980	8,335	8,665	8,923	9,054	9,204
Spring	7,007	7,018	6,803	6,995	7,378	7,648	8,035	8,517	8,532	8,544	8,672
Difference	576	490	353	361	341	332	300	148	391	511	532
Ratio	92.4%	93.5%	95.1%	95.1%	95.6%	95.8%	96.4%	98.3%	95.6%	94.4%	94.2%
UMA											
Fall	2,719	2,488	2,398	2,419	2,736	2,706	2,690	2,769	2,936	2,806	2,759
Spring	2,514	2,383	2,191	2,478	2,664	2,577	2,622	2,755	2,795	2,811	2,610
Difference	205	105	207	(59)	72	129	68	14	141	(5)	149
Ratio	92.5%	95.8%	91.4%	102.4%	97.4%	95.2%	97.5%	99.5%	95.2%	100.2%	94.6%
UMF											
Fall	2,048	2,070	2,024	2,084	2,105	2,123	2,117	2,093	2,116	2,087	2,149
Spring	1,899	1,918	1,914	1,994	2,014	1,968	1,977	1,952	1,986	1,937	2,027
Difference	149	152	110	90	91	155	140	141	130	150	122
Ratio	92.7%	92.7%	94.6%	95.7%	95.7%	92.7%	93.4%	93.3%	93.8%	92.8%	94.3%
UMFK											
Fall	495	545	497	589	729	731	694	708	779	907	919
Spring	445	506	470	538	686	626	560	625	750	830	815
Difference	50	40	27	52	43	105	134	84	29	77	104
Ratio	89.9%	92.8%	94.5%	91.3%	94.2%	85.7%	80.6%	88.2%	96.3%	91.5%	88.7%
UMM											
Fall	624	647	641	640	606	605	653	680	754	666	626
Spring	609	642	599	607	584	571	636	690	719	664	607
Difference	15	5	42	34	22	35	17	(10)	36	3	19
Ratio	97.6%	99.3%	93.5%	94.8%	96.4%	94.3%	97.4%	101.5%	95.3%	99.6%	97.0%
UMPI											
Fall	1,018	1,053	1,060	1,036	1,081	1,135	1,058	1,158	1,207	1,293	1,242
Spring	974	1,002	938	963	1,038	1,000	941	1,050	1,094	1,159	1,146
Difference	44	51	122	73	44	135	118	109	113	135	96
Ratio	95.7%	95.1%	88.5%	92.9%	96.0%	88.1%	88.9%	90.6%	90.6%	89.6%	92.3%
USM											
Fall	5,814	5,982	6,234	6,386	6,496	6,658	6,844	7,296	7,223	7,305	7,348
Spring	5,380	5,559	5,752	5,886	6,036	6,157	6,394	6,733	6,761	6,810	6,785
Difference	434	423	482	500	460	501	450	563	462	495	563
Ratio	92.5%	92.9%	92.3%	92.2%	92.9%	92.5%	93.4%	92.3%	93.6%	93.2%	92.3%
TOTAL											
Fall	20,301	20,293	20,010	20,510	21,472	21,938 #	22,391	23,369	23,938	24,118	24,247
Spring	18,828	19,028	18,667	19,460	20,401	20,546 #	21,164	22,322	22,637	22,754	22,662
Difference	1,473	1,265	1,343	1,050	1,071	1,392	1,227	1,047	1,302	1,364	1,585
Ratio	92.7%	93.8%	93.3%	94.9%	95.0%	93.7%	94.5%	95.5%	94.6%	94.3%	93.5%

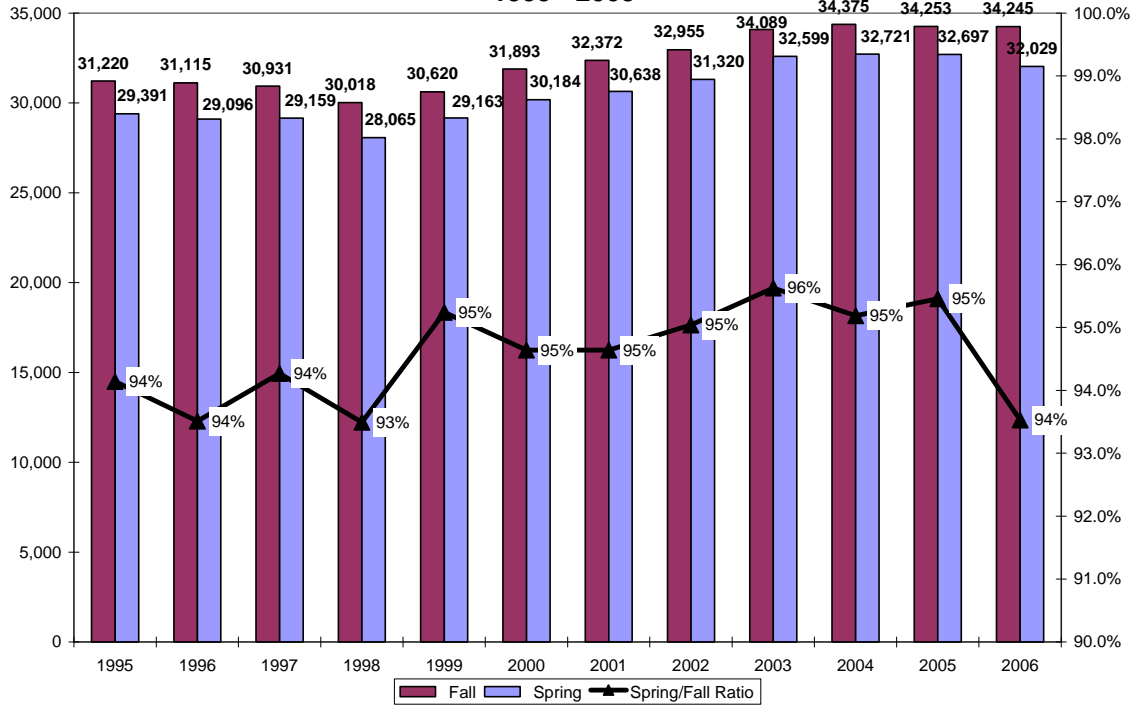
* The formula for calculating FTE is as follows:

Undergraduate Credit Hours/15 + Professional (Law) Credit Hours/15 + Graduate Credit Hours/9 = FTE

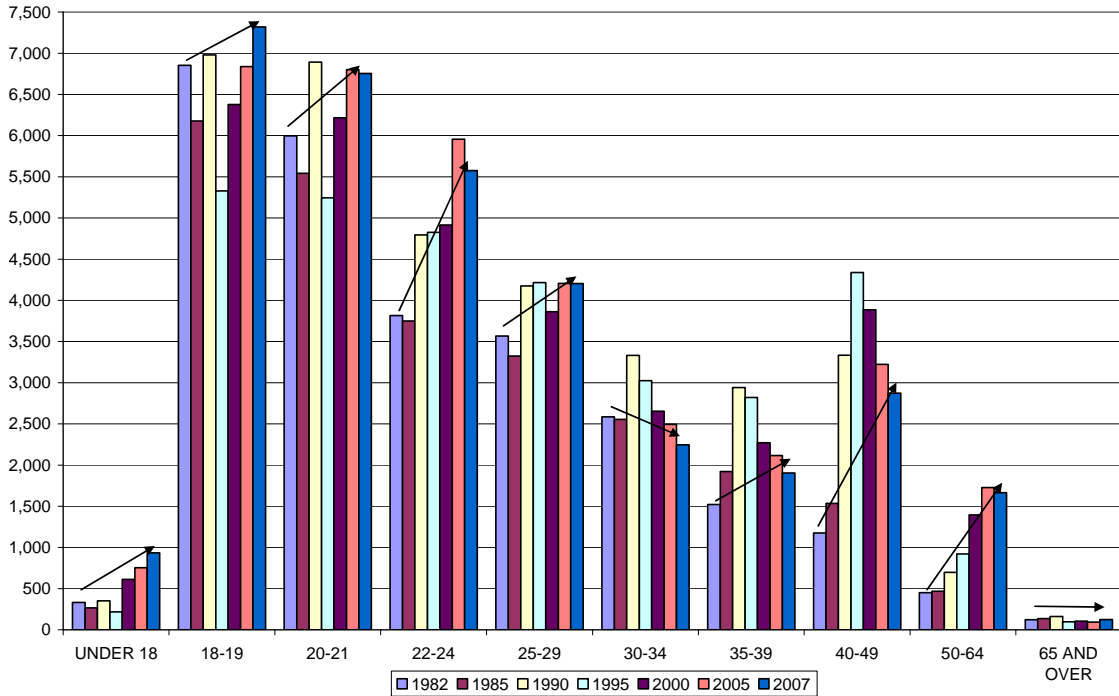
Totals may not add to detail due to rounding

**Years 1996-2006 are academic years, i.e. Fall 2005 is in academic year 2006.

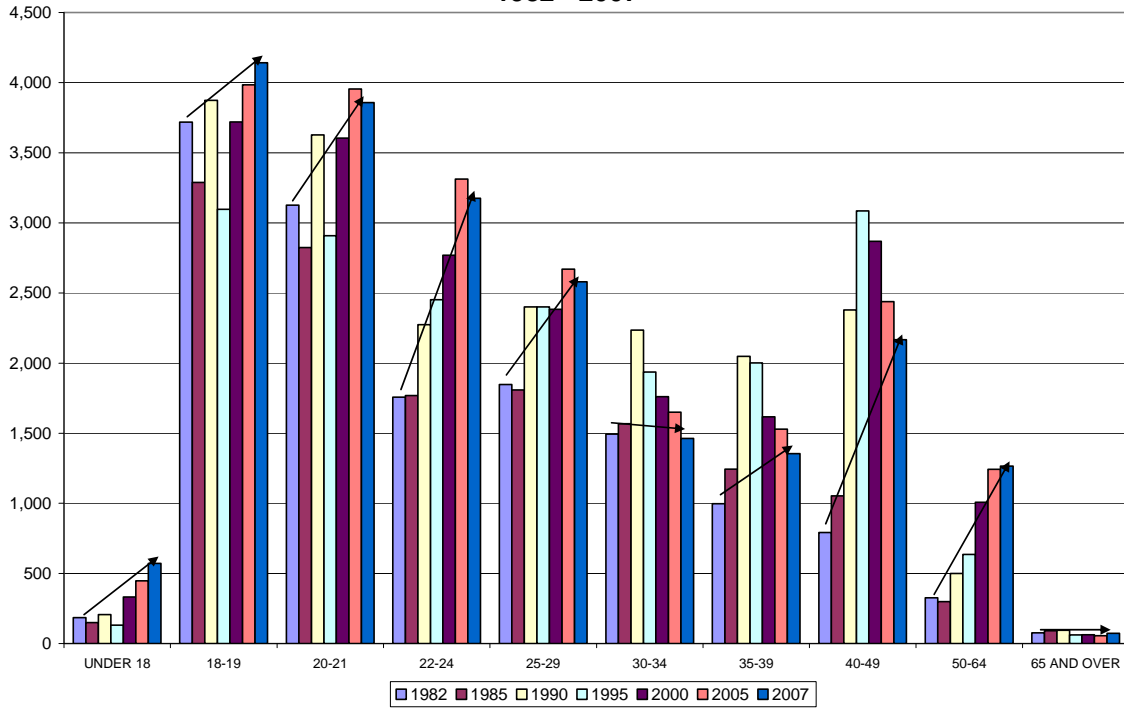
Change in Semester Headcount Enrollment 1995 - 2005



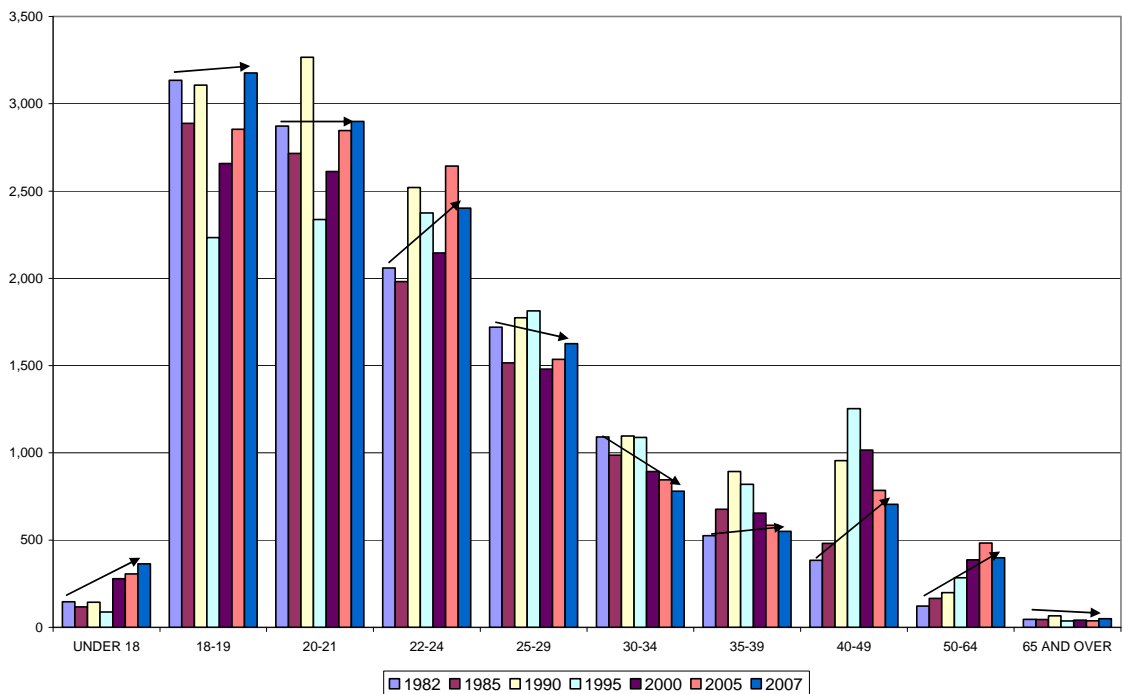
Total Headcount by Selected Age Groups 1982 - 2007



Female UMS Enrollment by Age Group 1982 - 2007

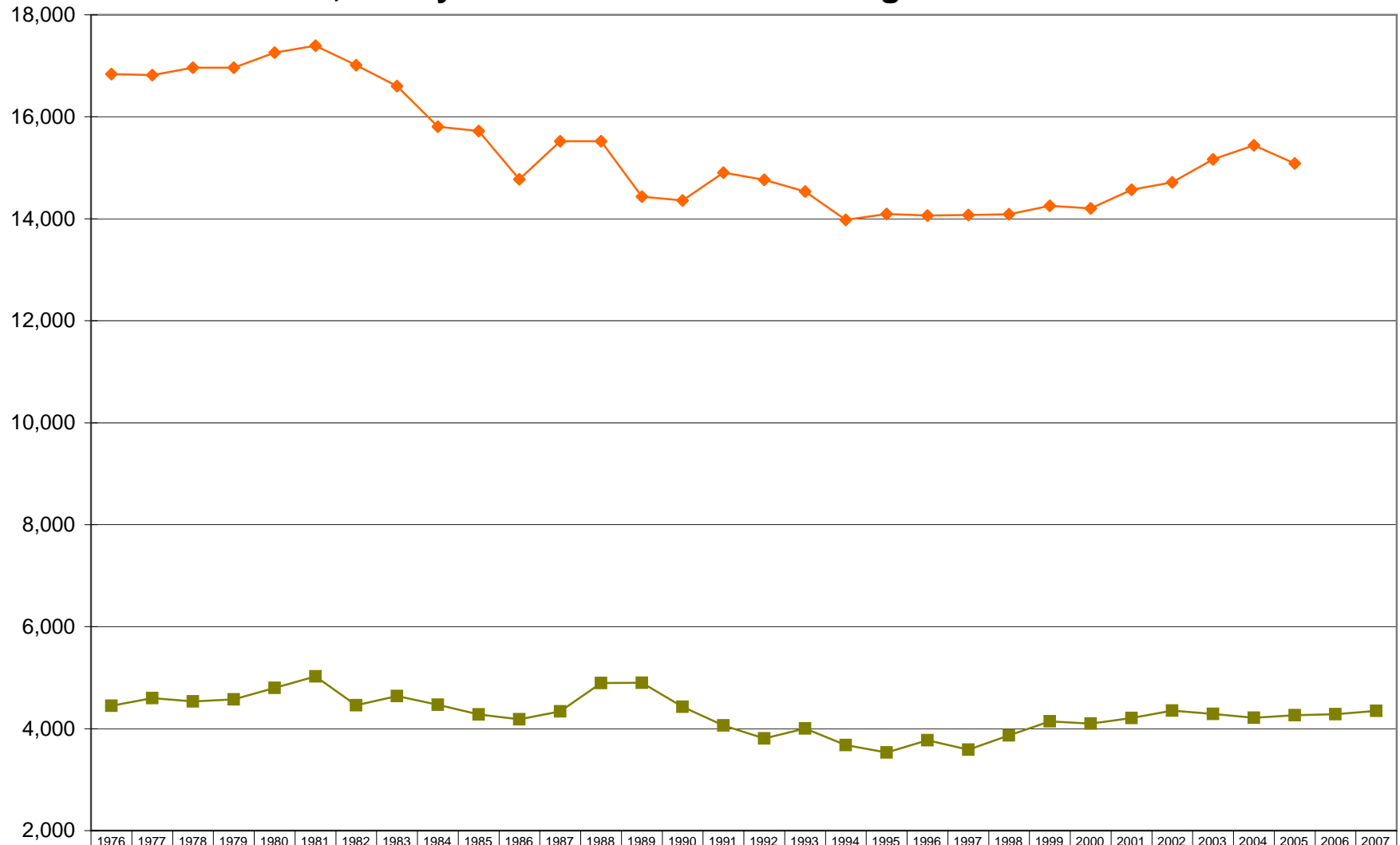


Male UMS Enrollment by Age Group 1982 - 2007



Entering Class Profile

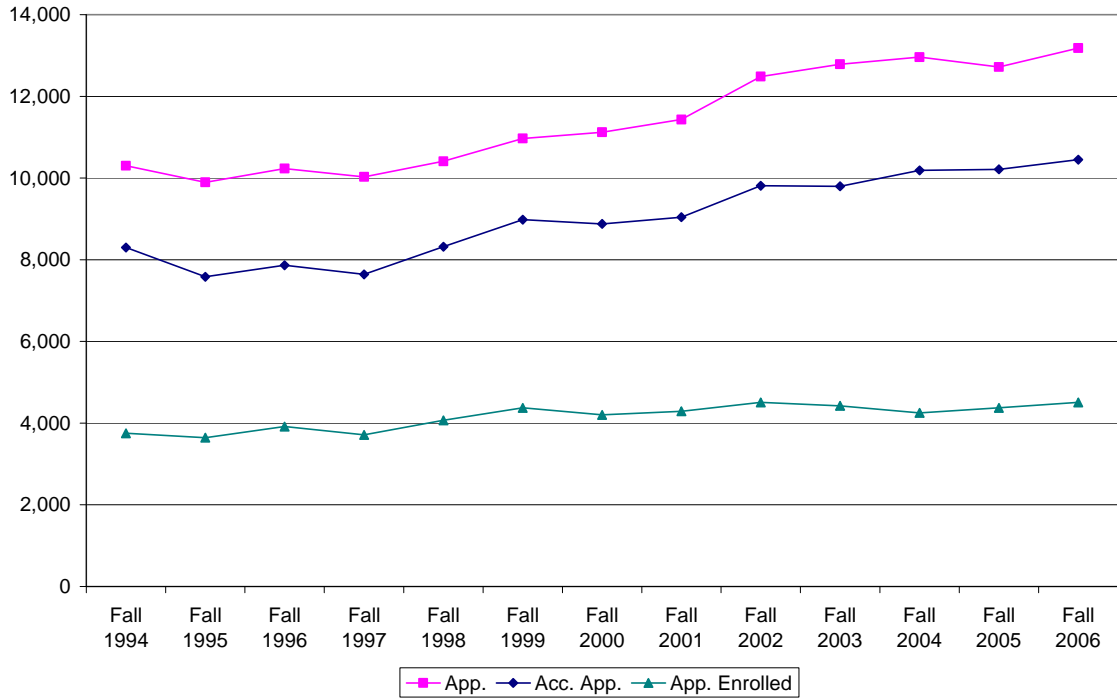
UMS First-time, First-year Students and Maine High School Graduates



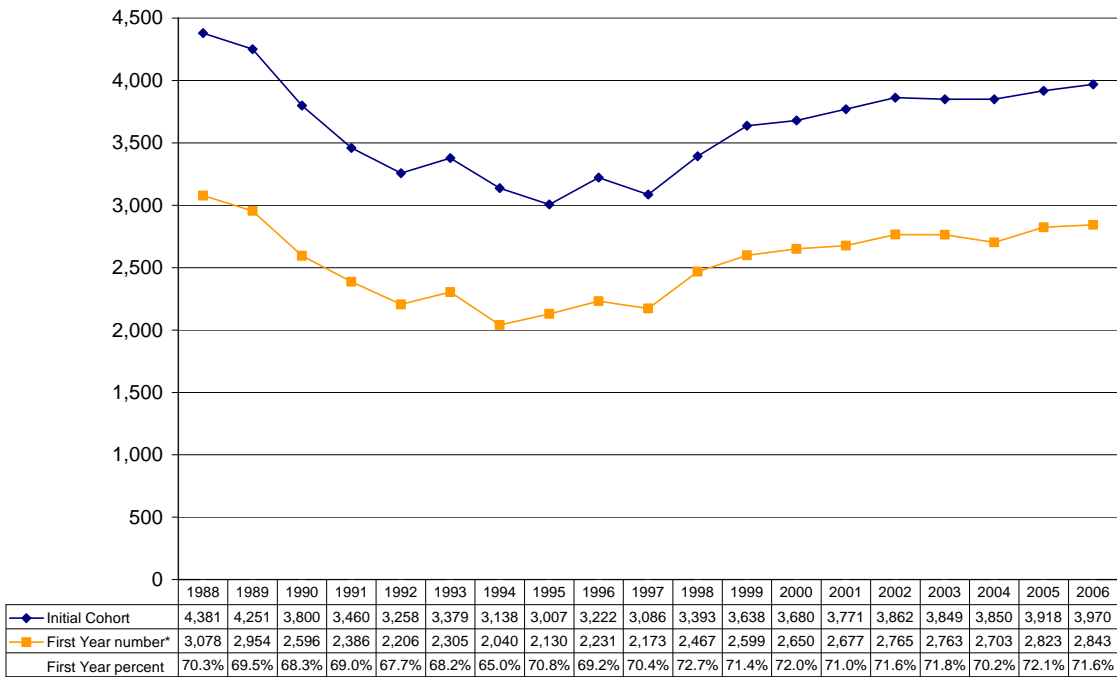
FT, FY	4,450	4,600	4,536	4,575	4,797	5,026	4,461	4,638	4,467	4,277	4,182	4,339	4,893	4,900	4,427	4,064	3,808	4,003	3,680	3,532	3,772	3,585	3,869	4,145	4,098	4,206	4,355	4,288	4,215	4,266	4,282	4,351
ME HS Graduates	16,838	16,816	16,961	16,965	17,261	17,395	17,013	16,604	15,805	15,721	14,773	15,519	15,523	14,436	14,359	14,903	14,764	14,537	13,980	14,093	14,063	14,073	14,089	14,252	14,203	14,569	14,716	15,164	15,439	15,084		
FT, FY to HS Grads	26%	27%	27%	27%	28%	29%	26%	28%	28%	27%	28%	28%	32%	34%	31%	27%	26%	28%	26%	25%	27%	25%	27%	29%	29%	29%	30%	28%	27%	28%		

Note: First-time, First-year students includes students from all locations.
 Data: Maine high school graduates provided by ME Dept of Education and the Office of Institutional Studies, University of Maine.

UMS Applied, Accepted, & Enrolled Students 1994 - 2006



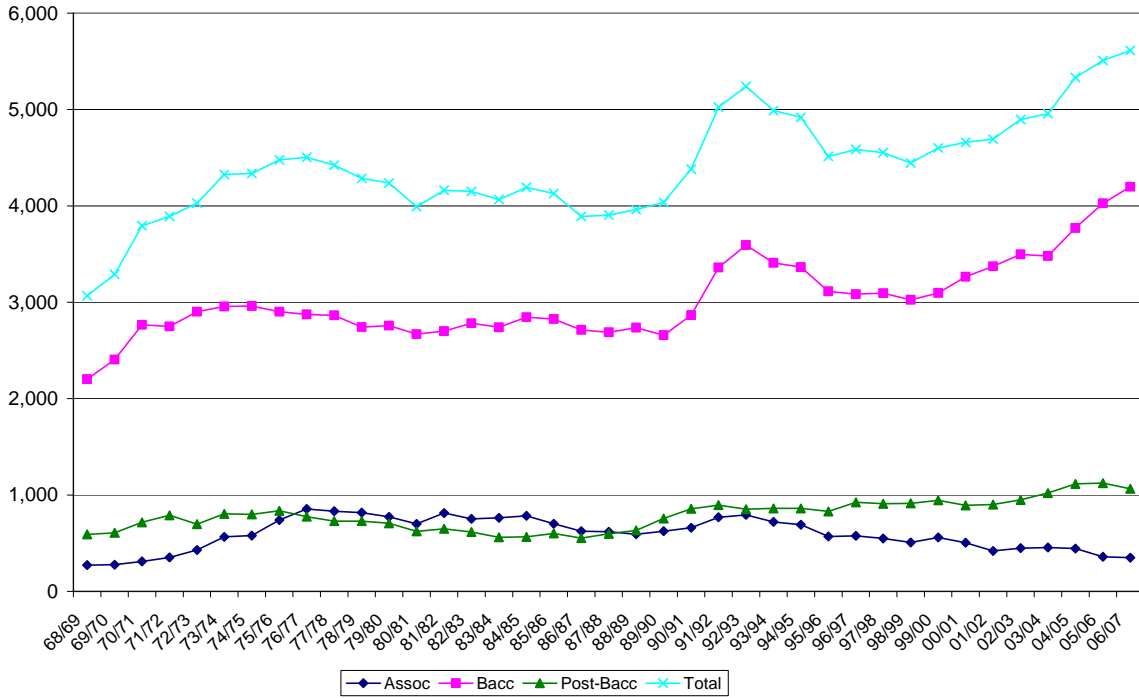
Fall Full-time, First-time, First-year Student Retention Rates 1988 - 2006



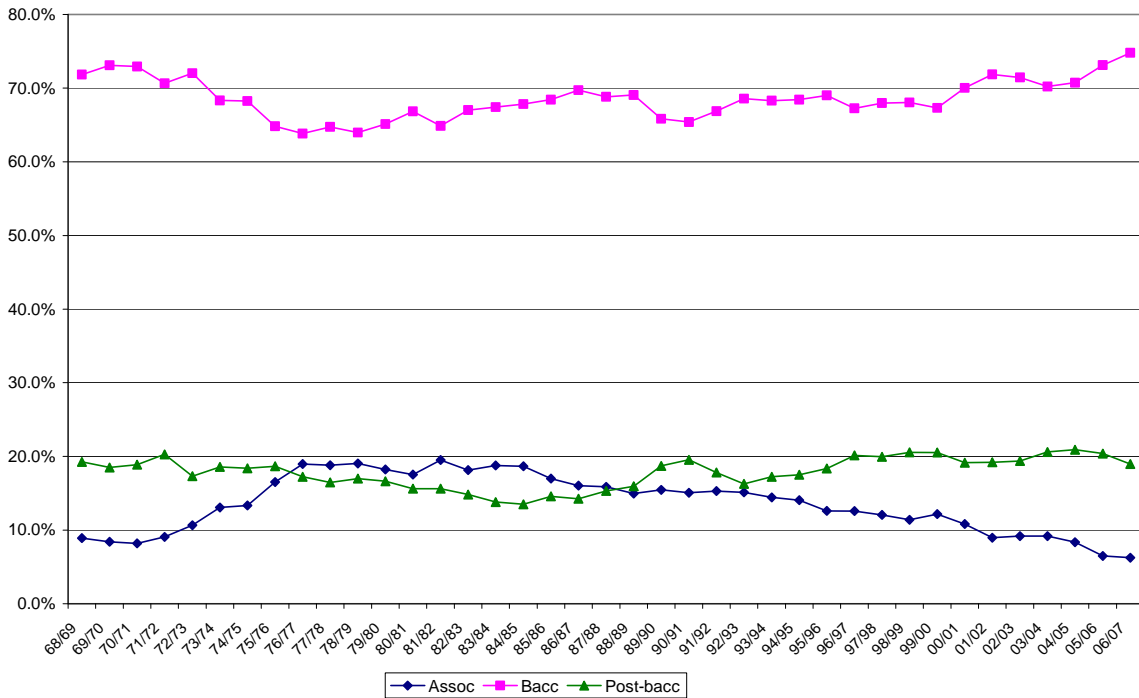
*Number of first-time students returning the following fall

Degrees Conferred Profile

Degrees Conferred by Degree Level 1968/69 - 2006/07



Ratios of Degrees Conferred 1968/69 - 2006/07



UMS Graduation Rates* by University 1997 - 2006

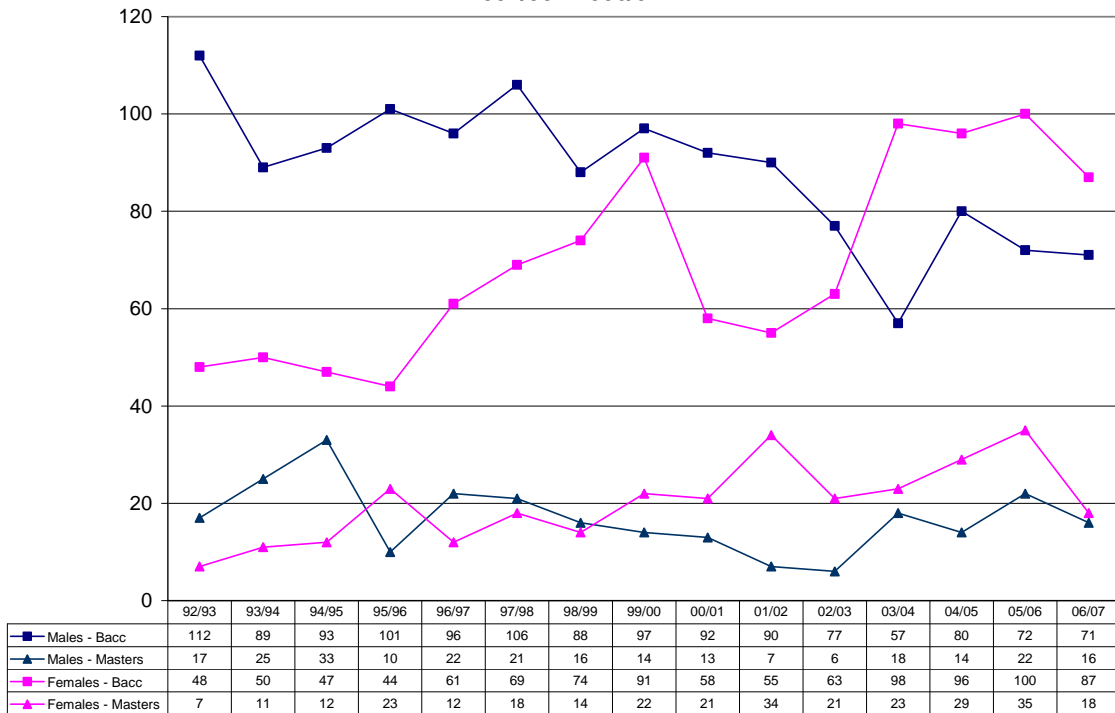
	1997	1998	1999	2000	2001	2002	2003	2004	2005	2006
UM	50	48	53	57	56	54	60	56	53	59
UMA	21	17	17	16	21	28	17	25	20	4**
UMF	55	52	59	51	54	51	56	58	66	61
UMFK	41	34	38	45	37	41	42	44	44	32
UMM	35	37	35	36	33	43	38	40	38	31
UMPI	35	28	37	33	43	38	32	31	46	36
USM	26	27	27	27	29	30	33	29	34	31

Data Source: IPEDS, National Center for Education Statistics

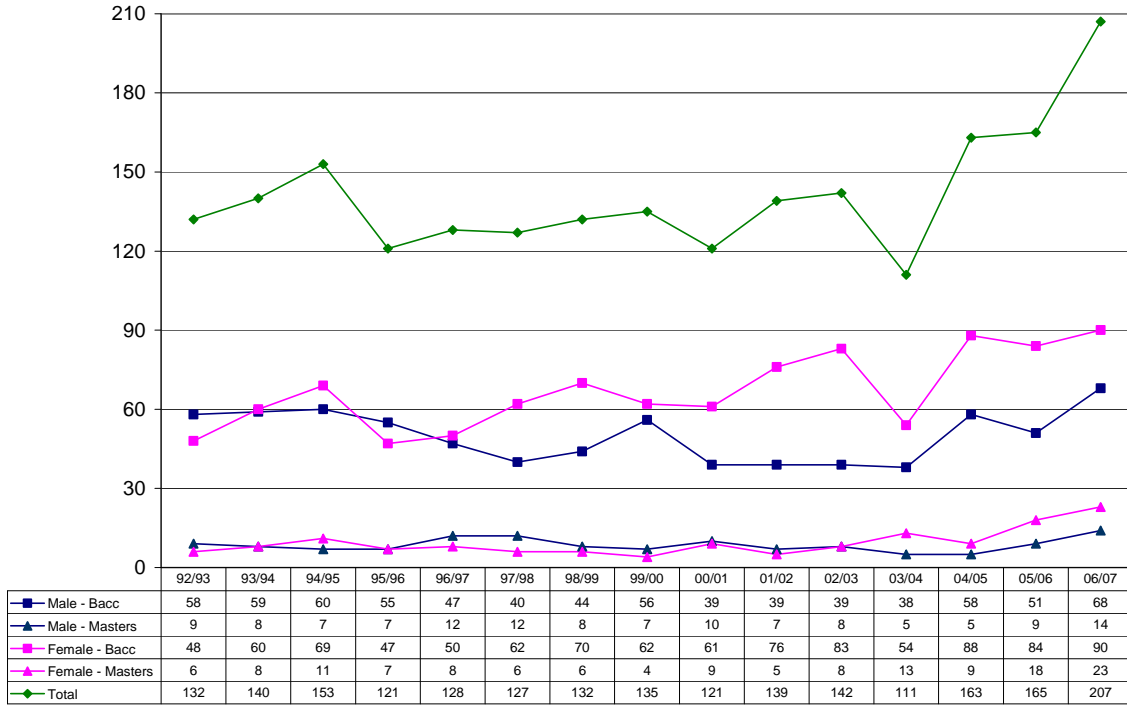
*Graduation rates include completers of 4-year, 2-year, and less-than-2-year degree programs within 150% of time.

**Apparent outlier - currently following up on reporting issues.

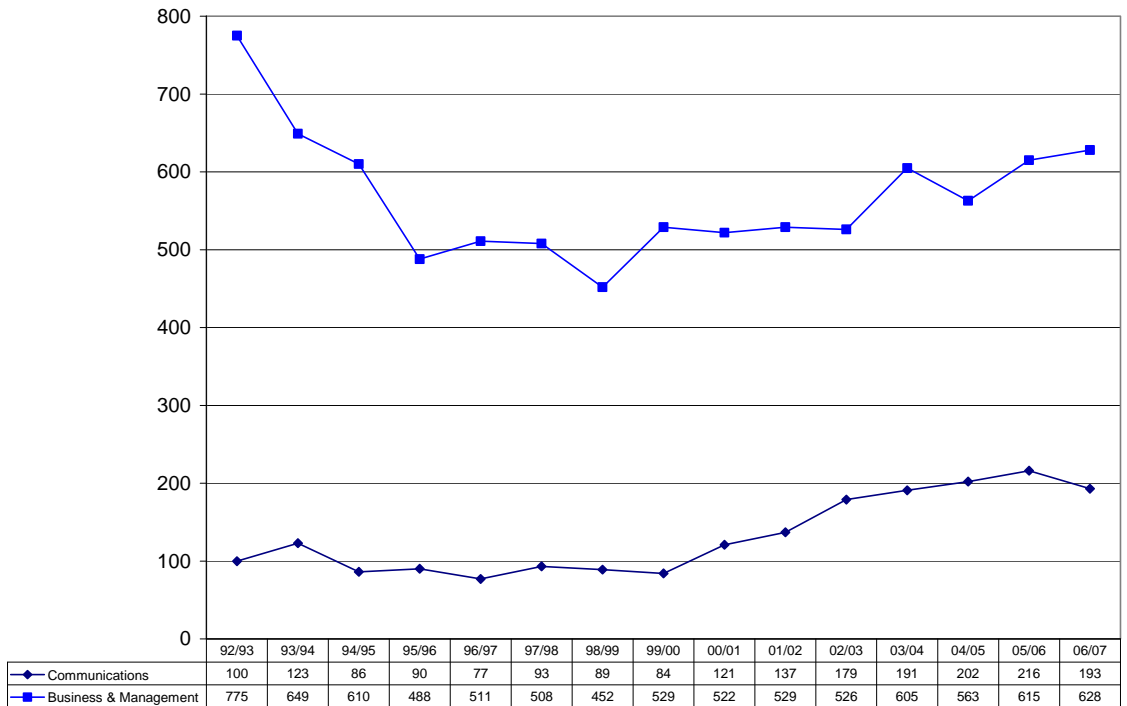
Agriculture & Natural Resources Degrees Conferred by Gender 1992/93 - 2006/07



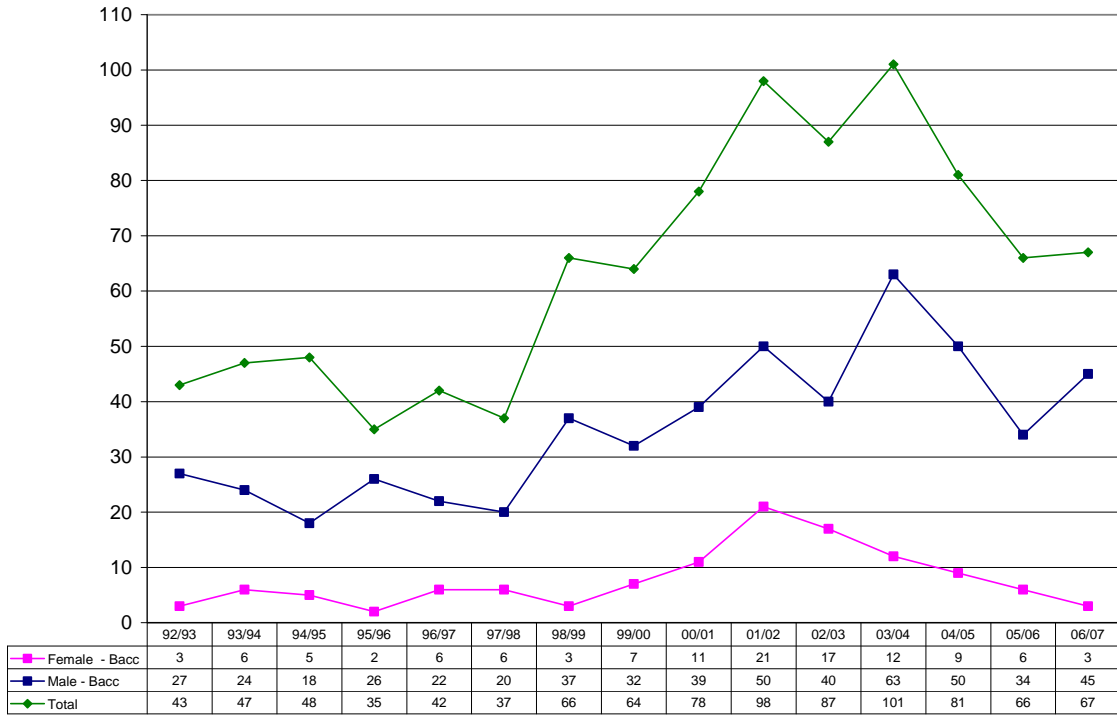
**Biological Sciences Degrees Conferred
1992/93 - 2006/07**



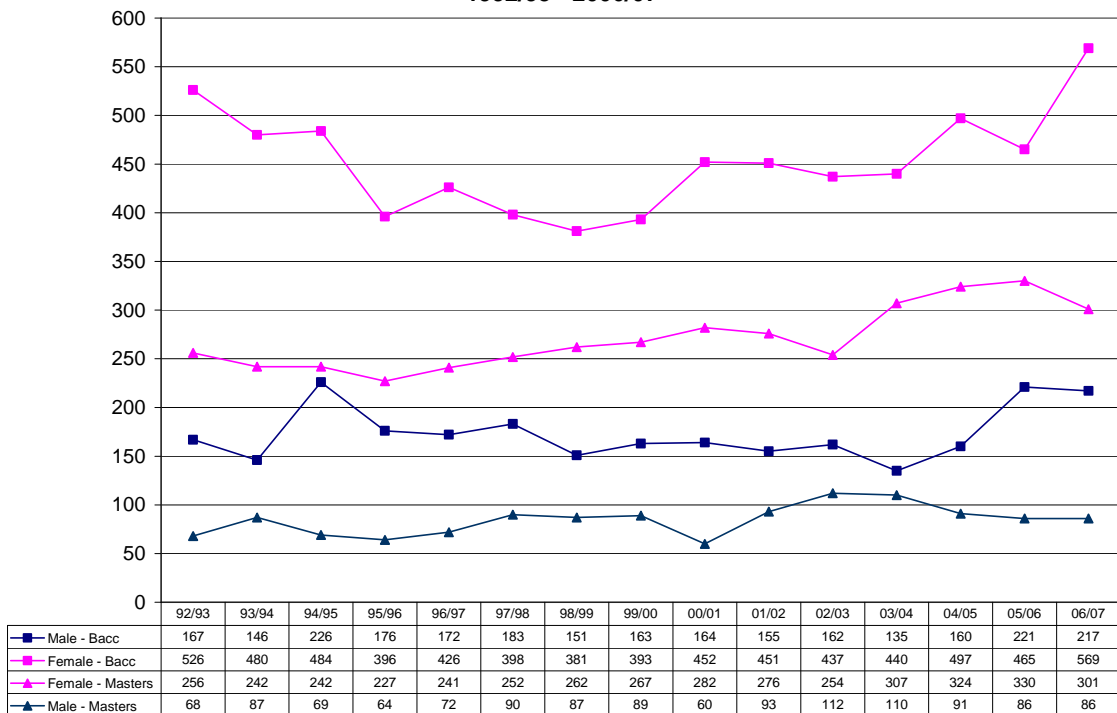
**Communications & Business & Management Degrees Conferred
1992/93 - 2006/07**



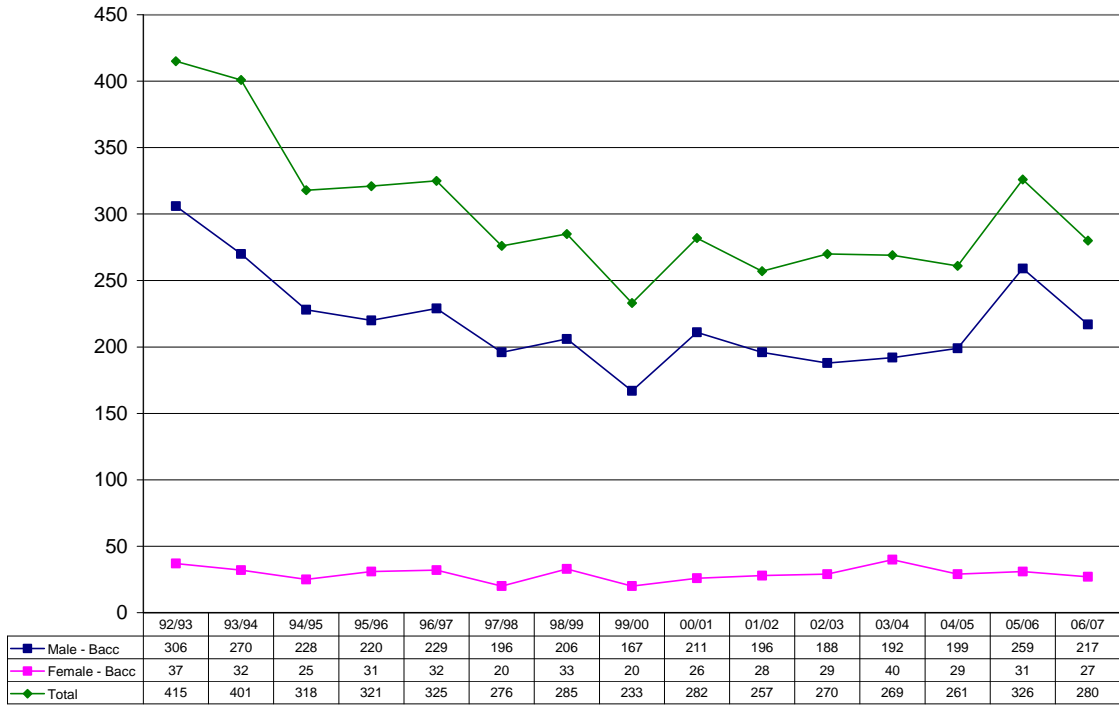
Computer & Information Science Degrees Conferred 1992/93 - 2006/07



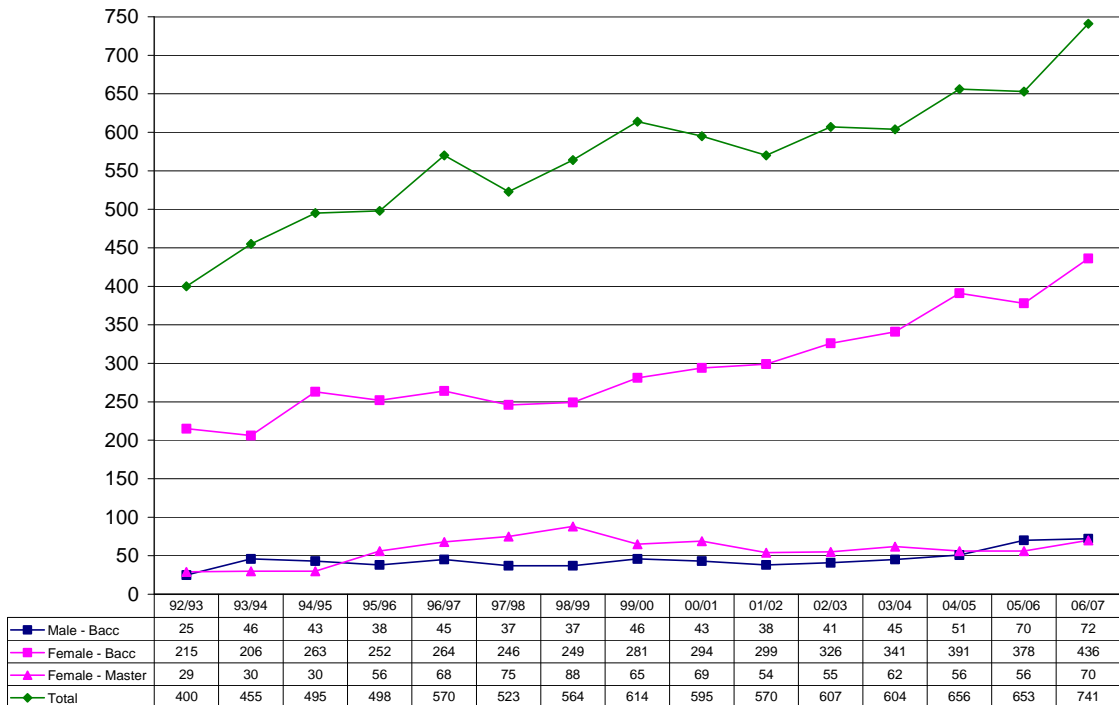
Education Degrees Conferred 1992/93 - 2006/07



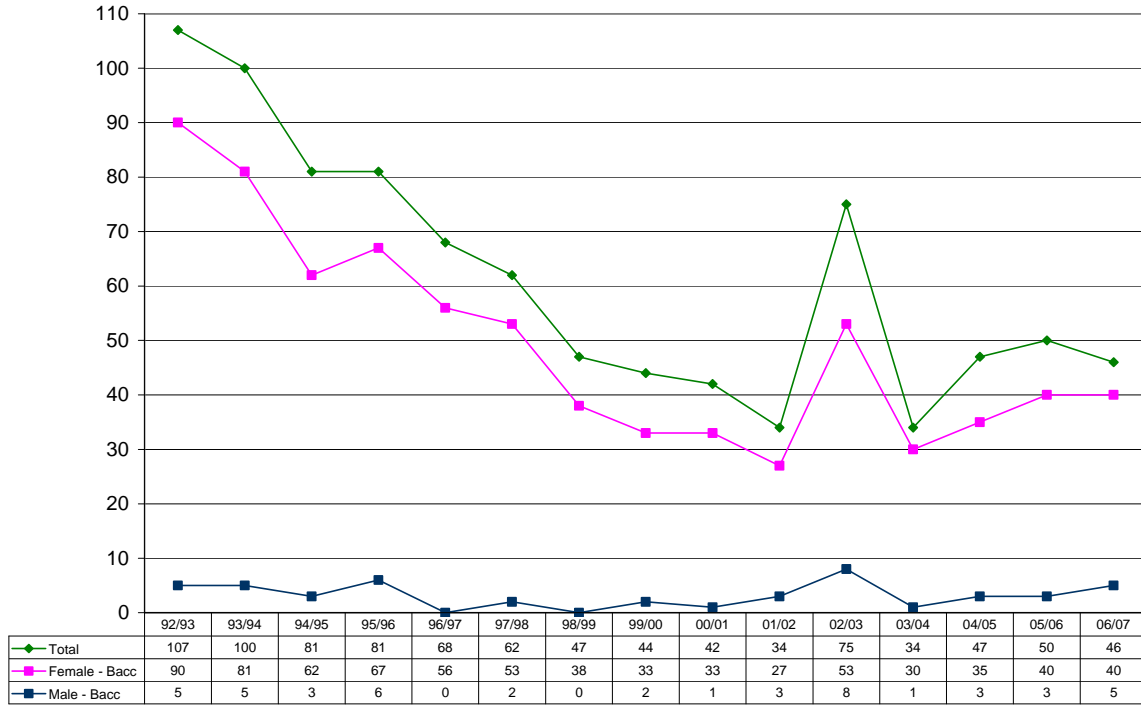
Engineering Degrees Conferred 1992/1993 - 2006/07



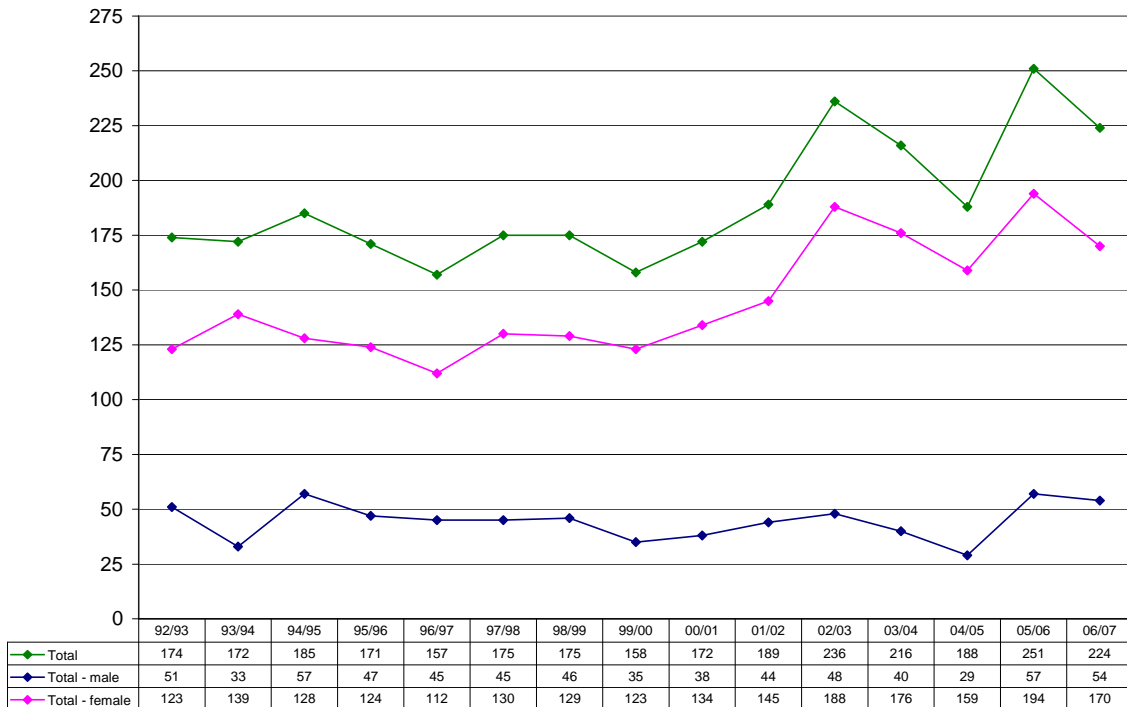
Health Professions Degrees Conferred 1992/93 - 2006/07



Human Development Degrees Conferred 1992/93 - 2006/07



Psychology Degrees Conferred 1992/93 - 2006/07



**Public Affairs Degrees Conferred
1992/93 - 2006/07**



**Social Sciences Degrees Conferred
1992/93 - 2006/07**

