

FALL 2008 UMS RETENTION RATES

October 28, 2008



*Maine's
Public
Universities*

UNIVERSITY OF MAINE SYSTEM

SUMMARY OF FALL 2008 RETENTION RATES

INTRODUCTION

This report provides summary information regarding University first to second year retention rates. In order to be consistent with National Center for Education Statistic (NCES) standards this report only includes first-time, full-time, first-year students.

TABLE OF CONTENTS

	<u>PAGE</u>
Highlights	i
By Headcount	1-2
By Residence	3-4
By Gender	5-6
Cohort Persistence & Completion Rate	7

SUMMARY OF FALL 2008 RETENTION RATES

HIGHLIGHTS

Note: Student retention rates are based on the entering fall cohort. For example, the Fall 2007 retention rate is the number of Fall 2007 full-time, first-time, first-year students returning in Fall 2008.

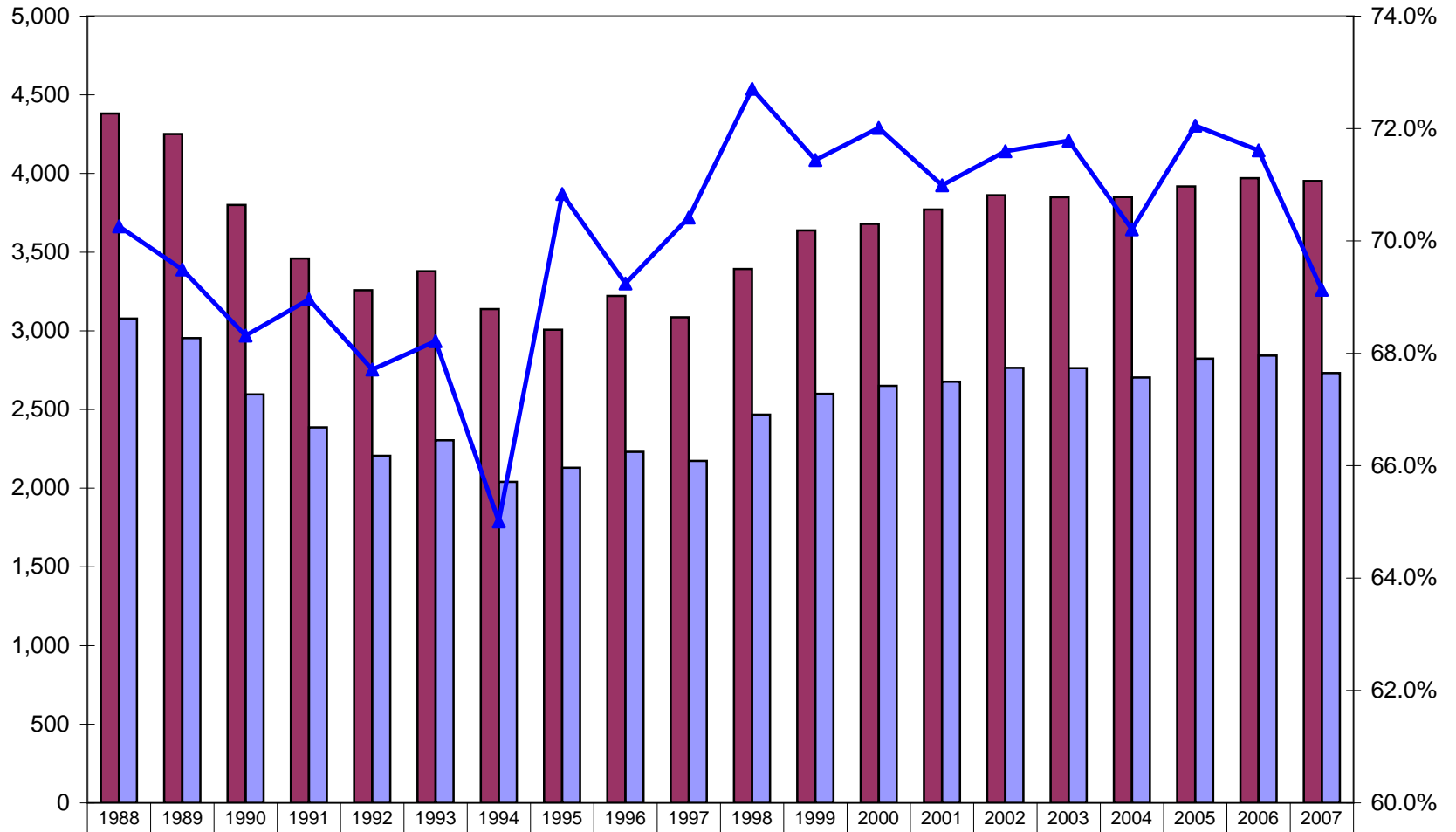
First-year Retention Rates

- Nearly 70% of Fall 2007 full-time, first-time, first-year students returned in Fall 2008, consistent, with previous years retention rates.
- Just over 71% of Fall 2007 in-state students returned in Fall 2008 (of the 3,283 in-state students in Fall 2007, 2,333 returned in Fall 2008).
- Of the 669 out-of-state entering students in Fall 2007, 399 returned in Fall 2008. This 60% retention rate is lower than previous year's retention rates.
- Fall 2007 male and female retention rates are similar, 1,485 females returned out of 2,163 female students (69%) and 1,247 males returned out of 1,789 male students (70%).
- The persistence rates show that 72% of first-time students returned the following year with 79% of those students returning in the third year, and 87% returning their fourth year.

Graduation Rates

- Of the 3,732 students defined by NCES as the Fall 2001 student cohort, 1,796 students graduated (48%) within 150% of the established programs timeline. This 48% graduation rate is up from the 46% rate of the Fall 1999 cohort graduating by Spring 2005.

UMS First-time, First Year Students, Returning Students and Retention Rates Fall 1988 - Fall 2007



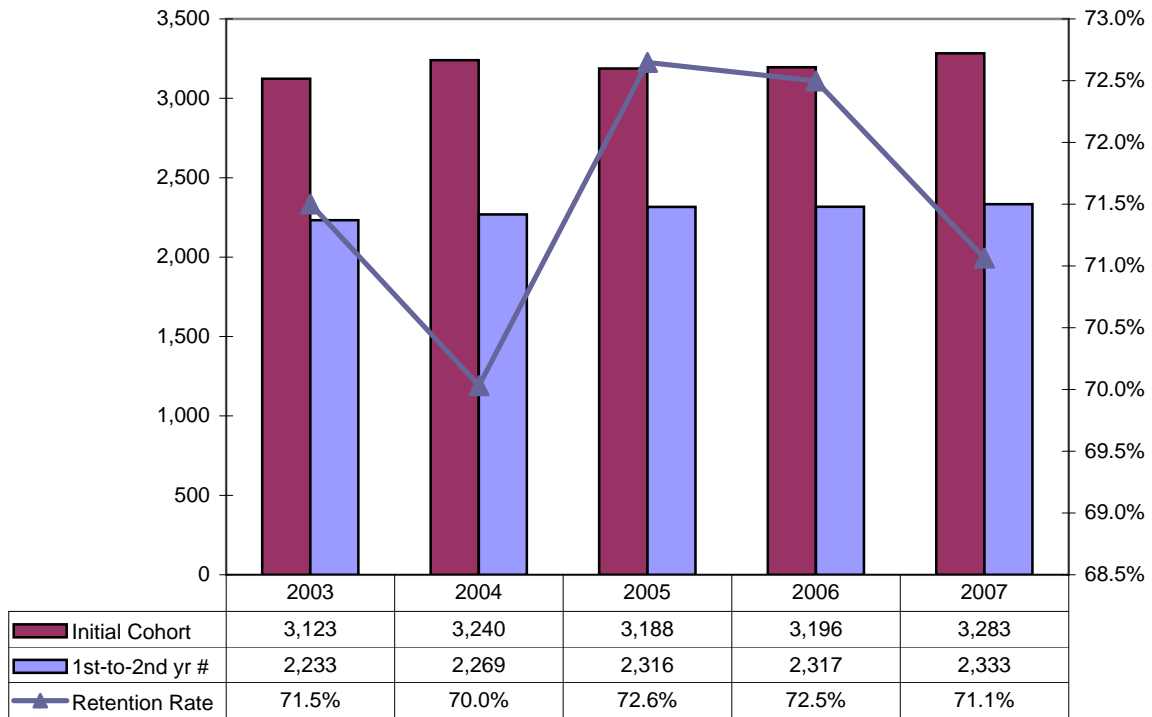
Initial Cohort	4,381	4,251	3,800	3,460	3,258	3,379	3,138	3,007	3,222	3,086	3,393	3,638	3,680	3,771	3,862	3,849	3,850	3,918	3,970	3,952
1st-to-2nd yr #	3,078	2,954	2,596	2,386	2,206	2,305	2,040	2,130	2,231	2,173	2,467	2,599	2,650	2,677	2,765	2,763	2,703	2,823	2,843	2,732
Retention %	70.3%	69.5%	68.3%	69.0%	67.7%	68.2%	65.0%	70.8%	69.2%	70.4%	72.7%	71.4%	72.0%	71.0%	71.6%	71.8%	70.2%	72.1%	71.6%	69.1%

FALL FULL-TIME FIRST-TIME FIRST-YEAR STUDENTS¹

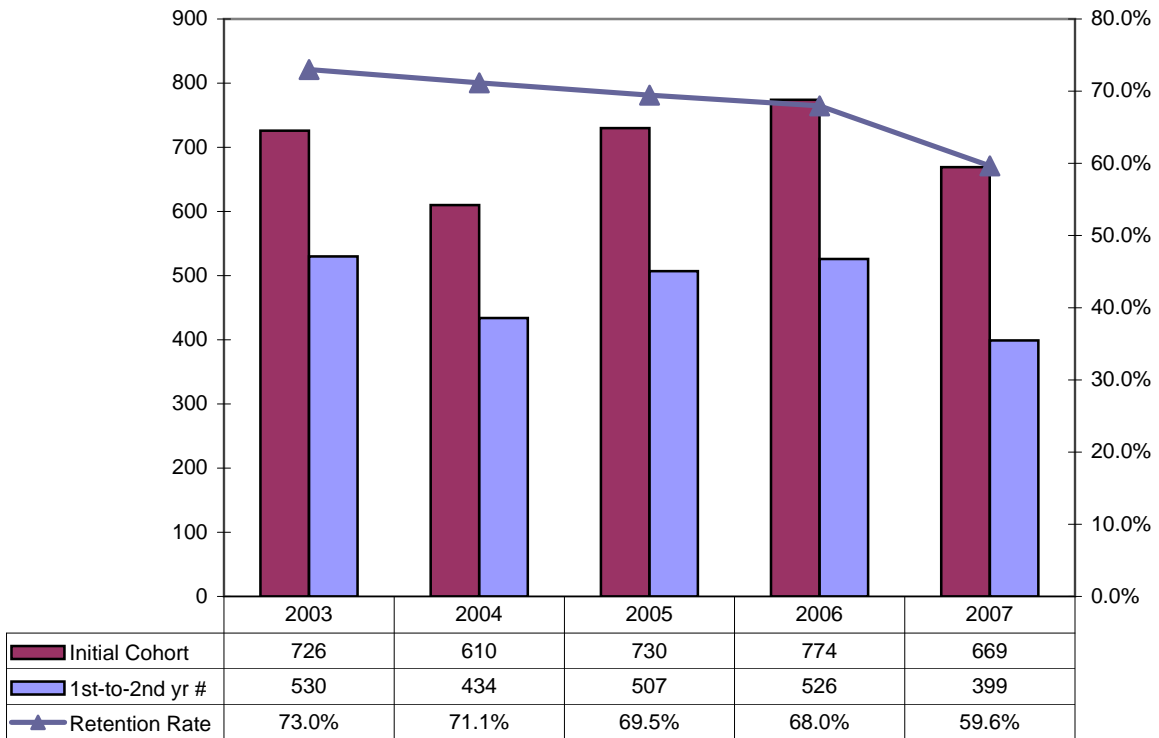
		Fall 1988	Fall 1989	Fall 1990	Fall 1991	Fall 1992	Fall 1993	Fall 1994	Fall 1995	Fall 1996	Fall 1997	Fall 1998	Fall 1999	Fall 2000	Fall 2001	Fall 2002	Fall 2003	Fall 2004	Fall 2005	Fall 2006	Fall 2007	Average
UMS	Initial Cohort	4,381	4,251	3,800	3,460	3,258	3,379	3,138	3,007	3,222	3,086	3,393	3,638	3,680	3,771	3,862	3,849	3,850	3,918	3,970	3,952	3,643
	1st-to-2nd yr #	3,078	2,954	2,596	2,386	2,206	2,305	2,040	2,130	2,231	2,173	2,467	2,599	2,650	2,677	2,765	2,763	2,703	2,823	2,843	2,732	2,556
	Retention %	70.3%	69.5%	68.3%	69.0%	67.7%	68.2%	65.0%	70.8%	69.2%	70.4%	72.7%	71.4%	72.0%	71.0%	71.6%	71.8%	70.2%	72.1%	71.6%	69.1%	70.2%
UM	Initial Cohort	2,435	2,195	1,846	1,595	1,429	1,593	1,416	1,139	1,292	1,108	1,355	1,544	1,615	1,568	1,690	1,637	1,642	1,736	1,842	1,853	1,627
	1st-to-2nd yr #	1,822	1,649	1,374	1,167	1,064	1,163	930	893	978	889	1,081	1,202	1,267	1,233	1,318	1,300	1,295	1,387	1,444	1,402	1,243
	Retention %	74.8%	75.1%	74.4%	73.2%	74.5%	73.0%	65.7%	78.4%	75.7%	80.2%	79.8%	77.8%	78.5%	78.6%	78.0%	79.4%	78.9%	79.9%	78.4%	75.7%	76.4%
UMA	Initial Cohort	185	189	218	222	226	216	172	363	341	290	291	366	316	323	327	381	353	301	320	303	285
	1st-to-2nd yr #	101	87	101	121	118	107	86	188	176	152	170	191	158	173	170	194	178	149	170	159	147
	Retention %	54.6%	46.0%	46.3%	54.5%	52.2%	49.5%	50.0%	51.8%	51.6%	52.4%	58.4%	52.2%	50.0%	53.6%	52.0%	50.9%	50.4%	49.5%	53.1%	52.5%	51.7%
UMF	Initial Cohort	402	450	465	457	440	419	471	473	477	466	484	470	475	479	453	520	510	560	518	479	473
	1st-to-2nd yr #	305	313	338	336	312	311	335	341	338	323	379	374	384	352	349	395	387	412	380	336	350
	Retention %	75.9%	69.6%	72.7%	73.5%	70.9%	74.2%	71.1%	72.1%	70.9%	69.3%	78.3%	79.6%	80.8%	73.5%	77.0%	76.0%	75.9%	73.6%	73.4%	70.1%	73.9%
UMFK	Initial Cohort	67	98	96	86	98	81	78	72	84	77	93	109	82	98	130	126	166	129	116	131	101
	1st-to-2nd yr #	41	64	60	66	72	54	48	50	54	50	71	77	43	57	71	83	87	80	72	75	64
	Retention %	61.2%	65.3%	62.5%	76.7%	73.5%	66.7%	61.5%	69.4%	64.3%	64.9%	76.3%	70.6%	52.4%	58.2%	54.6%	65.9%	52.4%	62.0%	62.1%	57.3%	63.2%
UMM	Initial Cohort	137	145	154	147	140	133	146	129	143	121	148	122	128	155	132	144	82	104	99	108	131
	1st-to-2nd yr #	81	87	89	93	84	86	94	91	100	71	96	72	74	106	91	88	54	74	72	80	84
	Retention %	59.1%	60.0%	57.8%	63.3%	60.0%	64.7%	64.4%	70.5%	69.9%	58.7%	64.9%	59.0%	57.8%	68.4%	68.9%	61.1%	65.9%	71.2%	72.7%	74.1%	64.3%
UMPI	Initial Cohort	162	210	202	187	230	204	223	210	202	262	227	203	201	216	228	193	229	183	188	188	207
	1st-to-2nd yr #	98	140	114	112	129	128	141	143	129	164	137	129	130	133	155	129	125	123	112	111	129
	Retention %	60.5%	66.7%	56.4%	59.9%	56.1%	62.7%	63.2%	68.1%	63.9%	62.6%	60.4%	63.5%	64.7%	61.6%	68.0%	66.8%	54.6%	67.2%	59.6%	59.0%	62.2%
USM	Initial Cohort	993	964	819	766	695	733	632	621	683	762	795	824	863	932	902	848	868	905	887	890	819
	1st-to-2nd yr #	630	614	520	491	427	456	406	424	456	524	533	554	594	623	611	574	577	598	593	569	539
	Retention %	63.4%	63.7%	63.5%	64.1%	61.4%	62.2%	64.2%	68.3%	66.8%	68.8%	67.0%	67.2%	68.8%	66.8%	67.7%	67.7%	66.5%	66.1%	66.9%	63.9%	65.8%

¹Number of fall first-time first-year students who returned the following fall.

In-State Fall Retention Rate



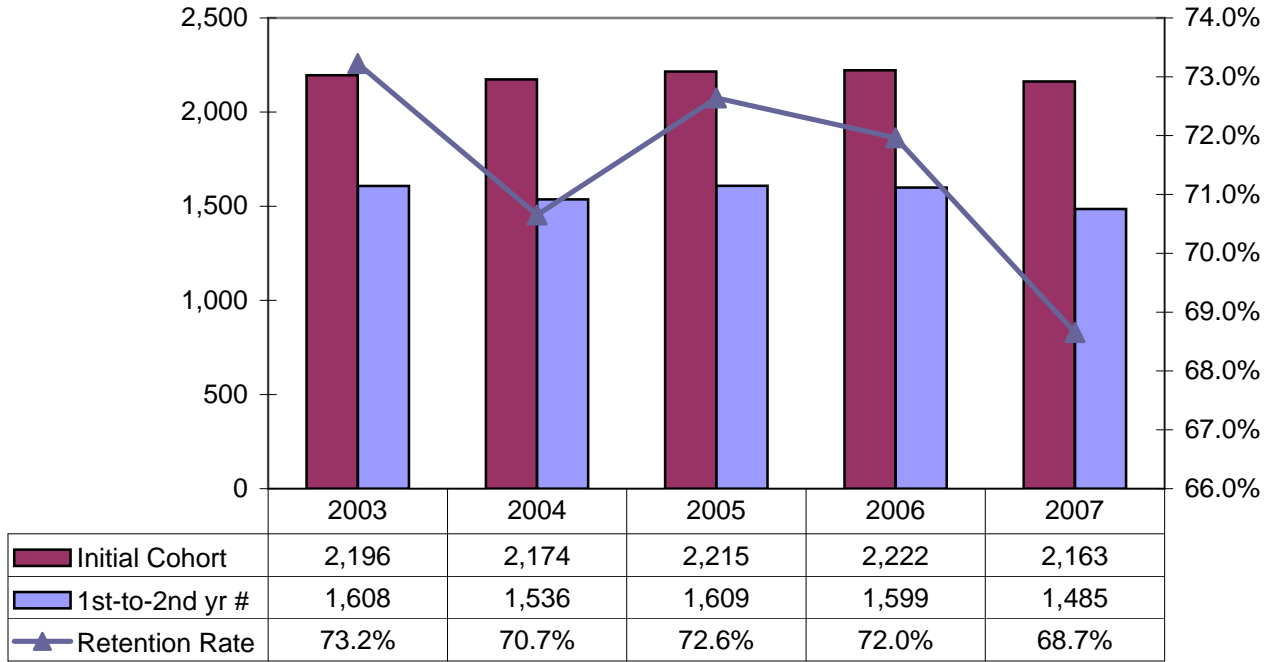
Out-of-State Fall Retention Rate



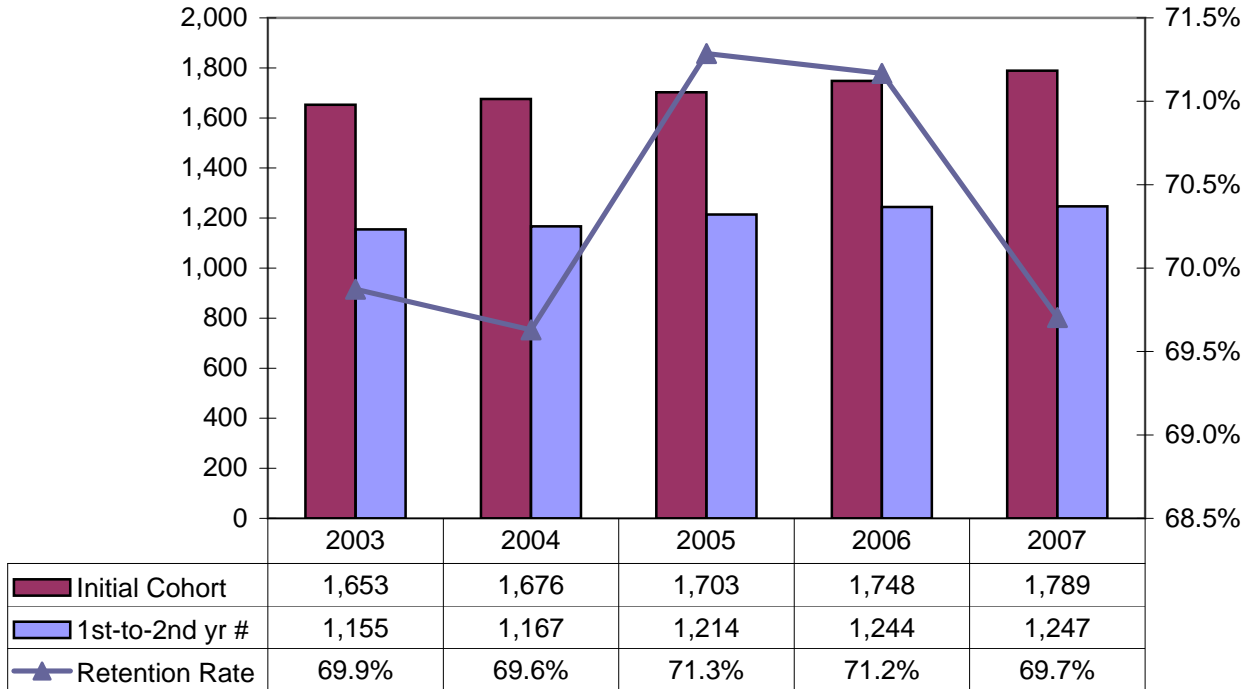
Retention Rate by University by Residency

		2003 Cohort	1st-to-2nd yr #	Fall 2003 Retention Rate	2004 Cohort	1st-to-2nd yr #	Fall 2004 Retention Rate	2005 Cohort	1st-to-2nd yr #	Fall 2005 Retention Rate	2006 Cohort	1st-to-2nd yr #	Fall 2006 Retention Rate	2007 Cohort	1st-to-2nd yr #	Fall 2007 Retention Rate
UMS	In-State	3,123	2,233	71.5%	3,240	2,269	70.0%	3,188	2,316	72.6%	3,196	2,317	72.5%	3,283	2,333	71.1%
	Out-of-State	726	530	73.0%	610	434	71.1%	730	507	69.5%	774	526	68.0%	669	399	59.6%
	Grand Count	3,849	2,763	71.8%	3,850	2,703	70.2%	3,918	2,823	72.1%	3,970	2,843	71.6%	3,952	2,732	69.1%
UM	In-State	1,316	1,051	79.9%	1,368	1,086	79.4%	1,383	1,114	80.5%	1,425	1,143	80.2%	1,525	1,197	78.5%
	Out-of-State	321	249	77.6%	274	209	76.3%	353	273	77.3%	417	301	72.2%	328	205	62.5%
UMA	In-State	378	194	51.3%	350	176	50.3%	296	148	50.0%	314	168	53.5%	300	157	52.3%
	Out-of-State	3	0	0.0%	3	2	66.7%	5	1	20.0%	6	2	33.3%	3	2	66.7%
UMF	In-State	392	290	74.0%	426	324	76.1%	432	327	75.7%	396	295	74.5%	395	280	70.9%
	Out-of-State	128	105	82.0%	84	63	75.0%	128	85	66.4%	122	85	69.7%	84	56	66.7%
UMFK	In-State	107	74	69.2%	136	74	54.4%	114	73	64.0%	100	64	64.0%	100	67	67.0%
	Out-of-State	19	9	47.4%	30	13	43.3%	15	7	46.7%	16	8	50.0%	31	8	25.8%
UMM	In-State	92	56	60.9%	50	35	70.0%	71	52	73.2%	70	49	70.0%	73	51	69.9%
	Out-of-State	52	32	61.5%	32	19	59.4%	33	22	66.7%	29	23	79.3%	35	29	82.9%
UMPI	In-State	170	115	67.6%	198	102	51.5%	156	104	66.7%	165	99	60.0%	172	107	62.2%
	Out-of-State	23	14	60.9%	31	23	74.2%	27	19	70.4%	23	13	56.5%	16	4	25.0%
USM	In-State	668	453	67.8%	712	472	66.3%	736	498	67.7%	726	499	68.7%	718	474	66.0%
	Out-of-State	180	121	67.2%	156	105	67.3%	169	100	59.2%	161	94	58.4%	172	95	55.2%

Female Fall Retention Rate



Male Fall Retention Rate



Retention Rate by University by Gender

		2003 Cohort	1st-to-2nd yr #	Fall 2003 Retention Rate	2004 Cohort	1st-to-2nd yr #	Fall 2004 Retention Rate	2005 Cohort	1st-to-2nd yr #	Fall 2005 Retention Rate	2006 Cohort	1st-to-2nd yr #	Fall 2006 Retention Rate	2007 Cohort	1st-to-2nd yr #	Fall 2007 Retention Rate
UMS	Female	2,196	1,608	73.2%	2,174	1,536	70.7%	2,215	1,609	72.6%	2,222	1,599	72.0%	2,163	1,485	68.7%
	Male	1,653	1,155	69.9%	1,676	1,167	69.6%	1,703	1,214	71.3%	1,748	1,244	71.2%	1,789	1,247	69.7%
	Total	3,849	2,763	71.8%	3,850	2,703	70.2%	3,918	2,823	72.1%	3,970	2,843	71.6%	3,952	2,732	69.1%
UM	Female	830	673	81.1%	795	630	79.2%	858	691	80.5%	892	716	80.3%	884	670	75.8%
	Male	807	627	77.7%	847	665	78.5%	878	696	79.3%	950	728	76.6%	969	732	75.5%
UMA	Female	232	122	52.6%	240	123	51.3%	204	107	52.5%	219	118	53.9%	211	112	53.1%
	Male	149	72	48.3%	113	55	48.7%	97	42	43.3%	101	52	51.5%	92	47	51.1%
UMF	Female	368	283	76.9%	342	260	76.0%	386	285	73.8%	359	273	76.0%	328	228	69.5%
	Male	152	112	73.7%	168	127	75.6%	174	127	73.0%	159	107	67.3%	151	108	71.5%
UMFK	Female	62	45	72.6%	85	48	56.5%	69	44	63.8%	67	42	62.7%	70	40	57.1%
	Male	64	38	59.4%	81	39	48.1%	60	36	60.0%	49	30	61.2%	61	35	57.4%
UMM	Female	93	62	66.7%	54	34	63.0%	70	51	72.9%	59	42	71.2%	71	49	69.0%
	Male	51	26	51.0%	28	20	71.4%	34	23	67.6%	40	30	75.0%	37	31	83.8%
UMPI	Female	117	79	67.5%	136	74	54.4%	113	83	73.5%	116	70	60.3%	106	66	62.3%
	Male	76	50	65.8%	93	51	54.8%	70	40	57.1%	72	42	58.3%	82	45	54.9%
USM	Female	494	344	69.6%	522	367	70.3%	515	348	67.6%	510	338	66.3%	493	320	64.9%
	Male	354	230	65.0%	346	210	60.7%	390	250	64.1%	377	255	67.6%	397	249	62.7%

University of Maine System 1999 Cohort Persistence and Completion Rates

	1999 Cohort (Fall 1999)	First to Second Year Persistence	Second to Third Year Persistence	Third to Fourth Year Persistence	Completers within 150% of normal time (from original campus) (Spring 2005)
TOTAL	3,605	2,599	2,016	1,731	1,652
		72%	78%	86%	46%
UM	1,521	1,202	976	877	802
		79%	81%	90%	53%
UMA	366	191	115	57	74
		52%	60%	50%	20%
UMF	470	374	317	292	312
		80%	85%	92%	66%
UMFK	109	77	47	32	48
		71%	61%	68%	44%
UMM	121	72	53	41	46
		60%	74%	77%	38%
UMPI	203	129	96	82	93
		64%	74%	85%	46%
USM	815	554	412	350	277
		68%	74%	85%	34%

University of Maine System 2001 Cohort Persistence and Completion Rates

	2001 Cohort (Fall 2001)	First to Second Year Persistence	Second to Third Year Persistence	Third to Fourth Year Persistence	Completers within 150% of normal time (from original campus) (Spring 2007)
TOTAL	3,732	2,677	2,106	1,833	1,796
		72%	79%	87%	48%
UM	1,545	1,233	1,039	941	911
		80%	84%	91%	59%
UMA	316	173	95	49	80
		55%	55%	52%	25%
UMF	479	352	300	275	295
		73%	85%	92%	62%
UMFK	99	57	48	40	44
		58%	84%	83%	44%
UMM	155	106	84	70	77
		68%	79%	83%	50%
UMPI	216	133	88	75	77
		62%	66%	85%	36%
USM	922	623	452	383	312
		68%	73%	85%	34%

Source: Cohort and completion data - NCES, IPEDS; Persistence data - UMS

National Center for Education Statistics (NCES) defines the entering cohort for institutions and allows for certain adjustments. Due to these adjustments, there is a difference in the NCES defined cohort and the UMS defined cohort.