

**SUMMARY OF  
FALL 2008  
UNDERGRADUATE  
APPLICATIONS, ADMISSIONS,  
AND ENROLLMENTS**

**October 30, 2008**



*Maine's  
Public  
Universities*

---

**UNIVERSITY OF MAINE SYSTEM**

---

## SUMMARY OF FALL 2008 ADMISSIONS RATES

---

### INTRODUCTION

This report provides summary information regarding undergraduate University admissions, applications, and enrolled students. Total admission, applications, and enrollments include both first-time, first-year students and transfer students. This report includes total, first-time, first-year and transfer students.

### TABLE OF CONTENTS

	<u>PAGE</u>
Highlights	i
UMS Total Applicants, Acceptances, and Enrolled Students	1-6
UMS First-Time Applicants, Acceptances, and Enrolled Students	7-12
UMS Transfer Applicants, Acceptances, and Enrolled Students	13-18

---

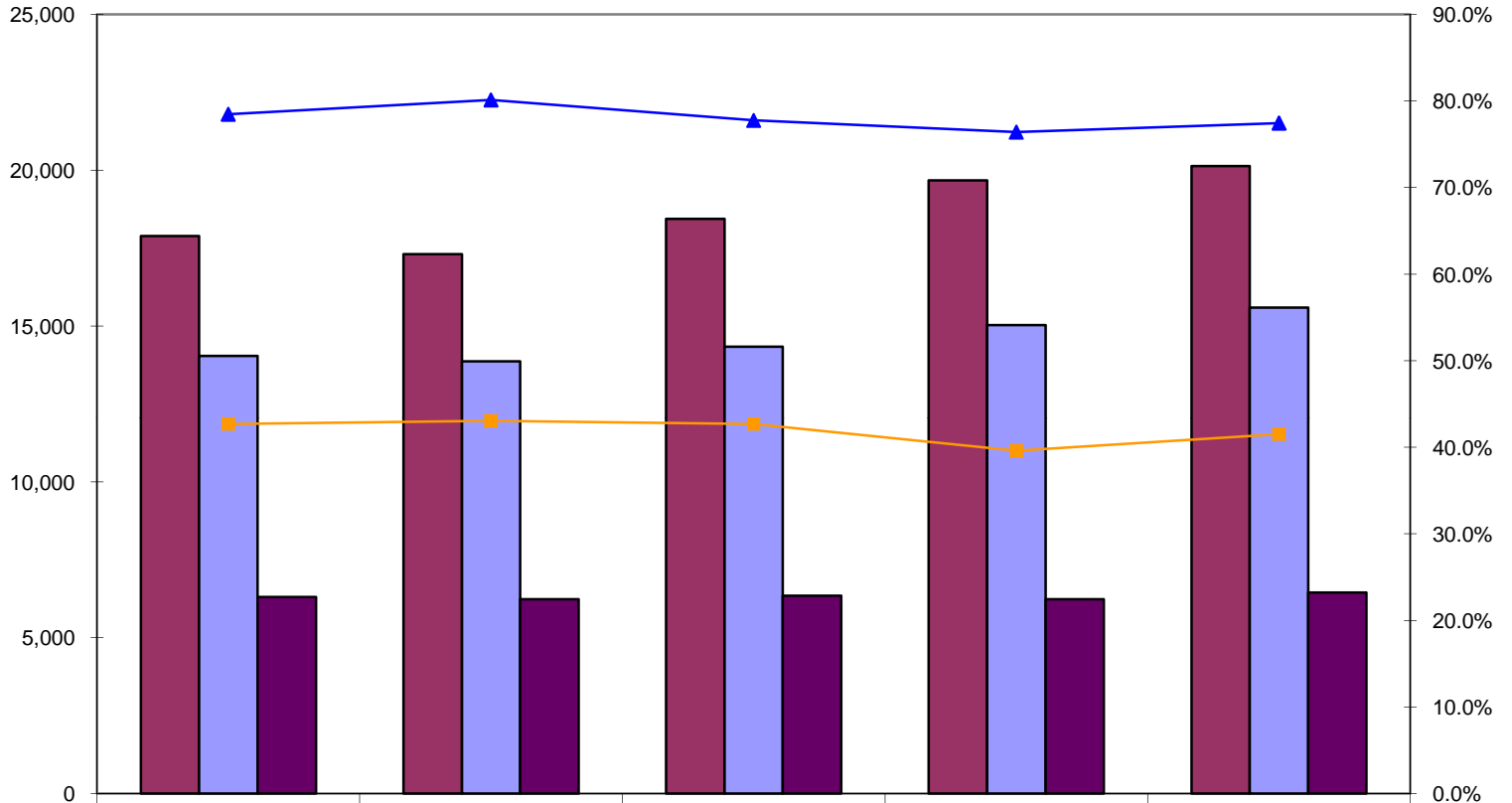
## SUMMARY OF FALL 2008 ADMISSIONS RATES

---

### HIGHLIGHTS

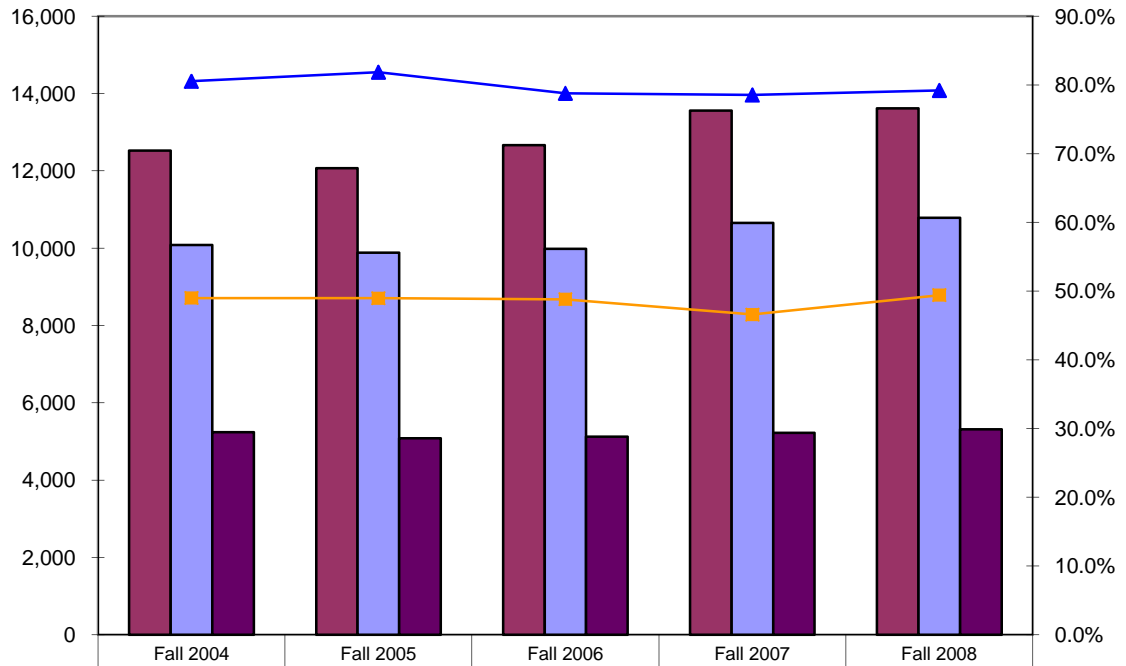
- **Fall 2008, 20,133 first-time, first-year and transfer students applied for admission to the UMS, a 2.3% increase over last year's 19,671. Of those, 15,594 were accepted, a 3.7% increase from the 15,031 in Fall 2007. 6,448 students enrolled, an 3.4% increase from 6,237 students the previous year.**
- **UMS out-of-state student applications increased by 400 students, 6.5%, from 6,114 in Fall 2007 to 6,514 in Fall 2008. Acceptance increased by 423 students, 9.7%, and 127 more students enrolled, increasing by 12.6%.**
- **UMS had a 5.9% increase, 257 students, in first-time enrollments. Total in-state applicants increased by 4.3%, or 664 students, and total acceptances increased by 5.0%, or 598 students.**
- **UMS transfer student applications decreased by -202 students, -4.6%. Transfer acceptances decreased by -35 students, -1.1%. There were -46 fewer students, -2.4%, enrolling in Fall 2008 than Fall 2007.**

## Total Undergraduate Applicants, Acceptances, and Enrolled Students First-time, First-year Students & Transfer Students



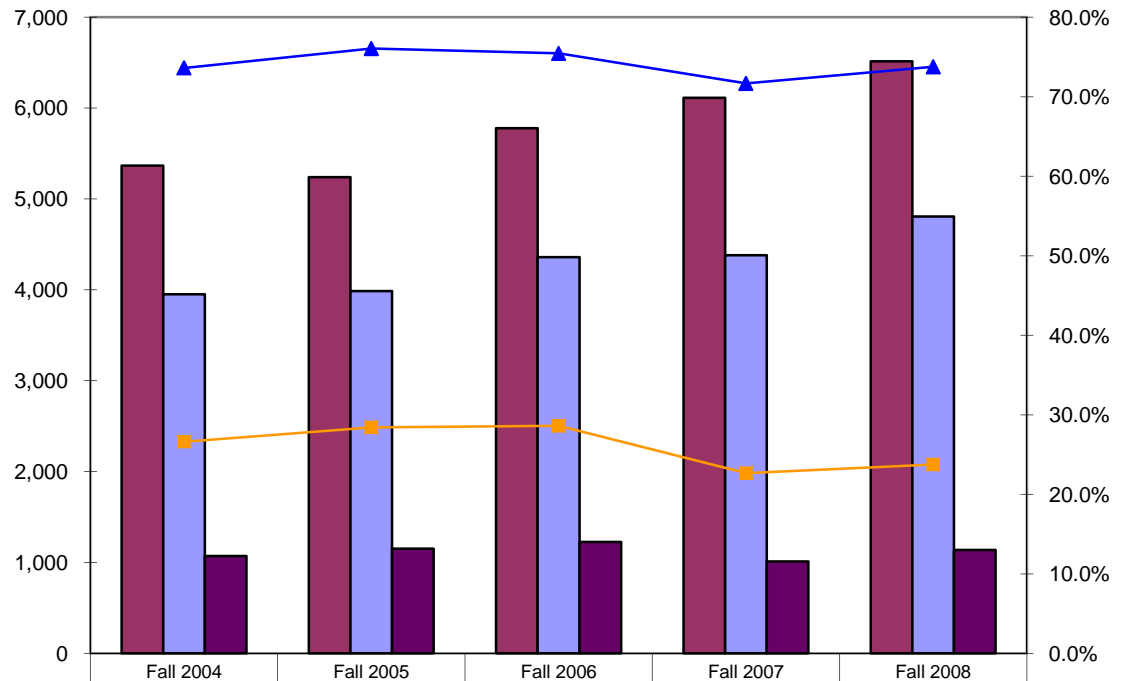
<span style="color: maroon;">■</span> Applied	17,887	17,306	18,443	19,671	20,133
<span style="color: lightblue;">■</span> Accepted	14,036	13,866	14,340	15,031	15,594
<span style="color: purple;">■</span> Enrolled	6,308	6,235	6,346	6,237	6,448
<span style="color: blue;">▲</span> % of Applied Accepted	78.5%	80.1%	77.8%	76.4%	77.5%
<span style="color: orange;">■</span> % of Accepted Enrolled	42.7%	43.1%	42.7%	39.6%	41.5%

### Total Undergraduate In-State Applicants, Acceptances, and Enrolled Students



Applied	12,521	12,068	12,665	13,557	13,619
Accepted	10,085	9,881	9,980	10,649	10,789
Enrolled	5,239	5,083	5,121	5,227	5,311
% of Applied Accepted	80.5%	81.9%	78.8%	78.5%	79.2%
% of Accepted Enrolled	49.0%	49.0%	48.8%	46.6%	49.4%

### Total Undergraduate Out-of-State Applicants, Acceptances, and Enrolled Students



Applied	5,366	5,238	5,778	6,114	6,514
Accepted	3,951	3,985	4,360	4,382	4,805
Enrolled	1,069	1,152	1,225	1,010	1,137
% of Applied Accepted	73.6%	76.1%	75.5%	71.7%	73.8%
% of Accepted Enrolled	26.6%	28.4%	28.6%	22.7%	23.7%

**Total Undergraduate Applicants, Acceptances, and Enrolled Students  
First-time, First-year Students & Transfer Students**

Change from  
2007 to 2008

			Fall 2004	Fall 2005	Fall 2006	Fall 2007	Fall 2008	#	%
<b>UMS</b>	<b>In-State</b>	<b>Applied</b>	12,521	12,068	12,665	13,557	13,619	62	0.5%
		<b>Accepted</b>	10,085	9,881	9,980	10,649	10,789	140	1.3%
		<b>% of Applied Accepted</b>	80.5%	81.9%	78.8%	78.5%	79.2%		
		<b>Enrolled</b>	3,595	5,083	5,121	5,227	5,311	84	1.6%
		<b>% of Accepted Enrolled</b>	35.6%	51.4%	51.3%	49.1%	49.2%		
	<b>Out-of-State</b>	<b>Applied</b>	5,366	5,238	5,778	6,114	6,514	400	6.5%
		<b>Accepted</b>	3,951	3,985	4,360	4,382	4,805	423	9.7%
		<b>% of Applied Accepted</b>	73.6%	76.1%	75.5%	71.7%	73.8%		
		<b>Enrolled</b>	754	1,152	1,225	1,010	1,137	127	12.6%
		<b>% of Accepted Enrolled</b>	19.1%	28.9%	28.1%	23.0%	23.7%		
	<b>Total</b>	<b>Applied</b>	17,887	17,306	18,443	19,671	20,133	462	2.3%
		<b>Accepted</b>	14,036	13,866	14,340	15,031	15,594	563	3.7%
		<b>% of Applied Accepted</b>	78.5%	80.1%	77.8%	76.4%	77.5%		
		<b>Enrolled</b>	4,215	6,235	6,346	6,237	6,448	211	3.4%
		<b>% of Accepted Enrolled</b>	30.0%	45.0%	44.3%	41.5%	41.3%		
<b>UM</b>	<b>In-State</b>	<b>Applied</b>	4,405	4,374	4,545	5,089	5,191	102	2.0%
		<b>Accepted</b>	3,493	3,510	3,606	4,025	4,068	43	1.1%
		<b>% of Applied Accepted</b>	79.3%	80.2%	79.3%	79.1%	78.4%		
		<b>Enrolled</b>	1,387	1,755	1,824	1,958	1,985	27	1.4%
		<b>% of Accepted Enrolled</b>	39.7%	50.0%	50.6%	48.6%	48.8%	0	
	<b>Out-of-State</b>	<b>Applied</b>	2,079	2,154	2,488	2,957	3,247	290	9.8%
		<b>Accepted</b>	1,582	1,691	1,917	2,083	2,366	283	13.6%
		<b>% of Applied Accepted</b>	76.1%	78.5%	77.0%	70.4%	72.9%		
		<b>Enrolled</b>	279	398	493	409	540	131	32.0%
		<b>% of Accepted Enrolled</b>	17.6%	23.5%	25.7%	19.6%	22.8%		
	<b>Subtotal</b>	<b>Applied</b>	6,484	6,528	7,033	8,046	8,438	392	4.9%
		<b>Accepted</b>	5,075	5,201	5,523	6,108	6,434	326	5.3%
		<b>% of Applied Accepted</b>	78.3%	79.7%	78.5%	75.9%	76.3%		
		<b>Enrolled</b>	1,666	2,153	2,317	2,367	2,525	158	6.7%
		<b>% of Accepted Enrolled</b>	32.8%	41.4%	42.0%	38.8%	39.2%		

**Total Undergraduate Applicants, Acceptances, and Enrolled Students  
First-time, First-year Students & Transfer Students**

Change from  
2007 to 2008

			Fall 2004	Fall 2005	Fall 2006	Fall 2007	Fall 2008	#	%
UMA	In-State	Applied	1,704	1,641	1,993	1,858	2,033	175	9.4%
		Accepted	1,674	1,611	1,634	1,491	1,610	119	8.0%
		% of Applied Accepted	98.2%	98.2%	82.0%	80.2%	79.2%		
		Enrolled	600	875	869	881	950	69	7.8%
		% of Accepted Enrolled	35.8%	54.3%	53.2%	59.1%	59.0%		
	Out-of-State	Applied	103	87	140	138	182	44	31.9%
		Accepted	103	87	92	80	115	35	43.8%
		% of Applied Accepted	100.0%	100.0%	65.7%	58.0%	63.2%		
		Enrolled	4	29	34	21	37	16	76.2%
		% of Accepted Enrolled	3.9%	33.3%	37.0%	26.3%	32.2%		
	Subtotal	Applied	1,807	1,728	2,133	1,996	2,215	219	11.0%
		Accepted	1,777	1,698	1,726	1,571	1,725	154	9.8%
		% of Applied Accepted	98.3%	98.3%	80.9%	78.7%	77.9%		
		Enrolled	604	904	903	902	987	85	9.4%
		% of Accepted Enrolled	34.0%	53.2%	52.3%	57.4%	57.2%		
UMF	In-State	Applied	1,414	1,344	1,349	1,424	1,448	24	1.7%
		Accepted	1,035	982	933	1,010	1,096	86	8.5%
		% of Applied Accepted	73.2%	73.1%	69.2%	70.9%	75.7%		
		Enrolled	431	525	488	472	499	27	5.7%
		% of Accepted Enrolled	41.6%	53.5%	52.3%	46.7%	45.5%		
	Out-of-State	Applied	501	504	606	595	638	43	7.2%
		Accepted	330	350	454	405	442	37	9.1%
		% of Applied Accepted	65.9%	69.4%	74.9%	68.1%	69.3%		
		Enrolled	84	143	138	95	115	20	21.1%
		% of Accepted Enrolled	25.5%	40.9%	30.4%	23.5%	26.0%		
	Subtotal	Applied	1,915	1,848	1,955	2,019	2,086	67	3.3%
		Accepted	1,365	1,332	1,387	1,415	1,538	123	8.7%
		% of Applied Accepted	71.3%	72.1%	70.9%	70.1%	73.7%		
		Enrolled	515	668	626	567	614	47	8.3%
		% of Accepted Enrolled	37.7%	50.2%	45.1%	40.1%	39.9%		

**Total Undergraduate Applicants, Acceptances, and Enrolled Students  
First-time, First-year Students & Transfer Students**

Change from  
2007 to 2008

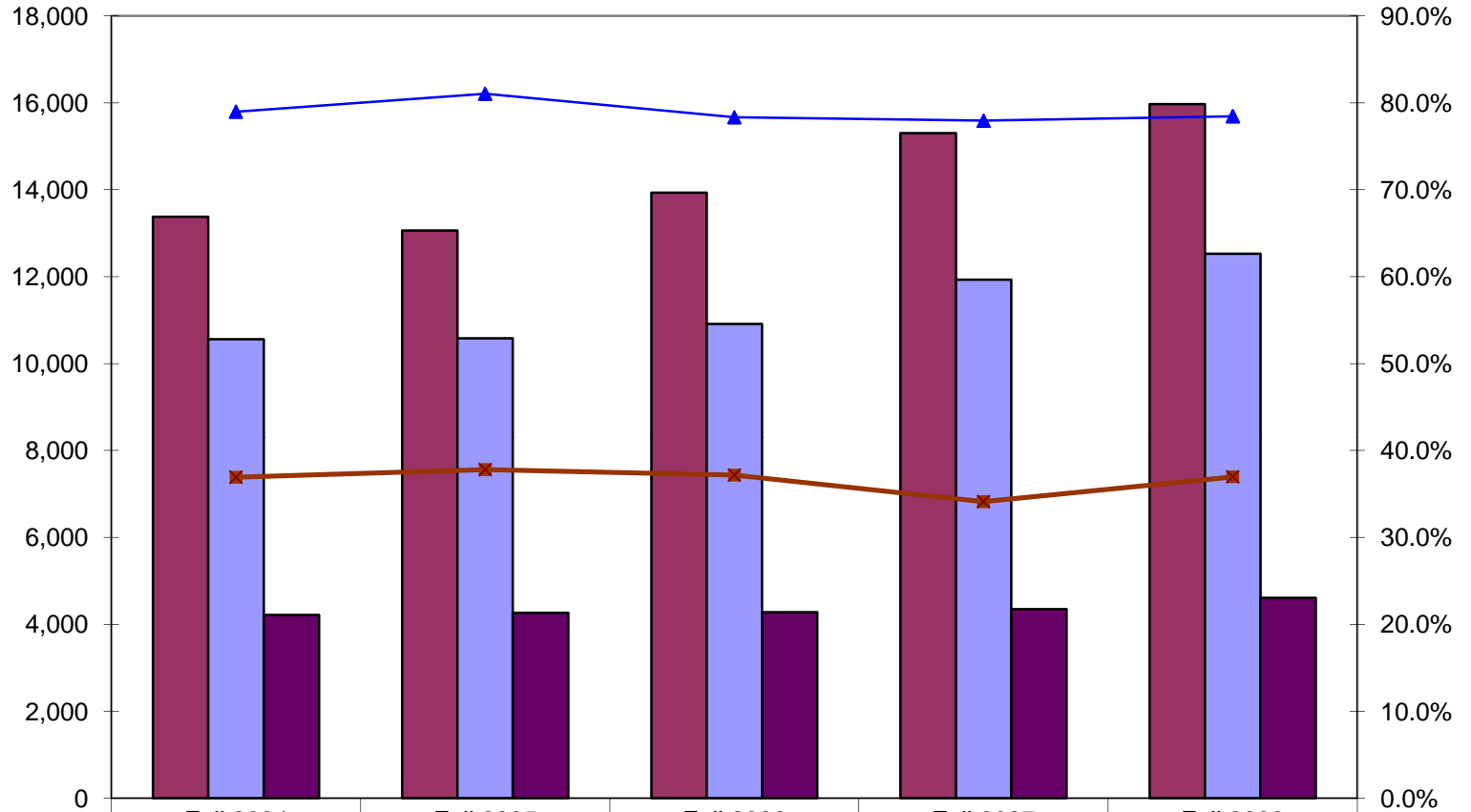
			Fall 2004	Fall 2005	Fall 2006	Fall 2007	Fall 2008	#	%
UMFK	In-State	Applied	391	350	332	419	343	-76	-18.1%
		Accepted	340	302	281	357	276	-81	-22.7%
		% of Applied Accepted	87.0%	86.3%	84.6%	85.2%	80.5%		
		Enrolled	139	158	139	162	134	-28	-17.3%
		% of Accepted Enrolled	40.9%	52.3%	49.5%	45.4%	48.6%		
	Out-of-State	Applied	518	413	407	386	263	-123	-31.9%
		Accepted	340	276	261	255	171	-84	-32.9%
		% of Applied Accepted	65.6%	66.8%	64.1%	66.1%	65.0%		
		Enrolled	164	150	110	147	73	-74	-50.3%
		% of Accepted Enrolled	48.2%	54.3%	42.1%	57.6%	42.7%		
	Subtotal	Applied	909	763	739	805	606	-199	-24.7%
		Accepted	680	578	542	612	447	-165	-27.0%
		% of Applied Accepted	74.8%	75.8%	73.3%	76.0%	73.8%		
		Enrolled	169	308	249	309	207	-102	-33.0%
		% of Accepted Enrolled	24.9%	53.3%	45.9%	50.5%	46.3%		
UMM	In-State	Applied	258	255	271	280	276	-4	-1.4%
		Accepted	211	205	212	229	230	1	0.4%
		% of Applied Accepted	81.8%	80.4%	78.2%	81.8%	83.3%		
		Enrolled	55	106	113	100	113	13	13.0%
		% of Accepted Enrolled	26.1%	51.7%	53.3%	43.7%	49.1%		
	Out-of-State	Applied	200	200	183	217	196	-21	-9.7%
		Accepted	157	154	140	179	146	-33	-18.4%
		% of Applied Accepted	78.5%	77.0%	76.5%	82.5%	74.5%		
		Enrolled	32	40	43	46	51	5	10.9%
		% of Accepted Enrolled	20.4%	26.0%	30.7%	25.7%	34.9%		
	Subtotal	Applied	458	455	454	497	472	-25	-5.0%
		Accepted	368	359	352	408	376	-32	-7.8%
		% of Applied Accepted	80.3%	78.9%	77.5%	82.1%	79.7%		
		Enrolled	87	146	156	146	164	18	12.3%
		% of Accepted Enrolled	23.6%	40.7%	44.3%	35.8%	43.6%		

**Total Undergraduate Applicants, Acceptances, and Enrolled Students  
First-time, First-year Students & Transfer Students**

Change from  
2007 to 2008

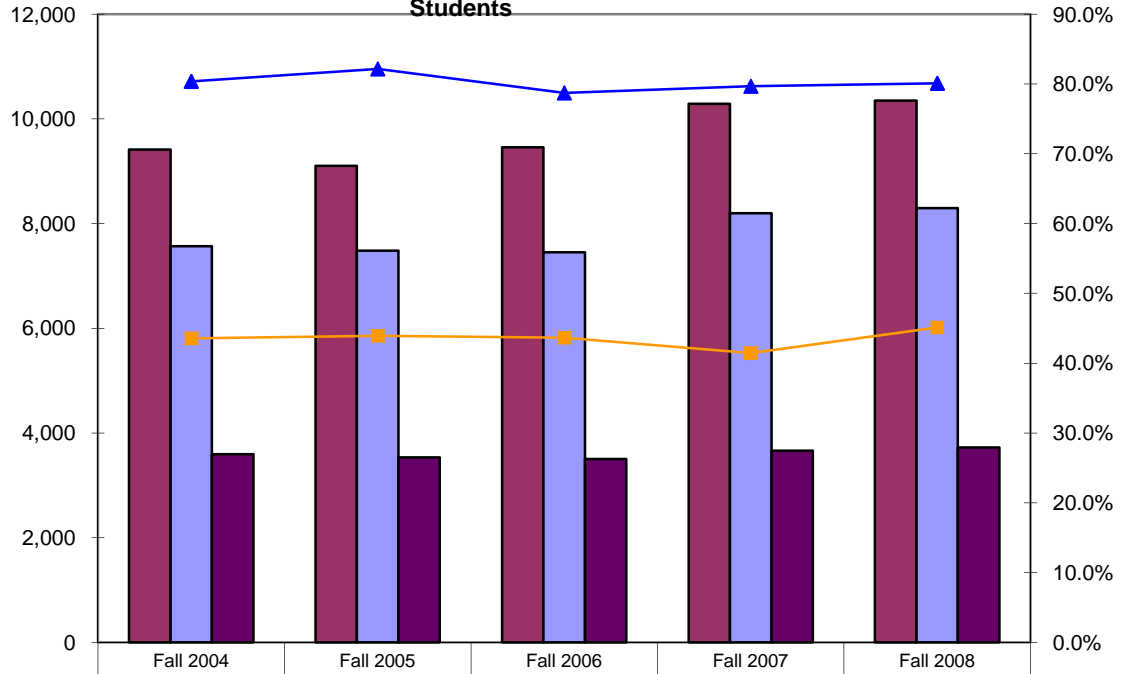
			Fall 2004	Fall 2005	Fall 2006	Fall 2007	Fall 2008	#	%
UMPI	In-State	Applied	564	519	514	516	508	-8	-1.6%
		Accepted	483	446	433	428	416	-12	-2.8%
		% of Applied Accepted	85.6%	85.9%	84.2%	82.9%	81.9%		
		Enrolled	209	238	253	235	231	-4	-1.7%
		% of Accepted Enrolled	43.3%	53.4%	58.4%	54.9%	55.5%		
	Out-of-State	Applied	407	436	454	137	103	-34	-24.8%
		Accepted	342	324	353	91	83	-8	-8.8%
		% of Applied Accepted	84.0%	74.3%	77.8%	66.4%	80.6%		
		Enrolled	35	156	172	36	38	2	5.6%
		% of Accepted Enrolled	10.2%	48.1%	48.7%	39.6%	45.8%		
	Subtotal	Applied	971	955	968	653	611	-42	-6.4%
		Accepted	825	770	786	519	499	-20	-3.9%
		% of Applied Accepted	85.0%	80.6%	81.2%	79.5%	81.7%		
		Enrolled	244	394	425	271	269	-2	-0.7%
		% of Accepted Enrolled	29.6%	51.2%	54.1%	52.2%	53.9%		
USM	In-State	Applied	3,785	3,585	3,661	3,971	3,820	-151	-3.8%
		Accepted	2,849	2,825	2,881	3,109	3,093	-16	-0.5%
		% of Applied Accepted	75.3%	78.8%	78.7%	78.3%	81.0%		
		Enrolled	774	1,426	1,435	1,419	1,399	-20	-1.4%
		% of Accepted Enrolled	27.2%	50.5%	49.8%	45.6%	45.2%		
	Out-of-State	Applied	1,558	1,444	1,500	1,684	1,885	201	11.9%
		Accepted	1,097	1,103	1,143	1,289	1,482	193	15.0%
		% of Applied Accepted	70.4%	76.4%	76.2%	76.5%	78.6%		
		Enrolled	156	236	235	256	283	27	10.5%
		% of Accepted Enrolled	14.2%	21.4%	20.6%	19.9%	19.1%		
	Subtotal	Applied	5,343	5,029	5,161	5,655	5,705	50	0.9%
		Accepted	3,946	3,928	4,024	4,398	4,575	177	4.0%
		% of Applied Accepted	73.9%	78.1%	78.0%	77.8%	80.2%		
		Enrolled	930	1,662	1,670	1,675	1,682	7	0.4%
		% of Accepted Enrolled	23.6%	42.3%	41.5%	38.1%	36.8%		

### Undergraduate First-Time, First-Year Applicants, Acceptances, and Enrolled Students In-State & Out-of-State



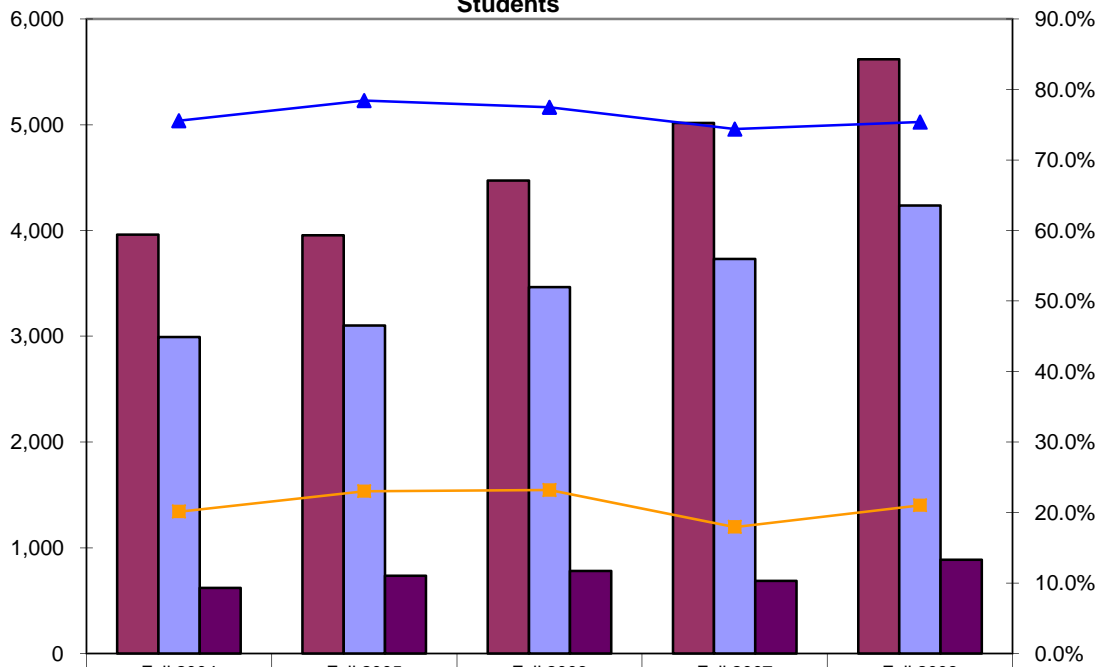
	Fall 2004	Fall 2005	Fall 2006	Fall 2007	Fall 2008
Applied	13,375	13,060	13,931	15,305	15,969
Accepted	10,562	10,583	10,913	11,930	12,528
Enrolled	4,215	4,266	4,282	4,351	4,608
▲ % of Applied Accepted	79.0%	81.0%	78.3%	77.9%	78.5%
■ % of Accepted Enrolled	36.9%	37.8%	37.2%	34.1%	37.0%

### In-State, Undergraduate First-Time, First-year Applicants, Acceptances, and Enrolled Students



Applied	9,415	9,105	9,460	10,289	10,351
Accepted	7,569	7,481	7,449	8,199	8,293
Enrolled	3,595	3,531	3,501	3,664	3,721
% of Applied Accepted	80.4%	82.2%	78.7%	79.7%	80.1%
% of Accepted Enrolled	43.6%	43.9%	43.7%	41.4%	45.1%

### Out-of-State, Undergraduate First-Time, First-year Applicants, Acceptances, and Enrolled Students



Applied	3,960	3,955	4,471	5,016	5,618
Accepted	2,993	3,102	3,464	3,731	4,235
Enrolled	620	735	781	687	887
% of Applied Accepted	75.6%	78.4%	77.5%	74.4%	75.4%
% of Accepted Enrolled	20.1%	23.0%	23.2%	18.0%	21.0%

**First-time, First-Year Undergraduate Applicants, Acceptances, and Enrolled Students**

Change from  
2007 to 2008

			Fall 2004	Fall 2005	Fall 2006	Fall 2007	Fall 2008	#	%
<b>UMS</b>	<b>In-State</b>	<b>Applied</b>	9,415	9,105	9,460	10,289	10,351	62	0.6%
		<b>Accepted</b>	7,569	7,481	7,449	8,199	8,293	94	1.1%
		<b>% of Applied Accepted</b>	80.4%	82.2%	78.7%	79.7%	80.1%		
		<b>Enrolled</b>	3,595	3,531	3,501	3,664	3,721	57	1.6%
		<b>% of Accepted Enrolled</b>	47.5%	47.2%	47.0%	44.7%	44.9%		
	<b>Out-of-State</b>	<b>Applied</b>	3,960	3,955	4,471	5,016	5,618	602	12.0%
		<b>Accepted</b>	2,993	3,102	3,464	3,731	4,235	504	13.5%
		<b>% of Applied Accepted</b>	75.6%	78.4%	77.5%	74.4%	75.4%		
		<b>Enrolled</b>	620	735	781	687	887	200	29.1%
		<b>% of Accepted Enrolled</b>	20.7%	23.7%	22.5%	18.4%	20.9%		
	<b>Total</b>	<b>Applied</b>	13,375	13,060	13,931	15,305	15,969	664	4.3%
		<b>Accepted</b>	10,562	10,583	10,913	11,930	12,528	598	5.0%
		<b>% of Applied Accepted</b>	79.0%	81.0%	78.3%	77.9%	78.5%		
		<b>Enrolled</b>	4,215	4,266	4,282	4,351	4,608	257	5.9%
		<b>% of Accepted Enrolled</b>	39.9%	40.3%	39.2%	36.5%	36.8%		
<b>UM</b>	<b>In-State</b>	<b>Applied</b>	3,681	3,689	3,824	4,326	4,420	94	2.2%
		<b>Accepted</b>	2,936	2,978	3,045	3,475	3,513	38	1.1%
		<b>% of Applied Accepted</b>	79.8%	80.7%	79.6%	80.3%	79.5%		
		<b>Enrolled</b>	1,387	1,400	1,442	1,594	1,591	-3	-0.2%
		<b>% of Accepted Enrolled</b>	47.2%	47.0%	47.4%	45.9%	45.3%	0	
	<b>Out-of-State</b>	<b>Applied</b>	1,871	1,965	2,227	2,654	2,994	340	12.8%
		<b>Accepted</b>	1,441	1,556	1,755	1,918	2,224	306	16.0%
		<b>% of Applied Accepted</b>	77.0%	79.2%	78.8%	72.3%	74.3%		
		<b>Enrolled</b>	279	354	422	339	470	131	38.6%
		<b>% of Accepted Enrolled</b>	19.4%	22.8%	24.0%	17.7%	21.1%		
	<b>Subtotal</b>	<b>Applied</b>	5,552	5,654	6,051	6,980	7,414	434	6.2%
		<b>Accepted</b>	4,377	4,534	4,800	5,393	5,737	344	6.4%
		<b>% of Applied Accepted</b>	78.8%	80.2%	79.3%	77.3%	77.4%		
		<b>Enrolled</b>	1,666	1,754	1,864	1,933	2,061	128	6.6%
		<b>% of Accepted Enrolled</b>	38.1%	38.7%	38.8%	35.8%	35.9%		

**First-time, First-Year Undergraduate Applicants, Acceptances, and Enrolled Students**

Change from  
2007 to 2008

			Fall 2004	Fall 2005	Fall 2006	Fall 2007	Fall 2008	#	%
UMA	In-State	Applied	1,095	1,022	1,265	1,139	1,202	63	5.5%
		Accepted	1,076	1,000	1,040	909	958	49	5.4%
		% of Applied Accepted	98.3%	97.8%	82.2%	79.8%	79.7%		
		Enrolled	600	519	532	537	561	24	4.5%
		% of Accepted Enrolled	55.8%	51.9%	51.2%	59.1%	58.6%		
	Out-of-State	Applied	33	35	67	71	79	8	11.3%
		Accepted	33	35	37	38	42	4	10.5%
		% of Applied Accepted	100.0%	100.0%	55.2%	53.5%	53.2%		
		Enrolled	4	7	7	3	7	4	133.3%
		% of Accepted Enrolled	12.1%	20.0%	18.9%	7.9%	16.7%		
	Subtotal	Applied	1,128	1,057	1,332	1,210	1,281	71	5.9%
		Accepted	1,109	1,035	1,077	947	1,000	53	5.6%
		% of Applied Accepted	98.3%	97.9%	80.9%	78.3%	78.1%		
		Enrolled	604	526	539	540	568	28	5.2%
		% of Accepted Enrolled	54.5%	50.8%	50.0%	57.0%	56.8%		
UMF	In-State	Applied	1,207	1,130	1,140	1,248	1,254	6	0.5%
		Accepted	884	846	804	891	951	60	6.7%
		% of Applied Accepted	73.2%	74.9%	70.5%	71.4%	75.8%		
		Enrolled	431	436	398	398	412	14	3.5%
		% of Accepted Enrolled	48.8%	51.5%	49.5%	44.7%	43.3%		
	Out-of-State	Applied	438	451	564	538	581	43	8.0%
		Accepted	296	327	427	377	411	34	9.0%
		% of Applied Accepted	67.6%	72.5%	75.7%	70.1%	70.7%		
		Enrolled	84	128	122	84	104	20	23.8%
		% of Accepted Enrolled	28.4%	39.1%	28.6%	22.3%	25.3%		
	Subtotal	Applied	1,645	1,581	1,704	1,786	1,835	49	2.7%
		Accepted	1,180	1,173	1,231	1,268	1,362	94	7.4%
		% of Applied Accepted	71.7%	74.2%	72.2%	71.0%	74.2%		
		Enrolled	515	564	520	482	516	34	7.1%
		% of Accepted Enrolled	43.6%	48.1%	42.2%	38.0%	37.9%		

**First-time, First-Year Undergraduate Applicants, Acceptances, and Enrolled Students**

Change from  
2007 to 2008

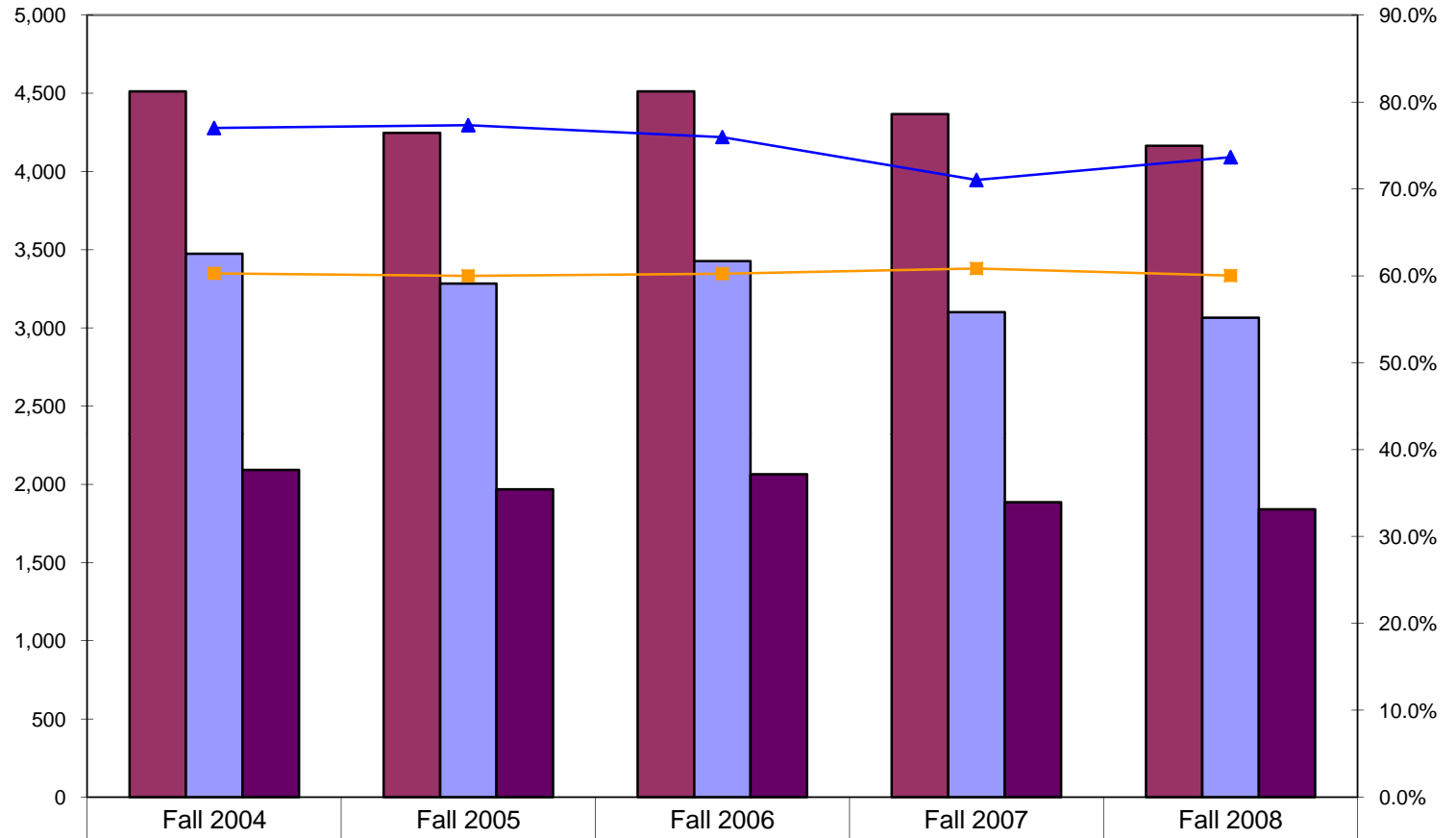
			Fall 2004	Fall 2005	Fall 2006	Fall 2007	Fall 2008	#	%
UMFK	In-State	Applied	277	246	230	286	237	-49	-17.1%
		Accepted	249	229	204	249	201	-48	-19.3%
		% of Applied Accepted	89.9%	93.1%	88.7%	87.1%	84.8%		
		Enrolled	139	117	101	103	97	-6	-5.8%
		% of Accepted Enrolled	55.8%	51.1%	49.5%	41.4%	48.3%		
	Out-of-State	Applied	120	81	167	121	110	-11	-9.1%
		Accepted	69	47	113	90	65	-25	-27.8%
		% of Applied Accepted	57.5%	58.0%	67.7%	74.4%	59.1%		
		Enrolled	30	15	16	31	22	-9	-29.0%
		% of Accepted Enrolled	43.5%	31.9%	14.2%	34.4%	33.8%		
	Subtotal	Applied	397	327	397	407	347	-60	-14.7%
		Accepted	318	276	317	339	266	-73	-21.5%
		% of Applied Accepted	80.1%	84.4%	79.8%	83.3%	76.7%		
		Enrolled	169	132	117	134	119	-15	-11.2%
		% of Accepted Enrolled	53.1%	47.8%	36.9%	39.5%	44.7%		
UMM	In-State	Applied	212	200	210	235	215	-20	-8.5%
		Accepted	170	164	162	191	179	-12	-6.3%
		% of Applied Accepted	80.2%	82.0%	77.1%	81.3%	83.3%		
		Enrolled	55	81	78	75	77	2	2.7%
		% of Accepted Enrolled	32.4%	49.4%	48.1%	39.3%	43.0%		
	Out-of-State	Applied	165	167	143	173	158	-15	-8.7%
		Accepted	140	138	116	151	126	-25	-16.6%
		% of Applied Accepted	84.8%	82.6%	81.1%	87.3%	79.7%		
		Enrolled	32	33	29	35	40	5	14.3%
		% of Accepted Enrolled	22.9%	23.9%	25.0%	23.2%	31.7%		
	Subtotal	Applied	377	367	353	408	373	-35	-8.6%
		Accepted	310	302	278	342	305	-37	-10.8%
		% of Applied Accepted	82.2%	82.3%	78.8%	83.8%	81.8%		
		Enrolled	87	114	107	110	117	7	6.4%
		% of Accepted Enrolled	28.1%	37.7%	38.5%	32.2%	38.4%		

**First-time, First-Year Undergraduate Applicants, Acceptances, and Enrolled Students**

Change from  
2007 to 2008

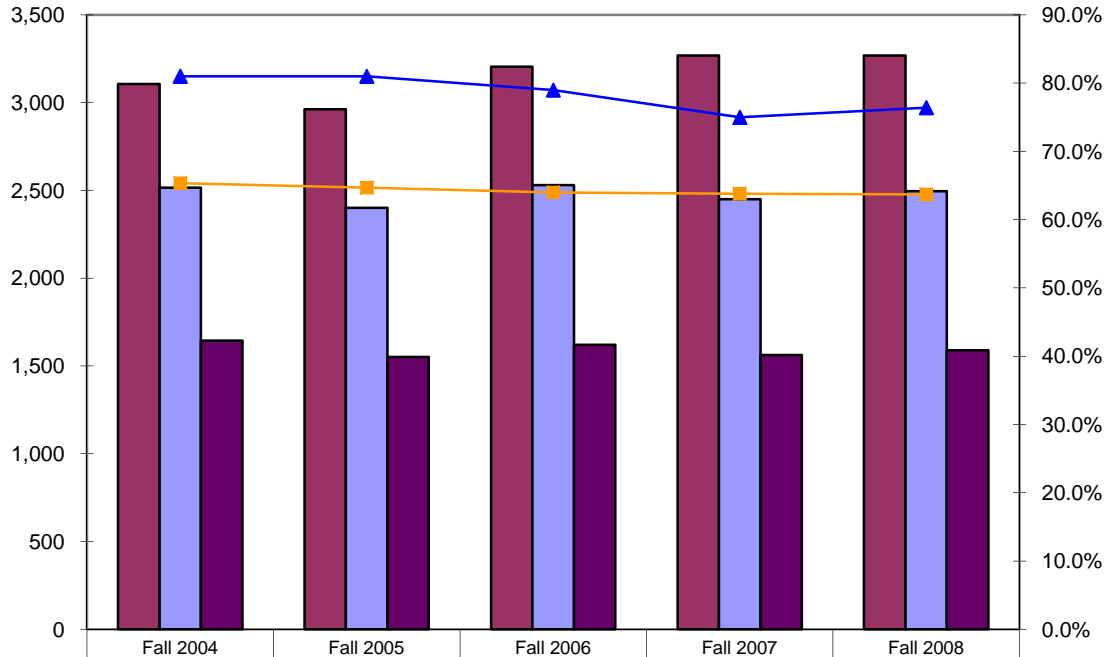
			Fall 2004	Fall 2005	Fall 2006	Fall 2007	Fall 2008	#	%
UMPI	In-State	Applied	434	394	368	401	405	4	1.0%
		Accepted	381	346	311	352	342	-10	-2.8%
		% of Applied Accepted	87.8%	87.8%	84.5%	87.8%	84.4%		
		Enrolled	209	174	175	185	177	-8	-4.3%
		% of Accepted Enrolled	54.9%	50.3%	56.3%	52.6%	51.8%		
	Out-of-State	Applied	106	85	89	77	73	-4	-5.2%
		Accepted	89	70	71	57	58	1	1.8%
		% of Applied Accepted	84.0%	82.4%	79.8%	74.0%	79.5%		
		Enrolled	35	27	24	18	23	5	27.8%
		% of Accepted Enrolled	39.3%	38.6%	33.8%	31.6%	39.7%		
	Subtotal	Applied	540	479	457	478	478	0	0.0%
		Accepted	470	416	382	409	400	-9	-2.2%
		% of Applied Accepted	87.0%	86.8%	83.6%	85.6%	83.7%		
		Enrolled	244	201	199	203	200	-3	-1.5%
		% of Accepted Enrolled	51.9%	48.3%	52.1%	49.6%	50.0%		
USM	In-State	Applied	2,509	2,424	2,423	2,654	2,618	-36	-1.4%
		Accepted	1,873	1,918	1,883	2,132	2,149	17	0.8%
		% of Applied Accepted	74.7%	79.1%	77.7%	80.3%	82.1%		
		Enrolled	774	804	775	772	806	34	4.4%
		% of Accepted Enrolled	41.3%	41.9%	41.2%	36.2%	37.5%		
	Out-of-State	Applied	1,227	1,171	1,214	1,382	1,623	241	17.4%
		Accepted	925	929	945	1,100	1,309	209	19.0%
		% of Applied Accepted	75.4%	79.3%	77.8%	79.6%	80.7%		
		Enrolled	156	171	161	177	221	44	24.9%
		% of Accepted Enrolled	16.9%	18.4%	17.0%	16.1%	16.9%		
	Subtotal	Applied	3,736	3,595	3,637	4,036	4,241	205	5.1%
		Accepted	2,798	2,847	2,828	3,232	3,458	226	7.0%
		% of Applied Accepted	74.9%	79.2%	77.8%	80.1%	81.5%		
		Enrolled	930	975	936	949	1,027	78	8.2%
		% of Accepted Enrolled	33.2%	34.2%	33.1%	29.4%	29.7%		

## Total Undergraduate Transfer Applicants, Acceptances, and Enrolled Students



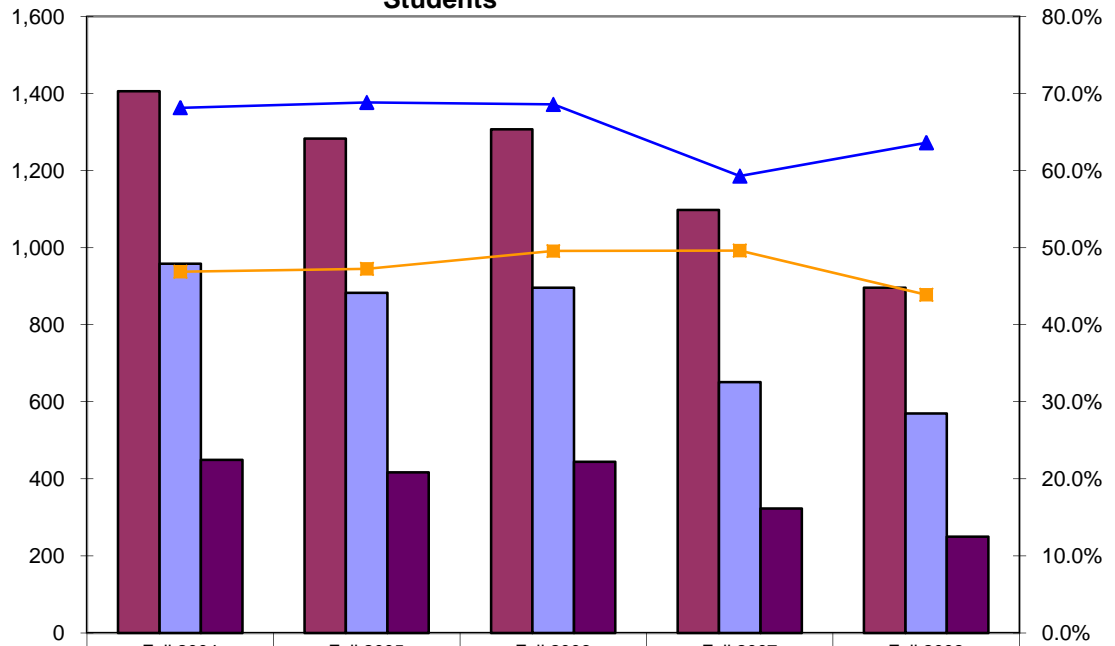
Applied	4,512	4,246	4,512	4,366	4,164
Accepted	3,474	3,283	3,427	3,101	3,066
Enrolled	2,093	1,969	2,064	1,886	1,840
% of Applied Accepted	77.0%	77.3%	76.0%	71.0%	73.6%
% of Accepted Enrolled	60.2%	60.0%	60.2%	60.8%	60.0%

### In-State, Undgraduate Transfer Applicants, Acceptances, and Enrolled Students



	Fall 2004	Fall 2005	Fall 2006	Fall 2007	Fall 2008
Applied	3,106	2,963	3,205	3,268	3,268
Accepted	2,516	2,400	2,531	2,450	2,496
Enrolled	1,644	1,552	1,620	1,563	1,590
% of Applied Accepted	81.0%	81.0%	79.0%	75.0%	76.4%
% of Accepted Enrolled	65.3%	64.7%	64.0%	63.8%	63.7%

### Out-of-State, Undergraduate Transfer Applicants, Acceptances, and Enrolled Students



	Fall 2004	Fall 2005	Fall 2006	Fall 2007	Fall 2008
Applied	1,406	1,283	1,307	1,098	896
Accepted	958	883	896	651	570
Enrolled	449	417	444	323	250
% of Applied Accepted	68.1%	68.8%	68.6%	59.3%	63.6%
% of Accepted Enrolled	46.9%	47.2%	49.6%	49.6%	43.9%

## Transfer Undergraduate Applicants, Acceptances, and Enrolled Students

Change from  
2007 to 2008

			Fall 2004	Fall 2005	Fall 2006	Fall 2007	Fall 2008	#	%
UMS	In-State	Applied	3,106	2,963	3,205	3,268	3,268	0	0.0%
		Accepted	2,516	2,400	2,531	2,450	2,496	46	1.9%
		% of Applied Accepted	81.0%	81.0%	79.0%	75.0%	76.4%		
		Enrolled	1,644	1,552	1,620	1,563	1,590	27	1.7%
		% of Accepted Enrolled	65.3%	64.7%	64.0%	63.8%	63.7%		
	Out-of-State	Applied	1,406	1,283	1,307	1,098	896	-202	-18.4%
		Accepted	958	883	896	651	570	-81	-12.4%
		% of Applied Accepted	68.1%	68.8%	68.6%	59.3%	63.6%		
		Enrolled	449	417	444	323	250	-73	-22.6%
		% of Accepted Enrolled	46.9%	47.2%	49.6%	49.6%	43.9%		
	Total	Applied	4,512	4,246	4,512	4,366	4,164	-202	-4.6%
		Accepted	3,474	3,283	3,427	3,101	3,066	-35	-1.1%
		% of Applied Accepted	77.0%	77.3%	76.0%	71.0%	73.6%		
		Enrolled	2,093	1,969	2,064	1,886	1,840	-46	-2.4%
		% of Accepted Enrolled	60.2%	60.0%	60.2%	60.8%	60.0%		
UM	In-State	Applied	724	685	721	763	771	8	1.0%
		Accepted	557	532	561	550	555	5	0.9%
		% of Applied Accepted	76.9%	77.7%	77.8%	72.1%	72.0%		
		Enrolled	377	355	382	364	394	30	8.2%
		% of Accepted Enrolled	67.7%	66.7%	68.1%	66.2%	71.0%	0	
	Out-of-State	Applied	208	189	261	303	253	-50	-16.5%
		Accepted	141	135	162	165	142	-23	-13.9%
		% of Applied Accepted	67.8%	71.4%	62.1%	54.5%	56.1%		
		Enrolled	53	44	71	70	70	0	0.0%
		% of Accepted Enrolled	37.6%	32.6%	43.8%	42.4%	49.3%		
	Subtotal	Applied	932	874	982	1,066	1,024	-42	-3.9%
		Accepted	698	667	723	715	697	-18	-2.5%
		% of Applied Accepted	74.9%	76.3%	73.6%	67.1%	68.1%		
		Enrolled	430	399	453	434	464	30	6.9%
		% of Accepted Enrolled	61.6%	59.8%	62.7%	60.7%	66.6%		

## Transfer Undergraduate Applicants, Acceptances, and Enrolled Students

Change from  
2007 to 2008

			Fall 2004	Fall 2005	Fall 2006	Fall 2007	Fall 2008	#	%
UMA	In-State	Applied	609	619	728	719	831	112	15.6%
		Accepted	598	611	594	582	652	70	12.0%
		% of Applied Accepted	98.2%	98.7%	81.6%	80.9%	78.5%		
		Enrolled	352	356	337	344	389	45	13.1%
		% of Accepted Enrolled	58.9%	58.3%	56.7%	59.1%	59.7%		
	Out-of-State	Applied	70	52	73	67	103	36	53.7%
		Accepted	70	52	55	42	73	31	73.8%
		% of Applied Accepted	100.0%	100.0%	75.3%	62.7%	70.9%		
		Enrolled	37	22	27	18	30	12	66.7%
		% of Accepted Enrolled	52.9%	42.3%	49.1%	42.9%	41.1%		
	Subtotal	Applied	679	671	801	786	934	148	18.8%
		Accepted	668	663	649	624	725	101	16.2%
		% of Applied Accepted	98.4%	98.8%	81.0%	79.4%	77.6%		
		Enrolled	389	378	364	362	419	57	15.7%
		% of Accepted Enrolled	58.2%	57.0%	56.1%	58.0%	57.8%		
UMF	In-State	Applied	207	214	209	176	194	18	10.2%
		Accepted	151	136	129	119	145	26	21.8%
		% of Applied Accepted	72.9%	63.6%	61.7%	67.6%	74.7%		
		Enrolled	98	89	90	74	87	13	17.6%
		% of Accepted Enrolled	64.9%	65.4%	69.8%	62.2%	60.0%		
	Out-of-State	Applied	63	53	42	57	57	0	0.0%
		Accepted	34	23	27	28	31	3	10.7%
		% of Applied Accepted	54.0%	43.4%	64.3%	49.1%	54.4%		
		Enrolled	19	15	16	11	11	0	0.0%
		% of Accepted Enrolled	55.9%	65.2%	59.3%	39.3%	35.5%		
	Subtotal	Applied	270	267	251	233	251	18	7.7%
		Accepted	185	159	156	147	176	29	19.7%
		% of Applied Accepted	68.5%	59.6%	62.2%	63.1%	70.1%		
		Enrolled	117	104	106	85	98	13	15.3%
		% of Accepted Enrolled	63.2%	65.4%	67.9%	57.8%	55.7%		

## Transfer Undergraduate Applicants, Acceptances, and Enrolled Students

Change from  
2007 to 2008

			Fall 2004	Fall 2005	Fall 2006	Fall 2007	Fall 2008	#	%
UMFK	In-State	Applied	114	104	102	133	106	-27	-20.3%
		Accepted	91	73	77	108	75	-33	-30.6%
		% of Applied Accepted	79.8%	70.2%	75.5%	81.2%	70.8%		
		Enrolled	50	41	38	59	37	-22	-37.3%
		% of Accepted Enrolled	54.9%	56.2%	49.4%	54.6%	49.3%		
	Out-of-State	Applied	398	332	240	265	153	-112	-42.3%
		Accepted	271	229	148	165	106	-59	-35.8%
		% of Applied Accepted	68.1%	69.0%	61.7%	62.3%	69.3%		
		Enrolled	134	135	94	116	51	-65	-56.0%
		% of Accepted Enrolled	49.4%	59.0%	63.5%	70.3%	48.1%		
	Subtotal	Applied	512	436	342	398	259	-139	-34.9%
		Accepted	362	302	225	273	181	-92	-33.7%
		% of Applied Accepted	70.7%	69.3%	65.8%	68.6%	69.9%		
		Enrolled	184	176	132	175	88	-87	-49.7%
		% of Accepted Enrolled	50.8%	58.3%	58.7%	64.1%	48.6%		
UMM	In-State	Applied	46	55	61	45	61	16	35.6%
		Accepted	41	41	50	38	51	13	34.2%
		% of Applied Accepted	89.1%	74.5%	82.0%	84.4%	83.6%		
		Enrolled	27	25	35	25	36	11	44.0%
		% of Accepted Enrolled	65.9%	61.0%	70.0%	65.8%	70.6%		
	Out-of-State	Applied	35	33	40	44	38	-6	-13.6%
		Accepted	17	16	24	28	20	-8	-28.6%
		% of Applied Accepted	48.6%	48.5%	60.0%	63.6%	52.6%		
		Enrolled	6	7	14	11	11	0	0.0%
		% of Accepted Enrolled	35.3%	43.8%	58.3%	39.3%	55.0%		
	Subtotal	Applied	81	88	101	89	99	10	11.2%
		Accepted	58	57	74	66	71	5	7.6%
		% of Applied Accepted	71.6%	64.8%	73.3%	74.2%	71.7%		
		Enrolled	33	32	49	36	47	11	30.6%
		% of Accepted Enrolled	56.9%	56.1%	66.2%	54.5%	66.2%		

## Transfer Undergraduate Applicants, Acceptances, and Enrolled Students

Change from  
2007 to 2008

			Fall 2004	Fall 2005	Fall 2006	Fall 2007	Fall 2008	#	%
UMPI	In-State	Applied	130	125	146	115	103	-12	-10.4%
		Accepted	102	100	122	76	74	-2	-2.6%
		% of Applied Accepted	78.5%	80.0%	83.6%	66.1%	71.8%		
		Enrolled	60	64	78	50	54	4	8.0%
		% of Accepted Enrolled	58.8%	64.0%	63.9%	65.8%	73.0%		
	Out-of-State	Applied	301	351	365	60	30	-30	-50.0%
		Accepted	253	254	282	34	25	-9	-26.5%
		% of Applied Accepted	84.1%	72.4%	77.3%	56.7%	83.3%		
		Enrolled	131	129	148	18	15	-3	-16.7%
		% of Accepted Enrolled	51.8%	50.8%	52.5%	52.9%	60.0%		
	Subtotal	Applied	431	476	511	175	133	-42	-24.0%
		Accepted	355	354	404	110	99	-11	-10.0%
		% of Applied Accepted	82.4%	74.4%	79.1%	62.9%	74.4%		
		Enrolled	191	193	226	68	69	1	1.5%
		% of Accepted Enrolled	53.8%	54.5%	55.9%	61.8%	69.7%		
USM	In-State	Applied	1,276	1,161	1,238	1,317	1,202	-115	-8.7%
		Accepted	976	907	998	977	944	-33	-3.4%
		% of Applied Accepted	76.5%	78.1%	80.6%	74.2%	78.5%		
		Enrolled	680	622	660	647	593	-54	-8.3%
		% of Accepted Enrolled	69.7%	68.6%	66.1%	66.2%	62.8%		
	Out-of-State	Applied	331	273	286	302	262	-40	-13.2%
		Accepted	172	174	198	189	173	-16	-8.5%
		% of Applied Accepted	52.0%	63.7%	69.2%	62.6%	66.0%		
		Enrolled	69	65	74	79	62	-17	-21.5%
		% of Accepted Enrolled	40.1%	37.4%	37.4%	41.8%	35.8%		
	Subtotal	Applied	1,607	1,434	1,524	1,619	1,464	-155	-9.6%
		Accepted	1,148	1,081	1,196	1,166	1,117	-49	-4.2%
		% of Applied Accepted	71.4%	75.4%	78.5%	72.0%	76.3%		
		Enrolled	749	687	734	726	655	-71	-9.8%
		% of Accepted Enrolled	65.2%	63.6%	61.4%	62.3%	58.6%		