

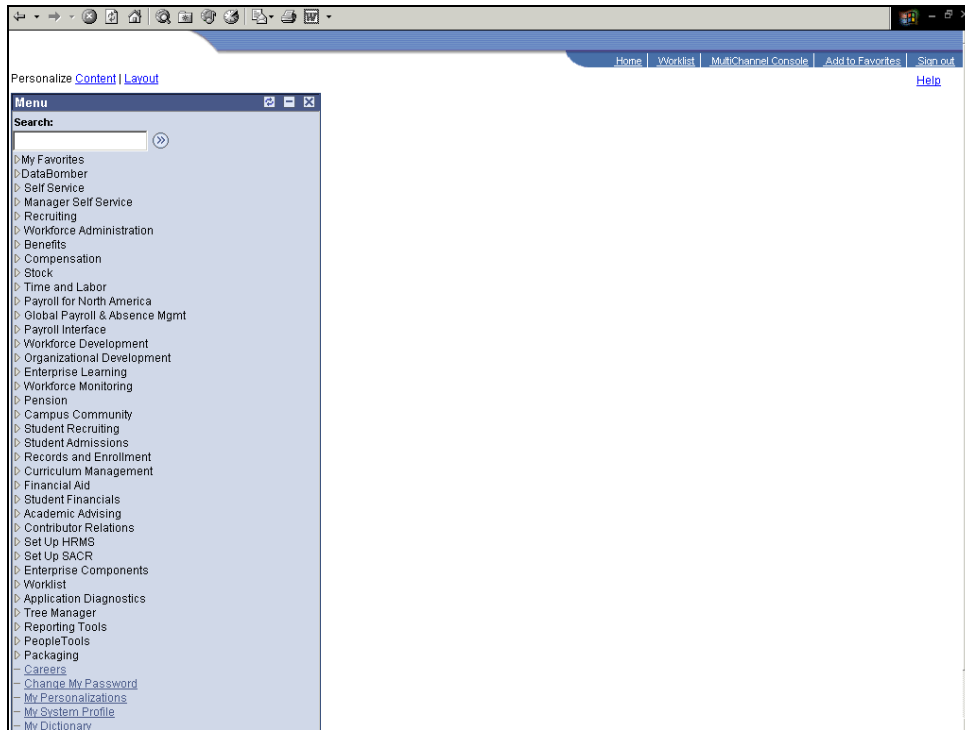
File Name	Auto-Collapsing the Menu Pagelet.doc
Version	8.9
Date Modified	1/18/2008
Last Changed by	ASDS

Auto-Collapsing the Menu Pagelet

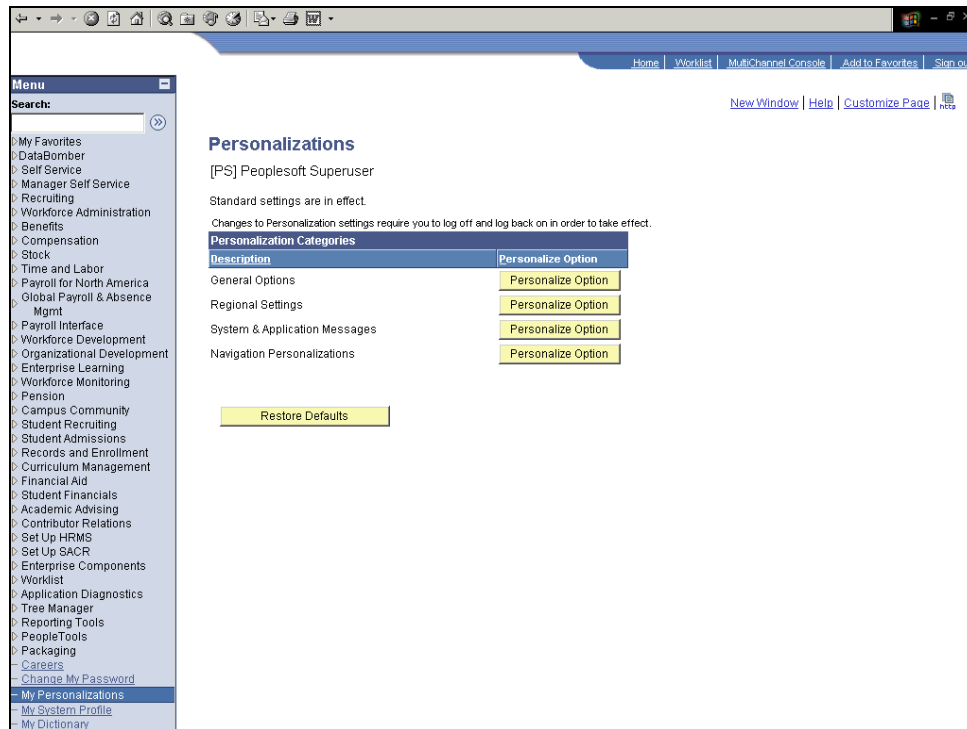
Concept

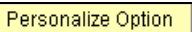
You can set your preferences so that the menu pagelet collapses automatically when a navigation page is displayed. This maximizes the viewable area of the application pages. This is particular useful if you are viewing your PeopleSoft application in an 800x600 display resolution.

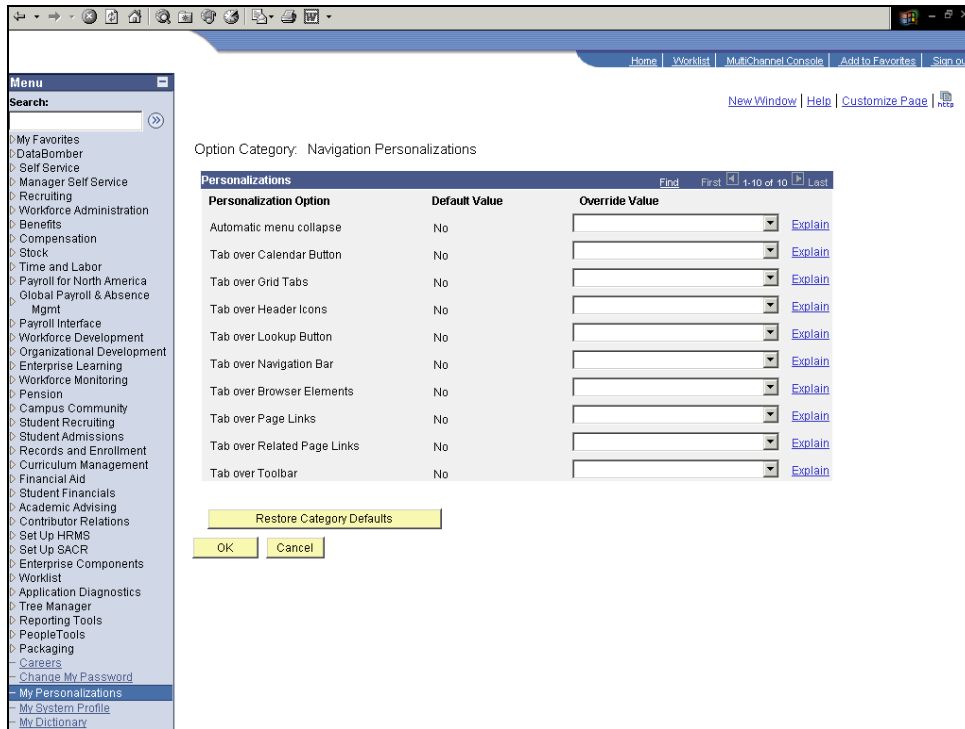
Procedure



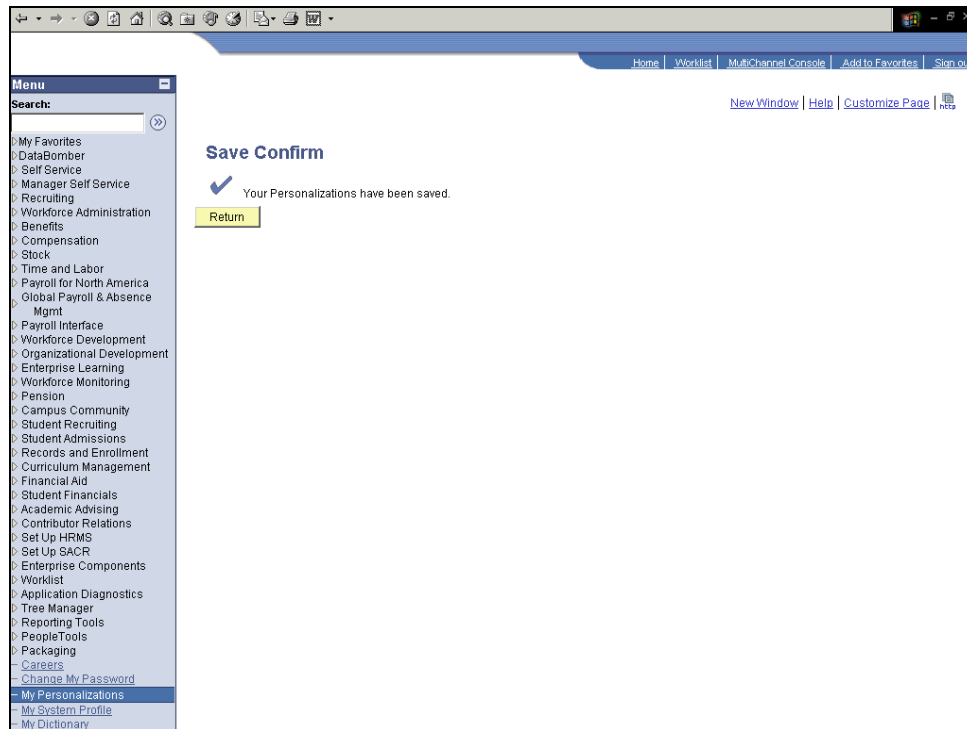
Step	Action
1.	Click the My Personalizations link. My Personalizations

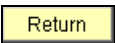


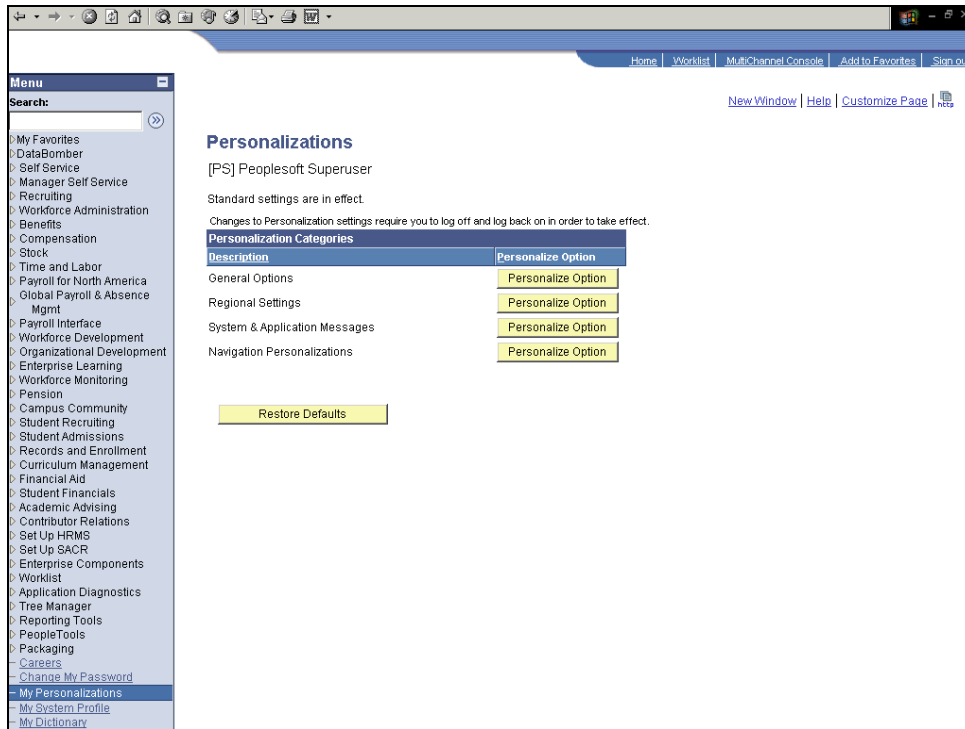
Step	Action
2.	Click the Personalize Option button. 



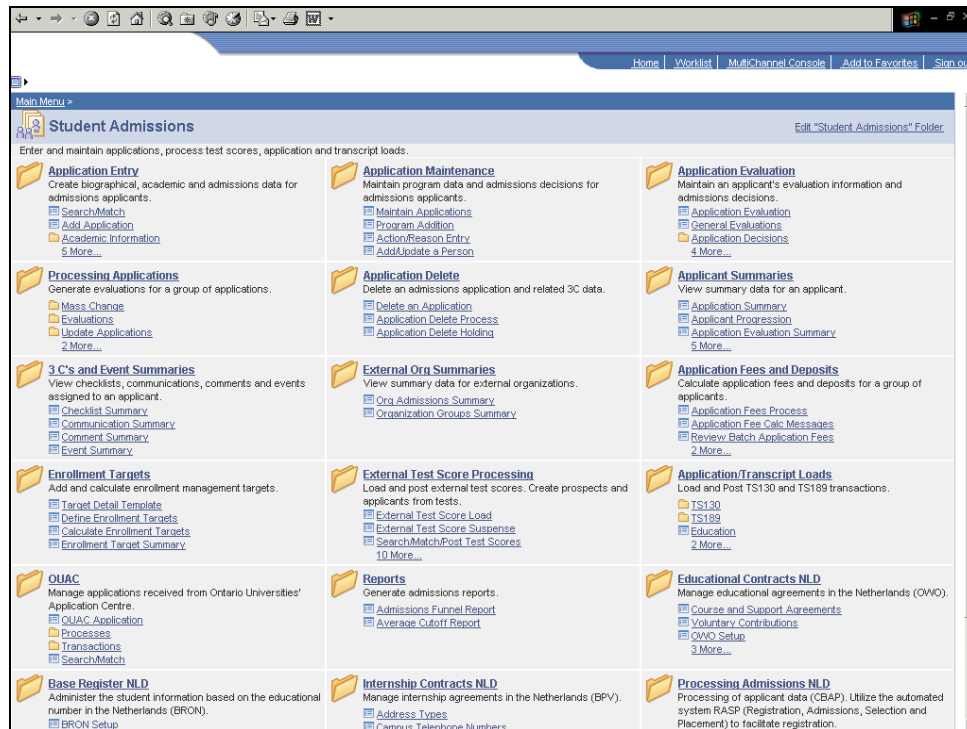
Step	Action
3.	The first option in this list controls the menu collapse function. The default setting is to leave it open at all times. You are going to override this setting. Click the Override Value list. <input type="text" value="No"/>
4.	Click an entry in the list. <input type="text" value="Yes"/>
5.	Click the OK button. <input type="button" value="OK"/>



Step	Action
6.	Click the Return button. <div style="text-align: center;">  </div>
7.	Notice the note at the top of the page, which states that changes to these settings require that you log off and log back on in order for them to take effect. For the purposes of this exercise, this process will be done for you.



Step	Action
8.	You have logged off and logged back on and can now see the effect of changing your personal navigation so that the menu pagelet collapses automatically. Click the Student Admissions link. <input data-bbox="370 1192 573 1220" type="text" value="Student Admissions"/>



Step	Action
9.	Notice that the menu pagelet collapsed automatically. You can continue navigating in the application by using the displayed navigation page.
10.	In summary, you can set your preferences so that the menu pagelet collapses automatically when a navigation page is displayed. End of Procedure.